



Service Bulletin

PRELIMINARY INFORMATION

Subject: Information on Accessory Bed Liner Installation for Vehicles Equipped With Upper Tie-Downs

Models: 2014 Chevrolet Silverado Light Duty
2014 GMC Sierra Light Duty

Attention: This PI only applies to vehicles with bed liner part numbers 23123699, 22879299, 23123698 and 22879300.

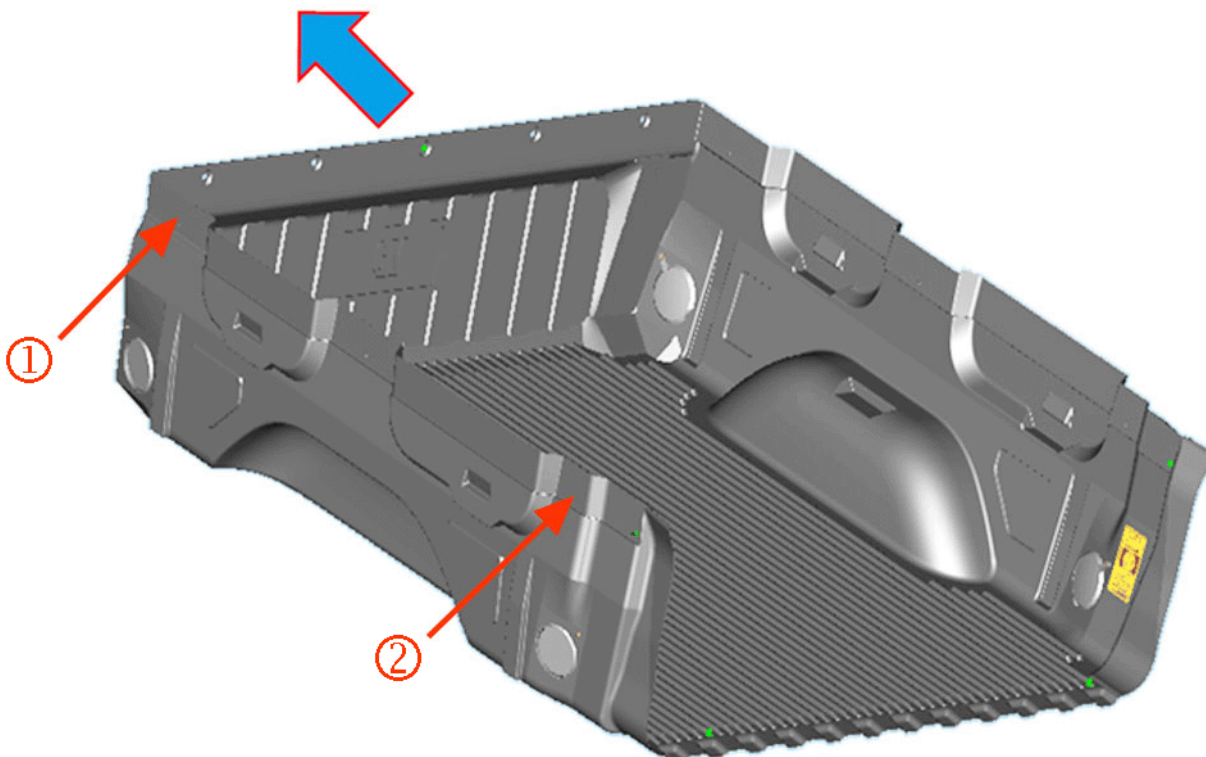
Condition/Concern

During installation of the bed liner, technicians/installer may find that some vehicles may have upper tie-downs installed in the (front and rear) side locations of the pickup bed. However there are no access holes in the liner that match these tie-down locations.

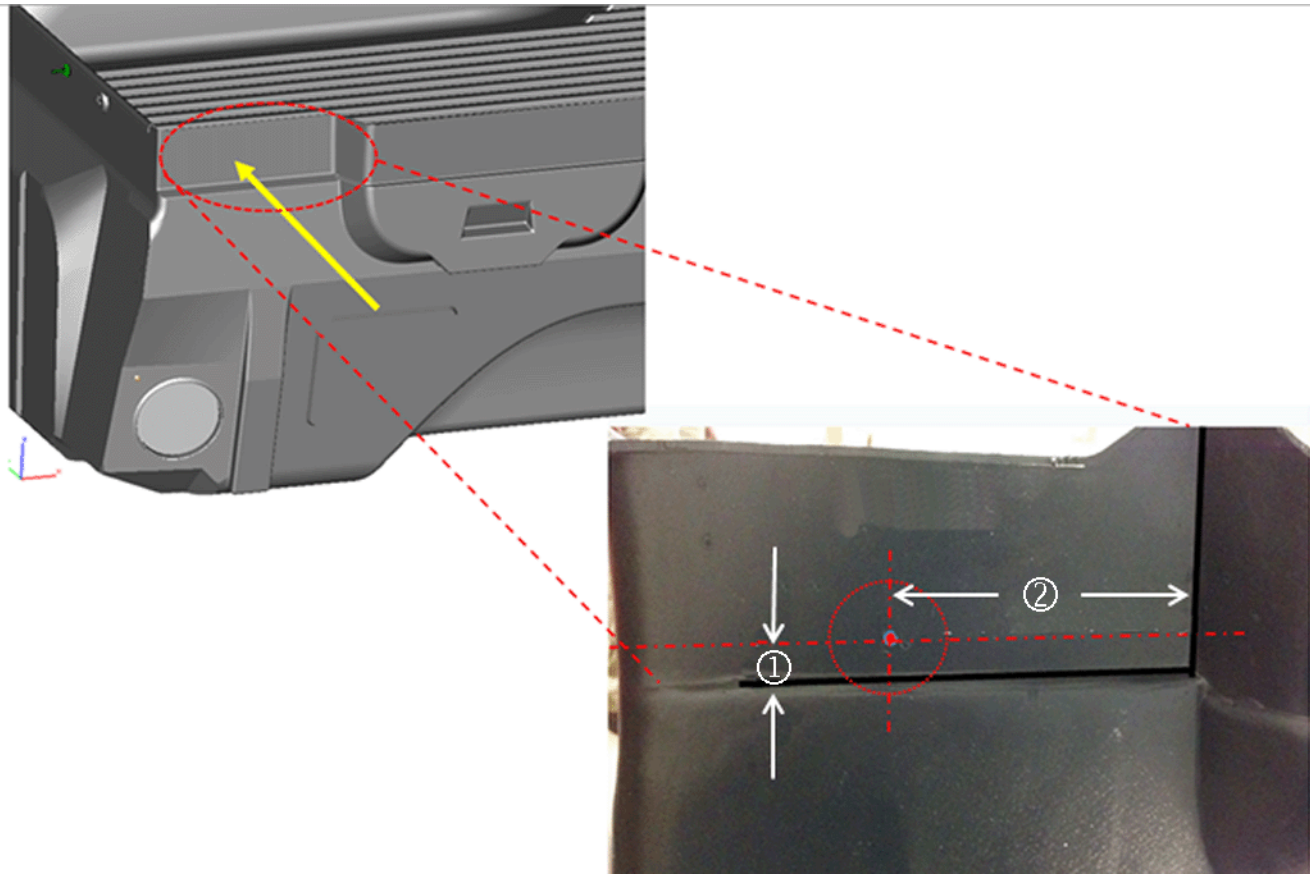
Recommendation/Instructions

Locate and drill four 5 cm (2.0 in) holes in the accessory bed liner to accommodate the upper tie-down locations. The following graphics contain dimensions for locating the center of these hole positions. Holes should be marked and drilled from the outside of the bed liner.

Left Side: Front (1) and Rear (2) Locations



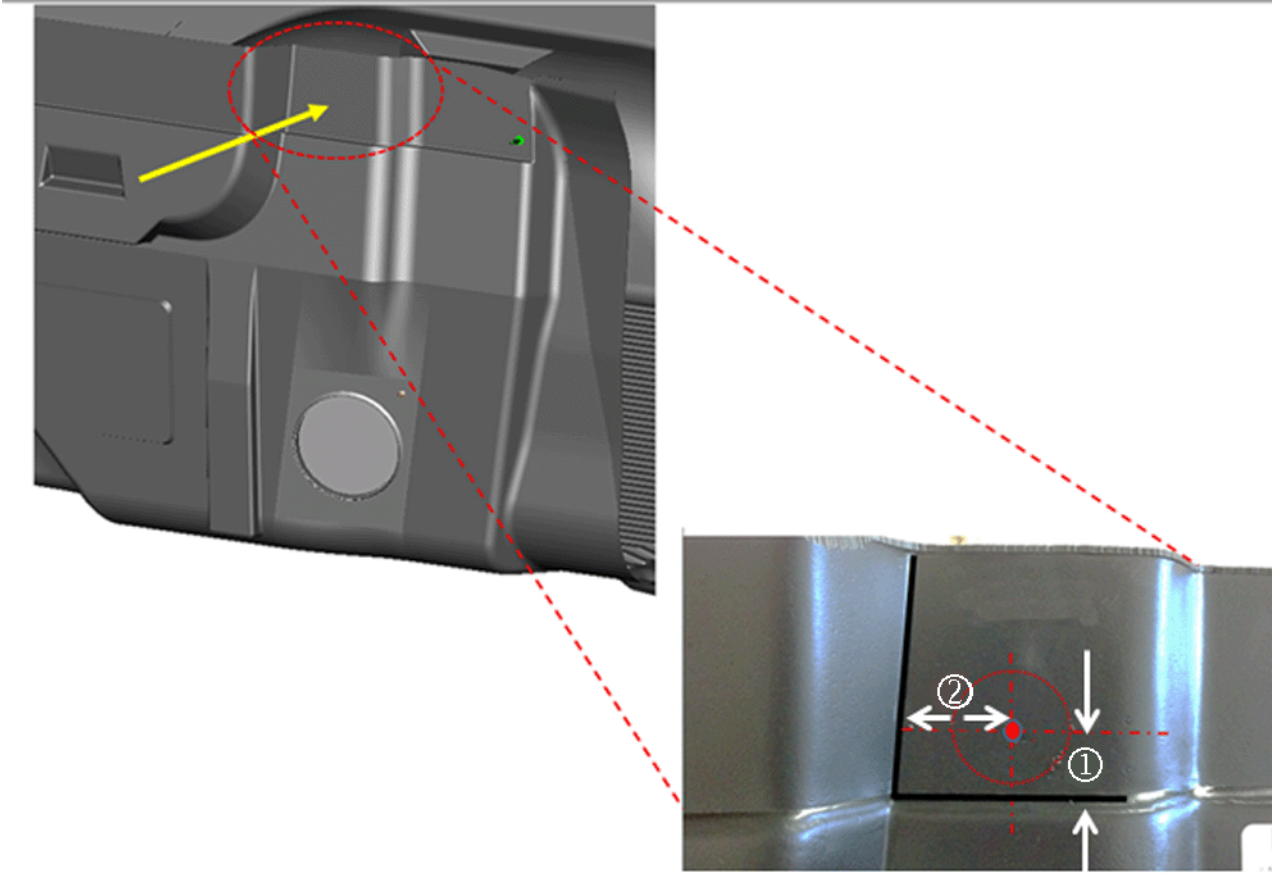
Left Front Location Dimensions



(1) = 11 mm (0.43 in)

(2) = 120 mm (4.75 in)

Left Rear Location Dimensions

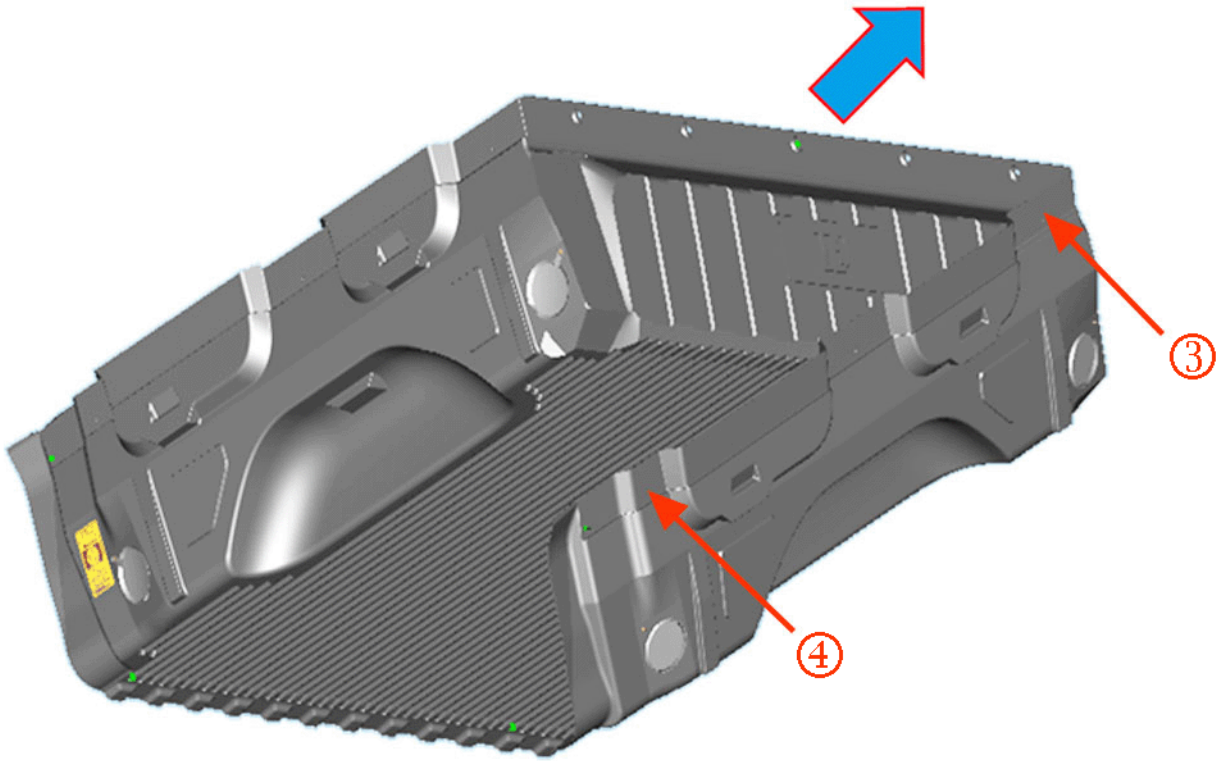


Important: To better control the accuracy of the rear locations, it is critical to mark the location of the horizontal line first. Measure the distance upward (1) in several areas, and using a marker or tape, position a line at that level. Then, along that line, mark the intersecting point for the second measurement (2).

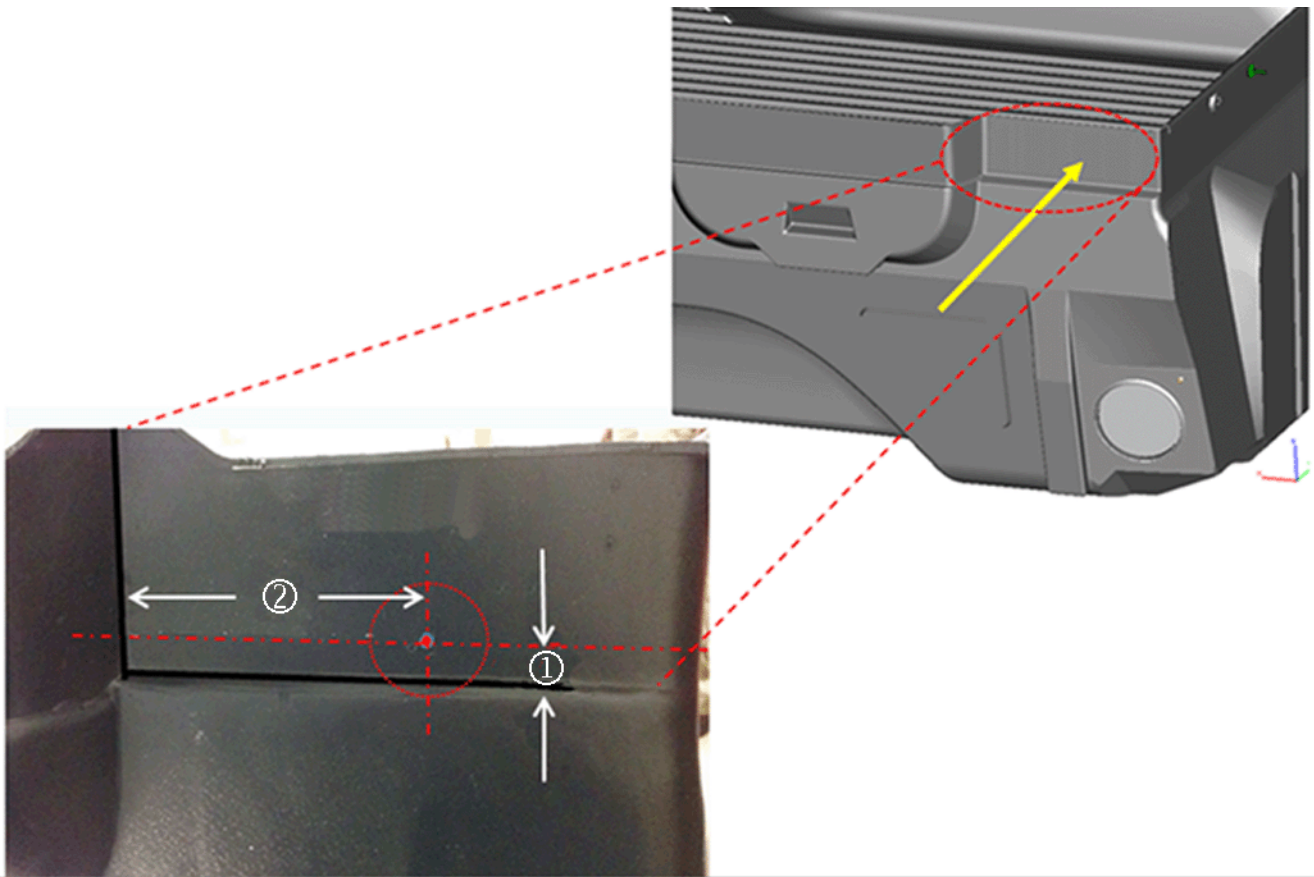
(1) = 21 mm (0.825 in)

(2) = 38 mm (1.5 in)

Right Side: Front (3) and Rear (4) Locations



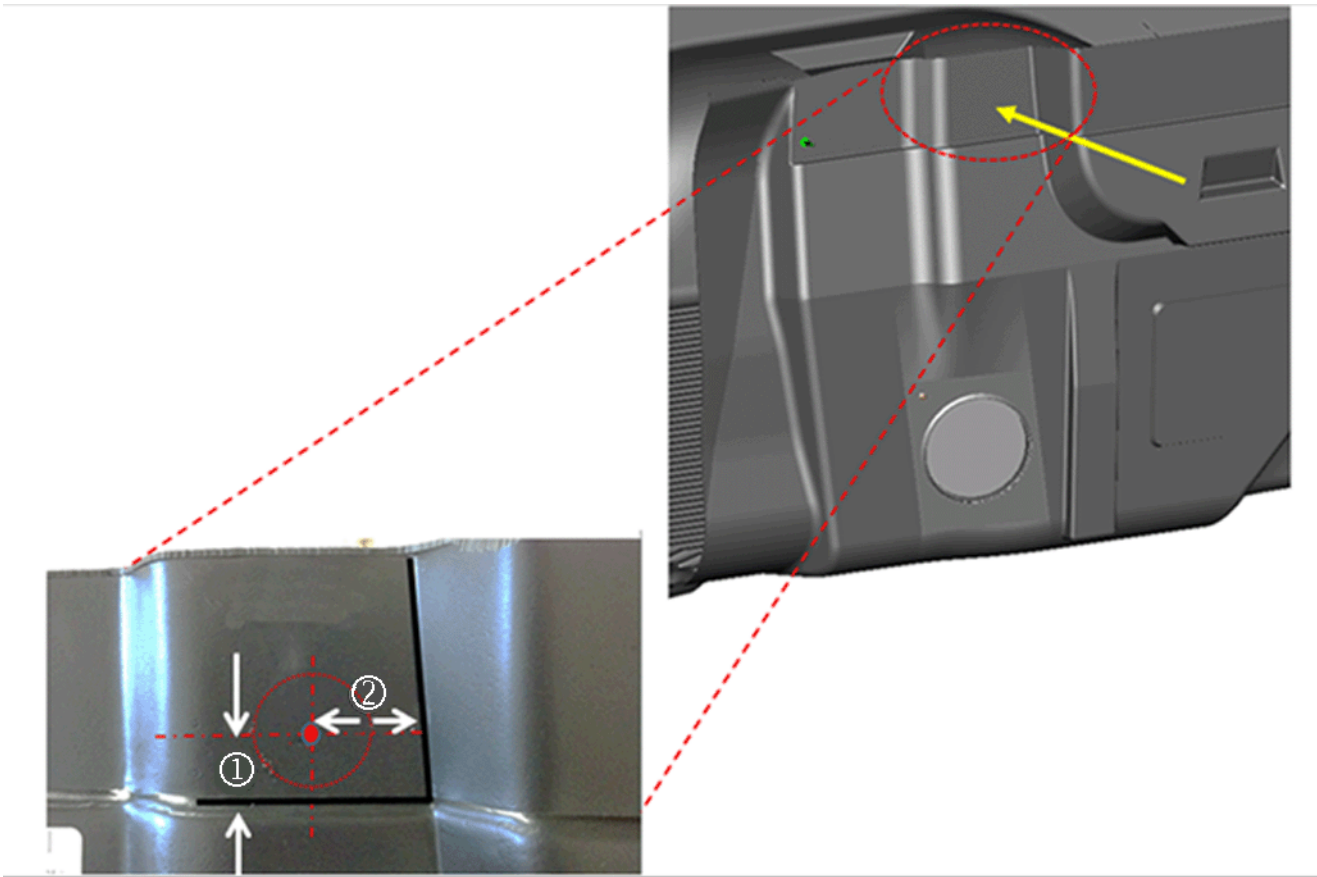
Right Front Location Dimensions



(1) = 11 mm (0.43 in)

(2) = 120 mm (4.75 in)

Right Rear Location Dimensions



Important: To better control the accuracy of the rear locations, it is critical to mark the location of the horizontal line first. Measure the distance upward (1) in several areas, and using a marker or tape, position a line at that level. Then, along that line, mark the intersecting point for the second measurement (2).

(1) = 21 mm (0.825 in)

(2) = 38 mm (1.5 in)

Warranty Information

For vehicles repaired under warranty, use:

Labor Operation	Description	Labor Time
0580008*	Add Upper Tie Down Access Holes to Bed Liner	0.5 hr

*This is a unique labor operation for bulletin use only. It will not be published in the Labor Time Guide.

GM bulletins are intended for use by professional technicians, NOT a "do-it-yourselfer". They are written to inform these technicians of conditions that may occur on some vehicles, or to provide information that could assist in the proper service of a vehicle. Properly trained technicians have the equipment, tools, safety instructions, and know-how to do a job properly and safely. If a condition is described, DO NOT assume that the bulletin applies to your vehicle, or that your vehicle will have that condition. See your GM dealer for information on whether your vehicle may benefit from the information.



WE SUPPORT VOLUNTARY TECHNICIAN CERTIFICATION