

# MIL "ON" DTC P2440/P2442

**Service Category** Engine/Hybrid System

**Section** Engine Control

**Market** USA

Toyota Supports ASE Certification 

## Applicability

YEAR(S)	MODEL(S)	ADDITIONAL INFORMATION
2012 – 2013	Sequoia, Tundra	Engine(s): 3UR VDS(s): BW5F1, BW5G1, BY5F1, BY5G1, BY64A, BY67A, BY68A, CW5F1, CY5F1, DW5F1, DW5G1, DY5F1, DY5G1, EY5F1, FY5F1, HW5F1, HY5F1, JW5G1, JY5G1, KW5F1, KY5F1, KY5G1, LY5F1, MW5F1, MY5F1, RY5F1, SY5F1, TY5F1, UW5F1, UY5F1, YY5G1, ZY5G1, ZY64A, ZY67A, ZY68A

### REVISION NOTICE

**March 6, 2013 Rev2:**

- Production Change Information has been added.
- Warranty Information, Parts Information, and Calibration Information have all been updated.

**September 26, 2012 Rev1:**

- The Title, Introduction, Warranty Information, Parts Information, and Calibration Information have all been updated.

**Any previous printed versions of this bulletin should be discarded.**

## Introduction

Some 2012 – 2013 model year Sequoia and Tundra vehicles with the 3UR-FE/FBE (5.7 L) engine may exhibit a MIL "ON" condition with Diagnostic Trouble Code (DTC) P2440/P2442 (*Secondary Air Injection System Switching Valve Stuck Open Bank 1/Bank 2*) under freezing ambient conditions. The Engine Control Module/ECM (SAE term: Powertrain Control Module/PCM) logic has been revised to address this condition. Use the following repair procedure to reprogram the ECM (PCM).

## MIL "ON" DTC P2440/P2442

---

### Production Change Information

This bulletin applies to vehicles produced **BEFORE** the Production Change Effective VINs shown below.

MODEL	ENGINE	DRIVETRAIN	PRODUCTION CHANGE EFFECTIVE VIN
Sequoia	3UR-FE	2WD	5TDZY5G1#DS047139
			5TDKY5G1#DS047139
			5TDYY5G1#DS047139
			5TDZY64A#DS047139
			5TDZY68A#DS047139
			5TDZY67A#DS047139
		4WD	5TDBY64A#DS083611
			5TDBY68A#DS083611
			5TDBY67A#DS083611
			5TDBY5G1#DS083611
	5TDJY5G1#DS083611		
	3UR-FBE	4WD	5TDDY5G1#DS083611
			5TDBW5G1#DS083611
			5TDJW5G1#DS083611
			5TDDW5G1#DS083611

MIL "ON" DTC P2440/P2442

Production Change Information (Continued)

MODEL	ENGINE	DRIVETRAIN	WHEEL BASE	PRODUCTION CHANGE EFFECTIVE VIN
Tundra	3UR-FE	2WD	3700 mm (145.7 in.)	5TFSY5F1#DX140128
				5TFRY5F1#DX140128
				5TFFY5F1#DX140128
				5TFEY5F1#DX140128
				5TFLY5F1#DX140128
		4180 mm (164.6 in.)	5TFTY5F1#DX007978	
	4WD	3220 mm (126.8 in.)	5TFKY5F1#DX005976	
	3UR-FBE	4WD	3700 mm (145.7 in.)	5TFBW5F1#DX295978
				5TFUW5F1#DX295978
				5TFMW5F1#DX295978
				5TFHW5F1#DX295978
				5TFDW5F1#DX295978
	3UR-FE	4WD	3700 mm (145.7 in.)	5TFUY5F1#DX295958
				5TFHY5F1#DX295958
				5TFBY5F1#DX295958
				5TFDY5F1#DX295958
				5TFMY5F1#DX295958
	3UR-FBE	4WD	4180 mm (164.6 in.)	5TFCW5F1#DX015093
3UR-FE	5TFCY5F1#DX015093			

**MIL "ON" DTC P2440/P2442**

**Warranty Information**

OP CODE	DESCRIPTION	TIME	MODEL	ENGINE	TOWING OPTION	OFF	T1	T2
EG1303	Reprogram ECM (PCM) Engine	0.4	Sequoia	3UR-FE	Tow	89661-0CM80 89661-0CM81 89661-0CM82	8A	99
					Std	89661-0CM90 89661-0CM91 89661-0CM92		
				3UR-FBE	Tow	89661-0CN30 89661-0CN31 89661-0CN32		
					Std	89661-0CN20 89661-0CN21 89661-0CN22		
			Tundra	3UR-FE	Tow	89661-0CM30 89661-0CM31 89661-0CM32		
					Std	89661-0CM20 89661-0CM21 89661-0CM22		
				3UR-FBE	Tow	89661-0CM70 89661-0CM71 89661-0CM72		
					Std	89661-0CM60 89661-0CM61 89661-0CM62		

**APPLICABLE WARRANTY**

- This repair is covered under the Toyota Federal Emission Warranty. This warranty is in effect for 96 months or 80,000 miles, whichever occurs first, from the vehicle's in-service date.
- Warranty application is limited to occurrence of the specified condition described in this bulletin.

## MIL "ON" DTC P2440/P2442

### Parts Information

MODEL	ENGINE	TOWING OPTION	PREVIOUS PART NUMBER	CURRENT PART NUMBER	PART NAME	QTY
Sequoia	3UR-FE	Tow	89661-0CM80 89661-0CM81 89661-0CM82	89661-0CM83	Computer, Engine Control (ECM/PCM)	-
		Std	89661-0CM90 89661-0CM91 89661-0CM92	89661-0CM93		-
	3UR-FBE	Tow	89661-0CN30 89661-0CN31 89661-0CN32	89661-0CN33		-
		Std	89661-0CN20 89661-0CN21 89661-0CN22	89661-0CN23		-
Tundra	3UR-FE	Tow	89661-0CM30 89661-0CM31 89661-0CM32	89661-0CM33		-
		Std	89661-0CM20 89661-0CM21 89661-0CM22	89661-0CM23		-
	3UR-FBE	Tow	89661-0CM70 89661-0CM71 89661-0CM72	89661-0CM73		-
		Std	89661-0CM60 89661-0CM61 89661-0CM62	89661-0CM63		-

PREVIOUS PART NUMBER	CURRENT PART NUMBER	PART NAME	QTY
00451-00001-LBL	Same	Authorized Modification Labels	1

**NOTE**

- The ECM (PCM) should NOT be replaced as part of the repair procedure.
- Authorized Modification Labels may be ordered in packages of 25 from the Materials Distribution Center (MDC) through Dealer Daily – Dealer Support Materials Orders.

**MIL "ON" DTC P2440/P2442**

**Calibration Information**

MODEL	ENGINE	DRIVETRAIN	TOWING OPTION	PREVIOUS CALIBRATION ID	NEW CALIBRATION ID
Sequoia	3UR-FE	2WD	Tow	30CK1000 30CK1100 30CK1200	<a href="#">30CK1300</a>
		4WD		30CK1001 30CK1101 30CK1201	<a href="#">30CK1301</a>
		2WD	Std	30CK2000 30CK2100 30CK2200	<a href="#">30CK2300</a>
		4WD		30CK2001 30CK2101 30CK2201	<a href="#">30CK2301</a>
	3UR-FBE	4WD	Std	30CK5000 30CK5100 30CK5200	<a href="#">30CK5300</a>
		4WD	Tow	30CK6000 30CK6100 30CK6200	<a href="#">30CK6300</a>
Tundra	3UR-FE	2WD	Std	30CJ5000 30CJ5100 30CJ5200	<a href="#">30CJ5300</a>
		4WD		30CJ5001 30CJ5101 30CJ5201	<a href="#">30CJ5301</a>
		2WD	Tow	30CJ6000 30CJ6100 30CJ6200	<a href="#">30CJ6300</a>
		4WD		30CJ6001 30CJ6101 30CJ6201	<a href="#">30CJ6301</a>
	3UR-FBE	4WD	Std	30CJ9000 30CJ9100 30CJ9200	<a href="#">30CJ9300</a>
		4WD	Tow	30CK0000 30CK0100 30CK0200	<a href="#">30CK0300</a>

**MIL "ON" DTC P2440/P2442**

**Required Tools & Equipment**

REQUIRED EQUIPMENT	SUPPLIER	PART NUMBER	QTY
Techstream 2.0*	ADE	TS2UNIT	1
TIS Techstream		TSPKG1	
Techstream Lite		TSLITEDLR01	

**NOTE**

- Only ONE of the Techstream units listed above is required.
- Software version 8.00.034 or later is required.
- Additional Techstream units may be ordered by calling Approved Dealer Equipment (ADE) at 1-800-368-6787.
- The Diagnostic Tester is NOT recommended for flash reprogramming. Please use Techstream or an approved J2534 interface to perform flash reprogramming updates. Visit [techinfo.toyota.com](http://techinfo.toyota.com) for more information regarding J2534 reprogramming.



SPECIAL SERVICE TOOLS (SST)	PART NUMBER	QTY
GR8 Battery Diagnostic Station*	<a href="#">00002-MCGR8</a>	1

**NOTE**

Additional SSTs may be ordered by calling 1-800-933-8335.

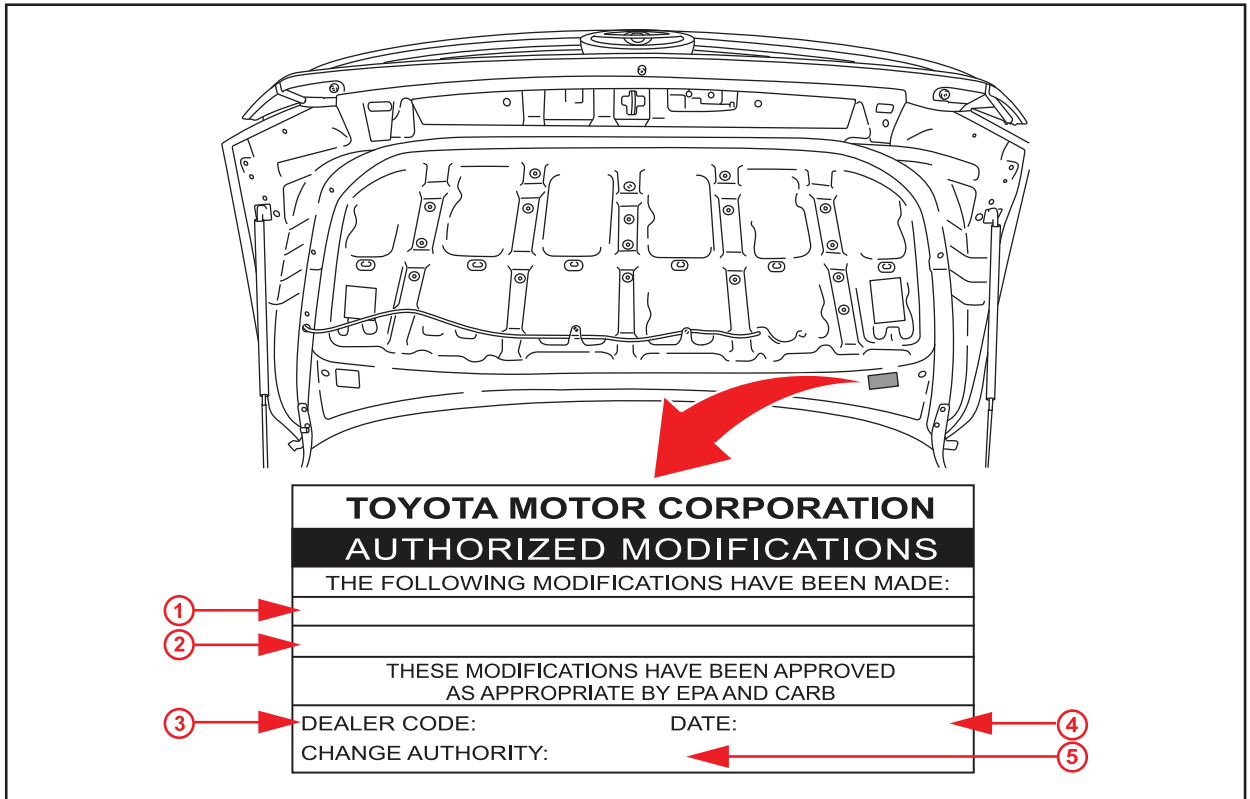
\* Essential SST.

# MIL "ON" DTC P2440/P2442

## Repair Procedure

1. Confirm the condition matches the Introduction.
2. Check for the Authorized Modifications Label affixed to the vehicle in the location shown in Figure 1. Confirm if the ECM (PCM) calibration has been updated. If the calibration ID listed is NOT the latest ECM (PCM) calibration — go to step 3.

**Figure 1. Location of Authorized Modifications Label on 2012 – 2013 Sequoia and Tundra**



<b>1</b>	Replacement ECM (PCM) Part Number (i.e., 89661-0CM83)
<b>2</b>	New Calibration ID(s) (i.e., 30CK1300)
<b>3</b>	Dealer Code

<b>4</b>	Date Completed
<b>5</b>	This SB Number



## MIL "ON" DTC P2440/P2442

---

### Repair Procedure (Continued)

- Flash reprogram the ECM (PCM).

**NOTE**

- The GR8 Battery Diagnostic Station **MUST** be used in Power Supply Mode to maintain battery voltage at 13.5 volts while flash reprogramming the vehicle.
- For details on how to use the GR8 Battery Diagnostic Station, refer to the [GR8 Instruction Manual](#) located on the Technical Information System (TIS), *Diagnostics – Tools & Equipment – Battery Diagnostics*.

Follow the procedures outlined in Service Bulletin No. [T-SB-0012-13](#), "Techstream ECU Flash Reprogramming Procedure", and flash the ECM (PCM) with the NEW calibration file update.

- Install the Authorized Modifications Label.
  - Using a permanent marker, enter the following information on the label:
    - ECM part number [Refer to the **Parts Information** section for the **CURRENT PART NUMBER**]
    - Calibration ID(s) [Refer to the **Calibration Identification Chart** for the **NEW CALIBRATION ID**]
    - Dealer Code
    - Repair Date
    - Change Authority [**This SB number**]
  - Affix the Authorized Modifications Label to the vehicle at the location shown in Figure 1. The Authorized Modifications Label is available through the MDC, P/N 00451-00001-LBL.
- Test drive the vehicle to confirm proper vehicle operation.