

Creak Noise from Sunroof While Driving

Service Category Vehicle Exterior

Section Sliding Roof/Convertible

Market USA

Lexus Supports
ASE Certification 

Applicability

YEAR(S)	MODEL(S)	ADDITIONAL INFORMATION
2014	IS250, IS350	Body Type(s): 4Dr. Sedan

Introduction

Some 2014 model year IS 250/350 vehicles may exhibit a creak type noise coming from the roof area while turning into or out of an inclined driveway. This noise may be caused by an intermittent stick/slip condition between the sunroof housing and fasteners. Follow the procedure in this bulletin to address this condition.

Production Change Information

This bulletin applies to vehicles produced **BEFORE** the Production Change Effective VINs shown below.

MODEL	PLANT	DRIVETRAIN	PRODUCTION CHANGE EFFECTIVE VIN
IS 250	Tahara	2WD	JTHBF1D2#E5009499
		AWD	JTHCF1D2#E5003489
IS 350		2WD	JTHBE1D2#E5004099
		AWD	JTHCE1D2#E5001124

Warranty Information

OP CODE	DESCRIPTION	TIME	OPF	T1	T2
BD1309	R & R Sliding Roof Housing Hardware	3.0	90179-06216	91	14

APPLICABLE WARRANTY

- This repair is covered under the Lexus Basic Warranty. This warranty is in effect for 48 months or 50,000 miles, whichever occurs first, from the vehicle's in-service date.
- Warranty application is limited to occurrence of the specified condition described in this bulletin.

Creak Noise from Sunroof While Driving

Parts Information

PART NUMBER		PART NAME	QTY
PREVIOUS	NEW		
90179-06216	90179-06274	CZ Fastener Coating Nut (Black Nut)	4
90177-06002		Lock Nut (Silver)	4
62217-52120		Clip, Front Pillar Garnish	2
74611-33010-A2		Assist Grip Sub-assembly (Cover)*	4
74611-33010-B1			4
74611-33010-C0			4
74612-33020-A2			4
74612-33020-B1			4
74612-33020-C0			4

* Replace ONLY if damaged during removal.

Required Tools & Equipment

REQUIRED MATERIAL	PART NUMBER	QUANTITY
3M™ Semi-Rigid Plastic Repair, 50 mL Cartridge (or equivalent)**	34240	1
3M™ Polyolefin Adhesion Promoter, Aerosol Can (or equivalent)**	05907	1

** If required.

Repair Procedure

NOTE

Confirm that the vehicle has a creak-type noise coming from the sunroof frame assembly. The condition may occur when driving up/down a sharp incline such as a driveway at 10-15 mph.

Removal

HINT

For additional details on the following Removal steps, please refer to the appropriate Repair Manual section(s).

Refer to the Technical Information System (TIS), applicable model and model year Repair Manual:

- 2014 IS 250/350:
Vehicle Interior – Seat – “Seat: Rear Seat Assembly (for Fold Down Seat Type): [Removal](#)”

Creak Noise from Sunroof While Driving

Repair Procedure

Removal (Continued)

1. Remove rear seat cushion assembly and rear side seatback assemblies.
 - A. Disconnect the negative (-) battery terminal.

CAUTION

Wait at least 90 seconds after disconnecting the cable from the negative (-) battery terminal to disable the SRS system.

- B. Remove the rear cushion assembly.
 - C. Remove the rear side seatback assembly

HINT

It is NOT necessary to remove the rear seatback assembly to lower the headliner.

2. Temporarily reconnect the battery.
3. Fully recline both front seats.
4. Remove the front seat headrests (See Figures 1 – 2 below).

Figure 1.



Figure 2.



5. Disconnect the negative (-) battery terminal.
6. Lower headliner onto the reclined front seats.

NOTE

It is NOT necessary to remove the front seats from the vehicle. The roof headliner can be lowered onto the reclined front seats once the interior trim attached to it has been removed.

Creak Noise from Sunroof While Driving

Repair Procedure

Removal (Continued)

NOTICE

Do NOT damage the roof headliner assembly or body interior.

HINT

For additional details on the following Removal steps, please refer to the appropriate Repair Manual section(s).

Refer to TIS, applicable model and model year Repair Manual:

- 2014 IS 250/350:
Vehicle Interior – Interior Panels/Trim – “Interior Panels/Trim: Roof Headlining: [Removal](#)”

- A. Remove front door scuff plate (LH/RH).
- B. Remove front door opening trim cover (LH/RH).
- C. Remove front pillar garnish (LH/RH).
- D. Remove rear door scuff plate (LH/RH).
- E. Remove center pillar garnish assembly (LH/RH).
- F. Remove lower center pillar garnish (LH/RH).
- G. Remove center pillar garnish assembly (LH/RH).
- H. Remove rear seat side garnish (LH/RH).
- I. Remove inner roof side garnish assembly (LH/RH).
- J. Remove inner rear view mirror stay holder cover.
- K. Remove rain sensor cover (w/ rain sensor).
- L. Remove lane departure warning camera cover (w/ lane departure alert system).
- M. Remove map light assembly.
- N. Remove spot light assembly.
- O. Remove front assist grip sub-assembly (LH/RH).
- P. Remove rear assist grip assembly (LH/RH).
- Q. Remove visor bracket cover (LH/RH).
- R. Remove visor assembly (LH/RH).
- S. Lower headliner onto reclined front seats.

Creak Noise from Sunroof While Driving

Repair Procedure

Removal (Continued)

See Figures 3 – 5 below.

NOTICE

Do NOT damage the roof headliner assembly or body interior.

Figure 3.



Figure 4.

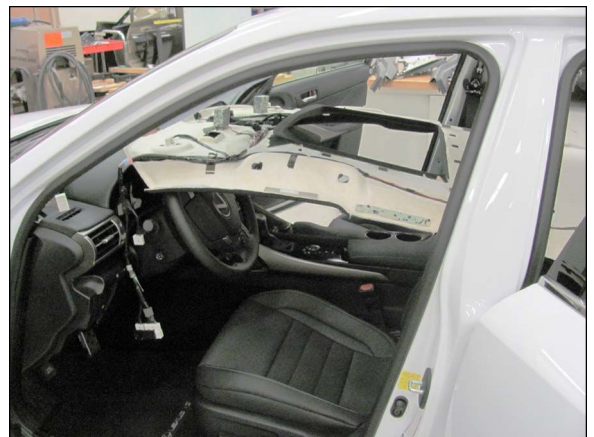


Figure 5.



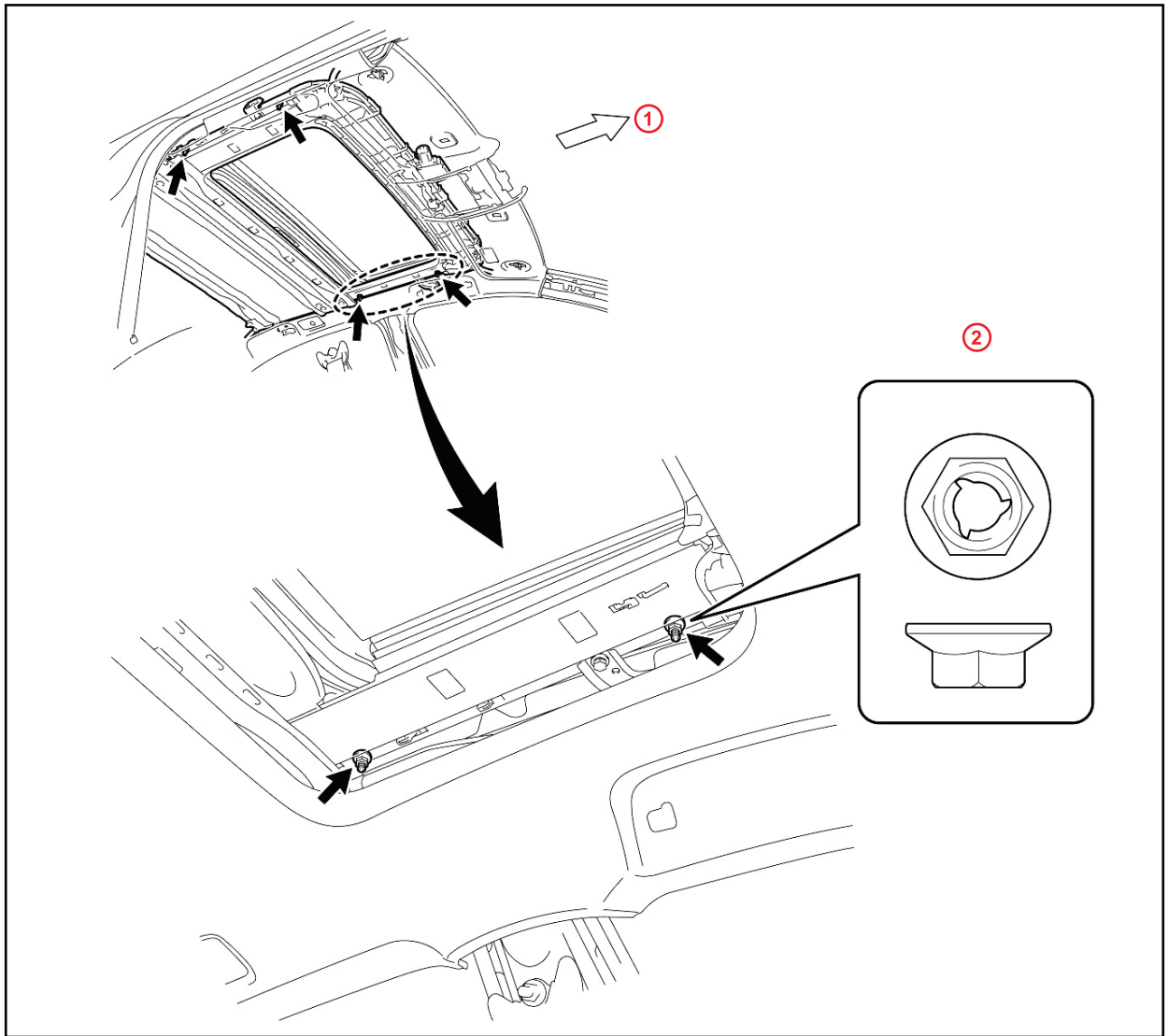
7. Remove and discard the 4 sliding roof mounting nuts.

Creak Noise from Sunroof While Driving

Repair Procedure

Removal (Continued)

Figure 6.



1	Front
2	Sliding Roof Mounting Nut

Installation

1. Install the NEW sliding roof mounting nuts.
 - A. Tighten the 4 CZ Fastener Coating Nuts (Black Nut, P/N 90179-06274).

Creak Noise from Sunroof While Driving

Repair Procedure

Installation (Continued)

Torque: 7 N*m (71 kgf*cm, 62 in*lbf)

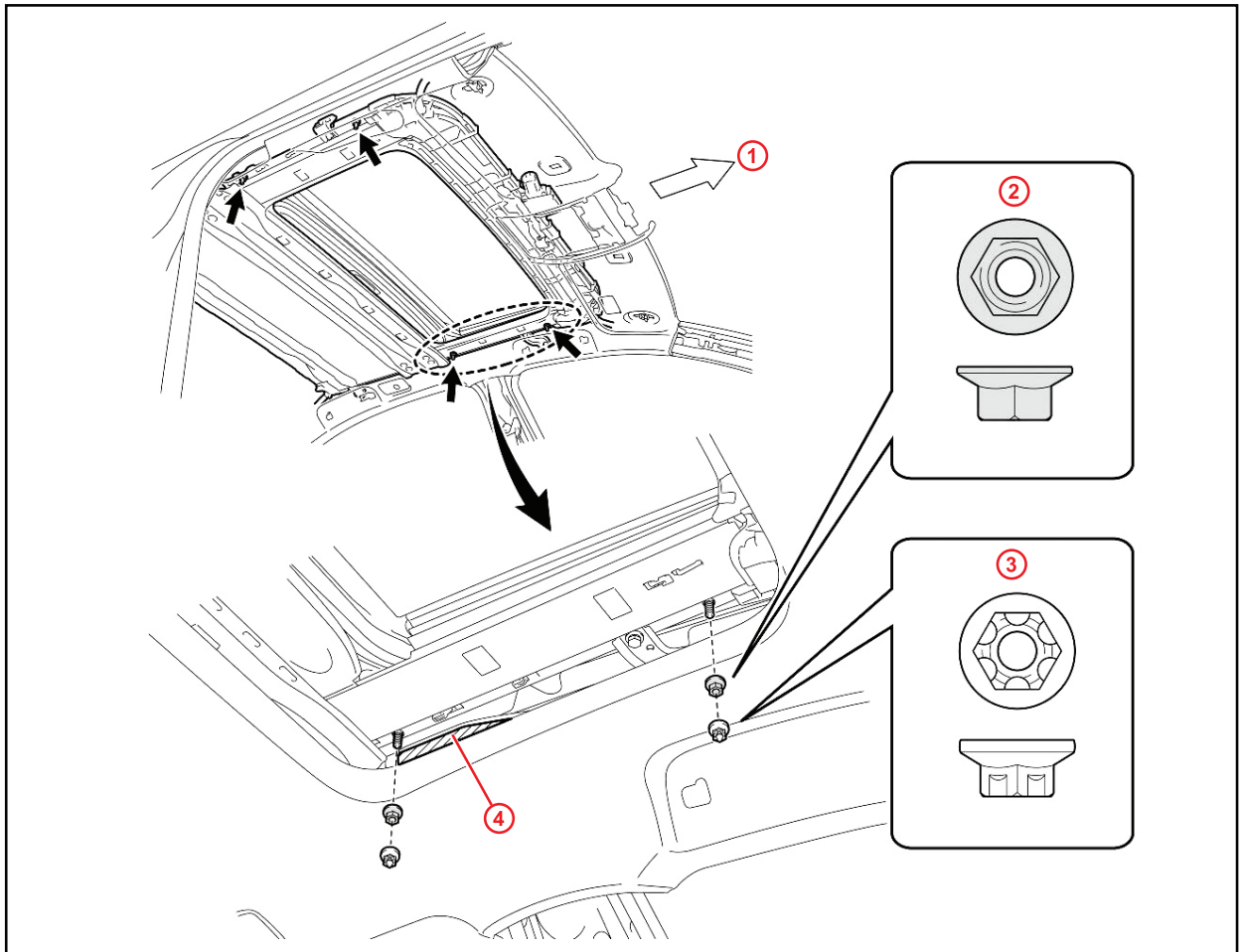
B. Tighten the 4 lock nuts (Silver, P/N 90177-06002).

Torque: 7 N*m (71 kgf*cm, 62 in*lbf)

NOTICE

Carefully tighten the nuts with the specified torque. If excessive torque is applied, the stud may break.

Figure 7.



1	Front
2	CZ Fastener Coating Nut (Black Nut, P/N 90179-06274)

3	Lock Nut (Silver, P/N 90177-06002)
4	Curtain Shield Airbag

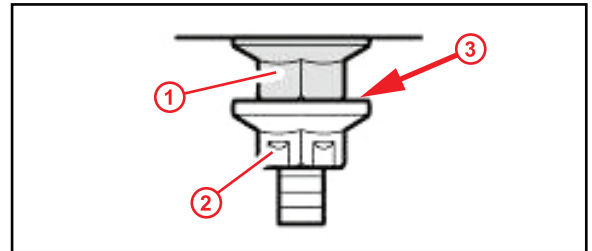
Creak Noise from Sunroof While Driving

Repair Procedure

Installation (Continued)

NOTE
Ensure that both nut surfaces are evenly and firmly in contact with each other.

Figure 8.



1	CZ Fastener Coating Nut (Black Nut, P/N 90179-06274)
2	Lock Nut (Silver, P/N 90177-06002)
3	Even, Firm Contact Between Nut Surfaces

2. Reinstall the headliner.

NOTICE
Do NOT damage the roof headliner assembly or body interior.

HINT
For additional details on the following Installation steps, please refer to the appropriate Repair Manual section(s).
Refer to TIS, applicable model and model year Repair Manual:

- 2014 IS 250/350:
Vehicle Interior – Interior Panels/Trim – “Interior Panels/Trim: Roof Headlining: [Installation](#)”

HINT
Repair any clips that become detached from the headliner using adhesive.

- A. Engage the 2 guides.
- B. Engage the 10 claws, 3 clips, and 8 fasteners to install the roof headliner assembly.
- C. Install visor holder (LH/RH).
- D. Install visor assembly (LH/RH).
- E. Install visor bracket cover (LH/RH).
- F. Install front assist grip sub-assembly (LH/RH).

Creak Noise from Sunroof While Driving

Repair Procedure

Installation (Continued)

- G. Install rear assist grip assembly (LH/RH).

HINT

Replace assist grip covers if damaged. Refer to the Parts Information section for part numbers and quantities.

- H. Install spot light assembly.
I. Install map light assembly.
J. Install rain sensor cover (w/ rain sensor).
K. Install lane departure warning camera cover (w/ lane departure alert system).
L. Install inner rear view mirror stay holder cover.
M. Install inner roof side garnish assembly (LH/RH).
N. Install rear seat side garnish (LH/RH).
O. Install center pillar garnish assembly (LH/RH).
P. Install lower center pillar garnish (LH/RH).
Q. Install rear door scuff plate (LH/RH).
R. Install front pillar garnish (LH/RH).

NOTE

Replace the upper front pillar garnish clips with new ones.

- S. Install front door opening trim cover (LH/RH).
T. Install front door scuff plate (LH/RH).
U. Install rear seat cushion assembly.
V. Install front headrests.

Creak Noise from Sunroof While Driving

Repair Procedure

Installation (Continued)

3. Reconnect the negative (-) battery terminal.

Torque: 5.5 N*m (56 kgf*cm, 49 in*lbf)

NOTE

Some systems may need to be initialized after the cable is reconnected. Systems that need to be initialized depend on how the vehicle is equipped.

Refer to TIS, applicable model and model year Repair Manual:

- 2014 IS 250/350:
Vehicle Exterior – Introduction – [“Introduction: When Removing, Installing, or Replacing Parts: Procedures Necessary When Battery Terminal is Disconnected / Reconnected”](#)
- 2014 IS 250/350:
Vehicle Exterior – Introduction – [“Introduction: When Removing, Installing, or Replacing Parts: Procedures Necessary When ECU or Other Parts Are Placed”](#)

4. Road test the vehicle to verify no abnormal noise is present.