

# Moon Roof Assembly Structure Noise

Service  
Category Vehicle Exterior

Section Exterior Panels/Trim

Market USA



## Applicability

YEAR(S)	MODEL(S)	ADDITIONAL INFORMATION
2012	Camry, Camry HV	

## Introduction

Some 2012 model year North American produced (NAP) Camry and Camry HV vehicles may exhibit a knocking, popping, ticking, or snapping noise from the moon roof area while driving. The repair procedure included in this bulletin has been developed to address this condition.

## Parts Information

PART NUMBER	PART NAME	QTY
08231-00801	Interior Noise Kit	1
63021-06030	Silencer Sub-Assy, Slide Roof (Shim Kit)	1

## Warranty Information

OP CODE	DESCRIPTION	TIME	OFP	T1	T2
BD1304	R & R Sliding Roof Housing Sub-Assembly	4.2	63111-06540	91	57
Combo A	Flex Roof Reinforcements and Install Shims	0.3			

### APPLICABLE WARRANTY

- This repair is covered under the Toyota Basic Warranty. This warranty is in effect for 36 months or 36,000 miles, whichever occurs first, from the vehicle's in-service date.
- Warranty application is limited to occurrence of the specified condition described in this bulletin.

## Moon Roof Assembly Structure Noise

### Repair Procedure

1. Confirm that the noise is coming from the moon roof area.
2. Remove the sliding roof housing.

Refer to the Technical Information System (TIS), applicable model and model year Repair Manual:

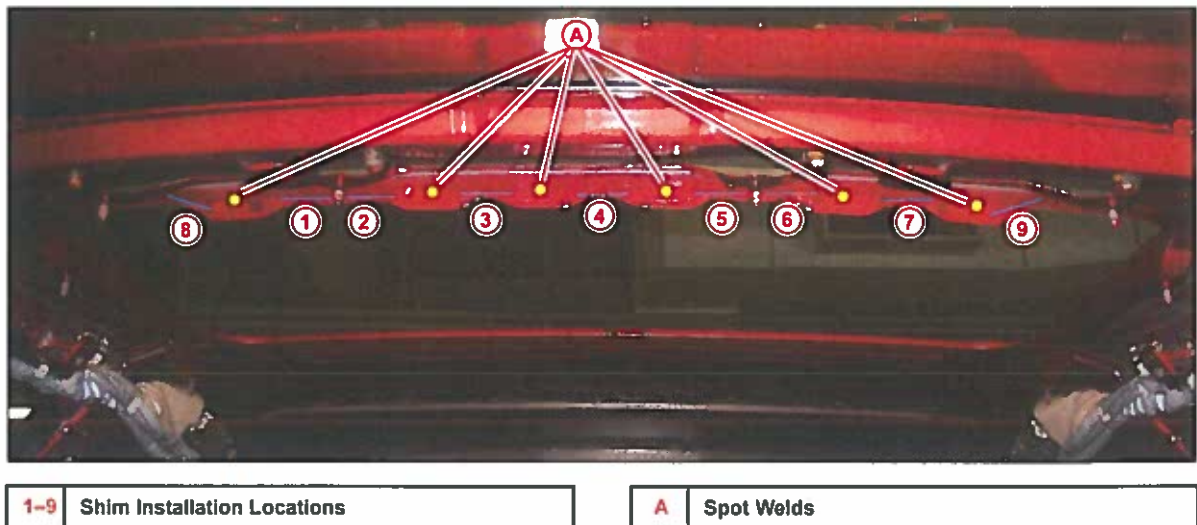
- 2012 [Camry](#) / [Camry HV](#):  
*Vehicle Exterior – Sliding Roof/Convertible – “Sliding Roof/Convertible: Sliding Roof Housing: Removal”*

3. Flex and manipulate the roof structure to separate the coating between the roof reinforcements. Continue manipulating the roof structure until the crackling noise goes away. Refer to the video for a demonstration of this procedure.

### Demonstration of Flexing Roof Structure

4. Clean out any remaining debris from the roof reinforcements with an air hose blow nozzle.
5. Install the shims in the following locations.

Figure 1.



## Moon Roof Assembly Structure Noise

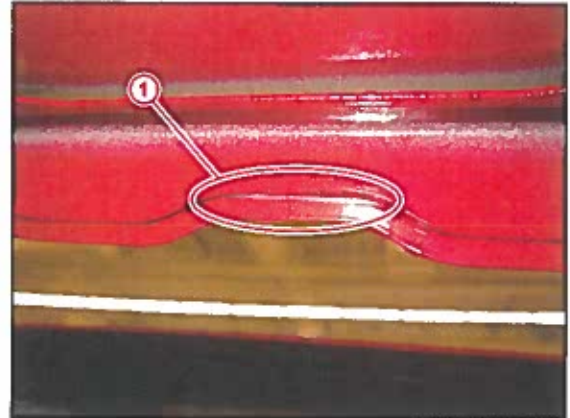
### Repair Procedure (Continued)

- A. At positions 1 – 7 (shown in Figure 1), insert the 7 shims between the spot welds.  
**Shims 1 – 7: Smaller Rectangle, 12.7 x 43.2 mm (0.5 x 1.7 in.)**

**NOTE**

At positions 1 – 2 and 5 – 6, two shims are positioned side by side with **NO** spot weld between them.

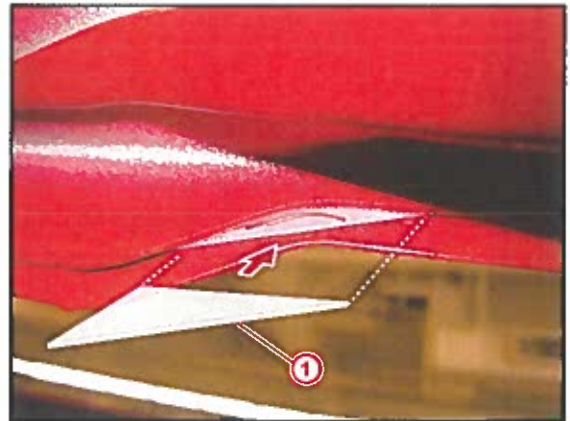
Figure 2.



1 Example of Installed Shim

- B. At positions 8 – 9 (shown in Figure 1), insert the 2 triangular shims to the outboard sides of the spot welds.  
**Shims 8 – 9: Triangle**

Figure 3.



1 Triangular Shim

## Moon Roof Assembly Structure Noise

### Repair Procedure (Continued)

- C. At positions 10 – 11 (shown in Figure 4) on both the RH and LH sides of the moon roof reinforcement structure, insert the 4 shims between the spot welds as indicated.

**Shims 10 – 11: Larger Rectangle, 25.4 x 63.5 mm (1.0 x 2.5 in.)**

**NOTE**

LH side is shown.

Figure 4.



Figure 5.



**1** Example of Installed Shims

## Moon Roof Assembly Structure Noise

### Repair Procedure (Continued)

6. From the Interior Noise Kit, use 2 felt strips in the following dimensions:

Length: 300 mm (12.00 in.)

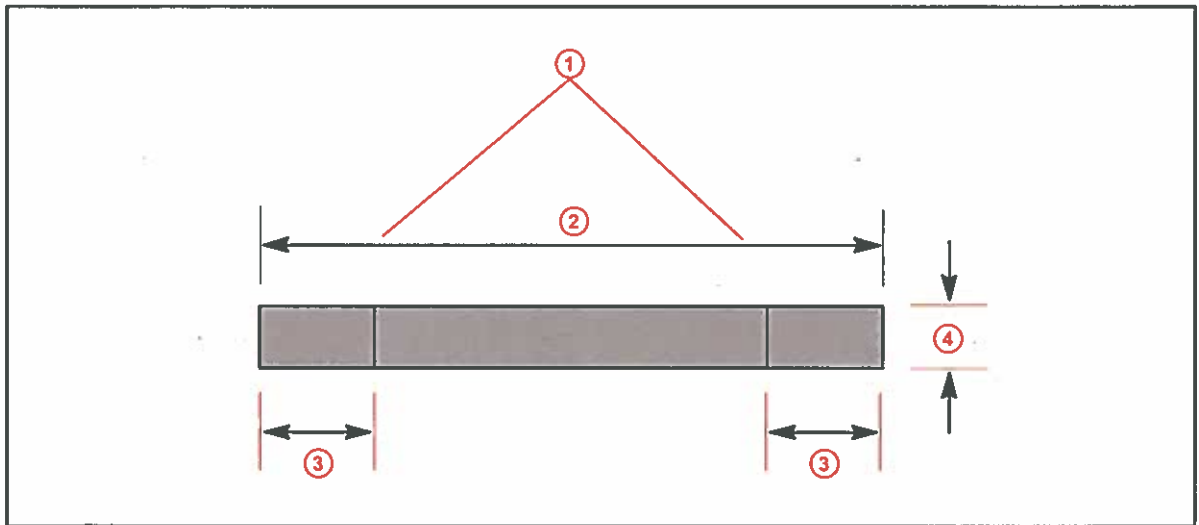
Width: 32 mm (1.25 in.)

Thickness: 0.5 mm (0.02 in.) thinnest felt sheet material in the kit

Temporarily peel back the backing paper at both ends and make a cut in the backing paper ONLY, 2 inches (50.8 mm) away from the ends. Place the backing paper back on the felt.

**NOTICE**  
Do NOT cut the felt, ONLY the backing paper.

Figure 6.



1	Cut Backing Here Before Installing on Roof
2	12.0 in. (300 mm)

3	2.0 in. (50.8 mm)
4	1.25 in. (32 mm)

## Moon Roof Assembly Structure Noise

### Repair Procedure (Continued)

- Place the felt strips on both corners of the roof structure, between the roof panel and the moon roof mounting structure panel.

**NOTICE**

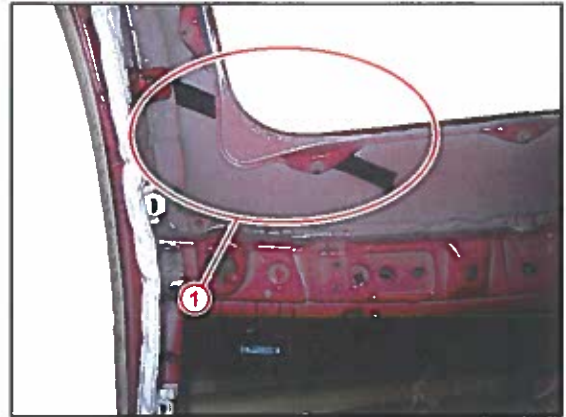
Use caution when pulling down on the moon roof mounting structure in the front mounting stud area (to make space for the felt to slide into place) to prevent damage to the roof outer sheet metal.

Once the felt is placed as close to the inner edge as possible, peel off the backing paper at the ends of the felt strip and attach the felt to the roof panel.

**NOTE**

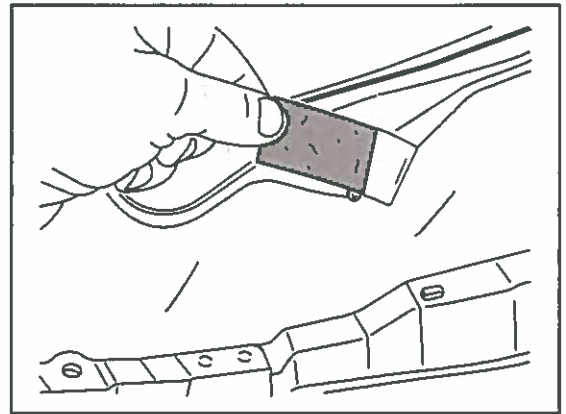
Do NOT remove the backing paper in the middle of the felt strip.

Figure 7. View Above Driver's Seat



1 Felt Strip

Figure 8.



- Perform the felt repair on both front corners of the moon roof structure.

## Moon Roof Assembly Structure Noise

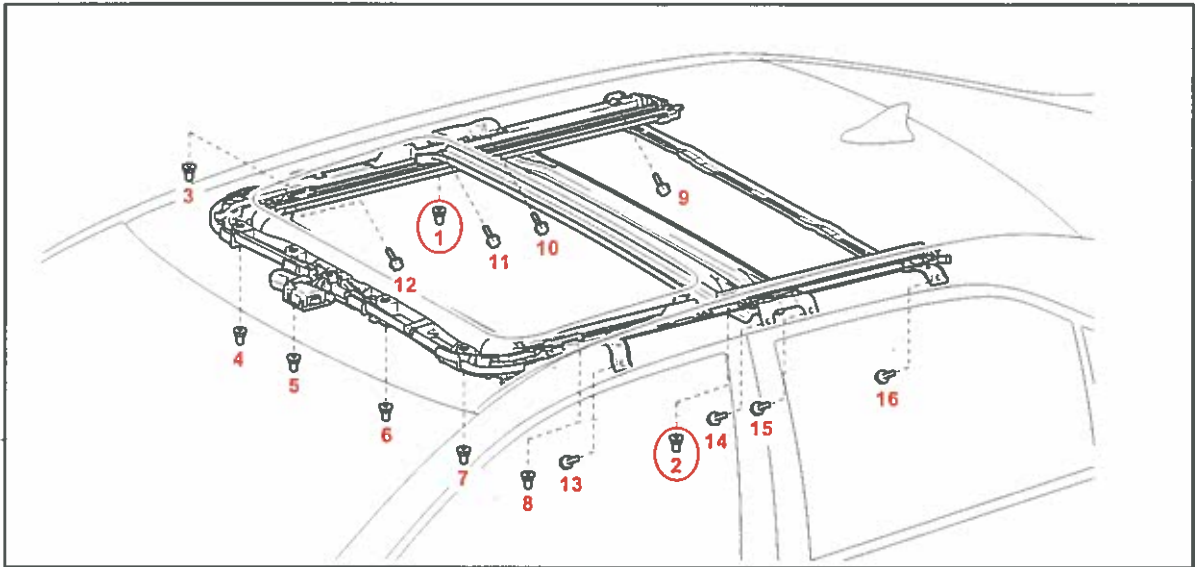
### Repair Procedure (Continued)

9. Temporarily install the sliding roof housing sub-assembly with the 8 nuts and 8 bolts.

Tighten the RH nut first and then the LH nut shown in the figure below.

Torque: 5.5 N\*m (56 kgf\*cm, 49 in\*lbf)

Figure 9.



**NOTE**

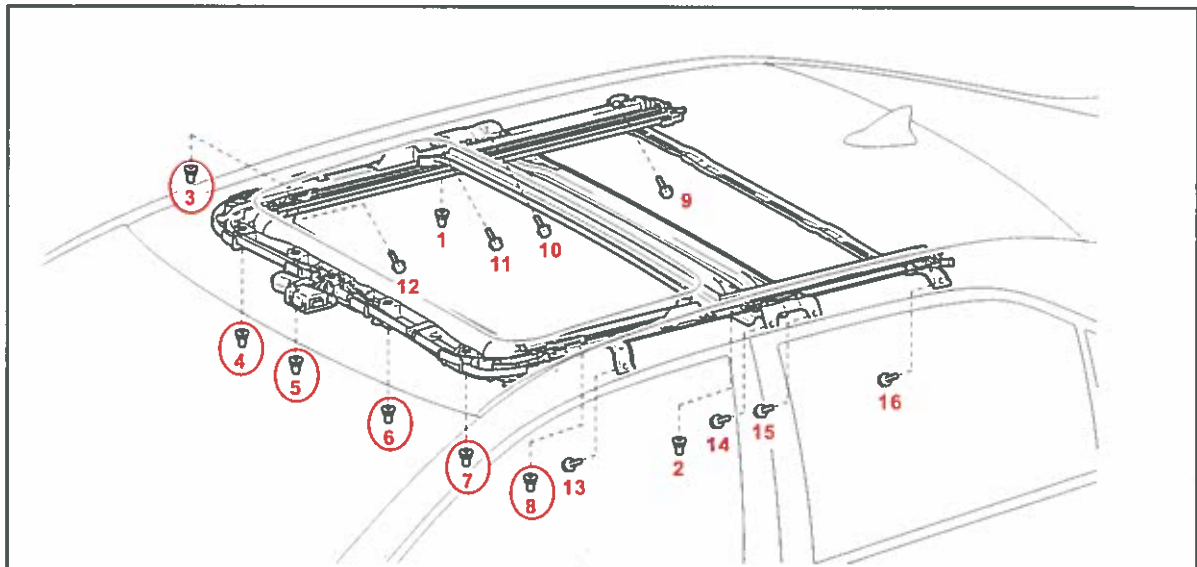
RH and LH rear nuts must be tightened before any other moon roof assembly fasteners are tightened.

## Moon Roof Assembly Structure Noise

### Repair Procedure (Continued)

10. Tighten the remaining 6 nuts.  
**Torque: 5.5 N\*m (56 kgf\*cm, 49 in\*lbf)**

Figure 10.





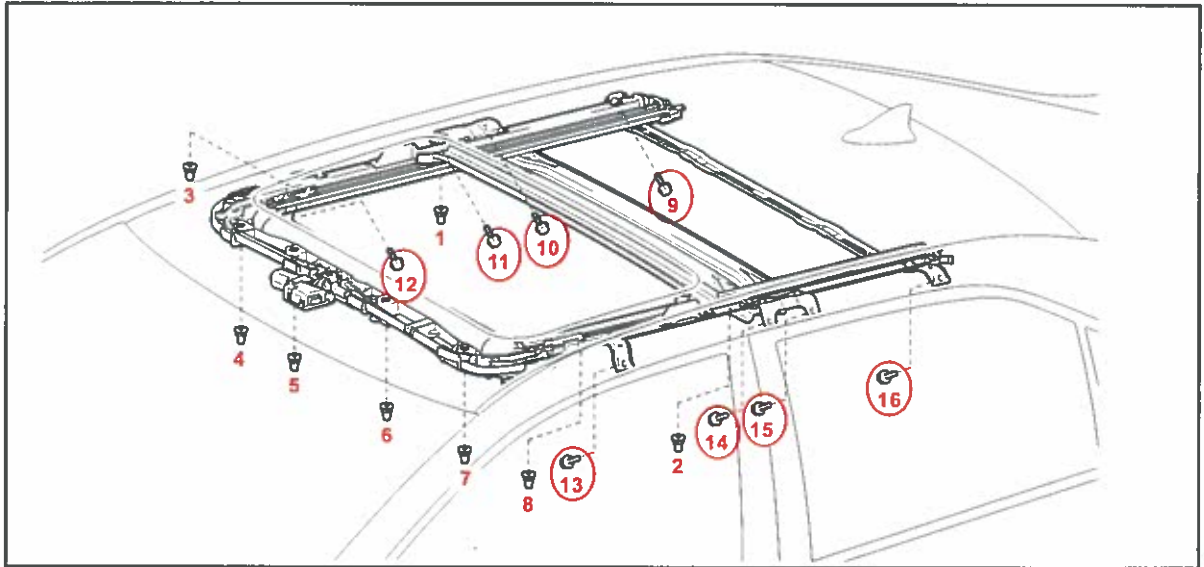
## Moon Roof Assembly Structure Noise

### Repair Procedure (Continued)

11. Tighten the 8 bolts in the order sequence shown below.

Torque: 8.0 N\*m (82 kgf\*cm, 71 in\*lbf)

Figure 11.



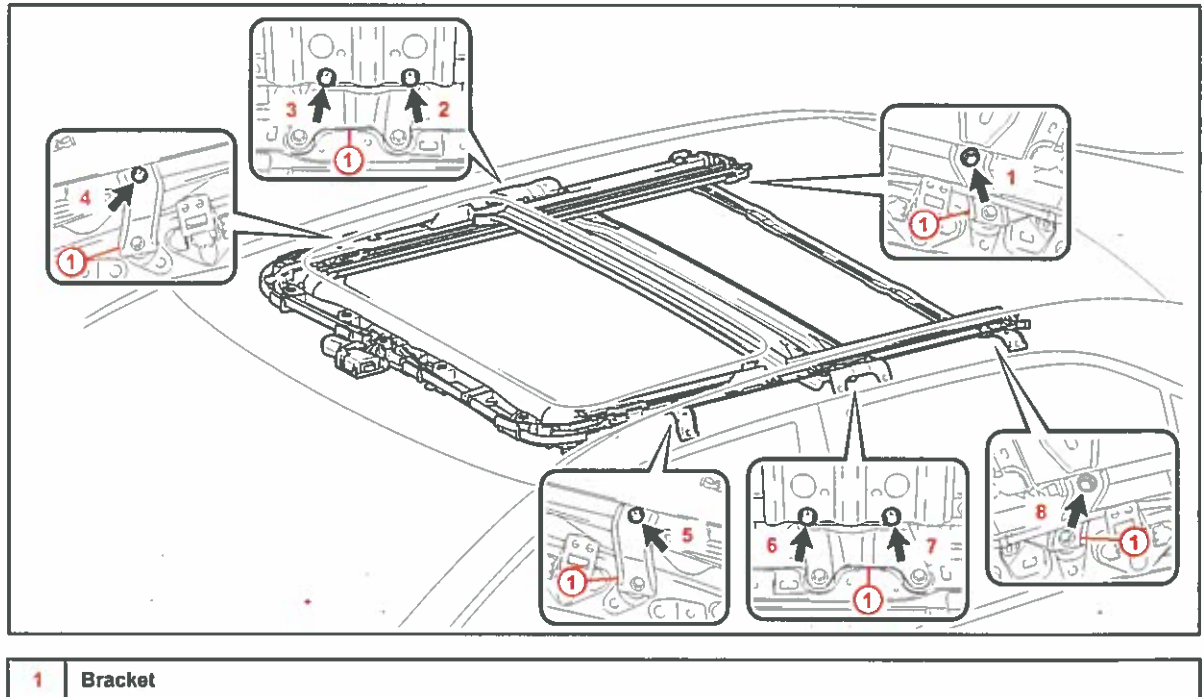
## Moon Roof Assembly Structure Noise

### Repair Procedure (Continued)

12. Tighten the 8 bolts of the brackets in the order sequence shown below.

Torque: 8.0 N\*m (82 kgf\*cm, 71 in\*lbf)

Figure 12.



13. Install the remainder of the sliding roof components.

Refer to TIS, applicable model and model year Repair Manual:

- 2012 [Camry](#) / [Camry HV](#):  
*Vehicle Exterior – Sliding Roof/Convertible – “Sliding Roof/Convertible: Sliding Roof Housing: Installation”*

14. Test drive the vehicle to verify repair.