

TECHNICAL INSTRUCTIONS
FOR
LIMITED SERVICE CAMPAIGN D0E
ECM SOFTWARE UPDATE
CERTAIN
2012-2013 MODEL TUNDRA AND SEQUOIA (3UR)

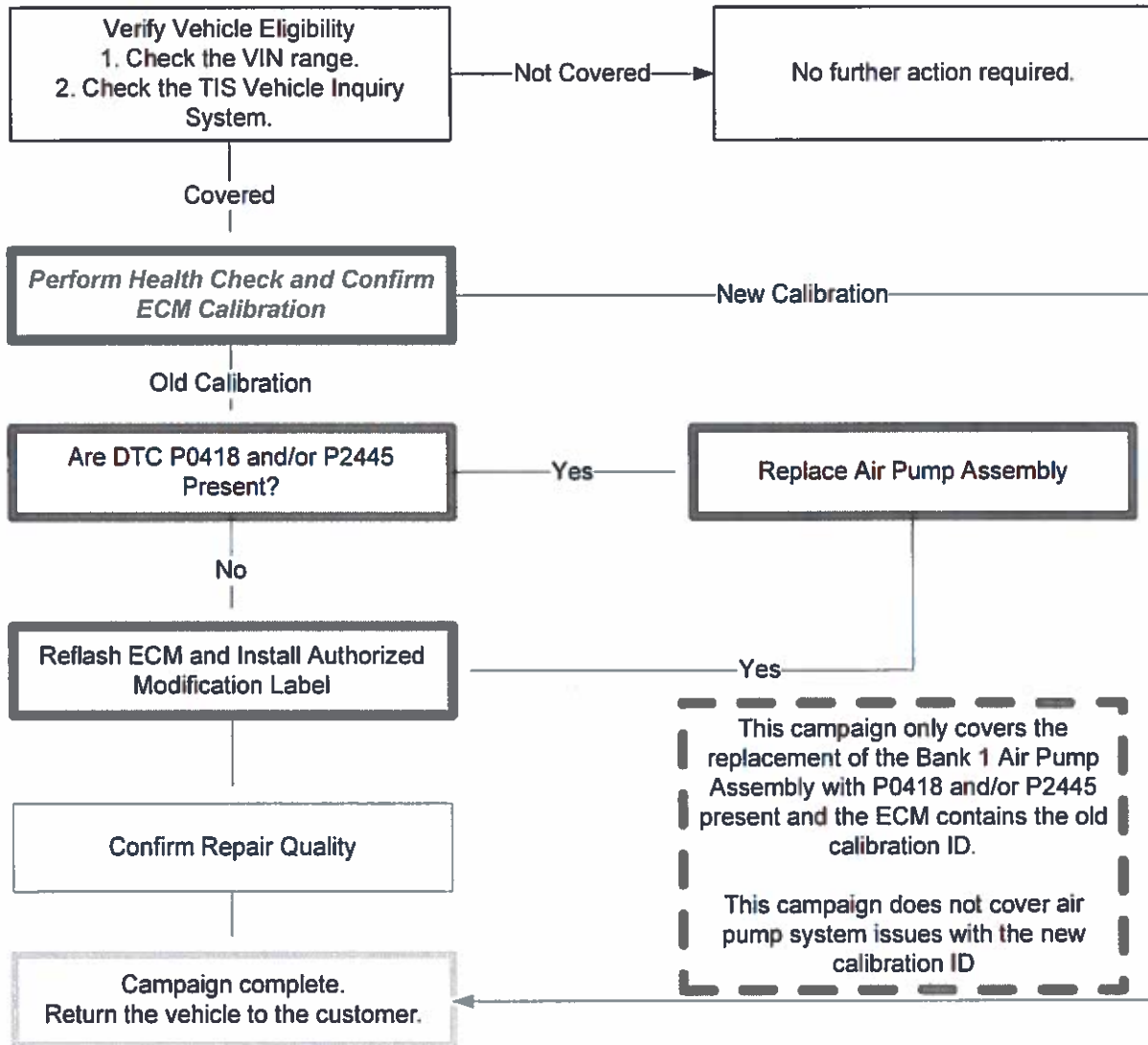
UPDATED MAY 15, 2013

TECHNICAL INSTRUCTIONS UPDATED NOTICE:

Updated 5/15/13

- Update to the VIN Break Down (SECTION II, page 3)

I. OPERATION FLOW CHART



II. IDENTIFICATION OF COVERED VEHICLES

A. COVERED VIN RANGE

Model	WMI	Year	VIN Range	
			VDS	Range
Tundra	5TF	2012	BW5F1	X210466 - X270264
			BY5F1	X210406 - X270574
			CW5F1	X012677 - X014385
			CY5F1	X012675 - X014384
			DW5F1	X210404 - X270700
			DY5F1	X210405 - X270691
			EY5F1	X115742 - X133344
			FY5F1	X115748 - X133338
			HW5F1	X210415 - X270709
			HY5F1	X210407 - X270704
			KW5F1	X004862 - X005477
			KY5F1	X004865 - X005483
			LY5F1	X119994 - X132781
			MW5F1	X225354 - X269483
			MY5F1	X225146 - X270593
			RY5F1	X115741 - X133343
			SY5F1	X115763 - X133240
			TY5F1	X007329 - X007783
		UY5F1	X209603 - X270708	
		2013	BW5F1	X270736 - X295763
			BY5F1	X270754 - X295793
			CW5F1	X014389 - X015086
			CY5F1	X014388 - X015090
			DW5F1	X270716 - X295906
			DY5F1	X270719 - X295900
			EY5F1	X133346 - X140086
			FY5F1	X133353 - X140067
			HW5F1	X270743 - X295904
			HY5F1	X270048 - X295868
			KW5F1	X005481 - X005963
			KY5F1	X005484 - X005975
			LY5F1	X134012 - X140059
			MW5F1	X271629 - X294039
			MY5F1	X270858 - X295254
RY5F1	X133345 - X140085			
SY5F1	X133347 - X140032			
TY5F1	X007784 - X007977			
UY5F1	X270712 - X295907			
UY5F1	X270711 - X295909			

Model	WMI	Year	VIN Range	
			VDS	Range
Sequoia	5TD	2012	BW5G1	S055370 - S073131
			BY5G1	S055284 - S073126
			DW5G1	S055228 - S073139
			DY5G1	S055231 - S073124
			JW5G1	S055368 - S073119
			JY5G1	S055229 - S073132
			KY5G1	S037464 - S043121
			YY5G1	S037465 - S043120
			ZY5G1	S037463 - S043119
			2013	BW5G1
		BY5G1		S072841 - S083607
		DW5G1		S072934 - S083610
		DY5G1		S072574 - S083594
		JW5G1		S072933 - S083585
		JY5G1		S072842 - S083603
		KY5G1		S043030 - S047134
		YY5G1		S043031 - S047138
		ZY5G1		S042968 - S047136

NOTE:

- Check the TIS Vehicle Inquiry System to confirm the VIN is involved in this Safety Recall, and that the campaign has not already been completed prior to dealer shipment or by another dealer.
- TMS warranty will not reimburse dealers for repairs conducted on vehicles that are not covered or were completed by another dealer.

III. PREPARATION

A. PARTS

Part Number	Part Description	Quantity
00451-00001-LBL*	Authorized Modification Label	1

*Labels can be ordered in packs of 25 from the MDC through the Dealer Daily Website

Only If DTC P0418 and/or P2445 are present:

Part Number	Part Description	Quantity
17610-0S030*	Air Pump Assembly*	1

B. TOOLS, SUPPLIES & EQUIPMENT

- Standard Hand Tools
- Techstream 2.0 / TIS Techstream / Techstream Lite (Software Version 8.00.034 or Later)
- GR8 Diagnostic Station

IV. BACKGROUND

In certain 2012 – 2013 Model Year Toyota Tundra and Sequoia vehicles equipped with a 5.7 Liter gasoline or 5.7 Liter-Flex Fuel engines, the Engine Control Module (ECM) calibration may cause an emissions control component called an Air Injection Pump to fail under certain driving conditions. If this occurs, the vehicle could enter a "Fail-Safe" Mode (also known as "Limp-Home" Mode). This mode reduces the vehicle's power and speed, which could inconvenience you and require immediate repair.

V. ECM CALIBRATION ID VERIFICATION AND DTC CHECK

A. CONFIRM ECM CALIBRATION ID

- 1) Perform a health check
- 2) Confirm the calibration ID in the ECM.

MODEL	YEAR	ENGINE	DRIVETRAIN	TOWING OPTION	OLD CALIBRATION ID	UPDATED CALIBRATION ID		
TUNDRA	2012-2013	3UR-FE	2WD	STANDARD	30CJ5000 30CJ5100 30CJ5200	<u>30CJ5300</u>		
			4WD		30CJ5001 30CJ5101 30CJ5201	<u>30CJ5301</u>		
			2WD	TOW	30CJ6000 30CJ6100 30CJ6200	<u>30CJ6300</u>		
			4WD		30CJ6001 30CJ6101 30CJ6201	<u>30CJ6301</u>		
		3UR-FBE	4WD	STANDARD	30CJ9000 30CJ9100 30CJ9200	<u>30CJ9300</u>		
				TOW	30CK0000 30CK0100 30CK0200	<u>30CK0300</u>		
		SEQUOIA	2012-2013	3UR-FE	2WD	STANDARD	30CK2000 30CK2100 30CK2200	<u>30CK2300</u>
					4WD		30CK2001 30CK2101 30CK2201	<u>30CK2301</u>
2WD	TOW				30CK1000 30CK1100 30CK1200	<u>30CK1300</u>		
4WD					30CK1001 30CK1101 30CK1201	<u>30CK1301</u>		
3UR-FBE	4WD			STANDARD	30CK5000 30CK5100 30CK5200	<u>30CK5300</u>		
				TOW	30CK6000 30CK6100 30CK6200	<u>30CK6300</u>		



- If the ECM has already been calibrated with the new calibration the campaign is complete.

B. CHECK FOR STORED DTC(S)

- 1) Confirm if one or both of the following DTC are stored in the system.
 - P0418 – Secondary Air Injection System Control "A" Circuit
 - P2445 – Secondary Air Injection Pump Stuck OFF Bank 1

Condition	Action Required
ECM Contains Old Cal ID and Neither DTC is Present	Proceed with ECM Reflash <u>Only!</u>
ECM contains Old Cal ID and P0418 and/or P2445 is present	Proceed with ECM Reflash and Bank 1 Air Pump Assembly Replacement



- If the ECM has the updated calibration and P0418 and/or P2445 it is not covered under this campaign.

VI. ECM REFLASH PROCEDURE

A. CONNECT THE GR8

- a) Set the GR8 to Power Supply Mode to help maintain 13.5 volts during ECM reprogramming.



- A battery charger set to power supply mode **MUST** be used during reprogramming.
- ECM damage may occur if the correct battery charger setting is not used.

B. REFLASH THE ECM

- a) Click yes on the health check results screen, or follow the links on the table above to begin the reflash process.

NOTE:

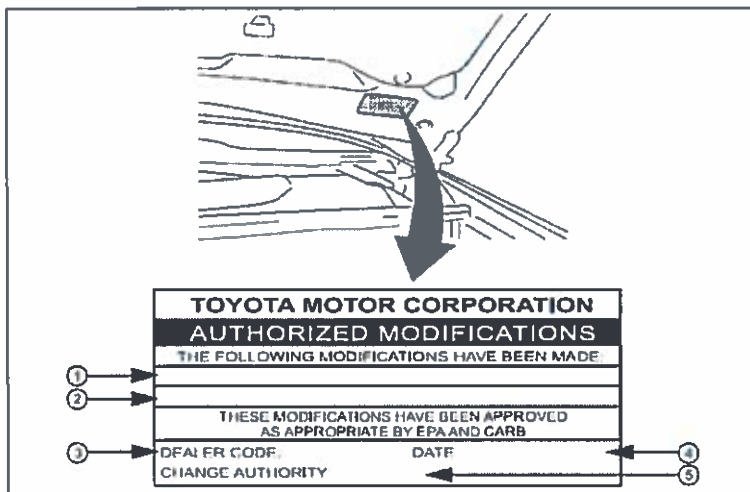
- For general reprogramming procedures, refer to [T-SB-0012-13](#).
- Confirm the latest version of Techstream software is being used.



- If the Techstream does not have sufficient battery power the reflash will fail.
- Confirm the DLC3 cable is in good condition before attempting reflash.

C. ATTACH THE AUTHORIZED VEHICLE MODIFICATION LABEL

- a) Fill out the label.
b) Affix the label to the under-side of the hood.



1	ECM P/N
2	New Calibration ID
3	Dealer Code
4	Date Completed
5	Campaign Code (DOE)

1. CHECK FOR DTCs

VII. BANK 1 PUMP ASSEMBLY REPLACEMENT (if required)

Refer to TIS for instruction on Bank 1 Pump Assembly removal/installation

- 2012 Tundra (3UR-FE) Air Pump [Removal / Installation](#)
- 2012 Tundra (3UR-FBE) Air Pump [Removal / Installation](#)
- 2013 Tundra (3UR-FE) Air Pump [Removal / Installation](#)
- 2013 Tundra (3UR-FBE) Air Pump [Removal / Installation](#)
- 2012 Sequoia (3UR-FE) Air Pump [Removal / Installation](#)
- 2012 Sequoia (3UR-FBE) Air Pump [Removal / Installation](#)
- 2013 Sequoia (3UR-FE) Air Pump [Removal / Installation](#)
- 2013 Sequoia (3UR-FBE) Air Pump [Removal / Installation](#)

◀ VERIFY REPAIR QUALITY ▶

- Confirm the ECM Calibration has been updated successfully
- Confirm *that an* Authorized Modification Label has been installed
- If you have any questions regarding this recall, please contact your regional representative

VIII. APPENDIX

A. CAMPAIGN DESIGNATION DECODER

