

# Front License Plate & Mounting Bracket Installation

**Service Category** General

**Section** Pre-Delivery Service

**Market** USA

Lexus Supports  
ASE Certification 

## Applicability

YEAR(S)	MODEL(S)	ADDITIONAL INFORMATION
2014	IS250, IS350	

## Introduction

The front license plate mounting bracket and two self-tapping screws for the 2014 model year IS 250/350 are placed in the luggage compartment of the vehicle at the assembly plant. For states that require a front license plate, install the bracket and bolts on the bumper cover during Pre-Delivery Service (PDS) according to the following procedures.

## Warranty Information

OP CODE	DESCRIPTION	TIME	OFP	T1	T2
N/A	Not Applicable to Warranty	–	–	–	–

## Front License Plate & Mounting Bracket Installation

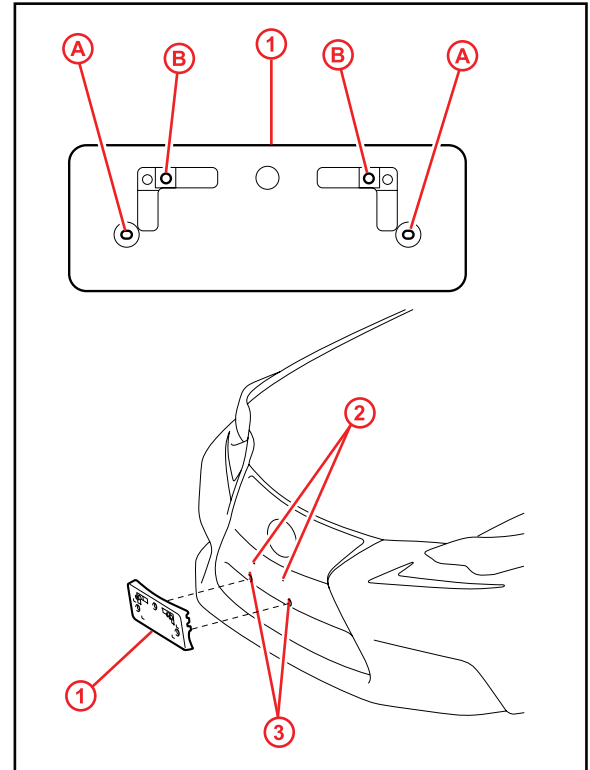
### Installation Procedure

1. Align holes "A" of the mounting bracket with the dimples on the front bumper cover. Mark the location of holes "B" on the front bumper cover.

**NOTE**

- Holes "A" are used to install the mounting bracket to the bumper cover.
- Holes "B" are used for installation of the front license plate to the mounting bracket.

Figure 1.



1	Mounting Bracket
2	Mark and Drill Holes
3	Dimples

2. Drill two relief holes with a diameter of 10 mm (0.39 in.) at the marks on the front bumper cover (holes "B" location) to prevent the license plate retaining bolt ends from contacting the cover.

**NOTE**

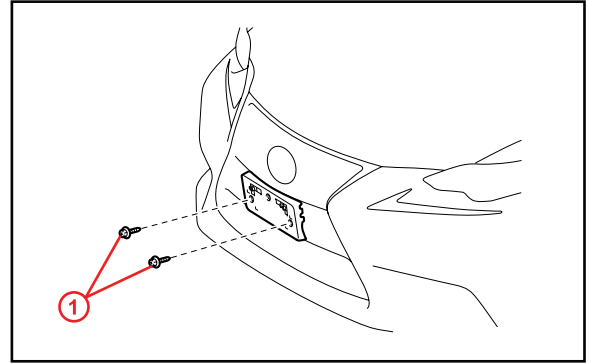
Do NOT drill into the dimples on the front bumper cover.

## Front License Plate & Mounting Bracket Installation

### Installation Procedure (Continued)

3. Install the mounting bracket to the front bumper cover at holes "A" using the 2 supplied self-tapping screws.

Figure 2.



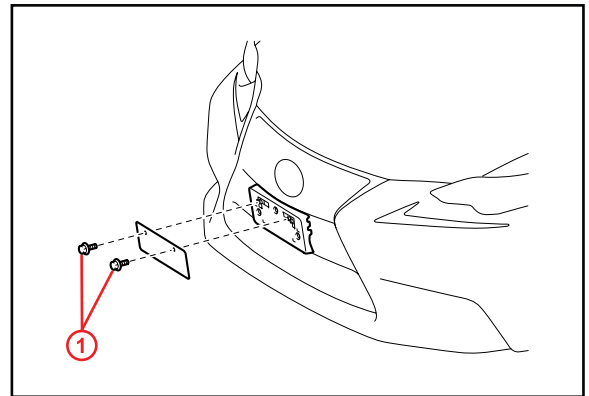
1	Self-Tapping Screws into Holes "A"
---	------------------------------------

4. Install the front license plate to the mounting bracket at holes "B" using two non-corroding bolts with the following dimensions.

**Nominal Length: 15.0 mm (0.59 in.)**

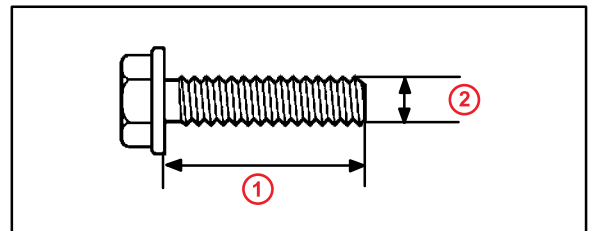
**Diameter: 6.0 mm (0.24 in.)**

Figure 3.



1	Bolts into Holes "B"
---	----------------------

Figure 4.



1	Nominal Length
2	Diameter