

PREVOST

Instruction Sheet

IS-08080A

Sound Selector replacement, VSS04 vs. VSS05

Revised Sept.2016 (new std radio part #)

DESCRIPTION

When replacing a vehicle sound selector model VSS04 with a new sound selector model VSS05, an interface harness is required to connect the vehicle harness to the new sound selector model and a new VSS05 compatible radio unit must also be installed. This procedure describes the steps required to perform this update.

MATERIAL

Kit #409439 includes the following parts: 21285274, IS-08080A and FI-08080A

Part #	Description	QTY
21516503	Sound Selector Control Head VSS05	1
409439	Interface Harness Kit	1
90143X	Radio Unit (See radio replacement guide below)	1

NOTE

Material can be obtained through regular channels.

RADIO REPLACEMENT GUIDE

Type	Preprogrammed Part #	STD part #	Description
AM-FM	901417P	901437	Radio Delphi CD MP3 Blue-Tooth
SIRIUS	901418P	901438	Radio Delphi CD MP3 Blue-Tooth SIRIUS
XM	901419P	901439	Radio Delphi CD MP3 Blue-Tooth XM

NOTE: Radios with a part # ending with "P" are preprogrammed, ready to use units. In case a preprogrammed unit is not readily available, a STD unit can be substituted but will require being programmed at a PrevoSt Service Center using Premium Tech Tool (PTT) and a warehouse ID. (Refer to Service Center Information [SCI13-51](#) for the complete programming procedure)

REMOVAL AND INSTALATION PROCEDURE



DANGER

Park vehicle safely, apply parking brake, stop engine and set battery master switch(es) to the OFF position prior to working on the vehicle.

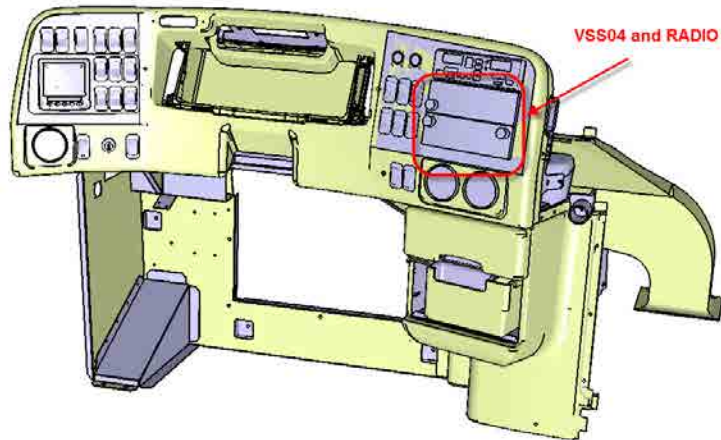


Fig.1 Position of VSS04 and radio in a typical dashboard

1. To gain access to the radio and sound selector (VSS) connections, remove the dashboard cover by unscrewing the five (5) M4 – 0.7x 20 screws that secure it to the dashboard (Fig.2).

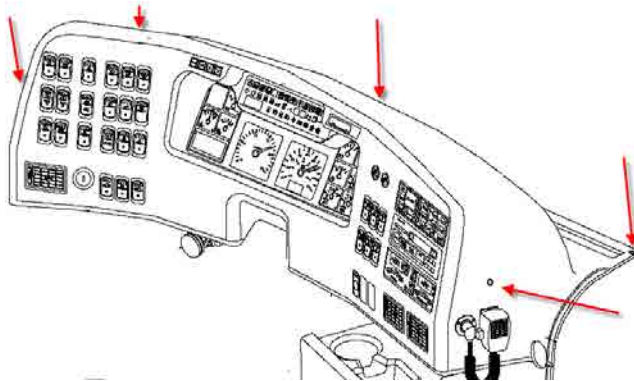


Fig.2 Cover retaining screws position

2. Using a small flat head screwdriver, disconnect the five (5) connectors at the back of the sound selector (VSS) (Fig.3).

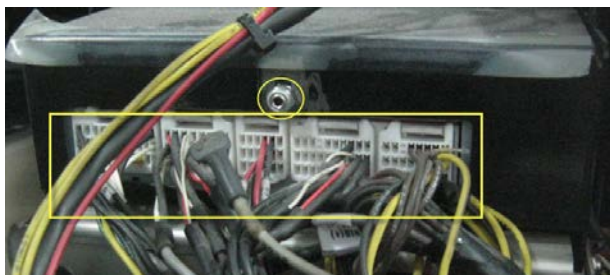


Fig.3 Conectors and retaining hex nut.

3. Remove the hex nut that holds the sound selector to the dashboard support (Fig.3).
4. Repeat operations 2 and 3 for the radio; remove the hex nut, harness and antenna.
5. Insert two (2) flat radio removing tools in the vertical openings located on both sides of the sound selector front panel and pull out the sound selector (Fig.4 and Fig.5).

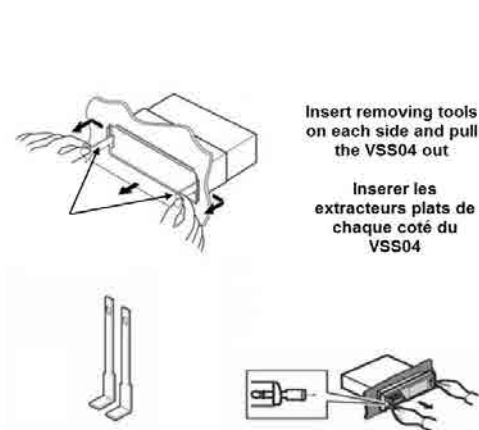


Fig.4 VSS removal with flat removing tools. faces.



Fig.5 vertical openings and holes position on the VSS and radio unit

6. Insert two (2) U-shaped radio removing tools in the four (4) holes located on both sides of the radio front panel and pull it out (Fig.5 and Fig.6).

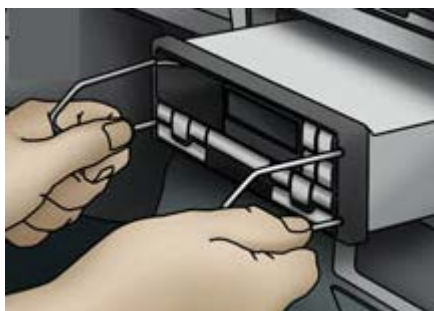


Fig.6 Typical radio removal using U-shaped tools.

NOTE: Some radio models may require flat radio removing tools.

7. Before installing the new VSS05 sound selector in place, the back support opening will need to be enlarged to allow sufficient clearance for the bigger VSS05 connectors. Use a die grinder and a small cutting wheel or a suitable carbide bit and follow Fig.7 and Fig.8 below.

NOTE: Do not cut through the central hex nut area of the support.

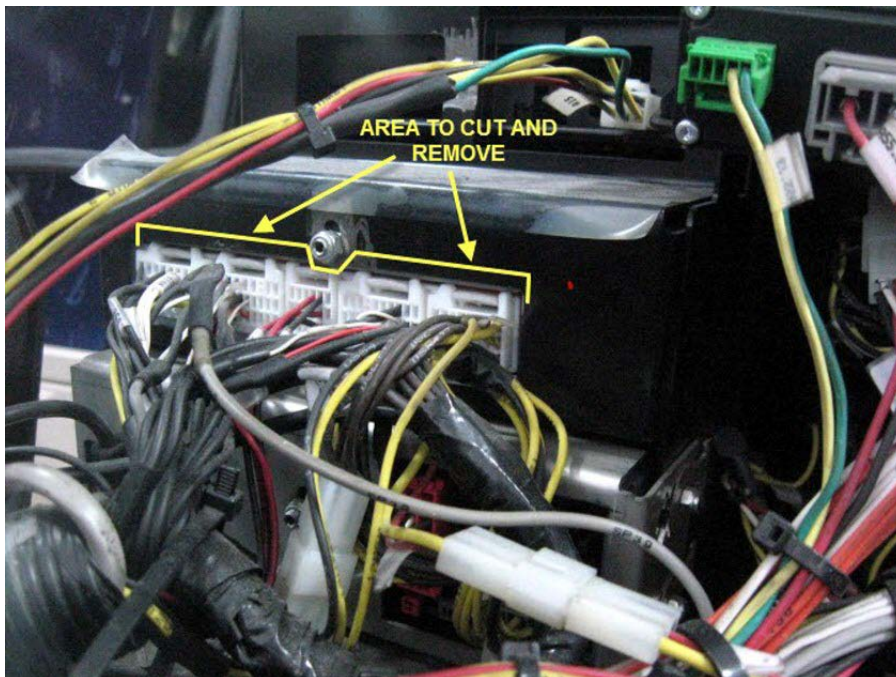


Fig.7 Area on the sound selector support to be enlarged.

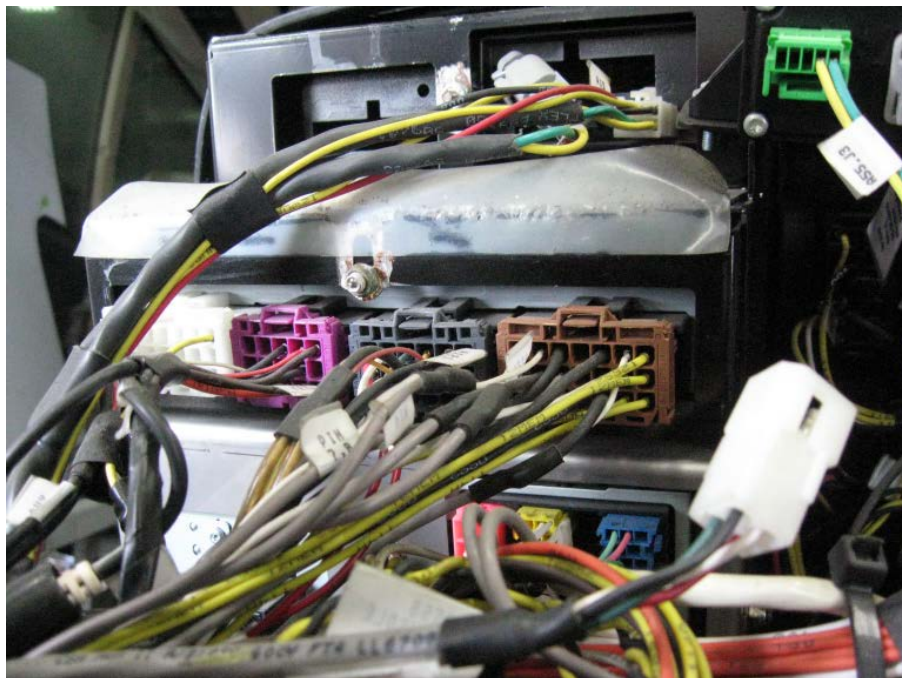


Fig.8 Installed VSS05 showing enlarged support opening and bigger harness connectors.

- Using Fig.9 below, locate the connectors groups on the interface harness required to connect the VSS05 sound selector to the VSS04 vehicle harness.

NOTE: To avoid improper connection, the interface harness connectors are all shaped differently.

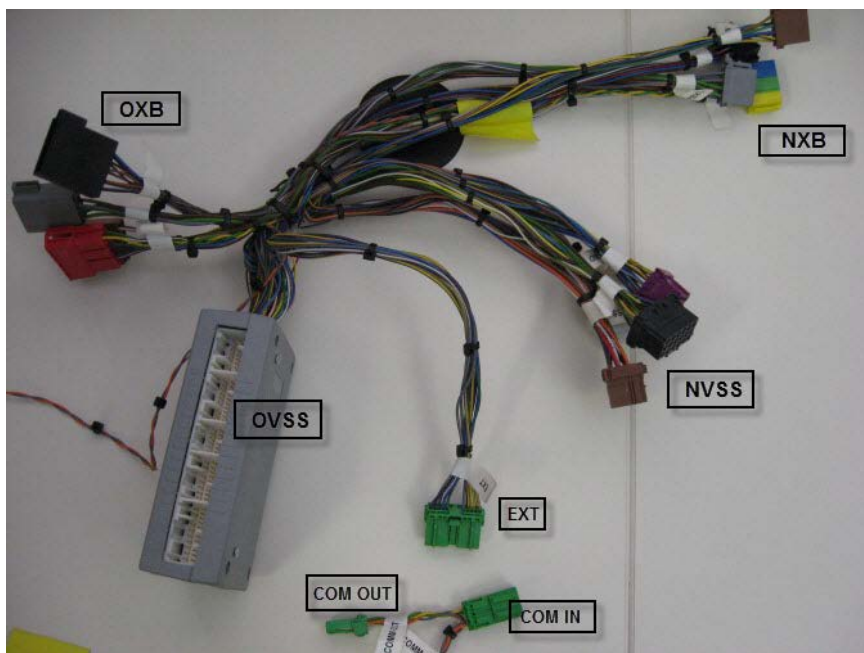


Fig.9 Interface harness connectors identification.

- Insert the new VSS05 sound selector and the new radio into the dashboard support and tighten the hex nut at the back of each unit.

10. Position the interface harness into the dashboard and connect the harness following Fig.10 and instructions below.

NOTE: It may be necessary to re-route part of the factory harness to gain sufficient clearance to allow the dashboard cover to be put back into place.

-Connect Interface harness box OVSS (A), OVSS (B), OVSS (C), OVSS (D) and OVSS (E) to the vehicle VSS04 wiring harness.

-Connect interface harness OXB (A), OXB (B), OXB (C) and OXB (D) connectors to the vehicle wiring harness radio connectors.

-Connect interface harness NVSS (A), NVSS (B), NVSS (C) and NVSS (D) connectors to the new VSS05 sound selector.

-Connect interface harness NXB (A), NXB (B), NXB (C) and NXB (D) connectors to the new radio.

-Connectors EXT, COM IN and COM OUT are not used.

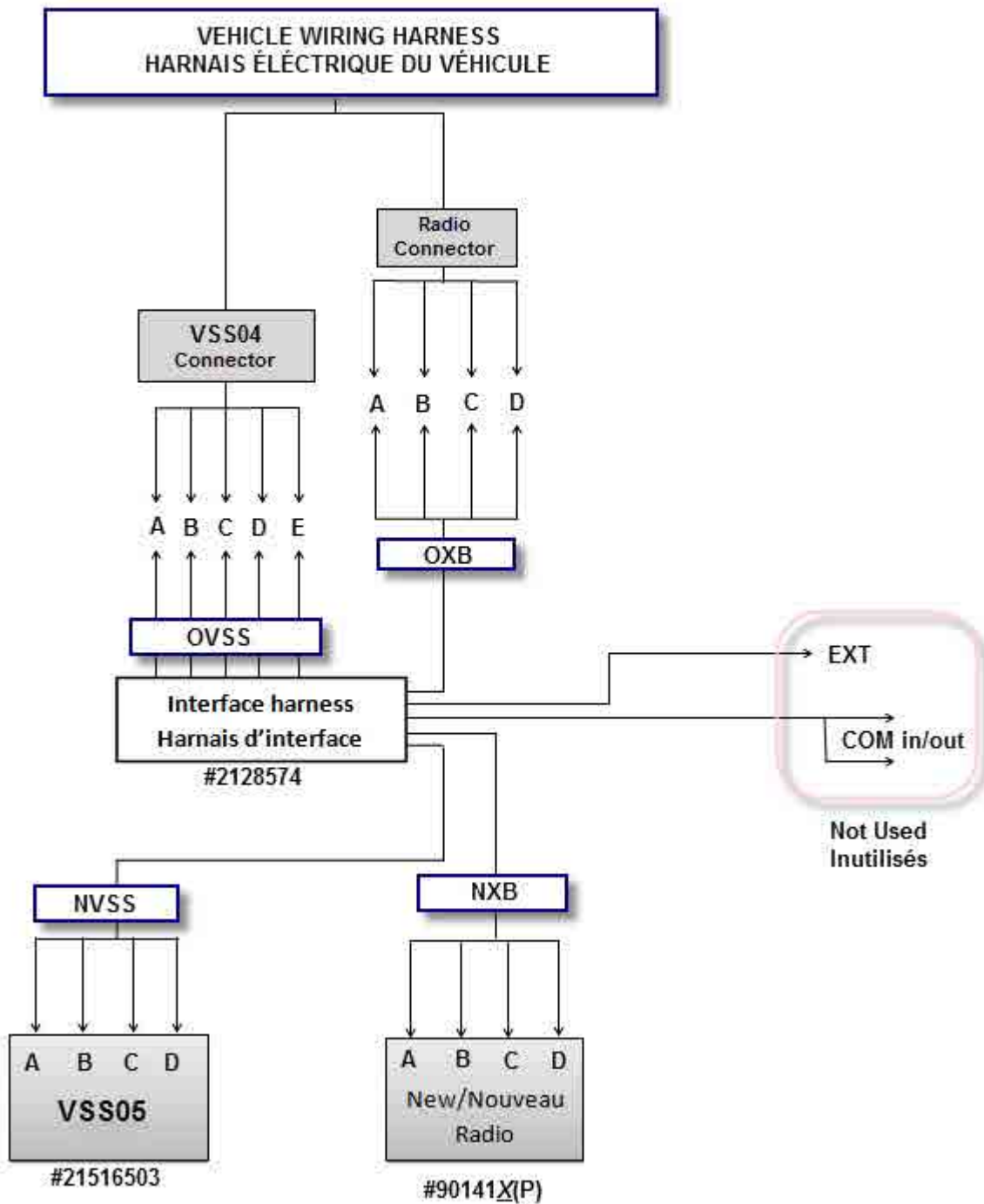


Fig.10 Interface harness, VSS05 and corresponding radio installation diagram.

11. Double check that the sound selector and the radio are firmly positioned in their respective location and that all connections are tight. Use cable ties as required to secure the harness to the dashboard supports.
12. If a preprogrammed radio was used for installation, reconnect the battery and check sound selector and radio functions. If a non-programmed radio was used, contact the nearest Prevost Service Center to have it programmed following procedure [SCI13-51](#).
13. Reinstall the dashboard cover.

PARTS / WASTE DISPOSAL

Discard waste according to applicable environmental regulations (Municipal/State[Prov.]/ Federal)