

SP13-44 LIGHT SWITCH IN BAGGAGE COMPARTMENT  
REFER TO SAP FOR CODES AND VEHICLES  
VEUILLEZ VOUS RÉFÉRER AU RETROFIT R13056 POUR LA VERSION FRANCAISE

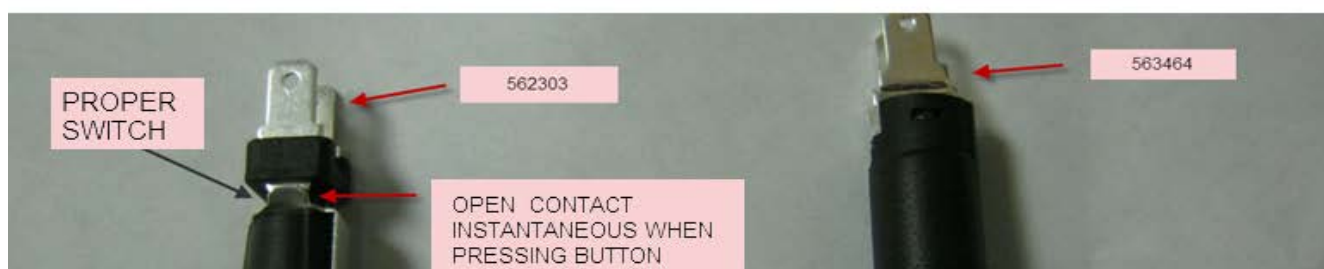
LIGHT SWITCH MAY OPERATE INCORRECTLY WHEN DOORS ARE CLOSED.

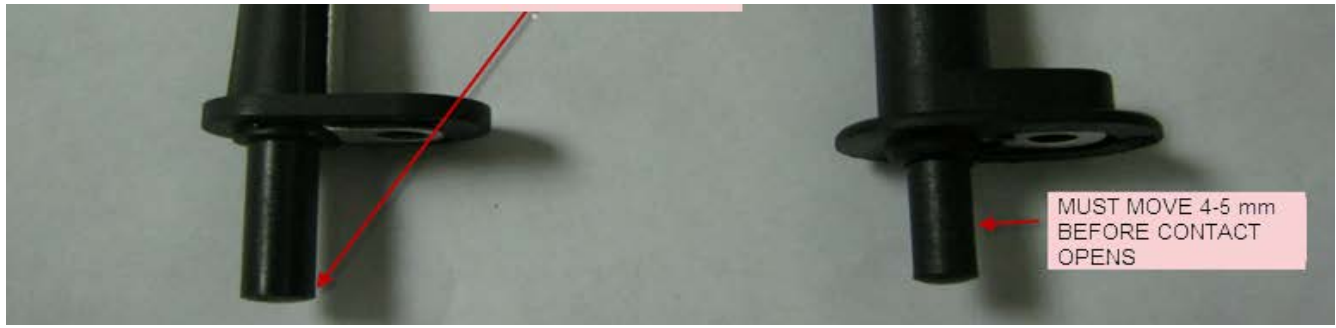
LIGHTS REMAIN "ON" INDEFINITELY.

ALL X SERIES VEHICLES WITH ALUMINUM DOORS ARE INCLUDED.

IN THE BAGGAGE COMPARTMENTS CHANGE ALL 563424 SWITCHES BY 562303 (6 TOTAL), EXCEPT FOR THE WCL DOOR (ALREADY HAS THE NEW SWITCH).

CHECK PROPER OPERATION AFTER REPLACING THE SWITCHES





MUST MOVE 4-5 mm  
BEFORE CONTACT  
OPENS