



PREVOST

SERVICE CENTER INFORMATION

SCI12-46A

DATE : JANUARY 2013	SECTION :	22 - HVAC
SUBJECT : EVAPORATOR FILTER RELOCATION		

REVISION : A	This version supercedes previous version.
Date changed to publication date.	

APPLICATION

Model	VIN	
Le Mirage XLII Entertainer Model Year : 2008 - 2012	From 2PCY334968C729385 up to 2PCYS3491CC735235 incl.	

DESCRIPTION

Customers receive FI-12050 which refers to this SCI.

This procedure will guide you through the steps required to relocate the evaporator filters on Le Mirage XL-II Entertainers.

The heating coil in the evaporator compartment should be drained from coolant and some work and assembly is required on the filter box prior to carrying out the actual modification on the vehicle.

Please read the complete procedure before starting.

SPECIAL TOOLS



5/8" to 2 1/8" pipe cutter



ABS conduit or other means for coolant recovery.



Right angle drill

MATERIALKit #374694 Vehicles **with** a slide out extension over HVAC evaporator compartment.

Part No.	Description	Qty
370354	DECAL, M5 HVAC FILTER FE	1
374675	PLENUM EVAP, W/EXT ASSY	1
374681	CLOSING, FILTER	1
374685	SUPPORT, EVAPORATOR DUCT	1
374690	CENTRAL WATER VALVE, ASSY	1
374691	PIPE, OUTLET HEATING COIL ASSY	1
500411	FLAT WASHER	1
500957	SCR TP BDG PH N500 #10X3/4	13
500957	SCR TP BDG PH N500 #10X3/4	1
502737	CAP SCREW M6	1
502854	NUT M6	1
504323	GROMMET	1
504428	CABLE TIE BASE	2
504604	STEEL RETAINER 6 MM	3
504605	RECEPTACLE 6 MM	3
504681	STUD 6MM (DZUS)	3
506268	RUB AD1 POL 3/8" X 1/2" X 25'	21.6 in
871447	AIR FILTER	2
5001744	SCR CAP HEX N500 M6-1.0X16 G8.8	3
5001833	WSH BEL SPR SS 301 6.65X17.4X1.27	3
FI12050	FEUILLE D'INSTRUCTIONS	1
IS12050	INSTRUCTION SHEET	1

Kit #374695 Vehicles **without** a slide-out extension over HVAC evaporator compartment.

Part No.	Description	Qty
370354	DECAL, M5 HVAC FILTER FE	1
374679	PLENUM EVAP, W/O EXT ASSY	1
374681	CLOSING, FILTER	1
374684	SUPPORT, EVAPORATOR DUCT	1
374690	CENTRAL WATER VALVE, ASSY	1
374691	PIPE, OUTLET HEATING COIL ASSY	1
500411	FLAT WASHER	1
500957	SCR TP BDG PH N500 #10x3/4	19
500957	SCR TP BDG PH N500 #10x3/4	1
502737	CAP SCREW M6	1
502854	NUT M6	1
504323	GROMMET	1
504428	CABLE TIE BASE	2
504604	STEEL RETAINER 6 MM	3
504605	RECEPTACLE 6 MM	3
504681	STUD 6MM (DZUS)	3
506268	RUB AD1 POL 3/8" x 1/2" x 25'	21.6 in
871447	AIR FILTER	2
5001744	SCR CAP HEX N500 M6-1.0x16 G8.8	3
5001833	WSH BEL SPR SS 301 6.65X17.4X1.27	3
FI12050	FEUILLE D'INSTRUCTIONS	1
IS12050	INSTRUCTION SHEET	1

NOTE

Material can be obtained through regular channels.

PROCEDURE



DANGER

Park vehicle safely, apply parking brake, stop engine and set battery master switch(es) to the OFF position prior to working on the vehicle.

Preparation for work

1. Close heating valves.



2. Open filter access door.
Remove filters
Remove decal with heat gun.



3. Drain heating system by drain cock at bottom of heating coil.

Drain the coolant into a suitable container

Keep coolant for re-use.
Recovered volume is about 10 liters (2.6 US gal).

To avoid spilling coolant, use a slit ABS tube or other means to empty heating system.

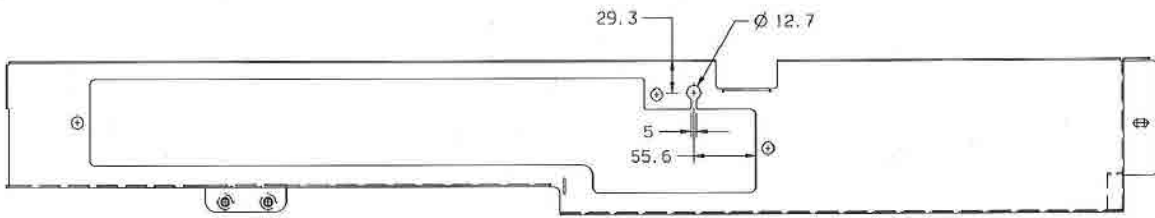


4. Dismount the door stopper to provide full access to the area.

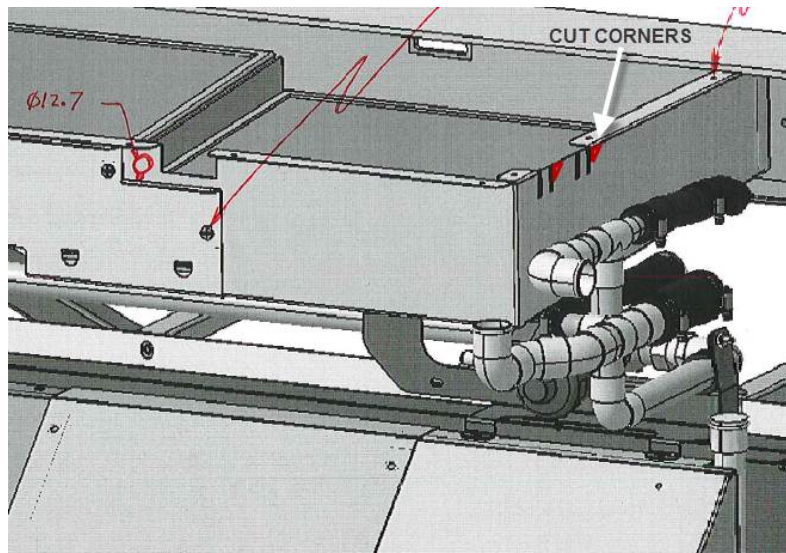


5. Prepare the filter support box for assembly. (374675 or 374679).

- Drill a ½" (12.7mm) hole for the grommet.



- Cut these corners for easy installation.



- Install the quarter turn receptacles, slit the grommet and install it in the hole.



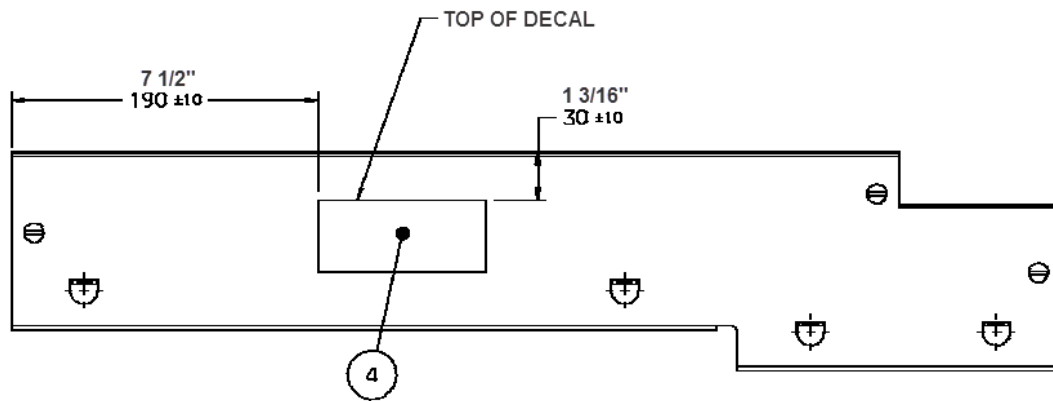
6. Assemble the access panel.

Short foam is 5 7/8" long. Long foam is 14 1/2" long

Assemble quarter turn studs on panel with retainer washers.



Place "Filter" sticker at this position.



Filter relocation procedure

1. Remove the flexible connections



2. Remove the ducts. Keep screws.

The right hand duct is hard to remove due to the presence of a baffle.

To help removal, remove the right hand plastic adapter, fan side.



3. Remove the front tube support.



4. Remove the mid support



5. Keep the rear support, clamp, hardware and mounting screw for re-use.



6. Remove the cable tie holding the temperature sensor cable

7. Remove all pneumatic and electrical connections to the central water valve. Keep the connector gasket for re-use.



8. Unplug the valve piping assembly.

Some coolant may remain in the tube.
Recover coolant in an appropriate container.



9. Removed central valve piping assembly.

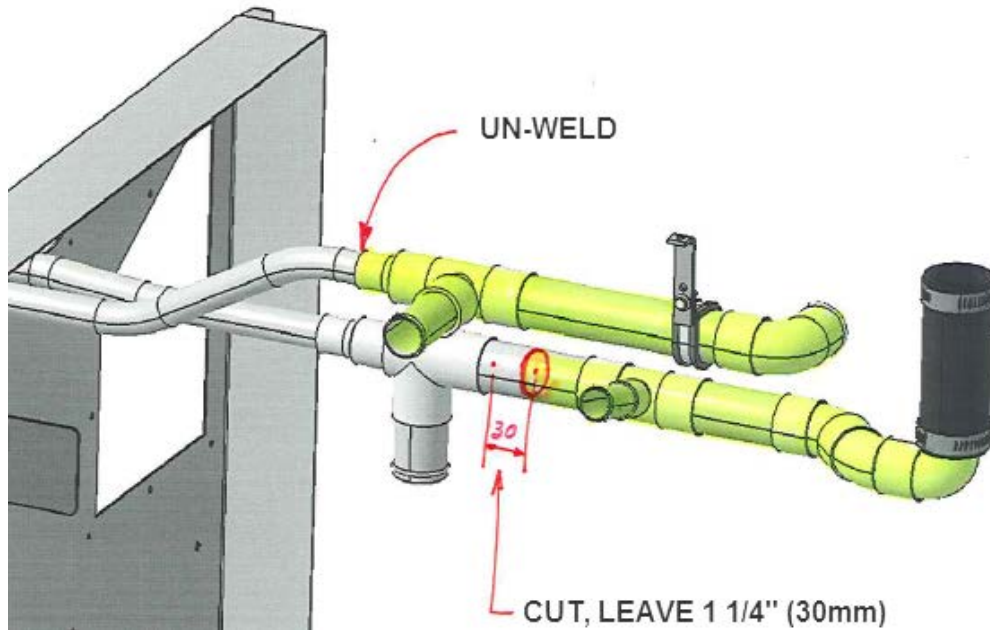


10. On the heating coil fore connection, keep collar.



11. Un-weld smaller tube. (2 people required)

12. Cut bigger tube starting with tube cutter and finishing with rotary tool. Leave 1 1/4" tube length for silicone joint. Refer to drawing below. Make sure tube is clean and free of burrs.



13. Clean thoroughly the tubes, removing any cutting residue and excess solder.



14. Install filter box with 500957 screws.



15. Seal filter box edge with 684517 Grey Simson ISR 70-03 sealant.



16. Remove electrical harness ties on the rear section.



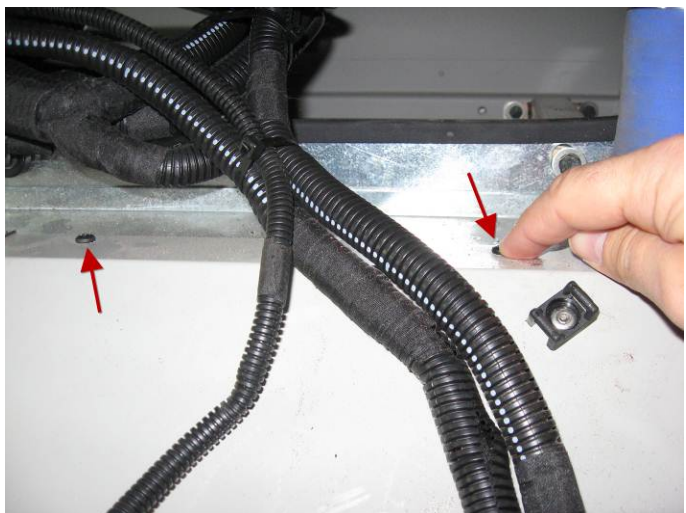
17. Free up a maximum of length for the temperature sensor cable.



18. In the rear section, remove this cable tie base.



19. Remove these two screws. Keep for re-install.



20. This A/C hose elbow on the evaporator should be oriented parallel to the evaporator.

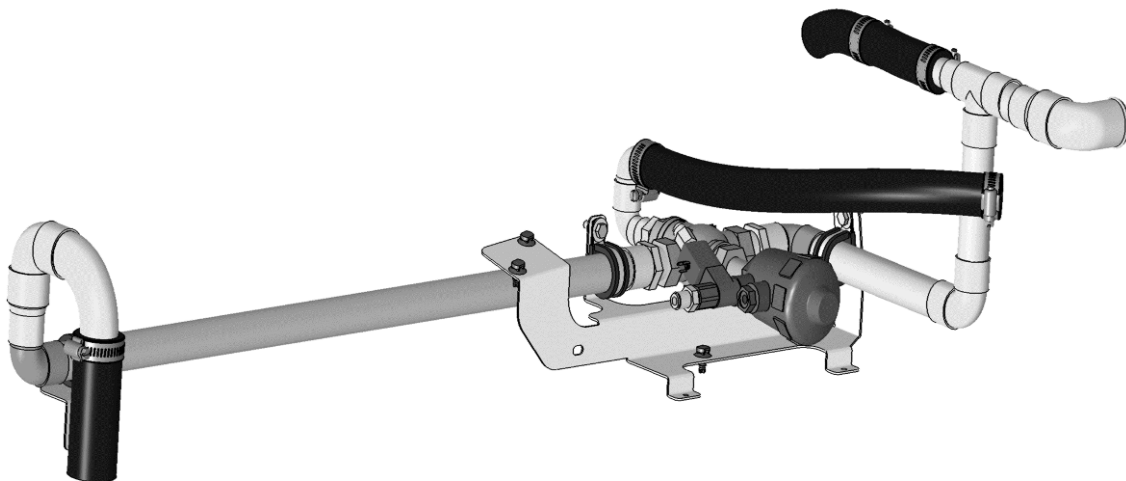
If this is not the case, slack the connection slightly to allow movement but still keeping a sealed connection and reorient the hose.



21. Remove this bolt. Keep for re-install.



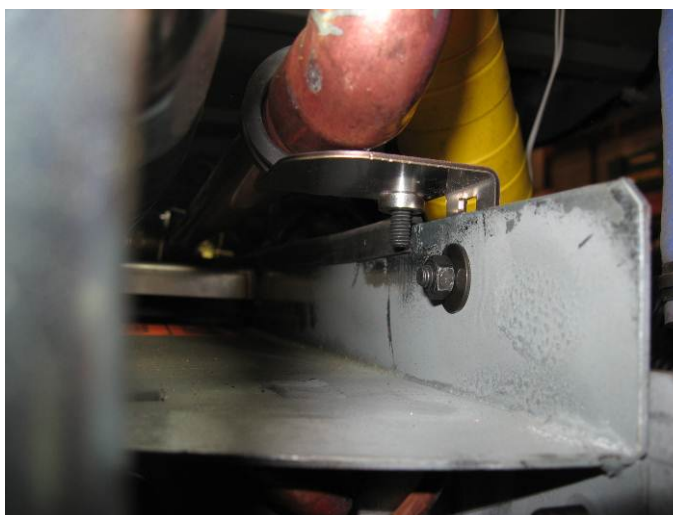
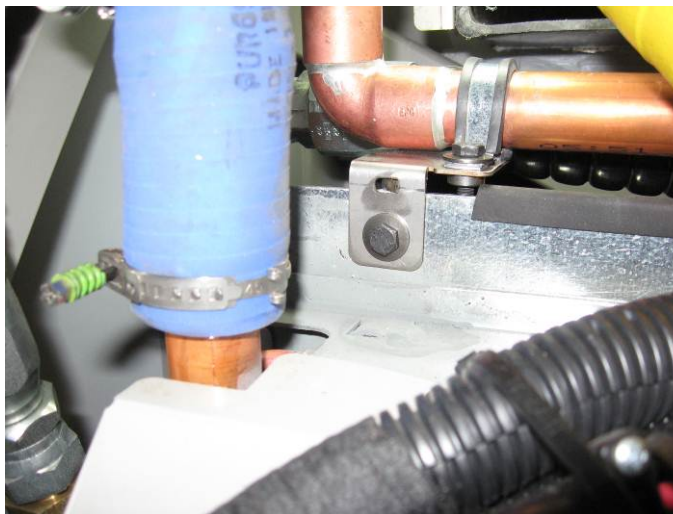
22. Slip the new central valve piping assembly 374690 under the rear section of the harness.



23. Cut rubber edge trim front section to clear new tube support.



24. Install the front tube support with:
502737 M6 bolt
5001833 Belleville washer
500411 Flat washer
502854 M6 nut
Do not tighten hardware.



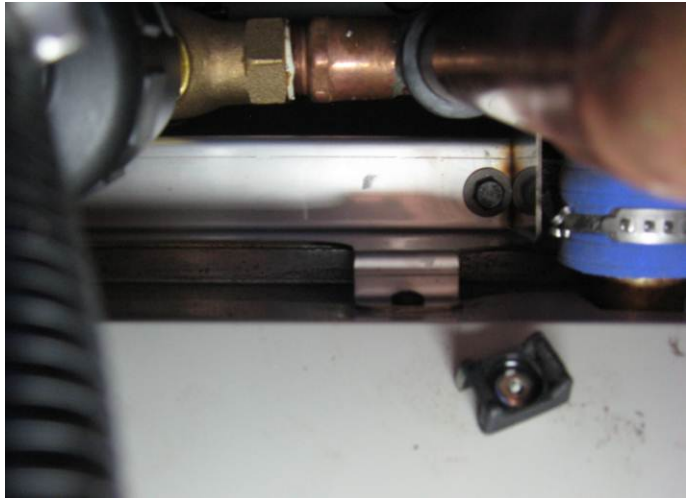
25. Install the rear bracket re-using screws previously removed.

Do not tighten hardware.



26. Install the rear bracket re-using bolts previously removed.

Do not tighten hardware.

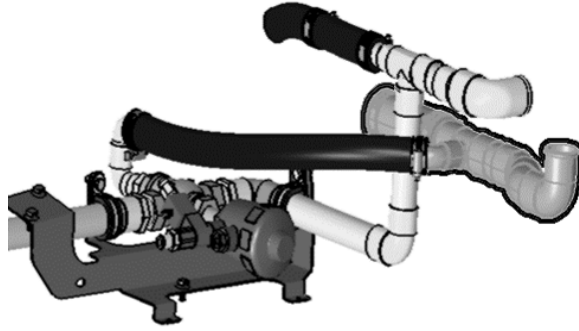


27. Install tube support and clamp previously removed to secure rear end of piping assembly.

Do not tighten.



28. Install short piping assembly 374691



29. Once the piping is connected and well fitted, tighten the mounting hardware.

30. Tighten all silicone joint connections.
Suggested clamp orientation.



31. Secure harness with cable ties.

Keep full length for the temperature sensor cable.



Install cable tie base 504428 to support white temperature sensor cable.



32. Cut to length and connect the air hoses going to the central heating valve.



33. Return removed coolant in the cooling system.

34. Open heating valves, purge and test piping water tightness.

35. Once everything is Ok, re-install air ducts with screws reserved earlier.

36. A new bracket 374685 is provided to support the front duct.

Install with:

5001744 M6 bolt, 16mm lg.

5001833 Belleville washer

502854 M6 nut

500957 Tapping screw #10

Remove burrs on the previous mounting holes and fill flush with black silicone.



37. Install flexible duct connections.



38. Connect temperature sensor



39. Install filters. Air flow arrow pointing down



PARTS / WASTE DISPOSAL

Discard waste according to applicable environmental regulations (Municipal/State[Prov.]/ Federal)