



<b>Countries:</b>		<b>Document ID:</b>	IK1200948
<b>Availability:</b>	ISIS, Bus ISIS, FleetISIS	<b>Revision:</b>	1
<b>Major System:</b>	ENGINES	<b>Created:</b>	9/20/2013
<b>Current Language:</b>	English	<b>Last Modified:</b>	10/25/2013
<b>Other Languages:</b>	NONE	<b>Author:</b>	Caleb Iverson
<b>Viewed:</b>	135		

[Less Info](#)

Hide Details

Coding Information

Copy Link	Copy Relative Link	Bookmark	Add to Favorites	Print	Provide Feedback	Helpful	Not Helpful
		 <a href="#">View My Bookmarks</a>				 6	 0

**Title: High Temperature Exhaust Gas Recirculation Cooler Housing (HT EGRC) to Mid-Plate Alignment**

**Applies To: MaxxForce® 11 and 13, EPA 10, Navistar® N13 Engine, and 2013 MaxxForce® 13 HDOBD**

**DESCRIPTION**

This procedure is to notify the Field that it is **NORMAL** to have an EGR Cooler Housing bolt hole pattern that is not directly lined up with the EGR Cooler Mid-Plate and also shows how to correct the misalignment.

**Examples:**



**Red circle is the area of concern**



Red circle is the area of concern

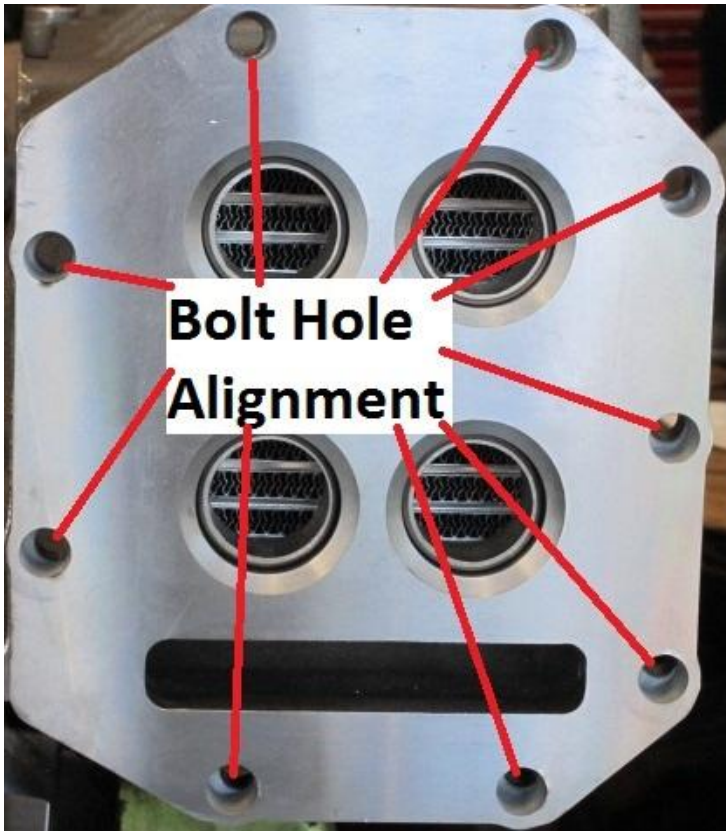
### REPAIR PROCEDURE

When receiving a new High Temp EGR Cooler assembly you may have an HT EGR Cooler that has a misaligned bolt hole pattern from the EGR Cooler Housing to EGR Cooler Mid-Plate. This is normal due to shipping and the assembly process. **DO NOT ORDER ANOTHER HT EGR COOLER.**



Red arrow is the area of concern

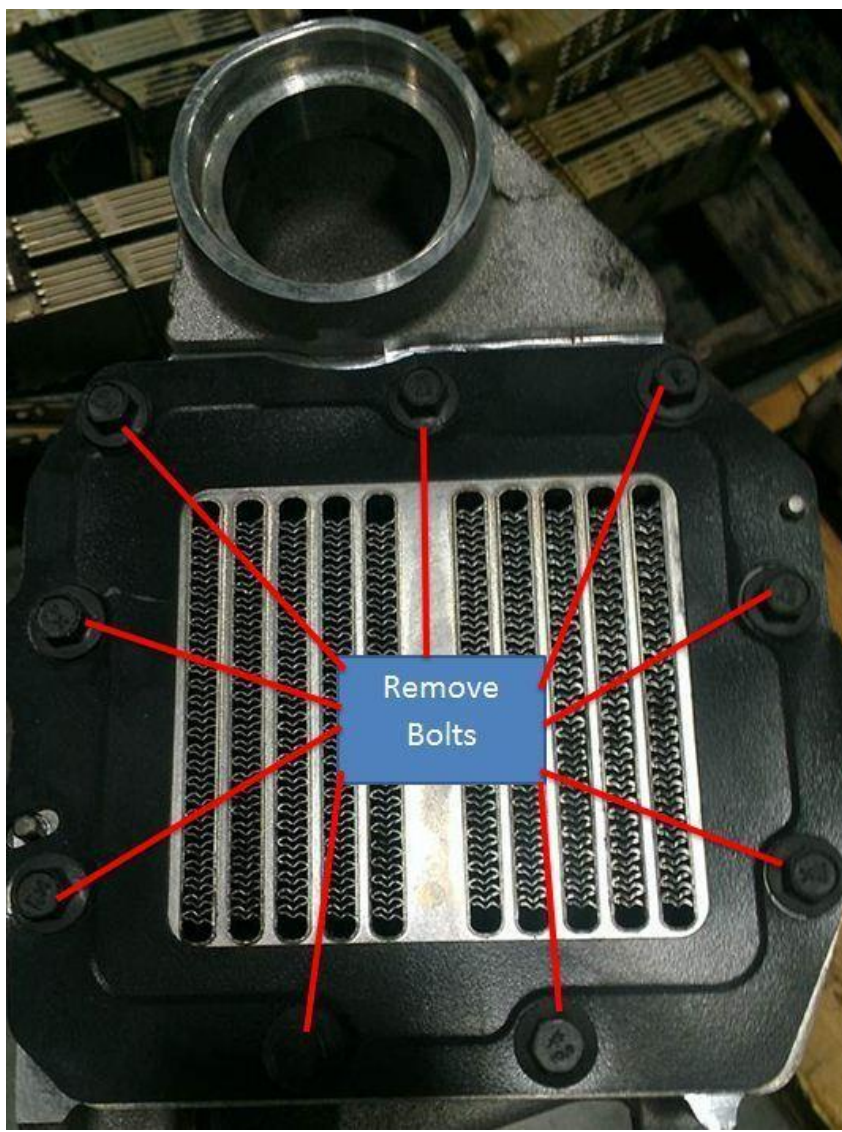




Red arrows are the area of concern

## To Re-Align:





**Red arrows are the area of concern**

1. Remove the EGR Valve shipping bolts, gasket and discard.

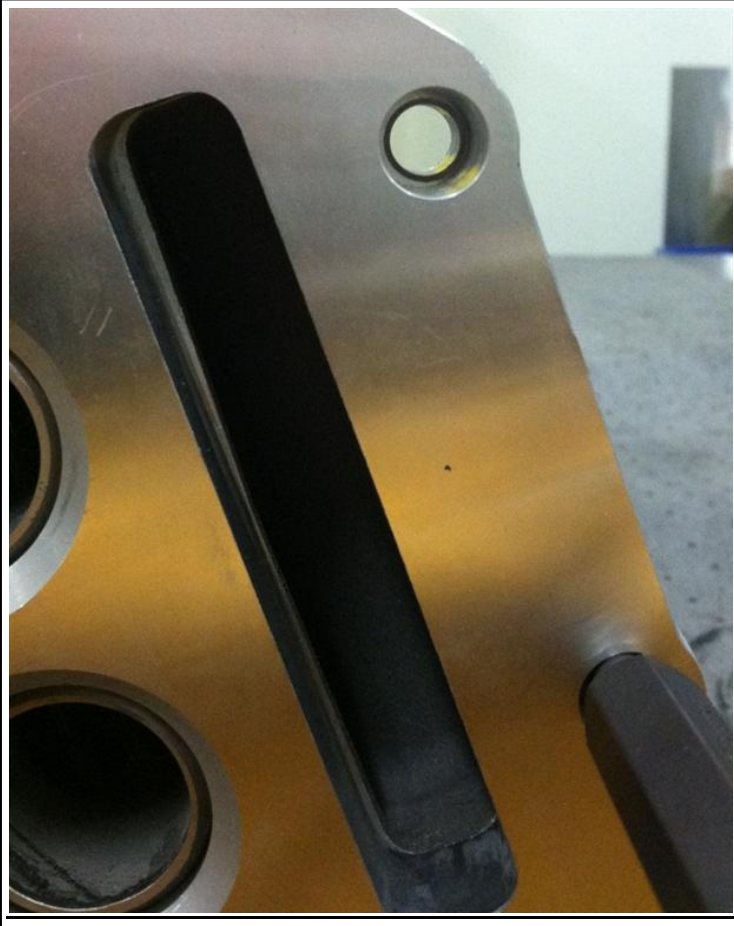




2. Insert 2 punches into opposite sides of the EGR Cooler Housing bolt holes.



3. Use punch to re-align Mid-Plate to Housing bolt hole pattern.



 Hide Details

#### Feedback Information

Viewed: 134

Helpful: 6

Not Helpful: 0

No Feedback Found

Copyright © 2013 Navistar, Inc.