



**Countries:** CANADA, UNITED STATES, MEXICO **Document ID:** IK0400028  
**Availability:** ISIS, Bus ISIS, FleetSIS **Revision:** 8  
**Major System:** PROGRAMMING SUPPORT **Created:** 11/21/2006  
**Current Language:** English **Last Modified:** 10/29/2013  
**Other Languages:** [Français](#), [Español](#). **Author:** Joe Christopher  
**Viewed:** 8185

[Less Info](#)

<input checked="" type="checkbox"/> Hide Details		Coding Information					
<b>Copy Link</b> 	<b>Copy Relative Link</b> 	<b>Bookmark</b>  <a href="#">View My Bookmarks</a>	<b>Add to Favorites</b> 	<b>Print</b> 	<b>Provide Feedback</b> 	<b>Helpful</b>  2674	<b>Not Helpful</b>  877

**Title:** How to Program Parameters After Changing a WABCO FPB ECU ( Park Brake Shows NA )

**Applies To:** All HPV with WABCO Full Power Brakes

After changing a WABCO Full Power Brakes ECU it is necessary to program the parameters into the new ECU for that VIN.

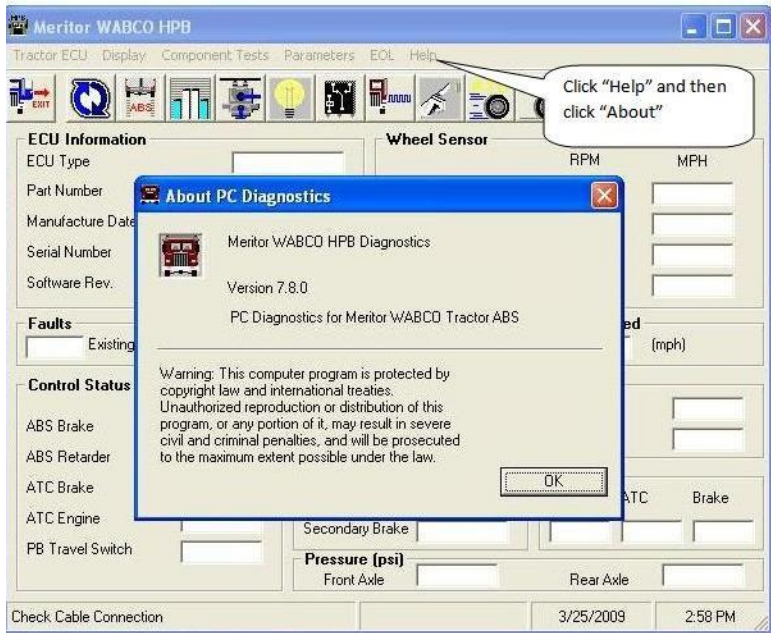
**NOTE:**

You must have WABCO Toolbox version 8.7 or later. If you do not have the latest version go to the download center and download it.

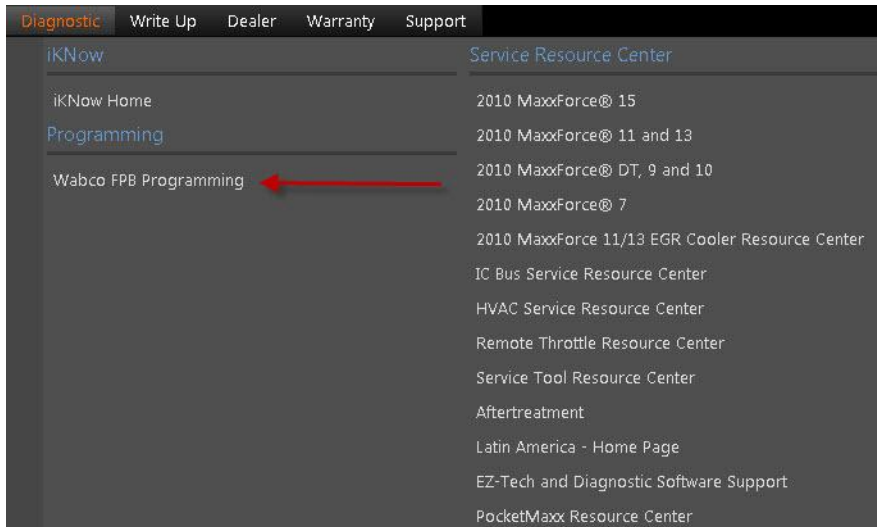
You can verify you have the latest version in two different windows in Toolbox. The first window displays when you initially open Toolbox. This must show Version 8.7 or later.



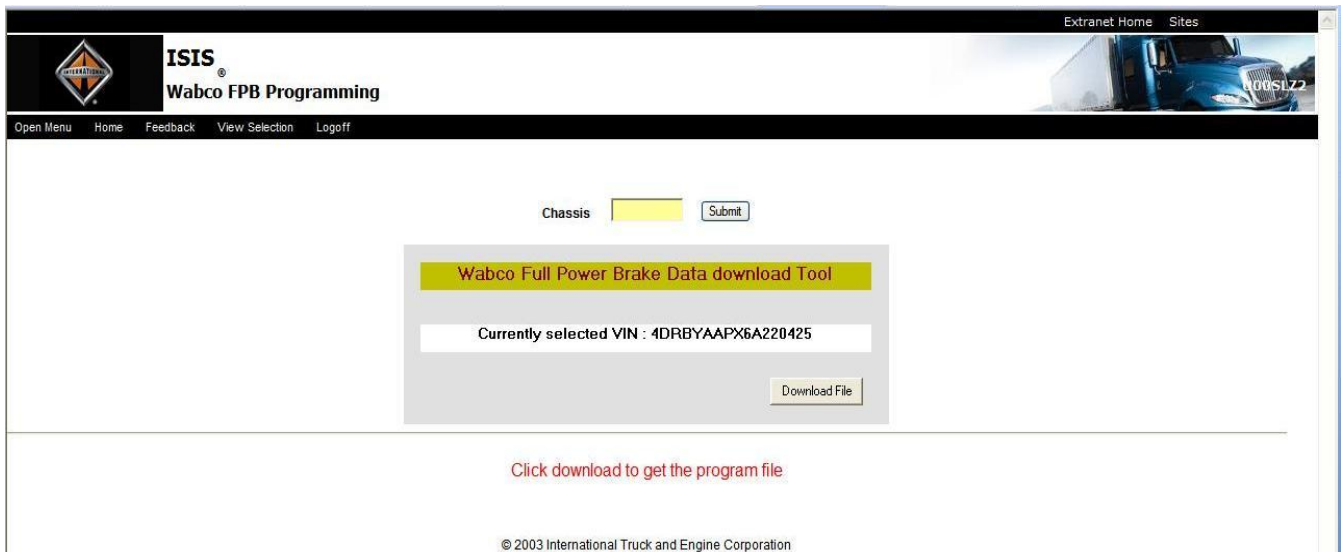
The second window is shown below. This window displays after you click on HABS in the Toolbox software. This window must show 7.8 or higher.



1. Change ECU.
2. Get onto ISIS with the EZTech that you're going to use to program the truck with.
3. From the ISIS home page, move your mouse over **Diagnostic** along the top of the screen.



4. Click on **Wabco FPB Programming**.
5. Enter your Chassis number and click **submit**.



6. Click on [Download File](#).

If you get an error message like this:



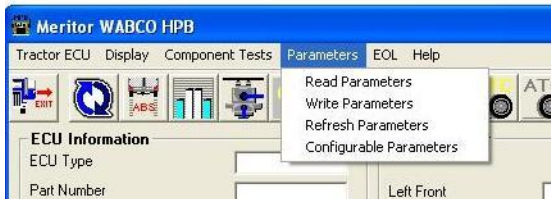
Click on the link: [Wabco Fix](#)

Download the program to your desktop and run it. You do not need admin rights to do this. Now, the problem should be resolved.

Please re-try the step 6.

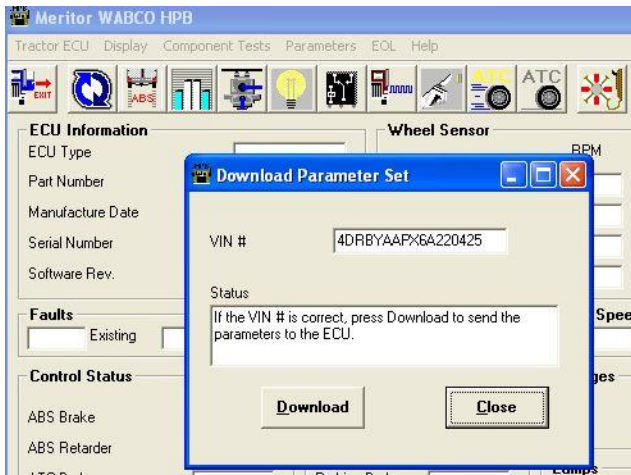
7. Hook the EZTech up to the vehicle, turn the key on and open the WABCO diagnostic software under HABS.

8. Click on [Parameters](#) in the tool bar along the top of the screen.



9. Click on [Write Parameters](#). You will see your VIN number in the box.

10. Click on the [Download](#) button.



11. After programming it is necessary to cycle the key to complete the process.



**WARNING:**

**Merritor WABCO requires pre-authorization for all repairs over \$125. For any repairs above that amount, you must contact Ontrac at 1-800-535-5560 prior to making the repair. For further information look at warranty policy letter [07-002G](#)**

[Hide Details](#) Feedback Information

	Viewed: 8184
	Helpful: 2674
	Not Helpful: 877

No Feedback Found

Copyright © 2013 Navistar, Inc.