



# Service Bulletin

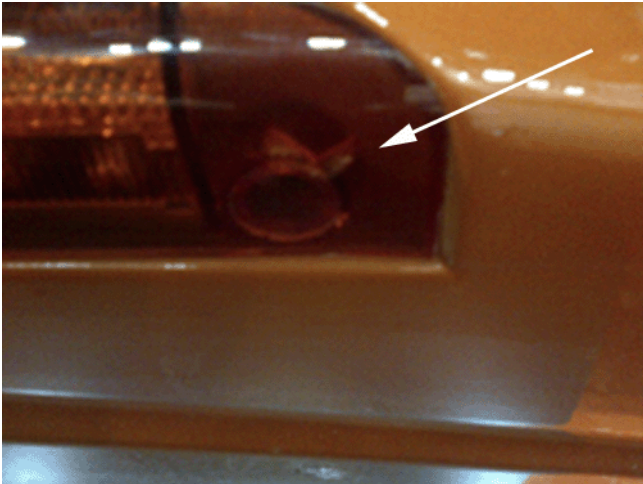
## PRELIMINARY INFORMATION

**Subject:** GM Accessory and Camaro Transformer High Wing Spoiler Center High Mount Stop Lamp (CHMSL) Cracking Around Fasteners

**Models:** 2010-2013 Chevrolet Camaro (U.S. and Canada Only)

*This PI is being revised to remove the WPC information and update the Parts Information. Please discard PI0685A.*

### Condition/Concern



Some customers may comment on the CHMSL developing cracks in the area around the fasteners.

### Recommendation/Instructions

DO NOT REPLACE THE SPOILER for this condition.

Replace the CHMSL high mount stop lamp using the following procedure:

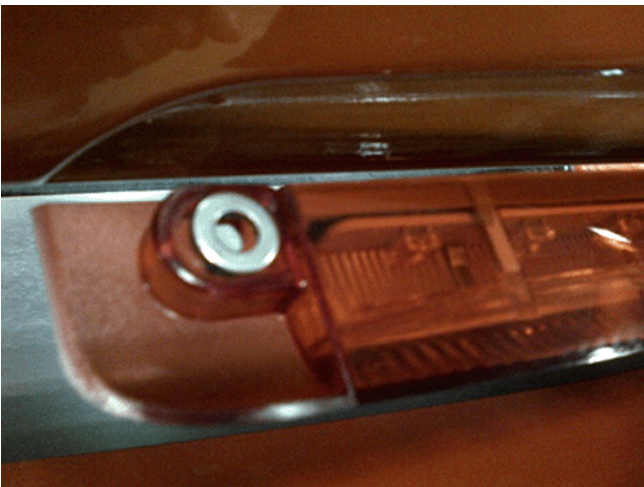
1. Use a pick to remove the caps that cover the CHMSL screws.



- Remove the screws from the CHMSL. Screws were installed with Loc-Tite. Some amount of force may be necessary to loosen the screws.



- Unplug the CHMSL from the wiring harness. Be careful the harness does not slip back into the spoiler.
- Connect the new CHMSL wiring harness.
- Install the washers on the new spoiler. We recommend using Butyl to hold the washers in place when installing the CHMSL to spoiler. Tighten to 1.85  $\gamma$  +/- 0.15.



- Install caps over the fasteners to complete the repair.

## Parts Information

Part Number	Description
-------------	-------------

92234387	Lamp Asm, High Mount Stop
----------	---------------------------

**Warranty Information**

For vehicles repaired under warranty, use:

Labor Operation	Description	Labor Time
B6812*	Replace Spoiler CHMSL	0.3 hr

\*This is a unique labor operation for bulletin use only. It will not be published in the Labor Time Guide.

GM bulletins are intended for use by professional technicians, NOT a "do-it-yourselfer". They are written to inform these technicians of conditions that may occur on some vehicles, or to provide information that could assist in the proper service of a vehicle. Properly trained technicians have the equipment, tools, safety instructions, and know-how to do a job properly and safely. If a condition is described, DO NOT assume that the bulletin applies to your vehicle, or that your vehicle will have that condition. See your GM dealer for information on whether your vehicle may benefit from the information.



WE SUPPORT VOLUNTARY TECHNICIAN CERTIFICATION