



Bulletin No.: PI1017

Date: Jul-2013

# Service Bulletin

## PRELIMINARY INFORMATION

**Subject:** Slow or Long Engine Crank, Malfunction Indicator Light On, DTC P0513 Set

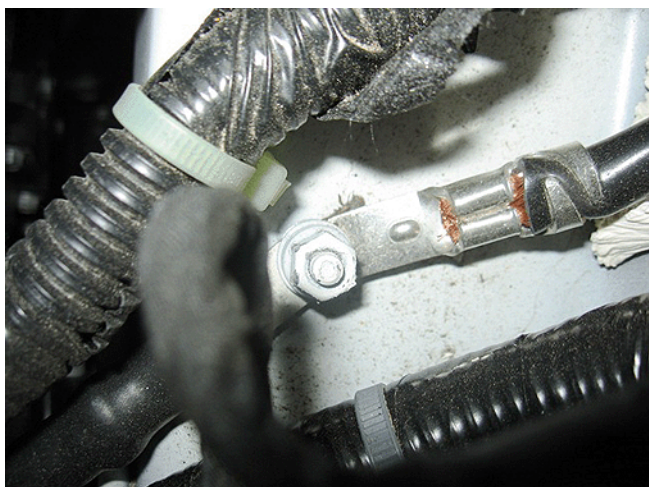
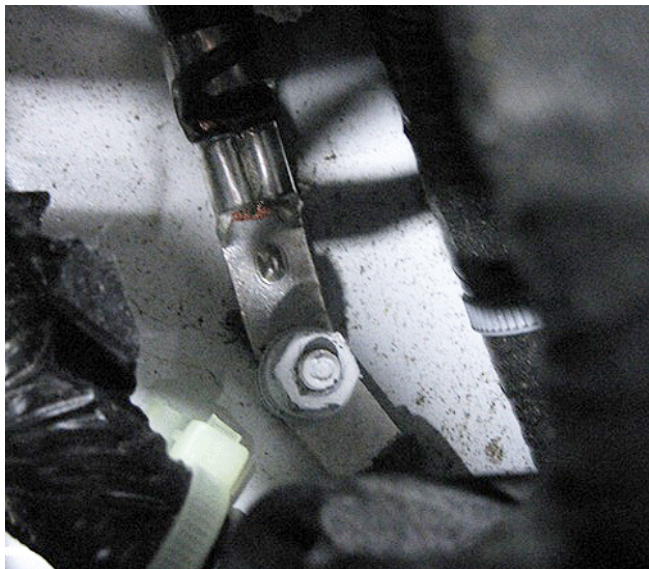
**Models:** 2013 Buick LaCrosse, Regal  
2013 Cadillac XTS  
2013 Chevrolet Malibu  
2014 Chevrolet Impala Limited  
Equipped with 2.0L (RPO LTG), 2.5L (RPO LCV), 2.5L (RPO LKW) or 3.6L (RPO LFX) Engine

### Condition/Concern

Some customers may comment that the engine cranks long or slow, the Malfunction Indicator Light (MIL) is on or the battery is dead. Technicians may find DTC P0513 set or in history and that the battery is fully charged with a slow or long crank symptom.

### Recommendation/Instructions





2014 Chevrolet Impala Limited shown, others similar

Vehicle	G103 Location
LaCrosse	In the engine compartment, below the left radiator support core, fourth from the top
Regal	In the engine compartment, on the left side, forward of the battery
XTS	In the engine compartment, left front, on frame rail
Impala	In the engine compartment, front left of center, on frame rail forward of battery
Malibu	In the engine compartment, forward of the battery

Technicians should inspect for a loose connection at G103. Clean and ensure the terminals are indexed properly so that it is fully seated on the stud prior to tightening the G103 terminal to 11.2 Y (99 lb in).

## Warranty Information

For vehicles repaired under warranty, use:

Labor Operation	Description	Labor Time
2680018*	Inspect, Clean and Torque Battery Harness Terminal	0.3 hr

\*This is a unique labor operation for bulletin use only. It will not be published in the Labor Time Guide.

GM bulletins are intended for use by professional technicians, NOT a "do-it-yourselfer". They are written to inform these technicians of conditions that may occur on some vehicles, or to provide information that could assist in the proper service of a vehicle. Properly trained technicians have the equipment, tools, safety instructions, and know-how to do a job properly and safely. If a condition is described, DO NOT assume that the bulletin applies to your vehicle, or that your vehicle will have that condition. See your GM dealer for information on whether your vehicle may benefit from the information.



WE SUPPORT VOLUNTARY TECHNICIAN CERTIFICATION