

# UPDATE Technical Bulletin



Das Auto.

February 1st, 2013

## UPDATE – 61B7 – Quality Package (NVLW)

### NOTE:

- Perform this UPDATE on all applicable vehicles within NEW VEHICLE LIMITED WARRANTY.
- It is MANDATORY to perform UPDATES on all applicable vehicles in dealer inventory PRIOR TO RETAIL SALE.
- Inform customers that this UPDATE will be available free of charge as long as their vehicle is within the Warranty parameters outlined in this UPDATE.

### NOTE:

**Required DMS Wording//Text: (line item, customer concern description on repair order):**

UPDATE 61B7 – Quality Package (NVLW)

Model(s)	Year	Engine Code	Trans. Code	From	To
Beetle Convertible	2013	All	All	3VW__AT_CM800257	3VW__AT_DM810254
Jetta Hybrid	2013	All	All	3VW63_AJ_DM200284	3VW63_AJ_DM415508
Jetta	2013	All	All	3VW__AJ_DM208433	3VW__AJ_DM415460
Jetta SportWagen / Golf Wagon	2013	All	All	3VW__AJ_DM600047	3VW__AJ_DM655619
Beetle	2013	All	All	3VW__AT_DM600001	3VW__AT_DM653274

### REVISION HISTORY

Revision	Date	Purpose
1	December 19, 2012	Original publication
2	January 18, 2013	Added VINs to CRIT 03 to reflect the new production information
3	February 1, 2013	Added models to CRIT 03; Changed work procedure and claiming instructions for CRIT 03. Added Canada to CRIT 03.

## Condition

This update has been proactively released to install the latest available quality countermeasures from production.

# UPDATE Technical Bulletin



Das Auto.

This UPDATE is in effect until removed.

Vehicle must meet all of the following criteria:

- Procedure is valid only for vehicles that show the 61B7 code in ElsaWeb, Campaign/Action Information screen on the day of repair.
- If the vehicle is sold it must be within the NEW VEHICLE LIMITED WARRANTY.
- Procedure must be performed within the allotted time frame stated in this UPDATE.
- Procedure must be performed on applicable vehicles in dealer inventory prior to sale.

## Technical Background

This document addresses up to three (3) concerns on affected vehicles as follows:

- Update software in the convertible top module to improve top function.
- Adaptation to optimize fuel gauge operation.
- Install conductive windshield washer fluid for correct sensor functionality.

## Production Solution

Quality improvements currently in production.

## Service

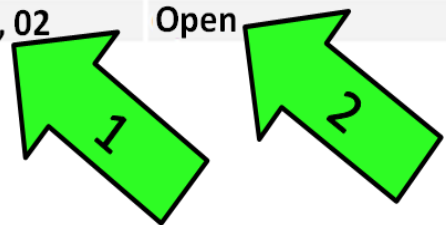
### NOTE:

- *ElsaWeb is the only valid inquiry/verification source. Check ElsaWeb on the day this vehicle UPDATE will be performed to verify vehicle eligibility for the UPDATE. Status must show "open". Attach an ElsaWeb printout showing the "open" status to the repair order.*
- *If this UPDATE appears to have already been performed but the code still shows open in ElsaWeb, contact Warranty before proceeding further. Another dealer may have recently performed this UPDATE but not yet entered a claim for it in the system.*
- *ElsaWeb may also show additional open action(s); if so, inform your customer - this work can be done while the vehicle is in for this UPDATE.*
- *Contact the Warranty Helpline (U.S.) or the Warranty Campaign Specialist (Canada) if you have any questions.*

**Work Procedure:**

**Section A – Identify Criteria and Check for Open Status**

Applicable Criteria ID (s)	Campaign/Action Status
01, 02	Open




**Tip:** On the date of repair, print this screen and keep a copy with the repair order.

- Enter the VIN in ElsaWeb and proceed to the “Campaign/Action” screen.
- ⇐ Ensure that the Status is “Open” <arrow 2>.
- ⇐ Note all Applicable Criteria ID <arrow 1> for use in determining the correct work to be done and associated parts.



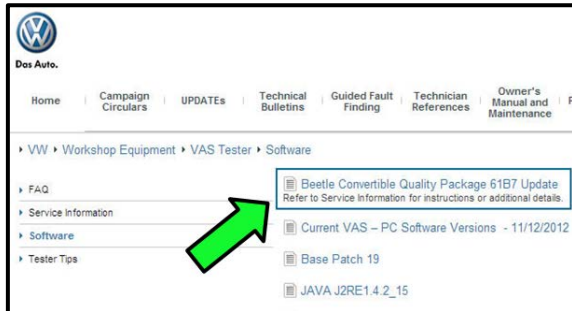
**Tip:** Vehicle may have more than one applicable Criteria. Follow the work procedure for each applicable Criteria to ensure all necessary repairs are performed.

**Continue to applicable Section(s)**

Criteria	Applicable Work Procedure Section
01	Section B
02	Section C
03	Section D



## Section B – Convertible Top Module Software



**Tip:** Perform this section only if Criteria 01 is applicable.



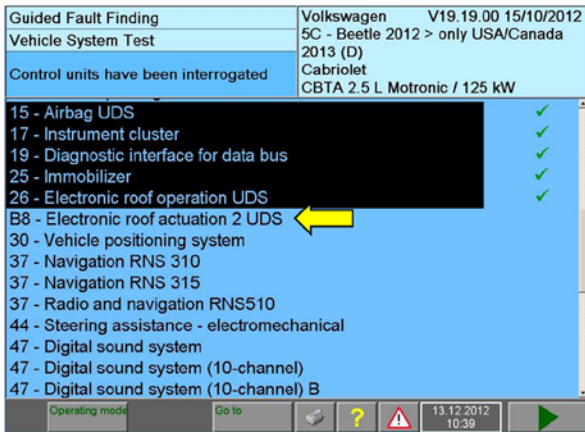
**Note:** If Utilizing VW CD Brand 19.20.00 or lower, the VAS Tester must be updated with patch files prior to beginning this software update. The files are located on Service Net >>Workshop Equipment >> VAS Tester >> Software >> “Beetle Convertible Quality Package 61B7 Update”<arrow>.

- Go to Vehicle Self Diagnosis (VSD)
- Select “26 – Electrical roof actuation”
- Select “003 – Identification”
- Select “003.01 – Identification Master”
- Select “Software version”
- Current software level of convertible top module is displayed.
- If value is “344” Work Complete for Criteria 01.
- **If value is lower than “344”** Continue Work Procedure.

# UPDATE Technical Bulletin



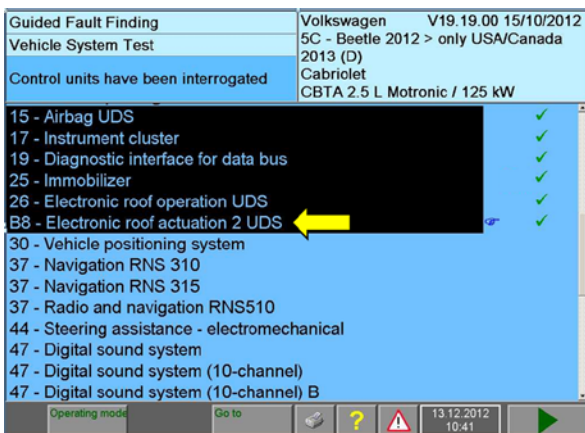
Das Auto.



- Connect battery charger/maintainer to vehicle to ensure minimum no load voltage of 12.5V to 13.5V is maintained.
  - Turn ignition on.
  - Connect VAS tester to the vehicle.
  - Enter Guided Fault Finding (GFF) and select correct vehicle information to begin control module interrogation.
- ⇐ After control module interrogation is complete, check to see if “B8 – Electronic roof actuation 2 UDS” <arrow> was interrogated.



**Tip:** On some models, address word B8 – “Electronic roof operation UDS” <arrow> may not be automatically detected during the GFF scan.



- ⇐ If necessary, manually highlight the “B8 – Electronic roof actuation 2 UDS” <arrow> as shown.
- Press the forward arrow to continue.

# UPDATE Technical Bulletin



Das Auto.

Guided Fault Finding	Volkswagen	V19.19.00 15/10/2012					
Function Test	5C - Beetle 2012 > only USA/Canada 2013 (D)						
Service42	Cabriolet CBTA 2.5 L Motronic / 125 kW						
Enter diagnostic address/measures code							
Please enter the unit code.							
1	2	3	+	A	B	C	D
				E	F	G	H
4	5	6	-	I	J	K	L
				M	N	O	P
7	8	9	.	Q	R	S	T
				U	V	W	X
C	0	Q		Y	Z		
382F							
Operating mode							
Go to							
13.12.2012 11:07							

- Select Go to
- Select Function/Component Selection
- Proceed to Software Version Management (SVM) and update both convertible top control modules using SVM code **382F**.



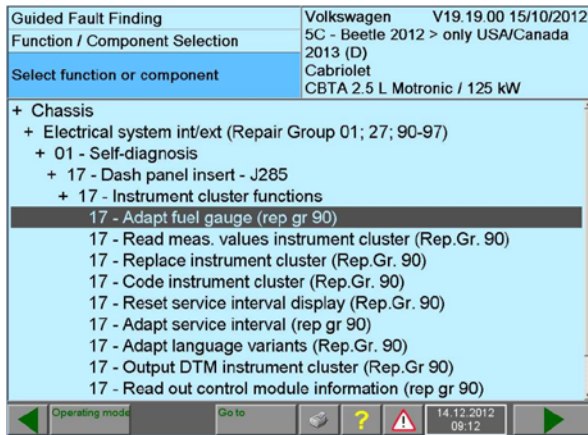
**Tip:** Both modules are updated by entering this SVM code. It is not necessary to perform two separate updates.

Guided Fault Finding	Volkswagen	V19.19.00 15/10/2012
Function Test	5C - Beetle 2012 > only USA/Canada 2013 (D)	
Service42	Cabriolet CBTA 2.5 L Motronic / 125 kW	
Current installation status		
Data version in the vehicle is current. Done		
End of test!		
Operating mode		
Go to		
12.12.2012 11:03		

- Follow the test plan until “End of test!” appears.
- Exit GFF and disconnect VAS tester and battery charger from vehicle.
- Work Complete for Criteria 01.
- **If necessary, Continue to applicable Section(s).**

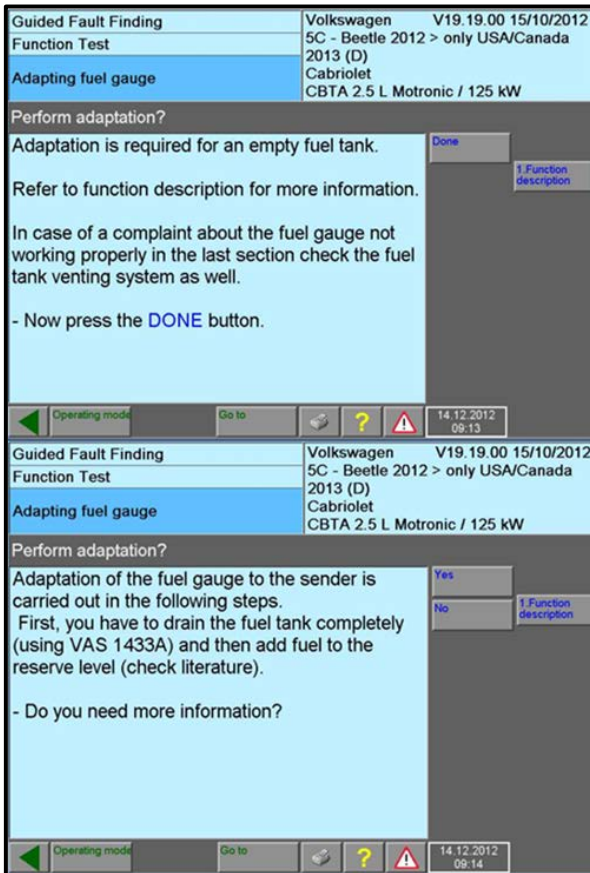


## Section C – Fuel Gauge Adaptation



**Tip:** Perform this section only if Criteria 02 is applicable.

- Connect the VAS tester to the vehicle and switch the ignition on (15 power).
- Select “Guided Fault Finding” and scan the vehicle accordingly.
- Select “Go to”
- Select “Function/component selection”.
- Select “Chassis”
- Select “Electrical Systems int/ext”
- Select “01 – Self-diagnosis”
- Select “17 – Dash Panel Insert J285”.
- Select “17 – Instrument cluster functions”.
- Select “17 – Adapt fuel gauge”



**Note:** These two screens are displayed before entering the test plan. DO NOT drain the fuel tank. Ignore these prompts and continue to the test plan. **Fuel level will not affect this adaptation procedure.**



- Begin the fuel gauge adaptation test plan and follow the on screen prompts.
- The adaptation value begins at +10° and counts down in .5° increments.
- When the value on the screen reaches -3° press the forward arrow.
- When this confirmation screen (left) is displayed the adaptation is complete.

**Tip:** If a value other than -3° is displayed here, simply restart the adaptation procedure and set the value to -3°.


- Work Procedure Complete for Criteria 02.
- **If necessary, Continue to applicable Section(s).**






## Section D – Washer Fluid

1lt of water + 20g of salt (2 tablespoons).



1 lt ← 2 tablespoons of salt per liter



1 gal ← 7 tablespoons of salt per gallon

water

Stir mixture until salt is dissolved



Tip: Perform this section only if Criteria 03 is applicable.

- ⇐ Mix salt water solution accordingly <pictured left> using standard table salt (shop supply).



- ⇐ Pour 25ml (2 tablespoons) of the salt water solution into washer fluid reservoir.



Tip: 25ml = 1/100<sup>th</sup> of a 1 liter bottle, or approximately 2 tablespoons.

- Top off reservoir with washer fluid as part of normal service (if necessary).
- Ensure low fluid level indicator lamp is not illuminated.
- Work Complete for Criteria 03.
- **If necessary, Continue to applicable Section(s).**

**WORK IS COMPLETE ONLY AFTER all applicable Criteria have been performed.**

# UPDATE Technical Bulletin



Das Auto.

## Warranty

<b>Claim Entry Procedure</b>	Enter your claim immediately upon completion of the UPDATE. Claims will only be paid for vehicles that show this UPDATE code open in ElsaWeb on the day of repair. To help ensure prompt and proper payment, attach the screen print to the repair order.
<b>Claim Help</b>	<b><u>U.S. dealers</u></b> - Contact the <b>Warranty Helpline</b> toll-free at 1-866-306-8447 for help with claim entry. <b><u>Canadian dealers</u></b> - Contact your Warranty Campaign Specialist. For contact information, please proceed to "ServiceNet – Warranty/Contact Information/Campaigns – "Warranty Campaign Specialist."
<b>Required Customer Notification</b>	Ensure customers are aware of all work performed on the vehicle by recording the information on the repair order. Attach a copy of the <i>Vehicle UPDATE Fact Sheet</i> to the customer's copy of the repair order and take the time to explain this UPDATE to your customer.

# UPDATE Technical Bulletin



Das Auto.

## SAGA Code 61B7 Claim Entry Procedure

Check ElsaWeb to confirm that this UPDATE code is open on the day of repair.

Service No.: 61B7

Damage Code: 0099

Parts Manufacturer/Vendor Code: 3ME

### Claim Type

Sold vehicle = 7 10

Unsold vehicle = 7 90

### Accounting Instructions:

#### -- If Applicable --

Criteria I.D. 01

Check/UPDATE present. No further work required.

Repair operation: 0183 00 99 10 TU

-- OR --

Check/UPDATE not present. Install new software.

Repair operation: 6196 25 99 50 TU

#### -- AND/OR If Applicable --

Criteria I.D. 02

Adapt fuel gauge.

Repair operation: 9025 25 99 30 TU

#### -- AND/OR If Applicable--

Criteria I.D. 03

Install salt solution into washer fluid reservoir.

Repair operation: 9258 19 99 20 TU

*There is NO reimbursement for wash or loaner vehicle!*

**Vehicles may have more than one criterion. Complete and claim ALL applicable criteria on one claim.**

**If vehicle is not eligible for repair under this UPDATE (i.e.: totaled status) OR if customer refused repairs.**

Fax the Repair Order to VWoA at (248) 754-5093 and provide VIN, applicable Service Number, Customer Information, Dealer Number and Date



## Required Parts and Tools

Tool Description	Tool No:	Quantity
VAS Tester	VAS 6150A (or equivalent)	1

## Additional Information

All part and service references provided in this Technical Bulletin are subject to change and/or removal. Always check with your Parts Dept. and Repair Manuals for the latest information.

# UPDATE Technical Bulletin

---



Das Auto.

## UPDATE FACT SHEET – UPDATE Code 61B7

Dear Volkswagen Customer,

Today we performed UPDATE code 61B7 on your vehicle. This UPDATE ensures that the latest available quality solutions were installed. This UPDATE was performed for you free of charge.

Volkswagen periodically makes updates like this available in order to ensure our customer's continued satisfaction with the quality of their Volkswagen vehicles.

We at Volkswagen are committed to providing our customers with reliable, quality products that are a pleasure to drive and own. If you should ever have any questions or vehicle concerns, your authorized Volkswagen dealer will be pleased to assist you.

Thank you for driving a Volkswagen!