



Technical Bulletin

Model(s)	Year(s)	Eng. Code(s)	Trans. Code(s)	VIN Range From	VIN Range To
Passat	2012-2013	2.5L	All	A3_CC040904	A3_CD999999
Beetle	2012-2013	2.5L-2.0T	All	AT_CM621164	AT_DM999999
Jetta	2012-2013	2.5L-2.0T	All	AJ_CM362729	AJ_CD999999

Condition

01 13 05 February 21, 2013 2031341 Supersedes T.B. V011233 dated December 4, 2012 to correct labor operation in warranty table.

DTC P0441 Stored in the Engine Control Module

DTC	Description
P0441	EVAP Emission Control System Incorrect Purge Flow

Technical Background

Production tolerance in Diagnostic Module Tank Leakage (DMTL) pump could cause a false flow reading.

Production Solution

Updated DMTL pumps as of pumps' production date September 2012. (Pumps marked with a dot (color may vary blue, green, white and yellow), implementation dates from plants unavailable at this time).

Technical Bulletin



Note:

Dot color may vary blue, green, white and yellow.

Technical Bulletin

Service



Note:

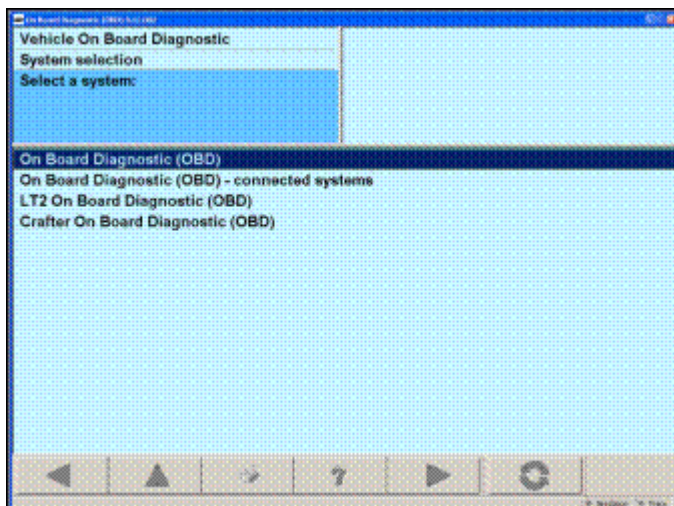
A completed DMTL function test is required for reimbursement.

Perform the following steps to test the DMTL system.

- Start Engine.
- Connect VAS-Tester to vehicle.

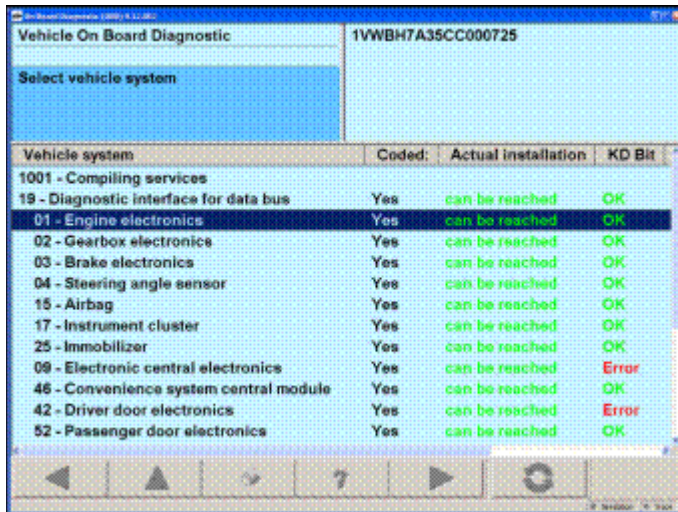


- Start "Vehicle Self-Diagnosis".

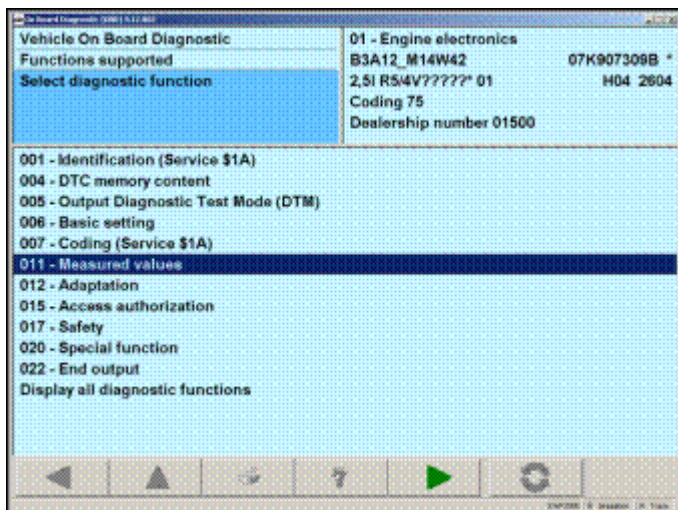


- Open "On Board Diagnostic (OBD)".

Technical Bulletin

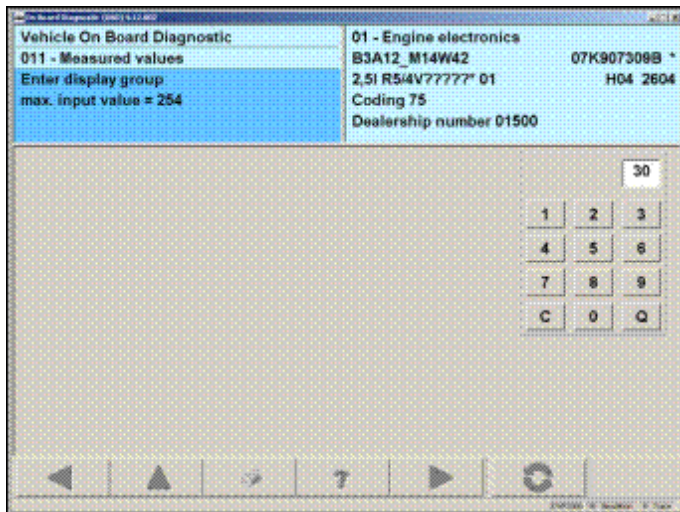


- Start Diagnostic session with “01 Engine Electronics”.

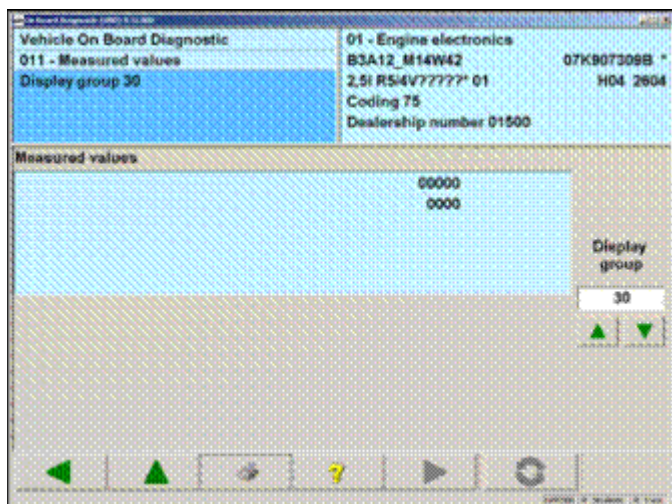


- Select “011 Measurement Values”.

Technical Bulletin

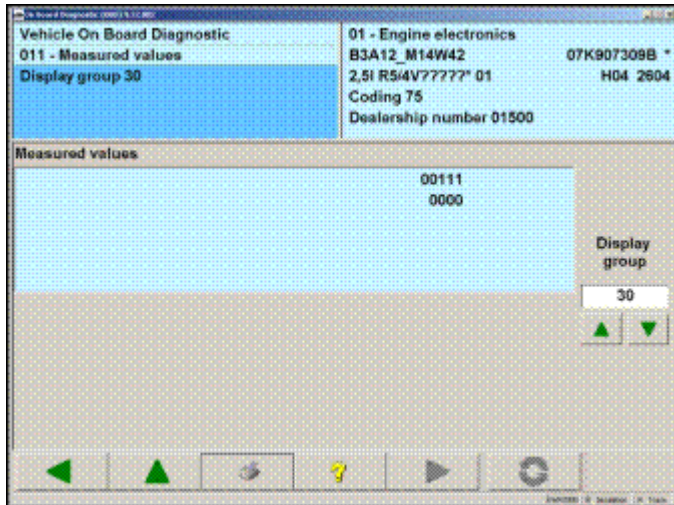


- Select “MVB 30”.

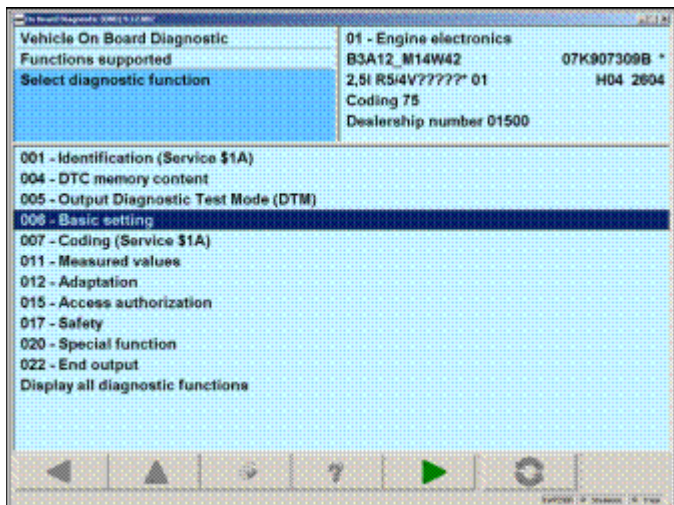


- Make sure the second “0” from the right in row one changes to “1”.

Technical Bulletin

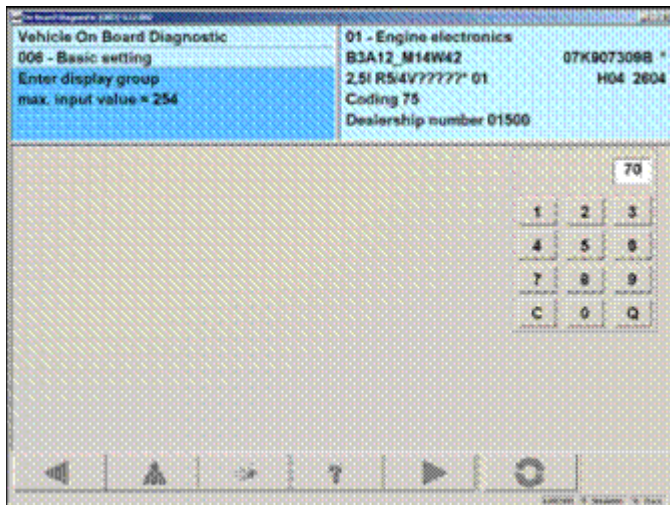


- If the bit changed to “1” or is already “1” exit MVB.

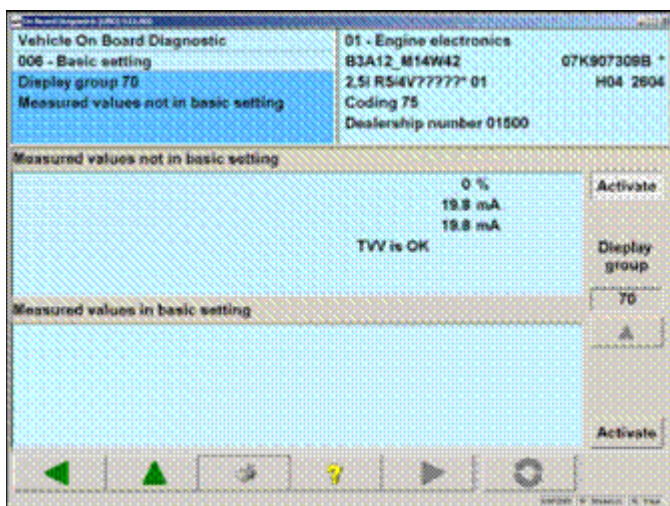


- Enter “006 Basic Settings”.

Technical Bulletin

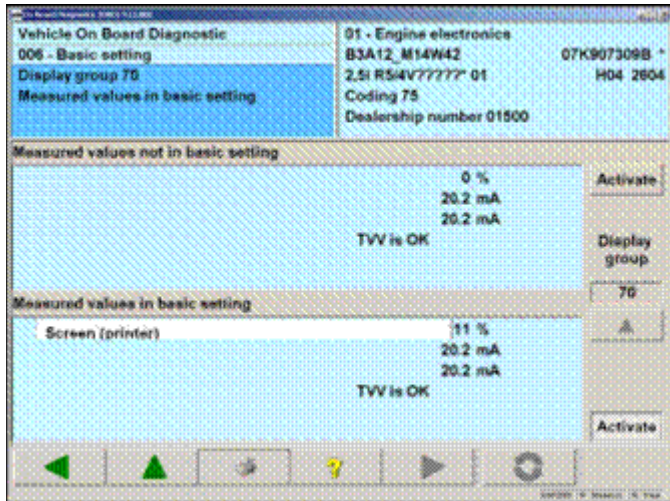


- Select "Basic Settings 70".



- Select "Activate".

Technical Bulletin



- Check maximum value in row one (lower window).



Tip

No engine restarts necessary!

If maximum value is less than 70%, DMTL is OK, replace the Purge Valve.

If maximum value is greater than 70%, DMTL is not OK and needs to be replaced.

If maximum value is close to 70%, rerun the test 2 more times to get a more accurate reading.



Note:

If percentage value is in question, please contact the Volkswagen Technician Helpline for further instructions.



Note:

When replacing the DMTL, ONLY replace the pump and not the whole assembly. Claims with DMTL assemblies will be subject to warranty review and potential debit.



Technical Bulletin

Warranty

Purge Valve Replacement

To determine if this procedure is covered under Warranty, always refer to the Warranty Policies and Procedures Manual ¹⁾					
Model(s)	Year(s)	Eng. Code(s)	Trans. Code(s)	VIN Range From	VIN Range To
Passat	2012-2013	2.5L	All	A3_CC040904	A3_CD999999
Beetle	2012-2013	2.5L-2.0T	All	AT_CM621164	AT_DM999999
Jetta	2012-2013	2.5L-2.0T	All	AJ_CM362729	AJ_CD999999
SAGA Coding					
Claim Type:		Use applicable Claim Type ¹⁾			
Service Number:	Damage Code	HST		Damage Location (Depends on Service No.)	
2024	0010	--		Use applicable when indicated in ElsaWeb (L/R)	
Parts Manufacturer	Passat, Beetle, Jetta 2.0T			CFW ²⁾	
	Passat, Beetle, Jetta 2.5L			BOG ²⁾	
Passat 2.5L					
Labor Operation ³⁾ : Remove and Install Engine Cover			24251917 = 30 TU		
Labor Operation ³⁾ : Remove and Install Purge Valve:			20241967 = 10 TU		
Beetle 2.5L					
Labor Operation ³⁾ : Remove and Install Engine Cover			24251917 = 30 TU		
Labor Operation ³⁾ : Remove and Install Purge Valve:			20241967 = 10 TU		



Technical Bulletin

Beetle 2.0T		
Labor Operation ³⁾ : Remove and Install Engine Cover/Intake Manifold	24471918 = 250 TU	
Labor Operation ³⁾ : Remove and Install Purge Valve:	20241968 = 10 TU	
Jetta 2.5L		
Labor Operation ³⁾ : Remove and Install Engine Cover	24251917 = 30 TU	
Labor Operation ³⁾ : Remove and Install Purge Valve:	20241967 = 10 TU	
Jetta 2.0T		
Labor Operation ³⁾ : Remove and Install Engine Cover/Intake Manifold	24471918 = 250 TU	
Labor Operation ³⁾ : Remove and Install Purge Valve:	20241968 = 10 TU	
Causal Part: Purge Valve -N80-		06J 133 781 * 2.0T 06E 906 517 * 2.5L
Diagnostic Time ⁴⁾		
GFF Time expenditure	01500000 = 20 TU max.	YES
Road Test	01210002, 01210004	NO
Technical Diagnosis	01320000 = 10 TU max.	YES
Claim Comment: Input "As per Technical Bulletin 2031341" in comment section of Warranty Claim.		
<p>¹⁾ Vehicle may be outside any Warranty in which case this Technical Bulletin is informational only</p> <p style="padding-left: 40px;">²⁾ Code per warranty vendor code policy.</p> <p style="padding-left: 40px;">³⁾ Labor Time Units (TUs) are subject to change with ELSA updates.</p> <p style="padding-left: 40px;">⁴⁾ Documentation required per Warranty Policy Procedures Manual.</p>		



Technical Bulletin

Leak Detection Pump (DMTL) Replacement



Note:

When replacing the DMTL, ONLY replace the pump and not the whole assembly. Claims with DMTL assemblies will be subject to warranty review and potential debit.

To determine if this procedure is covered under Warranty, always refer to the Warranty Policies and Procedures Manual ¹⁾					
Model(s)	Year(s)	Eng. Code(s)	Trans. Code(s)	VIN Range From	VIN Range To
Passat	2012-2013	2.5L	All	A3_CC040904	A3_CD999999
Beetle	2012-2013	2.5L-2.0T	All	AT_CM621164	AT_DM999999
Jetta	2012-2013	2.5L-2.0T	All	AJ_CM362729	AJ_CD999999
SAGA Coding					
Claim Type:		Use applicable Claim Type ¹⁾			
Service Number:		Damage Code	HST	Damage Location (Depends on Service No.)	
2048		0010	--	Use applicable when indicated in ElsaWeb (L/R)	
Parts Manufacturer		Passat, Jetta, Beetle			BVD ²⁾
Passat 2.5L					
Labor Operation ³⁾: Remove and Install Wheel			44051900 = 20 TU		
Labor Operation ³⁾: Remove and Install Wheel Liner			66761950 = 20 TU		
Labor Operation ³⁾: Remove and Install Leak Detection Pump			20481950 = 10 TU		
Beetle 2.5L/2.0T					
Labor Operation ³⁾: Remove and Install Leak Detection Pump			20481900 = 90 TU		
Jetta 2.5L/2.0T					
Labor Operation ³⁾: Remove and Install Wheel			44051900 = 20 TU		



Technical Bulletin

Labor Operation ³⁾ : Remove and Install Wheel Liner	66761950 = 20 TU	
Labor Operation ³⁾ : Remove and Install Leak Detection Pump	20481950 = 10 TU	
Causal Part: Diagnostic Module Tank Leakage (DMTL) pump	7L0 906 243 *	
Diagnostic Time ⁴⁾		
GFF Time expenditure	01500000 = 20 TU max.	YES
Road Test	01210002, 01210004	NO
Technical Diagnosis	01320000 = 10 TU	YES
Claim Comment: Input "As per Technical Bulletin 2031341" in comment section of Warranty Claim.		
<p>¹⁾ Vehicle may be outside any Warranty in which case this Technical Bulletin is informational only</p> <p>²⁾ Code per warranty vendor code policy.</p> <p>³⁾ Labor Time Units (TUs) are subject to change with ELSA updates.</p> <p>⁴⁾ Documentation required per Warranty Policy Procedures Manual.</p>		

Required Parts and Tools

Part Description	Part No:	Quantity
DMTL	7L0 906 243*	1
N80	06J 133 781* 2.0T 06E 906 517* 2.5L	1

Tool Description	Tool No:
Midtronics Battery Tester/Charger	InCharge 940 (INC-940)
VAS Diagnostic Tool	VAS-PC, 5051B, 5052A, 6150X (Base CD V19.01.00 and Brand DVD V19.19.00 or higher)



Technical Bulletin

Additional Information

All part and service references provided in this Technical Bulletin are subject to change and/or removal. Always check with your Parts Dept. and Repair Manuals for the latest information.