



Audi side assist update

Contents: Technical actions

No.	Event	Topic	Type/model
1		Latest information about Audi side assist	All

=> Several TSBs have been released recently addressing potential customer concerns – it is imperative to follow the TSB related to the specific customer concern!

Audi side assist

System sporadically inoperative

- ▶ Side assist deactivates itself after the engine starts (*A4 PI, A5 PI, Q5 PI*)
 - ▶ DTC for “Lane change assistance control module 2 Function limitation due to insufficient voltage” stored in the side assist control unit (diagnosis address 3C)
 - ▶ Update software as per TSB **2031095**

- ▶ Side assist inoperative (*A6, A7, A8*)
 - ▶ DTC for “Lane Change Assistance Warning Lamp -K233- / -K234- Open/Short Circuit to B+” stored in the side assist control unit (diagnosis address 3C)
 - ▶ Update software as per TSB **2034000**

Audi side assist

System sporadically inoperative

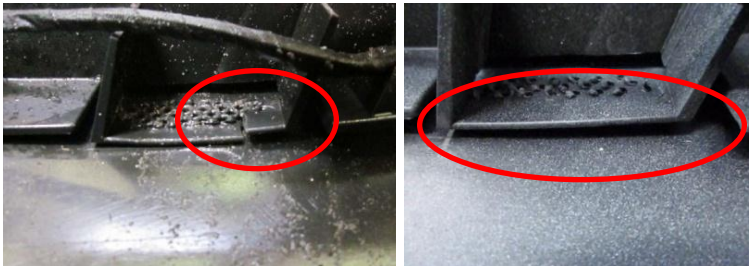
- ▶ Side assist inoperative with “Sensors blocked” warning (*A4 PI, A5 PI*)
 - ▶ DTC for “Lane change assistance control module Restricted view” stored in the side assist control unit (diagnosis address 3C)
 - ▶ Follow instructions in PSS TSB **2033943**

- ▶ Side assist inoperative (*A4 PI, A5 PI, Q5 PI, A6, A7*)
 - ▶ DTC for “Lane Change Assistant Control Module -J769 No signal/communication” or “Data-Bus distance regulation No signal/communication” stored in the gateway (diagnosis address 19) and/or DTC for “Local data bus Faulty,, stored in the lane change assist (diagnosis address 3C)
 - ▶ Replace control unit(s) as per TSB **2032225**

Audi side assist

False warnings

- ▶ False warnings from Audi side assist ([A6](#), [A7](#))
 - ▶ Update software as per TSB **2028809**
- ▶ False warnings from Audi side assist ([A4 PI](#), [A5 PI](#))
 - ▶ Cause:
 - ▶ Vibrations as a result of broken/loose parts inside the bumper (A4 PI, A5 PI)



- ▶ Faulty radar reflections caused by wheels/tires (allroad only)
 - ▶ Follow instructions in TSB **2030583** (A4, A5) or TSB **2033782** (allroad)