

**VAS Tester**

**Number: AVT-13-15**

**Subject: VAS 5054A Transmitter Head – USB Configuration &  
Function - ODIS Service Only**

**Date: August 27, 2013**

## 1.0 – Introduction

If a VAS diagnostic tablet or laptop device is used to perform Software Version Management (SVM) or immobilizer adaptation, it is necessary to connect a USB cable between the tablet or laptop and their Bluetooth (wireless) matched VAS 5054A Transmitter Head. This ensures uninterrupted data transfer.

Use the following procedure to install and configure a VAS 5054A transmitter head for USB (cabled) operation on a VAS diagnostic laptop or tablet with **ODIS Service ONLY ...i.e.: VAS-PC not installed or previously uninstalled.**

**We suggest printing this document for use during configuration.**

### **ATTENTION!**

Attempting to use the USB cable without **first performing the initial USB configuration** may cause the tablet or laptop operating system to “lock up”, which requires a forced, manual restart and loss of the session diagnostic log.

## 2.0 – Preparation

### *Prerequisites*

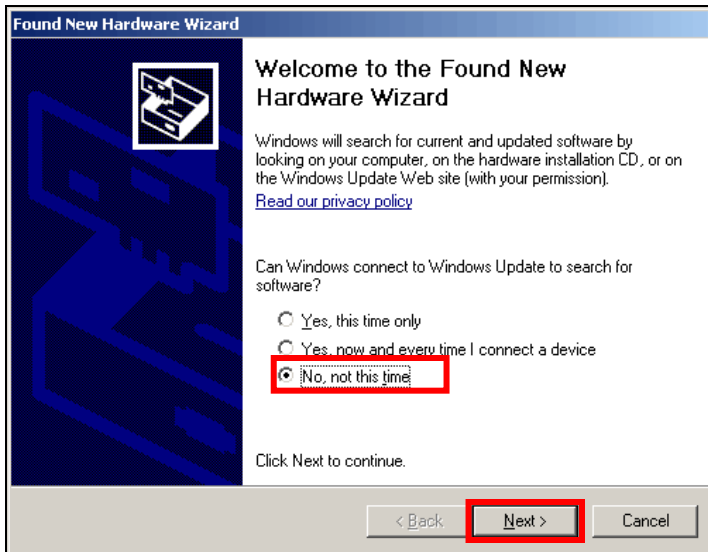
- VAS diagnostic tablet or laptop connected to power adapter and booted to Windows desktop.
- Wireless switch** in the **OFF** position (where applicable).
- VAS-PC not installed or previously uninstalled.**
- ODIS Service V2.0.0 or higher installed.**
- ODIS Service not running during configuration.
- VAS 5054A previously configured for Bluetooth (wireless) operation.
- VAS 5054A **disconnected** from vehicle Data Link Connector (DLC).
- VAS diagnostic tester tablets: On-screen keyboard activated for number entry and USB mouse connected for easier navigation.
- Vehicle available.

## 3.0 – USB Configuration

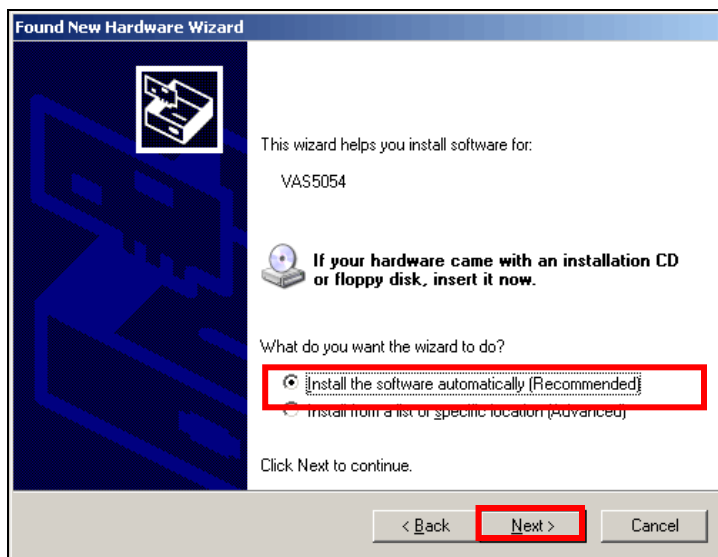
1. Connect the VAS 5054A to a vehicle DLC to establish power supply.
2. Connect the USB cable between the VAS 5054A and a free USB port on the tablet or laptop.

Continued ...2/

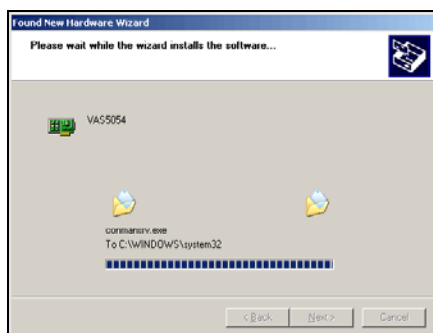
- When the **Found New Hardware Wizard** starts, select **No, not this time**, then **Next**. If the wizard does **not** start, the USB configuration has already been performed. No further action is necessary.



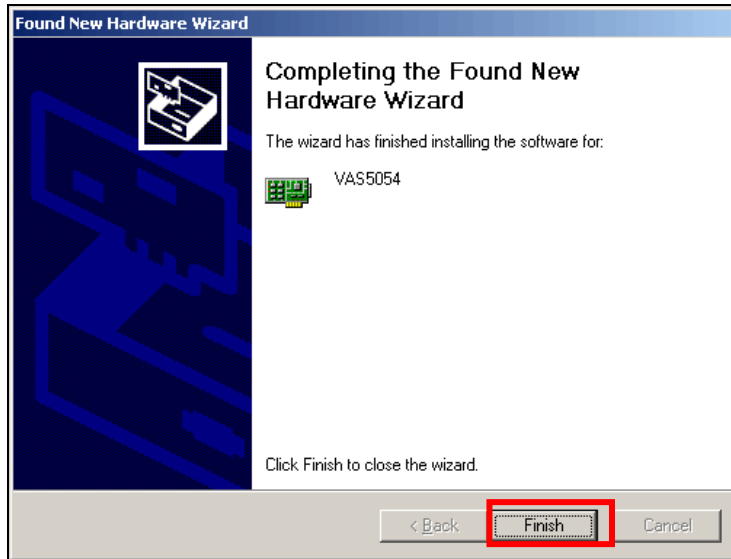
- Select **Install the software automatically (Recommended)**, then **Next**.



- Wait while the wizard locates and installs the software:



6. Click **Finish** to complete the installation and close the installation window.



## 4.0 – USB Function

**Before** performing SVM or adaptation with ODIS Service in USB (cabled) mode, we recommend the following:

1. Move the wireless switch to the **OFF** position (where applicable).
2. Connect a **network Ethernet cable** to tablet or laptop (We do not recommend performing SVM or adaptation on a wireless network).
3. Connect the VAS 5054A to the vehicle DLC to establish power supply.
4. Connect USB cable between the VAS 5054A and a free USB port on the tablet or laptop.
5. Start ODIS Service and commence with SVM or adaptation.

If Bluetooth (wireless) operation is desired after completion of the SVM or adaptation procedure, disconnect the USB cable between the transmitter head and diagnostic device, and move the wireless switch to the **ON** position (where applicable).