

# Technical Service Bulletin



## 35 0B5 7 Speed S-tronic, leaks from transmission

35 13 12 2028085/4 June 18, 2013. Supersedes Technical Service Bulletin Group 35 number 13-09 dated April 1, 2013 for reasons listed below.

Model(s)	Year	VIN Range	Vehicle-Specific Equipment
S4	2010-13	All	0B5 S-Tronic transmission
S5 Cab	2010-13		
S5 coupe	2013		
RS5	2013		
S6	2013		
S7	2013		

## Condition

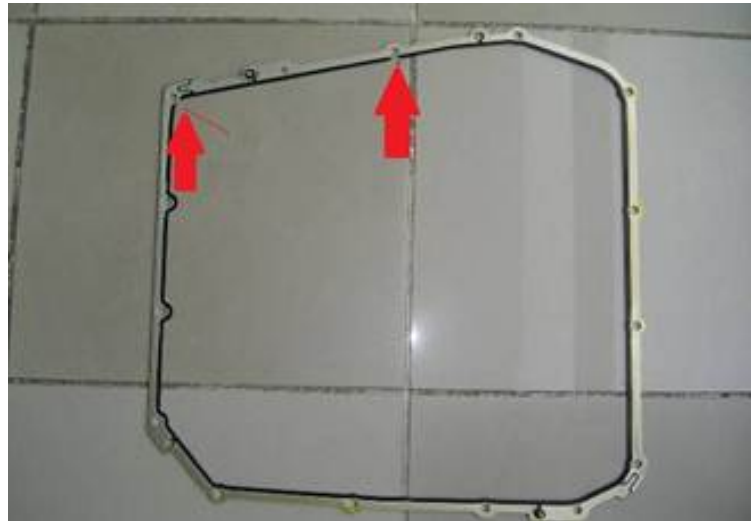
REVISION HISTORY		
Revision	Date	Purpose
4	-	Revised header data (Updated customer codes)
3	4/1/2013	Revised <i>Service</i> (Added illustration, clarified steps) Revised header data (Added models and model years) Revised <i>Warranty</i> (Removed incorrect information)
2	3/26/2013	Revised <i>Service</i> (Added case leak repair procedure) Revised <i>Warranty</i> (Added labor for case leak repair) Revised <i>Required Parts and Tools</i> (Added parts for case leak repair)
1	11/30/2011	Original publication

Customer may report that there is oil leaking under the vehicle.

## Technical Background

There are a number of possible sources for the leak, including:

- Leaking from the oil pan seal (Figure 1).



*Figure 1. Leak on the oil pan seal (red arrows).*

- Crack in the oil pan (Figure 2).



*Figure 2. Crack in the oil pan.*

- Leak between gearbox housing and intermediate housing (Figure 3).



**Tip:** The source of the leak may be confused with o-ring of drain plug.



**Figure 3.** Leak between gearbox housing and intermediate housing.

## Production Solution

Not applicable.

## Service

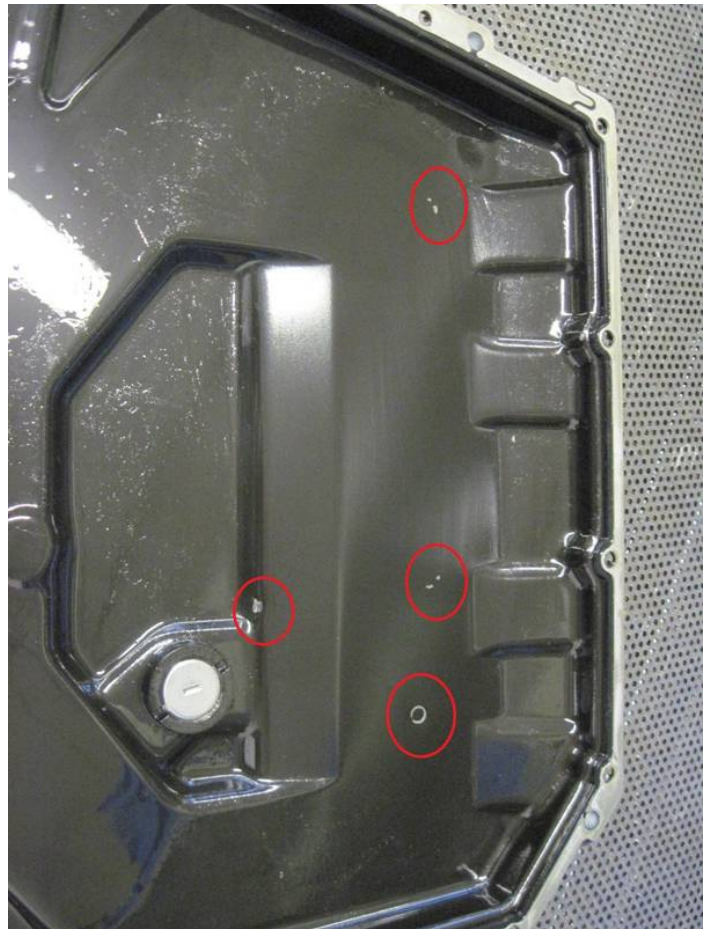
1. Locate the leak by first thoroughly cleaning and drying the stained area. Then, apply talcum spray (or similar) to the area that was stained with oil (Figure 4).



**Figure 4.** Leak located with Talcum spray.

2. Warm up the vehicle (test drive) and re-check for leaks.
3. If the leak is around the oil pan, remove the oil pan and check the gasket for imperfections or damage. If the oil pan is undamaged, only replace the oil pan seal.

4. If the oil pan is damaged (Figure 5), check the mechatronics for loose bolts (Figure 6). Replace any loose bolts and torque according to the repair manual instructions. Also, replace the pan and seal.



**Figure 5.** Damaged oil sump because of loose bolts.



**Figure 6.** Loose bolts in the mechatronics.

5. If pan is cracked as in Figure 2, and no loose bolts on the mechatronics unit are found, replace oil pan and seal.
6. If there is a leak between gearbox housing and intermediate housing as in Figure 3, reseal the case by following instructions in Elsa >> *Repair manual* >> *Transmission* >> *S Tronic Transmission Internal Components* >> *35 Gears, Shafts* >> *Removal and Installation* >> *Sensor Module with Transmission Input Speed Sensor -G612-, -G632-, -G676- and Circuit Board 3.*



**Note:** These instructions require transmission case disassembly. Audi Academy course # 950224 is required viewing before attempting repair service. Complete the course and the assessment # 950224B before attempting repair or warranty claim may be denied. The course and assessment can be found on the Audi Academy CRC site.



**Tip:** Use caution when lifting or lowering intermediate housing to avoid damage to components (Figure 7).



**Figure 7.** Caution points: drip tray Sensor module connector.

7. Assemble according to the repair manual and check/correct the oil level.

# Technical Service Bulletin



## Warranty

<b>Claim Type:</b>	Use applicable claim type. If vehicle is outside any warranty, this Technical Service Bulletin is informational only.		
<b>Service Number:</b>	3435		
<b>Damage Code:</b>	0050		
<b>Labor Operations:</b>	<b>Leaking around pan:</b>		
	Inspect pan and gasket for damage	3460 1999	10 TU
	<b>Pan gasket faulty no pan damage:</b>		
	Remove and install oil pan replace gasket.	3460 1900	160 TU
	<b>Pan damaged:</b>		
	Check mechatronics bolts, replace bolts and re-torque if needed.	3511 1999	30 TU
	Remove and replace oil pan with new gasket	3460 1900	160 TU
	<b>Case leaking:</b>		
	Remove and install gearbox	3435 19xx	See ELSA for appropriate TUs.
	Reseal transmission case leak	3512 1950	570 TU
<b>Diagnostic Time:</b>	Clean off oil and determine leak origin; includes one test drive.	3435 9999	90 TU
	GFF to perform basic setting and adaptation <b>after sensor replacement only</b>	0150 0000	Time stated on diagnostic protocol (Max 100 TU)
	Road test prior to service procedure	No allowance	0 TU

# Technical Service Bulletin



---

	Road test after service procedure	0121 0004	10 TU
	Technical diagnosis at dealer's discretion (Refer to Section 2.2.1.2 and Audi Warranty Online for DADP allowance details)		
<b>Claim Comment:</b>	As per TSB 2028085/4		

All warranty claims submitted for payment must be in accordance with the *Audi Warranty Policies and Procedures Manual*. Claims are subject to review or audit by Audi Warranty.

## Required Parts and Tools

Part Number	Part Description	Quantity
0B5321361C	Transmission pan (only if cracked/damaged)	1
0B5321371E	Gasket for transmission pan	1
N 10405702	Bolts for Mechatronics unit	6
G052529A2	Dual clutch gearbox oil (ATF)	Up to 7.5 Liters
<b>Parts needed for case leak reseal ( in addition to above)</b>		
G052513A2	Final Drive oil (MTF)	5.0 Liters
0B5927321F	Module	1
0B5321391A	Harness	1
AMV18800102	Sealing paste	1
0B5301515H	Pump with seals	1
WHT001955	Bolt	1
WHT002459	Bolt	28
WHT001958B	Bolt	2
0B5301227C	Seal kit	1
0B5323525B	O-ring	1
0B5311113F	Seal	1
0B5315105TC	Oil pipe with seals	1
0B5315105TA	Oil pipe with seals	1
0B5325571	Sleeve with seals	1
0B5311944B	Seal	4
0B5321473	Oil pipe	1
WHT003380	Seal	1
WHT003379	Seal	1
0B5301311E	Oil drip tray (Replace if broken)	1



# Technical Service Bulletin

---



## Additional Information

All parts and service references provided in this TSB are subject to change and/or removal. Always check with your Parts Department and service manuals for the latest information.