

Technical Service Bulletin



96 False warning by lane change assistant (Audi Side Assist)

96 13 81 2033782/3 December 6, 2013. Supersedes Technical Service Bulletin Group 96 number 13-75 dated September 23, 2013 for reasons listed below.

Model(s)	Year	VIN Range	Vehicle-Specific Equipment
A4 allroad	2013	000001-999999	Audi Side Assist (PR Code 7Y1)
A4 allroad	2014	000001-057893	Audi Side Assist (PR Code 7Y1)

Condition

REVISION HISTORY		
Revision	Date	Purpose
3	-	Revised <i>Technical Background</i> (Removed information about software) Revised <i>Service</i> (Removed SVM update instructions for software part number ending in "A") Revised <i>Warranty</i> (Adjusted TUs for GFF)
2	9/23/2013	Revised header data (Added customer code) Revised <i>Service</i> (Removed VAS-PC instructions; updated SVM update instructions) Revised <i>Warranty</i> (Added labor operations)
1	5/28/2013	Initial publication

- Customer complains that Audi Side Assist is providing false warnings (no vehicle is present in the blind spot). The concern may or may not be duplicated.
- No DTCs are present in the Audi Side Assist system.
- The mounting brackets for the control units may be loose or broken.

Technical Background

- Incorrect hardware from the supplier.
- The mounting bracket for the control units becomes loose over time.

Technical Service Bulletin



Production Solution

Improved hardware and software introduced into production.

Service

This TSB applies only to the A4 allroad. This information does not apply to A4/S4 sedans & A5/S5/RS 5 coupe vehicles. Please reference TSB 2030583 for A4/S4 sedans & A5/S5/RS 5 coupe vehicles.

1. Use the Control Module ODB function within ODIS to determine the hardware version, the production date, and the software part number of both the lane change assistance control module, J769, and the lane change assistance control module 2, J770:

Using ODIS:

- Start *Diagnosis* -> *Fill out Engine Information* from drop down menu -> *Uncheck option for "Guided Fault Finding"* --> *Select Tab "Control module list"* --> *Scroll down list to "3C Lane Change Assistant"* (ECU option will be greyed out) -> *Right click on "3C Lane Change Assistant"* and select *"Identify control module"* (Figure 1).
- Wait for the information to populate. This usually takes 5-10 seconds.

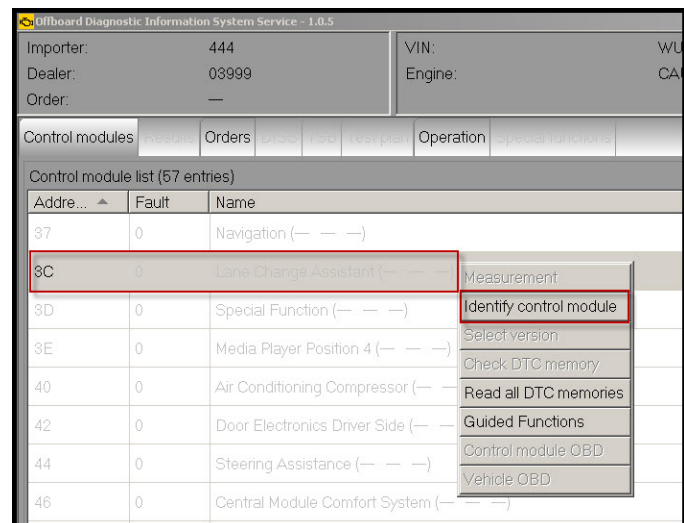


Figure 1. 3C Lane Change Assistant is greyed out until "Identify control module" is selected.

Technical Service Bulletin



- Once the information has populated, right-click on “3C Lane Change Assistant” and select “Control Module ODB” (Figure 2).
- Wait for the Control module ODB Results tab to populate the ECU information.

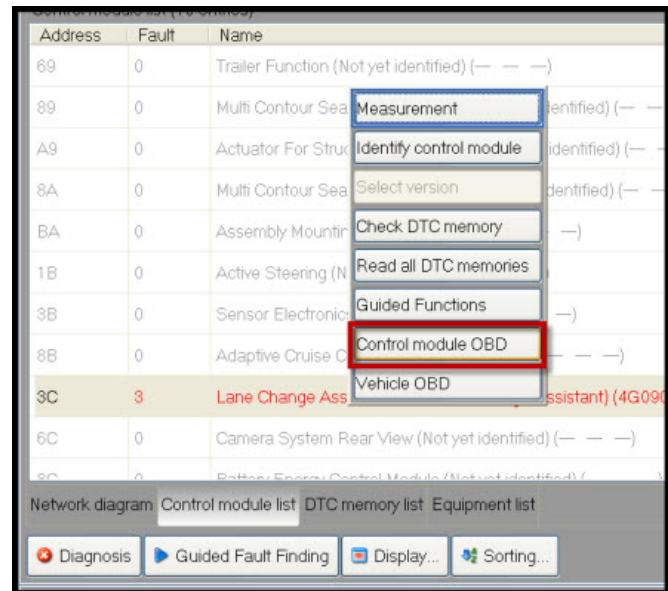


Figure 2. Control module ODB option is available after “Identify control module” completes.

- Under the Results tab, click on the button “Show Advanced Identification” (Figure 3), and then select the “Update” button on the right.

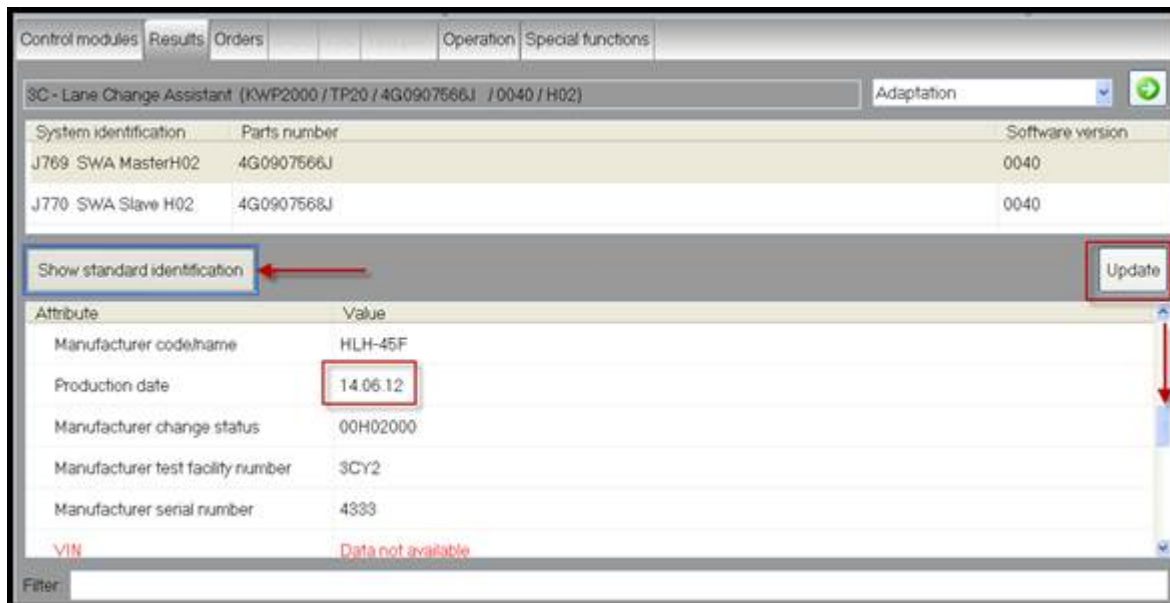


Figure 3. Control Module ODB screen showing part information and production date.

The part number, hardware version, and software version information will automatically populate at the top of the screen

- Click on the “SWA MasterHOX” at the top and then scroll down in the lower half of the screen until you get to the “Production date” field (“X” can be any number, i.e. “SWA MasterHO2” and will represent the

Technical Service Bulletin



hardware version of the ECU).

- Using the software part numbers first, then the hardware version, find the matching information on the left side of the table below, and proceed with the corresponding instructions on the right side. Only one set of instructions will apply.

<ul style="list-style-type: none"> Software part numbers are 8T0 907 566 A (J769) and 8T0 907 568 A (J770). Both control units have hardware version H16. One or both control units have a build date <i>before</i> 03/02/2012. 	Replace only the control module that has a build date before 3/2/2012, then proceed to step 3.
<ul style="list-style-type: none"> Software part numbers are 8T0 907 566 A (J769) and 8T0 907 568 A (J770). Both control units have hardware version H16. Both control units have a build date <i>after</i> 03/02/2012. 	Proceed to step 3.
<ul style="list-style-type: none"> Software part numbers are 8T0 907 566 A (J769) and 8T0 907 568 A (J770). Both control units have a hardware version H17 or higher. 	Proceed to step 3.
<ul style="list-style-type: none"> Software part numbers are 8T0 907 566 B (J769) and 8T0 907 568 B (J770) with SW version 0060. 	Update the software of the Master control unit using the SVM code listed below then proceed to step 3.

SVM Update Instructions

- Follow all instructions in the attached TSB, 2011732 00 Software Version Management (SVM), operating instructions.
- Update the parameterization of the master lane change assistance control module, J769, using the SVM action code as listed in the table below if necessary.

Model	Old Software Part Number	Old Software Version	New Software Part Number	New Software Version	SVM Code
A4 allroad	8T0 907 566 B	0060	8T0 907 566 B	0071	3CA010



Tip: The software update provided by this SVM code is specific to the A4 allroad, and the SVM code will not provide any software update for any other models. For other models, this SVM code will only provide a new parameter set, and will not change the software version. The new parameter set only addresses the “Sensors Blocked” condition as indicated in TSB 2035047.

3. Perform a visual inspection of the plastic mounting brackets for the J769 and J770 control units. It is possible the plastic weld has come loose or is broken apart from the rear bumper cover (Figure 5).



Figure 5. Bumper bracket weld locations with broken welds.

4. Replace the rear bumper cover assembly if the bracket is loose (Figure 6).



Figure 6. Loose bracket.

5. Replace the rear bumper cover assembly if the bracket is broken (Figure 7).



Figure 7. Broken bracket.

6. Recalibrate the Audi Side Assist system, regardless of whether or not the bumper cover is replaced.

Technical Service Bulletin



Warranty

Claim Type:	Use applicable claim type. If vehicle is outside any warranty, this Technical Service Bulletin is informational only.		
Service Number:	9635		
Damage Code:	0040		
Labor Operations:	Inspect control unit mounting bracket	6369 9999	10 TU
	Check ECU Identification Information	9635 9999	25 TU
	OR		
	Inspect control unit mounting bracket	6369 9999	10 TU
	Rear bumper cover remove+reinstall	6369 1912	90 TU
	Check ECU Identification Information	9635 9999	25 TU
	Remove and install 1 control unit for lane changing assistant	9635 1950	10 TU
	Adjust control units for lane changing assistant	9635 1500	70 TU
	OR		
	Inspect control unit mounting bracket	6369 9999	10 TU
	Rear bumper cover remove+reinstall	6369 1912	90 TU
	Check ECU Identification Information	9635 9999	25 TU
	Remove and install 2 control units for lane changing assistant	9635 2050	20 TU
	Adjust control units for lane changing assistant	9635 1500	70 TU
	OR		
	Inspect control unit mounting bracket	6369 9999	10 TU
	Rear bumper cover remove+reinstall	6369 1912	90 TU
	Rear bumper cover replace	6369 5562	40 TU
Check ECU Identification Information	9635 9999	25 TU	
Remove and install 1 control unit for lane changing assistant	9635 1950	10 TU	

Technical Service Bulletin



	Adjust control units for lane changing assistant	9635 1500	70 TU
	OR		
	Rear bumper cover remove+reinstall	6369 1912	90 TU
	Check ECU Identification Information	9635 9999	25 TU
	Rear bumper cover replace	6369 5562	40 TU
	Remove and install 2 control units for lane changing assistant	9635 2050	20 TU
	Adjust control units for lane changing assistant	9635 1500	70 TU
Diagnostic Time:	GFF	0150 0000	Time stated on diagnostic protocol (Max 60 TU)
	Road test prior to service procedure	0121 0002	10 TU
	Road test after service procedure	0121 0004	10 TU
	Technical diagnosis at dealer's discretion (Refer to Section 2.2.1.2 and Audi Warranty Online for DADP allowance details)		
Claim Comment:	As per TSB #2033782/3		

All warranty claims submitted for payment must be in accordance with the *Audi Warranty Policies and Procedures Manual*. Claims are subject to review or audit by Audi Warranty.

Required Parts and Tools

Part Number	Part Description	Quantity
8T0907566A	Control unit for lane change assist (MASTER)	As needed
8T0907568A	Control unit for lane change assist (SLAVE)	As needed
8K9807434A XXX	Spoiler (rear bumper)	As needed
8K9807511F GRU	Cover for bumper (rear upper)	As needed



Additional Information

All parts and service references provided in this TSB (2033782) are subject to change and/or removal. Always check with your Parts Department and service manuals for the latest information.