

Technical Service Bulletin



96 False warning by lane change assistant (Audi Side Assist)

96 13 75 2033782/2 September 23, 2013. Supersedes Technical Service Bulletin Group 96 number 13-62 dated May 28, 2013 for reasons listed below.

Model(s)	Year	VIN Range	Vehicle-Specific Equipment
allroad	2013	All	Not Applicable

Condition

REVISION HISTORY		
Revision	Date	Purpose
2	-	Revised header data (Added customer code) Revised <i>Service</i> (Removed VAS-PC instructions; updated SVM update instructions) Revised <i>Warranty</i> (Added labor operations)
1	5/28/2013	Initial publication

- Customer complains that Audi Side Assist is providing false warnings (no vehicle is present in the blind spot). The concern may or may not be duplicated.
- No DTCs are present in the Audi Side Assist system.
- The mounting brackets for the control units may be loose or broken.

Technical Background

- An incorrect hardware or software set created by the supplier.
- The mounting bracket for the control units becomes loose over time.

Production Solution

Improved hardware and software introduced into production.

Technical Service Bulletin



Service

This TSB applies only to the A4 allroad. This information does not apply to A4/S4 sedans & A5/S5/RS 5 coupe vehicles. Please reference TSB 2030583 for A4/S4 sedans & A5/S5/RS 5 coupe vehicles.

1. Use the Control Module ODB function within ODIS to determine the hardware version, the production date, and the software part number of both the lane change assistance control module, J769, and the lane change assistance control module 2, J770:

Using ODIS:

- Start *Diagnosis* -> *Fill out Engine Information from drop down menu* -> *Uncheck option for "Guided Fault Finding"* --> *Select Tab "Control module list"* --> *Scroll down list to "3C Lane Change Assistant" (ECU option will be greyed out)* -> *Right click on "3C Lane Change Assistant" and select "Identify control module"* (Figure 1).

Wait for the information to populate. This usually takes 5-10 seconds.

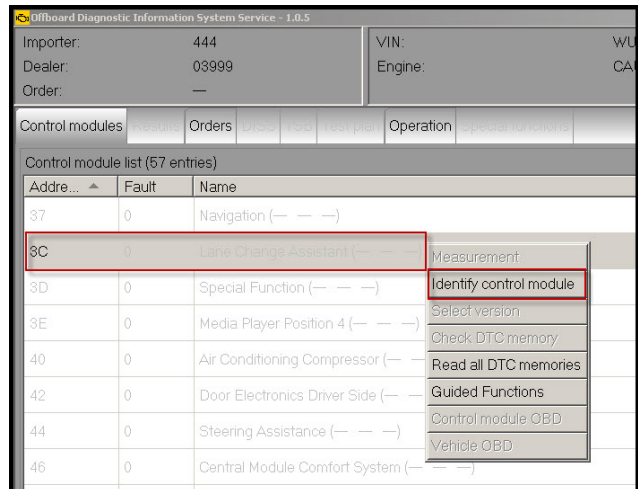


Figure 1. 3C Lane Change Assistant is greyed out until "Identify control module" is selected.

- Once the information has populated, right-click on "3C Lane Change Assistant" and select "Control Module ODB" (Figure 2).

Wait for the Control module ODB Results tab to populate the ECU information.

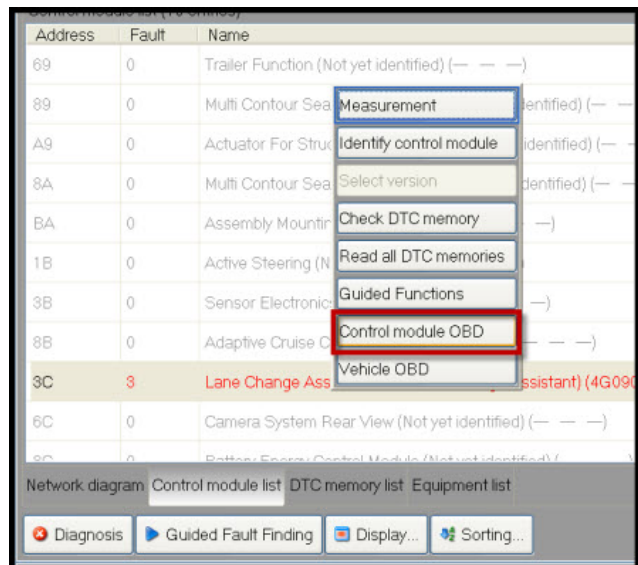


Figure 2. Control module ODB option is available after "Identify control module" completes.

- Under the Results tab, click on the button “Show Advanced Identification” (Figure 3), and then select the “Update” button on the right.

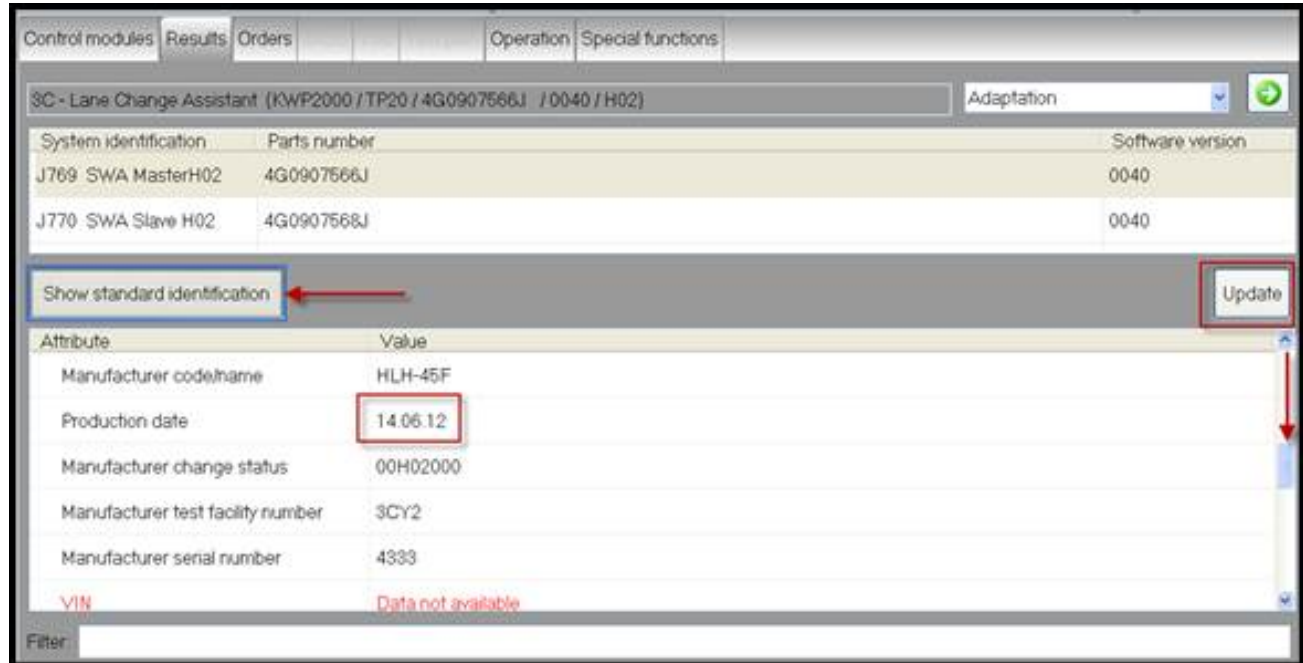


Figure 3. Control Module OBD screen showing part information and production date.

The part number, hardware version, and software version information will automatically populate at the top of the screen

- Click on the “SWA MasterH0X” at the top and then scroll down in the lower half of the screen until you get to the “Production date” field (“X” can be any number, i.e. “SWA MasterH02” and will represent the hardware version of the ECU).
2. Using the software part numbers first, then the hardware version, find the matching information on the left side of the table below, and proceed with the corresponding instructions on the right side. Only one set of instructions will apply.

Technical Service Bulletin



<ul style="list-style-type: none">• Software part numbers are 8T0 907 566 A (J769) and 8T0 907 568 A (J770).• Both control units have hardware version H16.• One or both control units have a build date <i>before</i> 03/02/2012.	<ol style="list-style-type: none">1. Replace only the control unit which has the early build date.2. Perform SVM code 3CA010 according to the table below. Only a new parameterization will be given. No major software update is performed.3. Proceed to step 3, below.
<ul style="list-style-type: none">• Software part numbers are 8T0 907 566 A (J769) and 8T0 907 568 A (J770).• Both control units have hardware version H16.• Both control units have a build date <i>after</i> 03/02/2012.	<ol style="list-style-type: none">1. Perform SVM code 3CA010 according to the table below. Only a new parameterization will be given. No major software update is performed.2. Proceed to step 3, below.
<ul style="list-style-type: none">• Software part numbers are 8T0 907 566 A (J769) and 8T0 907 568 A (J770).• Both control units have a hardware version H17 or higher.	<ol style="list-style-type: none">1. Perform SVM code 3CA010 according to the table below. Only a new parameterization will be given. No major software update is performed.2. Proceed to step 3, below.
<ul style="list-style-type: none">• Software part numbers are 8T0 907 566 B (J769) and 8T0 907 568 B (J770) with SW version 0060.	<ol style="list-style-type: none">1. Perform SVM code 3CA010 according to the table at the end of this section.2. Proceed to step 3, below.

3. Perform a visual inspection of the plastic mounting brackets for the J769 and J770 control units. It is possible the plastic weld has come loose or is broken apart from the rear bumper cover (Figure 5).



Figure 5. Bumper bracket weld locations with broken welds.

4. Replace the rear bumper cover assembly if the bracket is loose (Figure 6).



Figure 6. Loose bracket.

5. Replace the rear bumper cover assembly if the bracket is broken (Figure 7).



Figure 7. Broken bracket.

6. Recalibrate the Audi Side Assist system, regardless of whether or not the bumper cover is replaced.

Technical Service Bulletin



SVM Update Instructions

1. Follow all instructions in the attached TSB, 2011732: 00 Software Version Management (SVM), operating instructions.
2. Update the parameterization of the master lane change assistance control module, J769, using the SVM action code as listed in the table below if necessary.

Model	Old Software Part Number	Old Software Version	New Software Part Number	New Software Version	SVM Code
A4 allroad	8T0 907 566 A	40	8T0 907 566 A	40	3CA010
	8T0 907 566 B	60	8T0 907 566 B	71	



Tip: The SVM code provided is specific to the A4 allroad, and it will not work for any other vehicles. Because this SVM version only provides a new parameterization, the software version does not change.

Warranty

Claim Type:	Use applicable claim type. If vehicle is outside any warranty, this Technical Service Bulletin is informational only.		
Service Number:	9635		
Damage Code:	0040		
Labor Operations:	Inspect control unit mounting bracket	6369 9999	10 TU
	Check ECU Identification Information	9635 9999	25 TU
	OR		
	Inspect control unit mounting bracket	6369 9999	10 TU
	Rear bumper cover remove+reinstall	6369 1912	90 TU
	Check ECU Identification Information	9635 9999	25 TU
	Remove and install 1 control unit for lane changing assistant	9635 1950	10 TU
	Adjust control units for lane changing assistant	9635 1500	70 TU
	OR		
	Inspect control unit mounting bracket	6369 9999	10 TU
	Rear bumper cover remove+reinstall	6369 1912	90 TU

Technical Service Bulletin



	Check ECU Identification Information	9635 9999	25 TU
	Remove and install 2 control units for lane changing assistant	9635 2050	20 TU
	Adjust control units for lane changing assistant	9635 1500	70 TU
	OR		
	Inspect control unit mounting bracket	6369 9999	10 TU
	Rear bumper cover remove+reinstall	6369 1912	90 TU
	Rear bumper cover replace (allroad)	6369 5562	40 TU
	Check ECU Identification Information	9635 9999	25 TU
	Remove and install 1 control unit for lane changing assistant	9635 1950	10 TU
	Adjust control units for lane changing assistant	9635 1500	70 TU
	OR		
	Rear bumper cover remove+reinstall	6369 1912	90 TU
	Check ECU Identification Information	9635 9999	25 TU
	Rear bumper cover replace (allroad)	6369 5562	40 TU
	Remove and install 2 control units for lane changing assistant	9635 2050	20 TU
	Adjust control units for lane changing assistant	9635 1500	70 TU
Diagnostic Time:	GFF	0150 0000	Time stated on diagnostic protocol (Max 150 TU)
	Road test prior to service procedure	0121 0002	10 TU
	Road test after service procedure	0121 0004	10 TU
	Technical diagnosis at dealer's discretion (Refer to Section 2.2.1.2 and Audi Warranty Online for DADP allowance details)		
Claim Comment:	As per TSB #2033782/2		

Technical Service Bulletin



All warranty claims submitted for payment must be in accordance with the *Audi Warranty Policies and Procedures Manual*. Claims are subject to review or audit by Audi Warranty.

Required Parts and Tools

Part Number	Part Description	Quantity
8T0907566A	Control unit for lane change assist (MASTER)	As needed
8T0907568A	Control unit for lane change assist (SLAVE)	As needed
8K9807434A XXX	Spoiler (rear bumper)	As needed
8K9807511F GRU	Cover for bumper (rear upper)	As needed

Additional Information

All parts and service references provided in this TSB (2033782) are subject to change and/or removal. Always check with your Parts Department and service manuals for the latest information.