



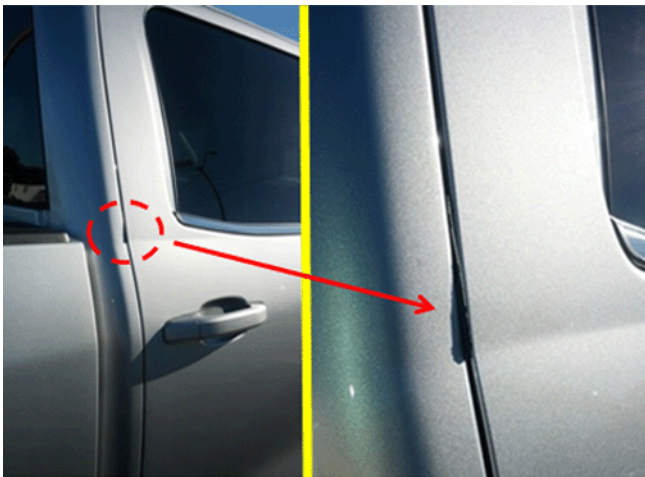
# Service Bulletin

## PRELIMINARY INFORMATION

**Subject:** Rear Door Weatherstrip Protrudes from Door Opening at Rear Beltline

**Models:** 2014 Chevrolet Silverado 1500 (Crew Cab only)  
2014 GMC Sierra 1500 (Crew Cab only)

### Condition/Concern



Some customers may comment on the driver or passenger side rear door weatherstrip protruding from the door opening at the rear beltline.

The cause of this condition may be the combination of the variance in excess weatherstrip seal mold in the forming process and/or individual rear door positioning.

### Recommendation/Instructions

**Important:** Do not replace the rear door weatherstrip for this condition.

Trim the "flag" portion of the weatherstrip seal to match the contour of the rear door, following the repair steps below:

1. Open the rear door.



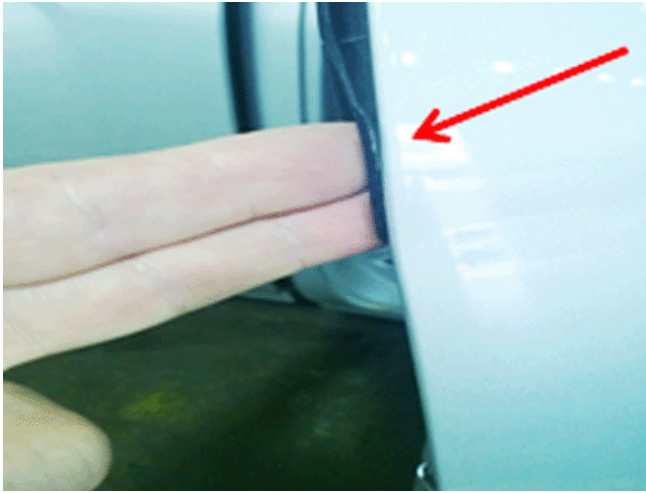
2. Press the protruding portion of the seal against the edge of the door.



3. Following the edge of the door, use a white pen or marker to trace a line onto the outside of the weatherstrip.



4. Using a pair of snips or sharp scissors, cut along the marked line and discard the removed piece.



**Note:** The edge of the weatherstrip should now be flush with the edge of door when held against it.

5. Hold the seal against the door again and check to make sure no material sticks out beyond the edge of the door.



6. Close the door and re-check to make sure the weatherstrip no longer protrudes past the door edge. If it does, repeat this procedure.

## Warranty Information

For vehicles repaired under warranty, use:

Labor Operation	Description	Labor Time
1480148*	Trim Rear Door Weatherstrip Seal	0.2 hr
*This is a unique labor operation for bulletin use only. It will not be published in the Labor Time Guide.		

GM bulletins are intended for use by professional technicians, NOT a "do-it-yourselfer". They are written to inform these technicians of conditions that may occur on some vehicles, or to provide information that could assist in the proper service of a vehicle. Properly trained technicians have the equipment, tools, safety instructions, and know-how to do a job properly and safely. If a condition is described, DO NOT assume that the bulletin applies to your vehicle, or that your vehicle will have that condition. See your GM dealer for information on whether your vehicle may benefit from the information.



WE SUPPORT VOLUNTARY TECHNICIAN CERTIFICATION