

Service Bulletin No:	13-006
Group:	27-Electrical & Meters
Issue Date:	07-05-2013

SERVICE BULLETIN

SUBJECT:
CORRECTION OF WORKSHOP MANUAL FOR 2011, 2012 and 2013 CONVENTIONAL MODELS
(CORRECTION OF DIAGNOSIS PROCEDURE OF CAN COMMUNICATION LINE)

The following is to inform you of the above caption. Moreover, to announce that this service data be attached to the relevant pages of the workshop manuals for maintenance, and to use for servicing.

CONDITION:

Correction of the terminals to be inspected in the diagnosis procedure of can communication line. (For DTC U0101)
Please refer to the page 2/3, 3/3 for the detail.

SUBJECT VEHICLES:

600 series 2011MY, 2012MY and 2013 MY (238, 258, 268, 338,)

SUBJECT MANUALS:

Model	Manual No.	Chapter	Page No.
USA 2011MY	S1-UNAE07B	Others (CAN Communication)	DN06-16,17
USA 2012MY	S7-UNAE08A,B		
USA 2013MY	S7-UNAE09A		

DETAIL OF CORRECTION:

Example: Manual No. S7-UNAE09A Page DN06-16

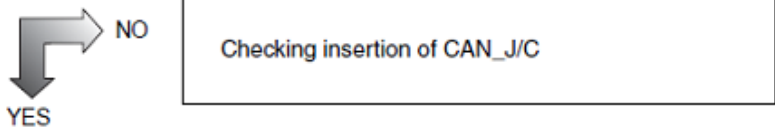
INSPECTION 2

Possible cause	[In case of "U0101" only]
	[In addition to "U0101" "U0105" and/or "U0155" are displayed]

- Harness disconnection between vehicle control ECU and DCU
- Loose fitting of joint connectors
- Abnormality in AT-ECU/AMT-ECU
- Harness disconnection between vehicle control ECU and the meter
- +B/GND short circuit in the H line or L line of the vehicle CAN line
- Loose fitting of joint connectors
- Communication failure due to other system abnormalities
- Abnormality in terminal resistance (vehicle control ECU or meter)
- Abnormality in AT-ECU/AMT-ECU

1. CHECKING OF THE DIAGNOSIS CODE

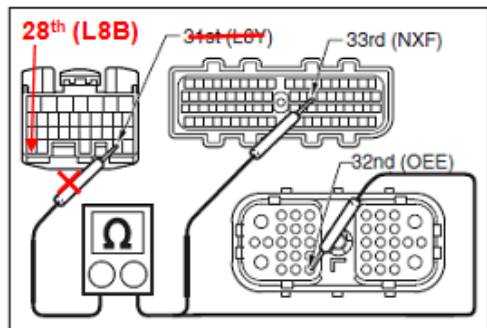
- (1) Shift position is not displayed on the meter
- (2) Diagnosis code is "U0101" only



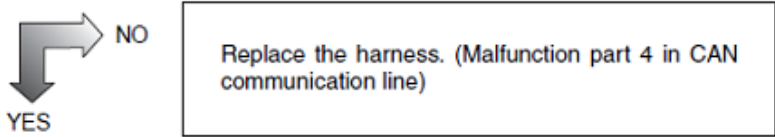
2. INSPECTION OF THE HARNESS BETWEEN AT-ECU/AMT-ECU AND VEHICLE CONTROL ECU (1)

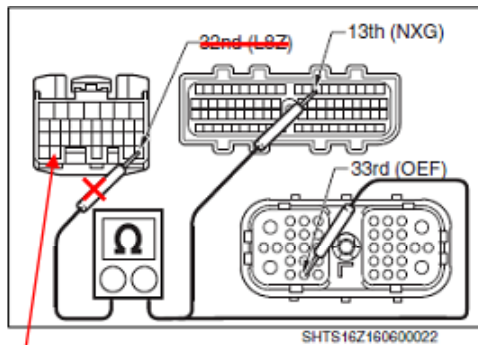
- (1) Check continuity between 33rd (NXF) terminal of the AT-ECU connector (80P) or 32nd (OEE) terminal of AMT-ECU connector (38P) and 31st (L8Y) terminal of the vehicle control ECU connector (32P)

Standard value: Less than 1Ω



Wrong: 31st (L8Y)
Correct: 28th (L8B)





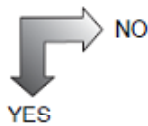
29th (L8C)

3. INSPECTION OF THE HARNESS BETWEEN AT-ECU/AMT-ECU AND VEHICLE CONTROL ECU (2)

- (1) Check continuity between the 13th (NXG) terminal of the AT-ECU connector (80P) or the 33rd (OEF) terminal of the AMT-ECU connector (38P) and the ~~32nd (L8Z)~~ terminal of the vehicle control ECU connector (32P)

Standard value: Less than 1Ω

Wrong: 32nd (L8Z)
Correct: 29th (L8C)



Replace the harness. (Malfunction part 4 in CAN communication line)

Replace the AT-ECU/AMT-ECU.