

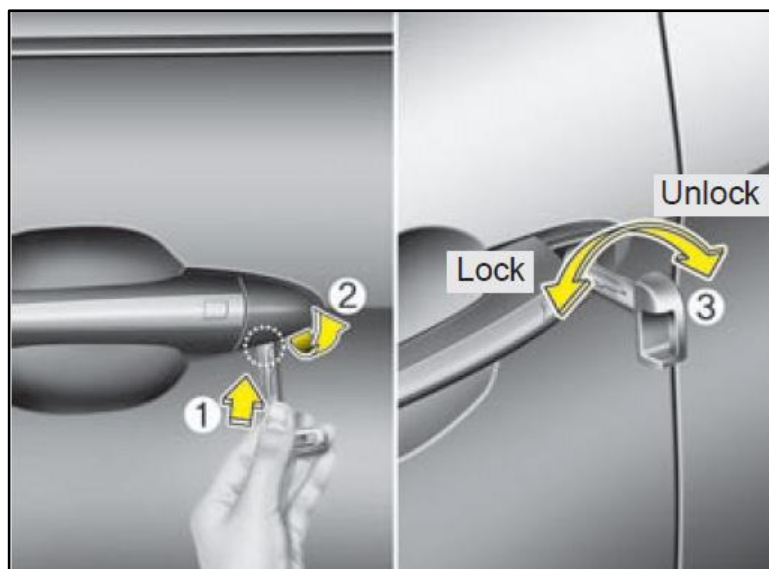
	GROUP Body	MODEL Cadenza (VG)
	NUMBER PS272 (Rev 1, 09/03/2013)	DATE September 2013
 		
SUBJECT: LOCATING THE DRIVER'S DOOR LOCK CYLINDER, TRUNK LOCK CYLINDER AND THE TRUNK LID CONTROL BUTTON		

This article provides information about the location of the driver's door lock and trunk lock cylinders on all Cadenza vehicles.

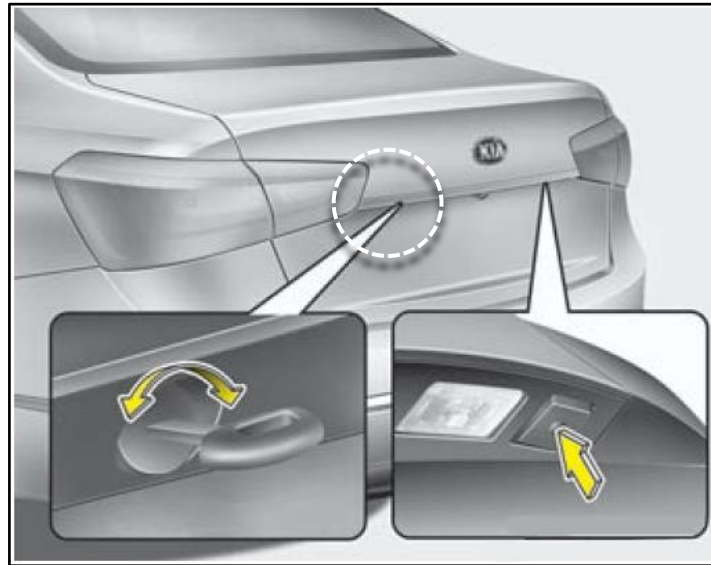
I. To access the driver's door lock cylinder:

- Remove the key from the fob.
- Locate the trim cover release catch on the underside of the door handle.
- Depress the release catch using the key (1) and pull the trim cover up and away from the door handle (2), to expose the door lock cylinder.



II. To access the trunk lock cylinder:

- Look in the area to the left of the rear view camera location, as shown below.



III. When diagnosing a concern related to an inoperative trunk, open the glove box and verify the current setting for the trunk lid control button. If the button is set to the “OFF” position, the vehicle is in valet mode and the trunk can only be opened using the mechanical key. Depress the trunk lid button to set it to the “ON” position and verify normal trunk release operation, using the smart key or the in dash release button.

