



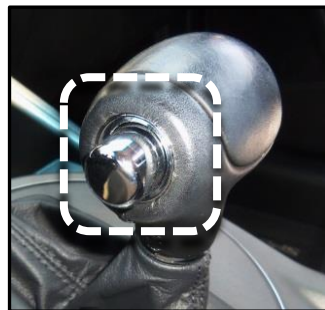
GROUP <b>Transmission</b>	MODEL <b>2011-2012MY Sportage (SL)</b>
NUMBER <b>048</b>	DATE <b>September 2013</b>

## TECHNICAL SERVICE BULLETIN

**SUBJECT: COMBINED TSB/SERVICE ACTION: SHIFT KNOB TRIM RING REPLACEMENT PROCEDURE (SA147)**

This bulletin provides the procedure to replace the shift knob trim ring on some Sportage (SL) vehicles, produced from May 6, 2010 to June 8, 2011 (2011MY) and from May 17, 2011 to March 23, 2012 (2012MY), which may exhibit a difficult to depress A/T shift knob button. This condition may be caused by decreased clearance between the shift button and the trim ring. Replace the affected trim ring to resolve the concern by following the Service Procedure outlined in this bulletin. Before conducting the procedure, verify the vehicle is included in the list of affected VINs.

For vehicles not on the Affected Vehicles list, but with a customer concern as described above, perform the following procedure outlined in this bulletin and submit a warranty claim per "customer concern" (Standard TSB) claim information on page 4.



**Shift Knob Trim Ring Assembly**

### **\* NOTICE**

**A Service Action is a repair program without customer notification that is performed during the warranty period. Any dealer requesting to perform this repair outside the warranty period will require DPSM approval.**

**Repair status for a VIN is provided on WebDCS (Service> Warranty Coverage> Warranty Coverage Inquiry> Campaign Information). Not completed Recall / Service Action reports are available on WebDCS (Consumer Affairs> Not Completed Recall> Recall VIN> Select Report), which includes a list of affected vehicles.**

**This issue number is SA147.**

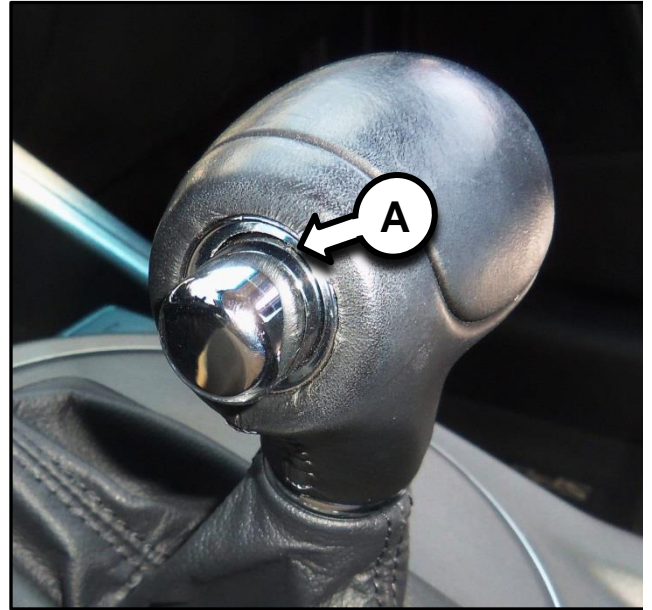
**File Under: <BODY>**

**Circulate To:**     **General Manager**     **Service Manager**     **Parts Manager**  
 **Service Advisors**     **Technicians**     **Body Shop Manager**     **Fleet Repair**

**SUBJECT: COMBINED TSB/SERVICE ACTION: SHIFT KNOB TRIM RING REPLACEMENT PROCEDURE (SA147)**

**SERVICE PROCEDURE:**

1. Locate the shift knob trim ring (A), as shown.

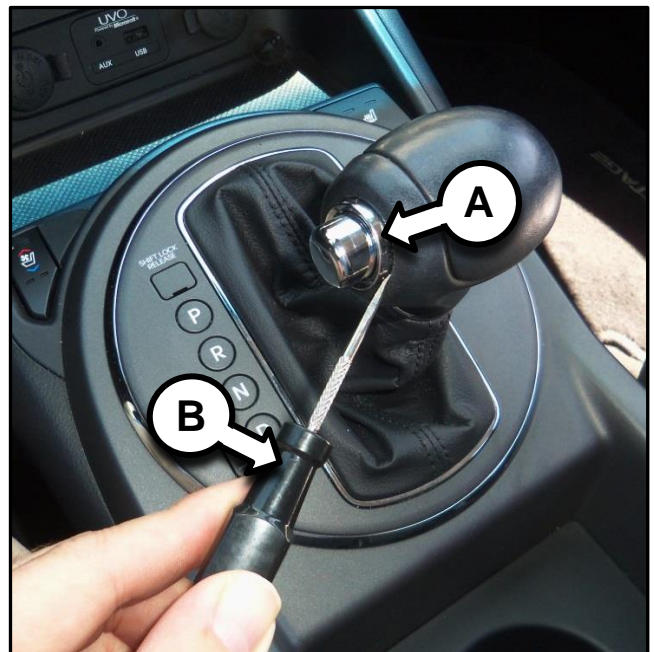


2. Remove the trim ring (A) from the shift knob by gently prying it off with a small flat head screwdriver (B). Discard the trim ring.



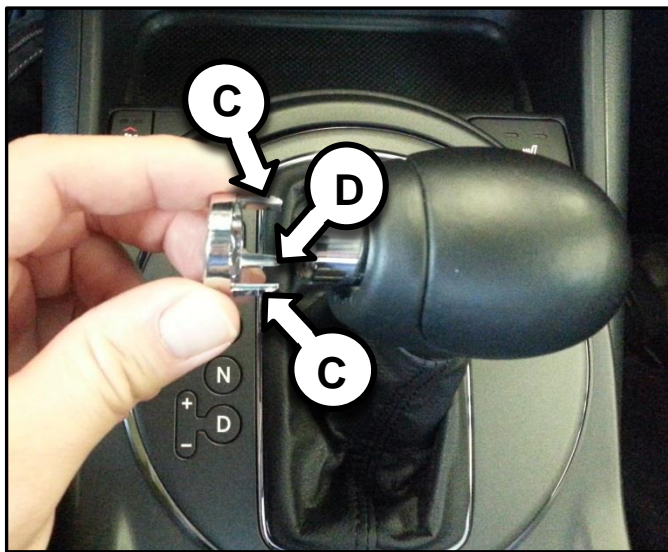
**CAUTION**

Avoid damaging the shift knob or the shift button when removing the trim ring.

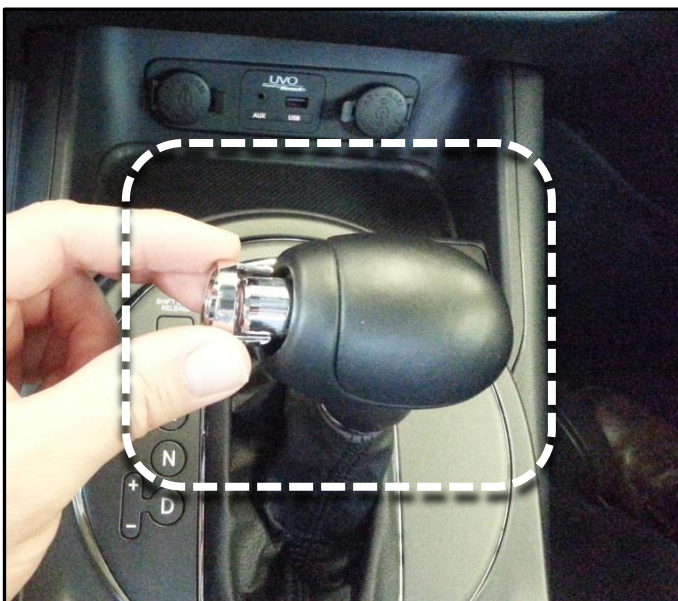


**SUBJECT: COMBINED TSB/SERVICE ACTION: SHIFT KNOB TRIM RING REPLACEMENT PROCEDURE (SA147)**

3. Install the new trim ring into the space between the shift button and the shifter body. Make sure the two (2) hook shaped projections (C) engage the upper mounting locations and the smooth projection (D) engages the lower mounting location.



4. Push the new trim ring into place until fully seated inside the shift knob.



5. Operate shift knob button to confirm proper operation.

**SUBJECT: COMBINED TSB/SERVICE ACTION: SHIFT KNOB TRIM RING REPLACEMENT PROCEDURE (SA147)**

**AFFECTED VEHICLE PRODUCTION RANGE:**

Model	MY	Production Date Range
Sportage (SL)	2011	From May 6, 2010 through June 8, 2011
	2012	From May 17, 2011 through March 23, 2012

**REQUIRED PART:**

Part Name	Part Number	MY	Qty	Comments
Liner	46724 3W000	2011	1	TSB
Liner	46724 3W000QQK	2012	1	SA

**SERVICE ACTION WARRANTY CLAIM INFORMATION:**

Claim Type	Causal P/N	Qty	N Code	C Code	Repair Desc.	Labor Op Code	Op Time	Replacement P/N	Qty
V	46720 3W050 GAH	0	N66	C63	(SA147) A/T Knob Trim Ring Replace	130061R0	0.2 M/H	46724 3W000QQK	1

**STANDARD WARRANTY CLAIM INFORMATION:**

Use this information only to file a warranty claim for vehicles for which:

1. A customer complains of the same concern.
2. The VIN does not appear on the Affected Vehicles list for Service Action 147.
3. The vehicle model year and production date range are as identified in this bulletin.

Claim Type	Causal P/N	Qty	N Code	C Code	Repair Desc.	Labor Op Code	Op Time	Replacement P/N	Qty
W	46720 3W050 GAH	0	N66	C63	(TSB TRA048) A/T Knob Trim Ring Replace	43711F00	0.2 M/H	46724 3W000	1

**\* NOTICE**

**VIN inquiry data for this repair is provided for tracking purposes only. Kia retailers should reference SA147 when accessing the WebDCS system.**