

REFERENCE:	Nova Bus Manuals
SECTION:	12 Interior Styling
RS N°:	MQR 7621-327
EFFECTIVE IN PROD.:	L652-05 (2012JA)

APPLICATION DEADLINE: 2014OC10
-----------------------------------

SUBJECT:	One or two-place Aries model cantilever transversal seat, without stanchion
JUSTIFICATION:	Bolts on these seats could become loose, which could cause the seat to drop.

LEVEL	DESCRIPTION	DIRECT CHARGES		TIME
		LABOUR	MATERIAL	
1	Tighten the seat bolts to the torque indicated in this bulletin.	Nova Bus	Nova Bus	10 min/ seat
2	–	–	–	–

**MATERIAL**

QTY	PART N°	REV.	DESCRIPTION	REPLACES PART N°
<b>LEVEL 1</b>				
–	–	–	–	–
<b>LEVEL 2</b>				
–	–	–	–	–

**DISPOSAL OF PARTS**

REMOVED PARTS ARE:	DISCARDED	RETAINED	–
	–	–	

**REVISION HISTORY**

REV.	DATE	CHANGE DESCRIPTION	WRITTEN BY
NR	2012SE14	Initial release	Danielle Lacroix
R1	2013OC10	Adding clients to list	

CLIENT	ORDER	ROAD NUMBER		VIN (2NVY/4RKY...)		QTY
		FROM	TO	FROM	TO	
Brantford - Ontario	L547	10101	10105	L82X6A3000082	L82X3A3000086	5
Brantford - Ontario	L663	—	—	L82U1B3000532	L82U1B3000532	1
Clemson Area Transit - South Carolina (ref L722)	L641	—	—	L82U1C4500005	L82U9C4500009	4
CMBC (TransLink) - British Columbia	L412	9401	9401	L82X993000136	L82X993000136	1
CMBC (TransLink) - British Columbia	L454	9402	9470	L82X793000359	L82XX93000453	69
CMBC (TransLink) - British Columbia	L455	9471	9491	L82X093000459	L82X993000489	21
CMBC (TransLink) - British Columbia	L482	9492	9517	L82X894000040	L82X094000064	25
CMBC (TransLink) - British Columbia	L483	9518	9542	L82X294000065	L82X594000089	25
CMBC (TransLink) - British Columbia	L532	9543	9551	L82U093000497	L82U693000505	9
CMBC (TransLink) - British Columbia	L533	9552	9573	L82U193000511	L82U093000537	22
CMBC (TransLink) - British Columbia	L534	9574	9589	L82U694000124	L82U894000139	16
CMBC (West Vancouver) - British Columbia	L539	901	909	L82U494000140	L82U994000148	9
Grand River Transit - GRT - Ontario	L464	20901	20913	L82U193000296	L82U493000308	13
Grand River Transit - GRT - Ontario	L560	21001	21009	L82U2A3000246	L82U1A3000254	9
Grand River Transit - GRT - Ontario	L599	—	—	L82X9B3000465	L82X2B3000467	3
Grand River Transit - GRT - Ontario	L631	—	—	L82X4B3000468	L82X2B3000470	3
Grand River Transit - GRT - Ontario	L633	21101	21115	L82U7B3000289	L82U8B3000303	15
Halifax - Nova Scotia	L613	732	741	S92UXB3000019	S92UXB3000028	10
Honolulu - Hawaii	L559	201	224	L82U6A4000113	L82U7A4000136	24
Marketing Sales Demo - MSD 4	L641	—	—	L82U5C4500010	L82U5C4500010	1
Marketing Sales Demo - MSD 5	L619	—	—	L82X7C3000367	L82X7C3000367	1
Marketing Sales Demo - MSD 6 Houston	L628	—	—	L82U8C4500003	L82UXC4500004	2
New York City Transit - New York	L536	1200	1201	S92U793000490	S92U993000491	2
New York City Transit - New York	L545	1202	1289	S92U5A4000001	S92U0A4000098	88
New York City Transit - New York	L608	8000	8014	L82U6B4000047	L82U0B4000061	15
New York City Transit - New York	L620	8015	8074	L82U2B4000062	L82U7B4000123	60
New York City Transit - New York	L621	8075	8089	L82U9B4000124	L82U9B4000138	15
New York City Transit - New York	L643	5895	5895	S92U1B4000143	S92U1B4000143	1
New York City Transit - New York	L670	5770	5894	S92U4C4500024	S92U3B4000242	125
New York City Transit - New York	L681	5896	5283	S92U2C4500023	S92U9C4500195	122
New York City Transit - New York	L692	5284	5363	S92U3C4500158	S92U3D4500274	80
Niagara Falls - Ontario	L652	—	—	S92U3C3000607	S92U6C3000617	11
Sault Ste-Marie Transit Services - Ontario (ref L686)	L641	—	—	L82U7C4500008	L82U6C4500016	5
St. John's - Newfoundland	L687	1201	1209	L82U7C3000598	L82U2C3000606	9
Sudbury - Ontario	L632	811	817	L82U9B3000326	L82U4B3000332	7
University Of Duke - North Carolina (ref. L703)	L641	—	—	L82U9C4500012	L82U1C4500022	8
Woodstock - Ontario	L460	—	—	L82U693000309	L82U693000309	1

**WARNING**

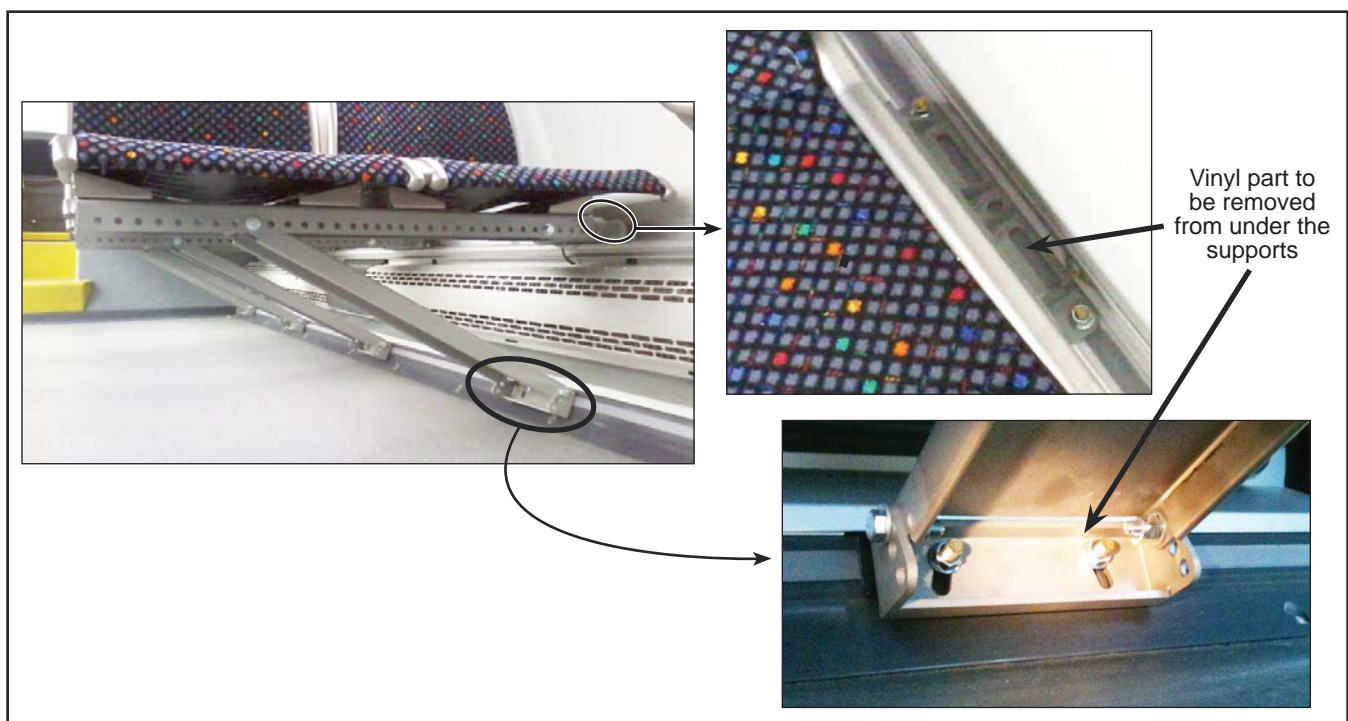
Follow your internal safety procedures.

**NOTE**

Seats installation is typical. Seats appearance may differ.

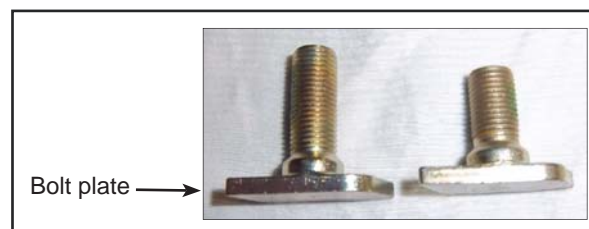
## PROCEDURE

- 1.1. One at a time, for each of the cantilever transversal seats, one or two-place, that are **NOT SUPPORTED BY A STANCHION**, remove and retain the hardware that attaches the seat to the vehicle. See Figure 1.



*Figure 1 - Location of the Vinyl Part to be Removed*

- 1.2. Verify the shape of the bolt plate (Figure 2). If it is distorted, take note of the seat location for each distorted bolt and continue the installation of the seat as per this service bulletin. Then, notify your service representative of the presence of the distorted bolts.



*Figure 2 - Conforming Bolt Plate*

- 1.3. Whether the bolt is distorted or not, remove the vinyl part that is located under the upper and lower bench supports. See Figure 1.
- 1.4. The vinyl parts on each side of the support must not come into contact with the underside of the support. If necessary, trim the pieces to shorten them. See Figure 3.

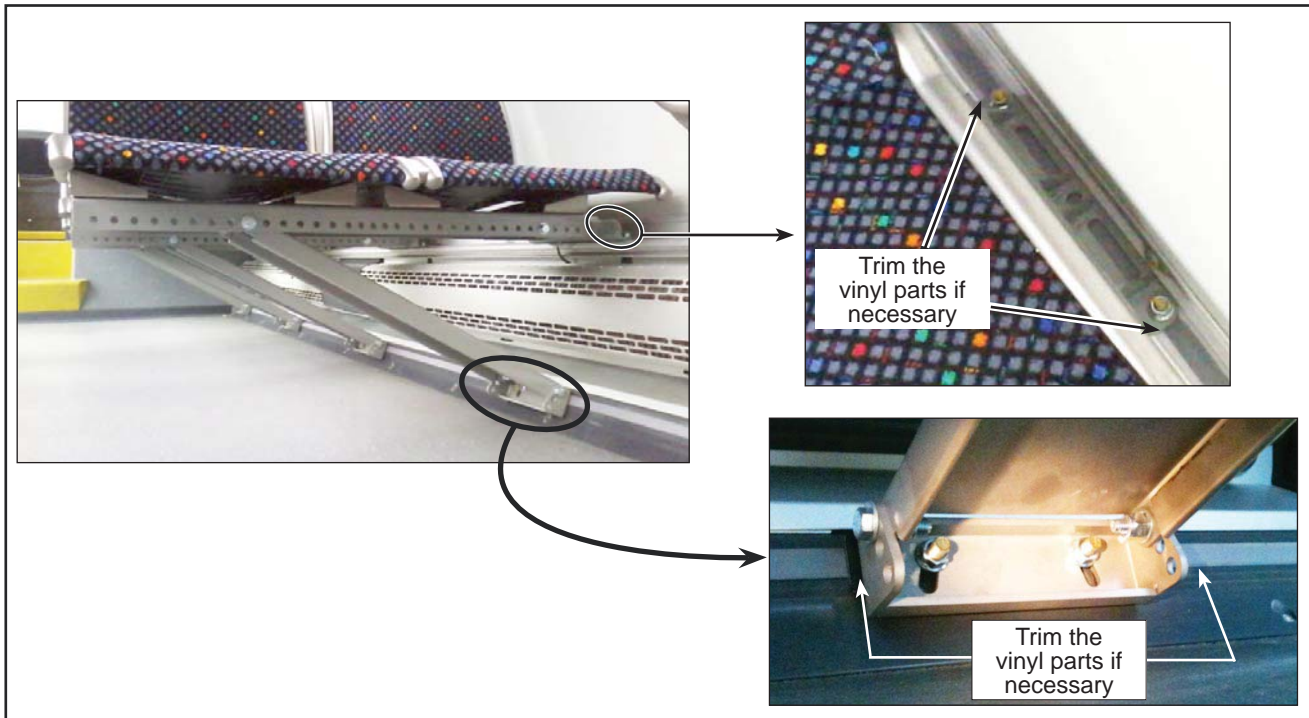


Figure 3 - Location of the Vinyl to be Trimmed

- 1.5. Reinstall the bench in its original position. To obtain the proper position of the bolt, ensure that the groove at the end of the threaded stem is perpendicular to the rail. See Figure 4.



Figure 4 - Conforming Position of the Bolt in the Rail

- 1.6. Apply the following torques while using medium thread locker, such as Loctite (blue) or an equivalent. See Figure 5.

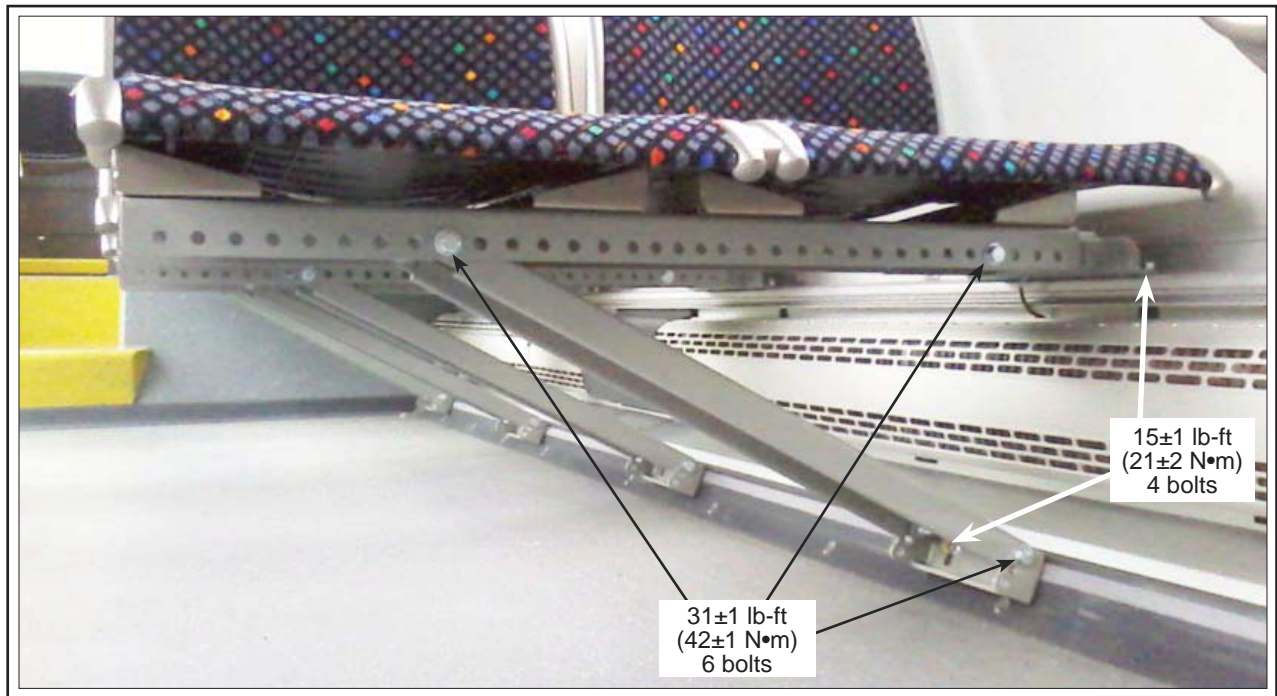


Figure 5 - Torques to Apply on the Cantilever seats

- 1.7. Apply a torque seal mark on the retightened bolts.
  - 1.8. Perform an inspection after 6,000 mi. (10,000 km) to ensure the integrity of the torque seal. Tighten if necessary.
- ❖