

VOLUNTARY CAMPAIGN BULLETIN

SUBJECT:	ENGINE CONTROL UNIT (ECU) SOFTWARE ENHANCEMENT
DATE:	04-11-2013
BULLETIN NO.:	RCB-002-13
CAMPAIGN NO.:	A8670
AFFECTED MODELS:	Certain 2011, 2012 and 2013 model year NE8J, NJ8J, NV8J vehicles.

Important: Verify on the Hino DCS Warranty System that the vehicle needs to have this work performed.

CONDITION:

During vehicle operation, the Malfunction Indicator Lamp (MIL) may illuminate and/or the vehicle will experience reduced power.

SUBJECT VEHICLES:

Certain 2011, 2012 and 2013 model year NE8J, NJ8J, NV8J Conventional Hino Trucks which were assembled at the Williamstown, West Virginia assembly plant and equipped with a J08 engine.

BEFORE YOU BEGIN:

Read and understand all instructions and procedures before you begin. Read and observe all Notes, Cautions and Warning safety alerts that precede these instructions while following these procedures. The alerts help to avoid damage to components, serious personal injury, or both.

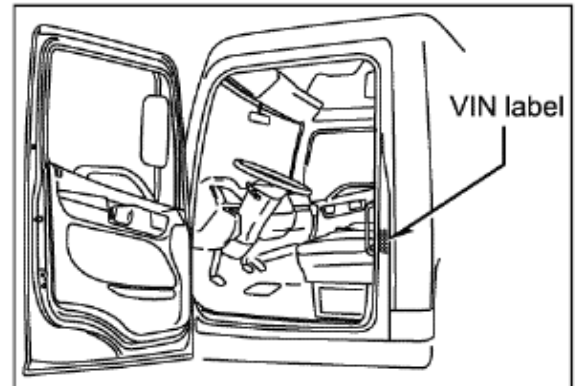
!!! WARNING !!!

- Park the vehicle on a level and solid surface and apply the parking brake.
- Confirm the engine is stopped, the starter switch is in the off (LOCK) position, and the key is removed.
- Wear safety glasses to prevent eye injuries.
- Place wheel chocks in front of and behind all wheels.
- A battery charger is installed on the vehicle to insure battery power does not go low during ECU reprogramming.
- The laptop battery state is fully charged or a remote AC power supply is hooked to the laptop to insure the battery power does not go low during ECU reprogramming.

VOLUNTARY CAMPAIGN BULLETIN

Once Recall Is Completed

Complete a recall sticker and affix to the left door jam above the V.I.N. decal.



PART APPLICATION CHART:

PART NUMBER	DESCRIPTION	QUANTITY
89663-E1V13	11MY J08EVC ECU Software	As Required By VIN
89663-E1V23	11MY J08EVB ECU Software	
89663-E2773	12MY J08EVC ECU Software	
89663-E2783	12MY J08EVB ECU Software	
89663-E2B42	12MY RC J08EVC ECU Software	
89663-E2B52	12MY RC J08EVB ECU Software	
89663-E2P12	13MY J08EVC ECU Software	
89663-E2P22	13MY J08EVB ECU Software	

Note: Before starting, download rpr file from Hinonet for the specific Vehicles Vin number. After programming has been completed make sure inf file is uploaded back onto Hinonet.

VOLUNTARY CAMPAIGN BULLETIN

VEHICLE PREPARATION:

1. Park the vehicle on level ground.

2. Confirm the engine is stopped, the starter switch is in the off (LOCK) position, and the key is removed.



3. Apply the parking brakes.



4. Chock all of the wheels.



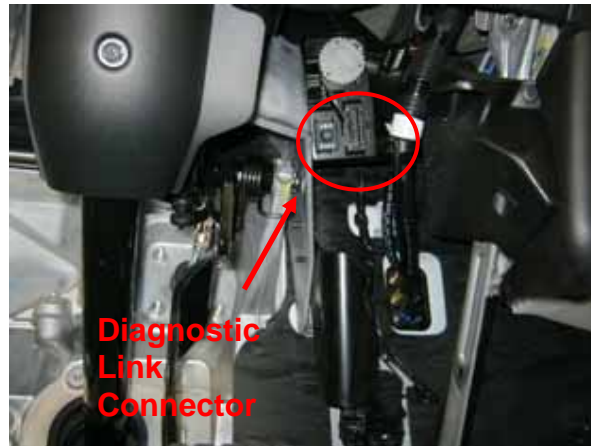
VOLUNTARY CAMPAIGN BULLETIN

ECU REPROGRAMMING PROCEDURE:

1. To assemble the interface cable, perform the following steps.
 - a. Connect the DLC (Diagnostic Link Connector) Cable to the DST-i.
 - b. Connect the USB Cable to the DST-i.
 - c. Connect the USB connector to the USB port on your computer.



2. Connect the remaining DLC cable connector to the vehicle's DLC connector. The DLC connector is found under the dash on the right side of the steering column.

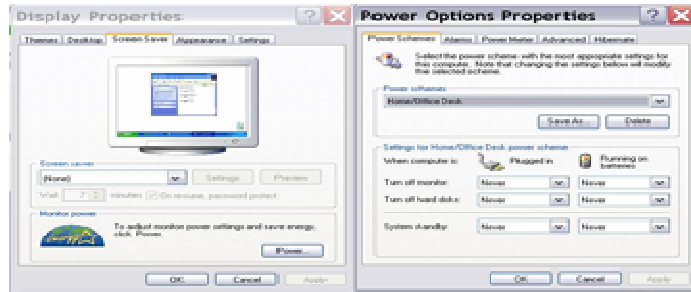


NOTE: Only the DSTi is acceptable for this procedure.

VOLUNTARY CAMPAIGN BULLETIN

WARNING: Disable the computer features listed below. Failure to disable these features may severely damage the vehicle's Engine Control Unit (ECU).

- ✓ Screen saver
- ✓ Energy saving features
 - Monitor
 - Hard disks
 - System standby

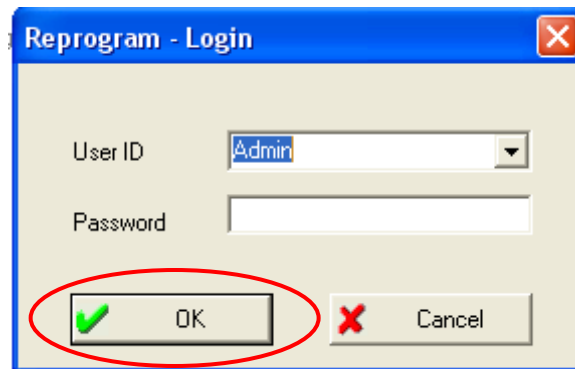


NOTICE: The illustrations above depict what you will see on your computer screen with regard to the features which must be disabled. The location on the screen of the features to be disabled will vary based upon the operating software. Consult your IT department as required.

3. On your computer, locate the Hino Reprogram Manager icon and open it.



4. The Hino Reprogram Manager will prompt you for a password. Enter your password and then select the "OK" icon.

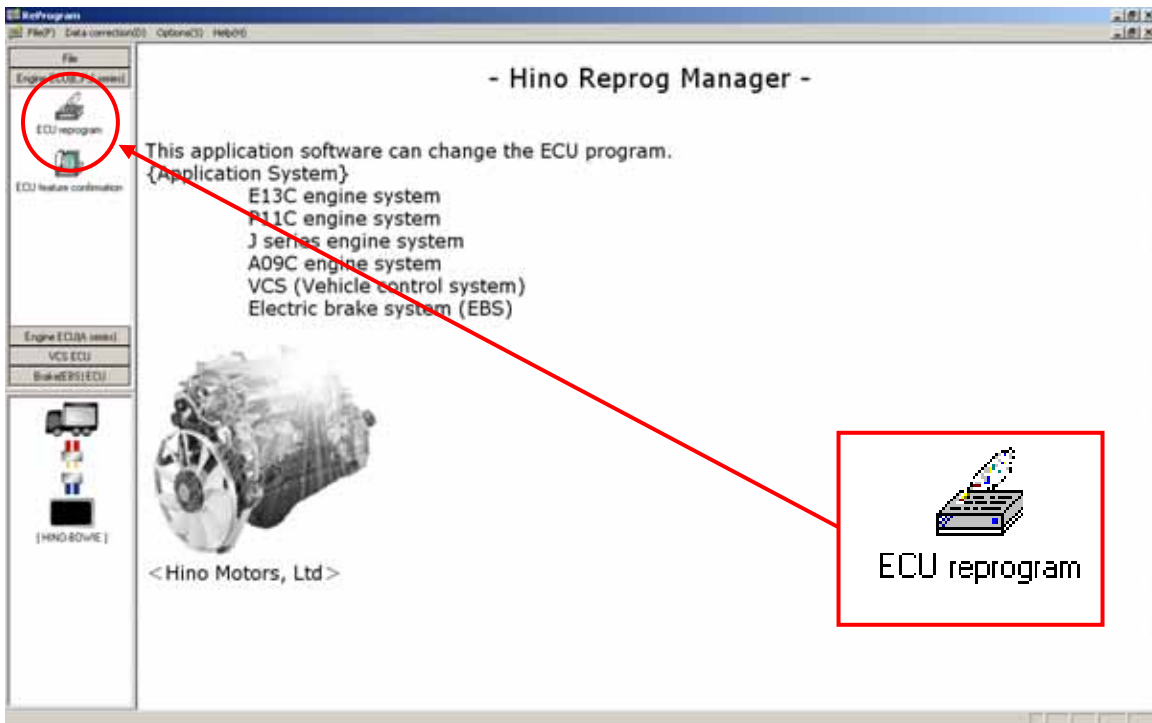


VOLUNTARY CAMPAIGN BULLETIN

5. Insert the starter key into the starter switch and turn the key to the “ON” position.

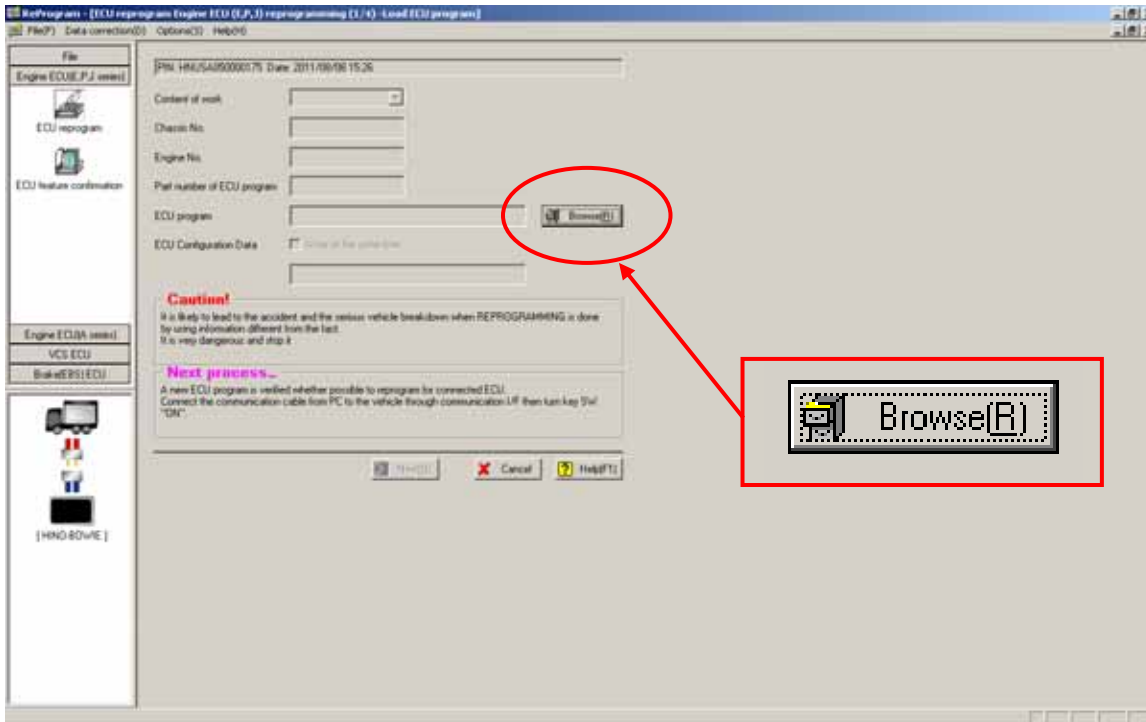


6. Select the “ECU reprogram” icon.

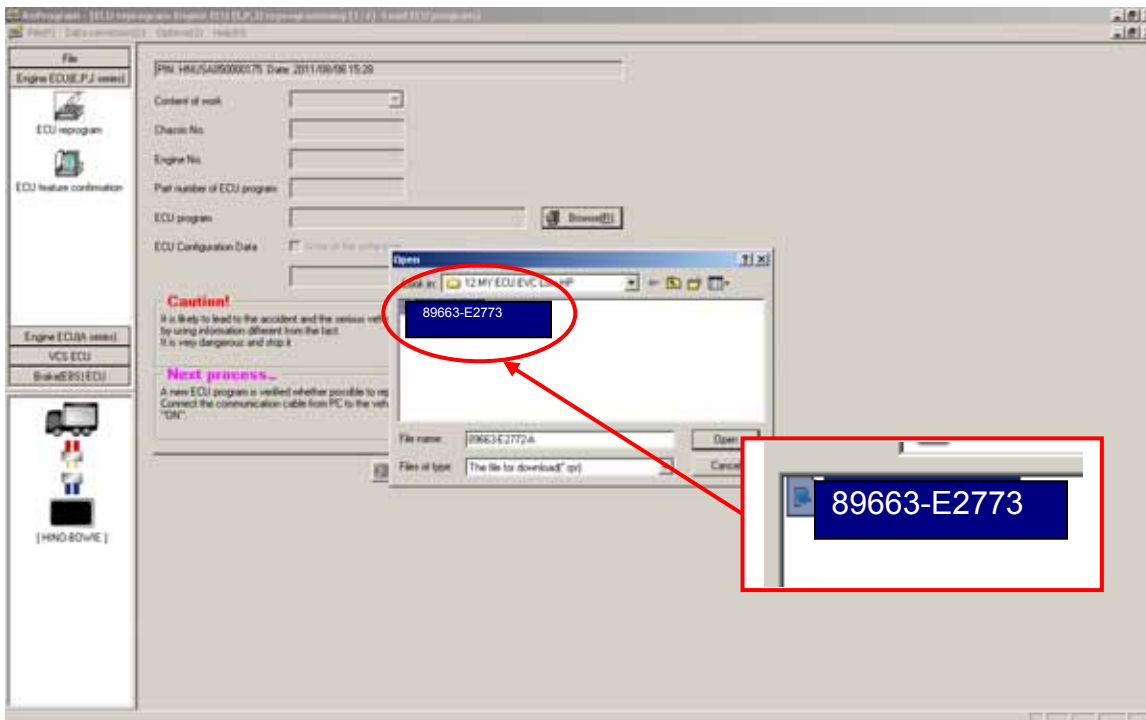


VOLUNTARY CAMPAIGN BULLETIN

7. Select the “Browse (R)” icon.



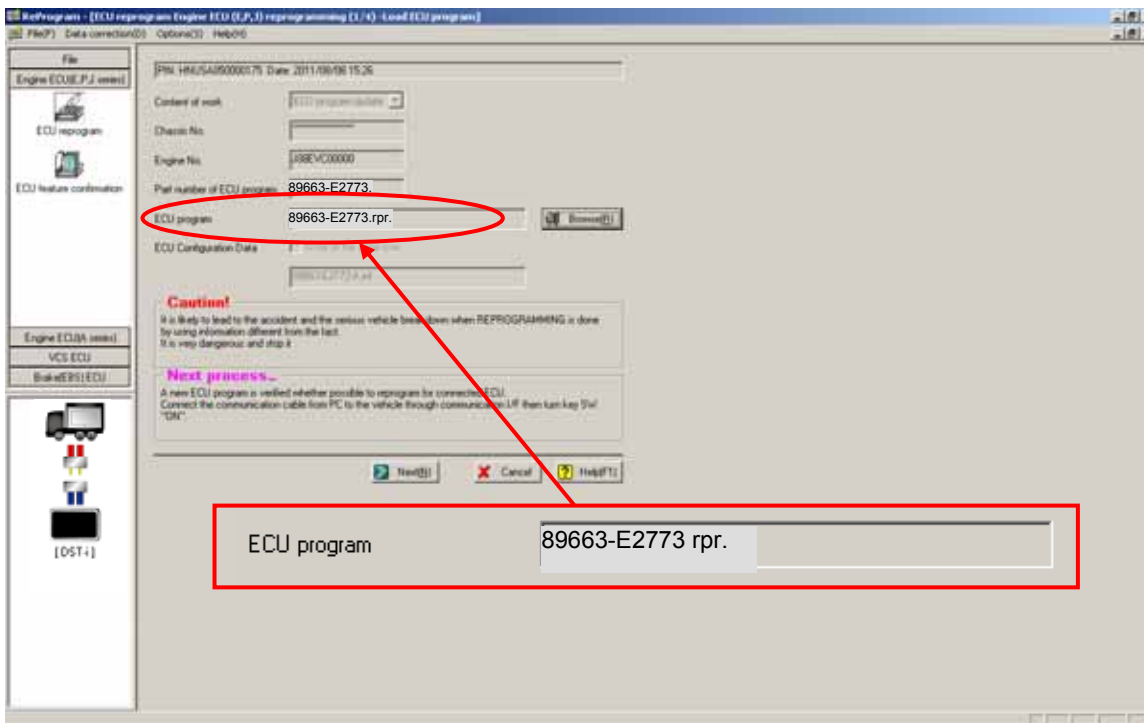
8. Locate and open the “ECU_xxxxxxxx.rpr” file that contains the revised Engine Control Unit (ECU) software.



VOLUNTARY CAMPAIGN BULLETIN

NOTE: The ECU .rpr file part number will vary dependent upon the ECU software version with which the vehicle was built. The photograph above references an ECU part number but is only an example of the file number you may see.

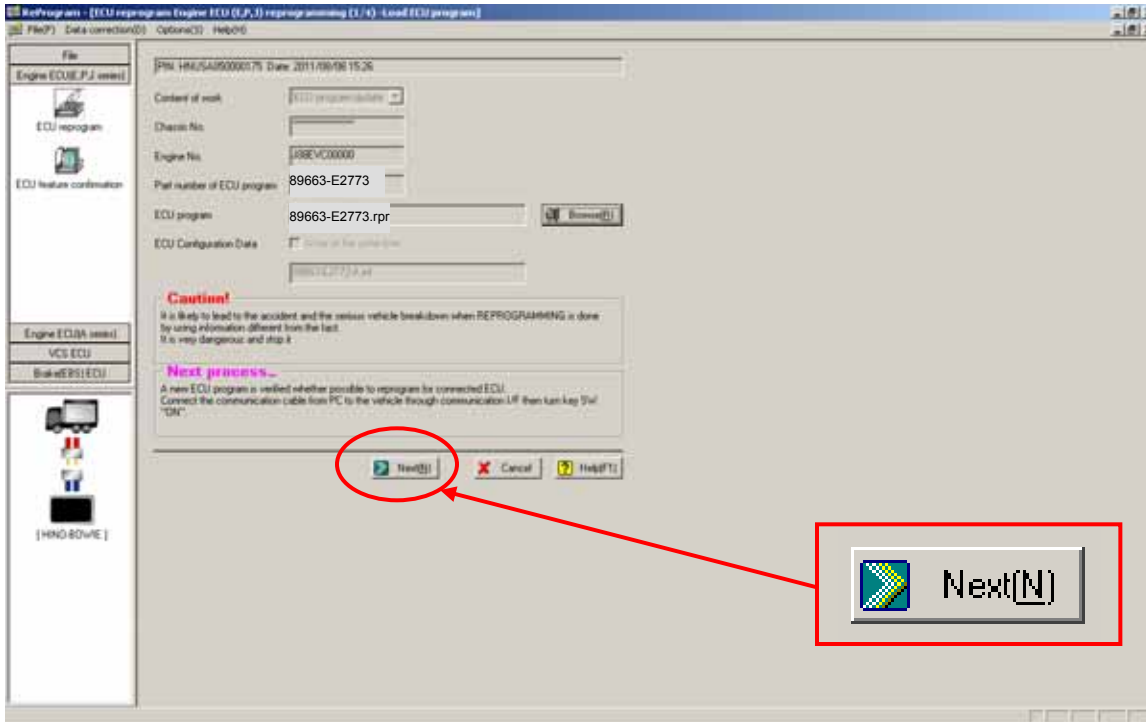
9. Once the “ECU_XXXXXXXXX.rpr” file has been selected from your computer, the ECU program name should appear next to “ECU Program”.



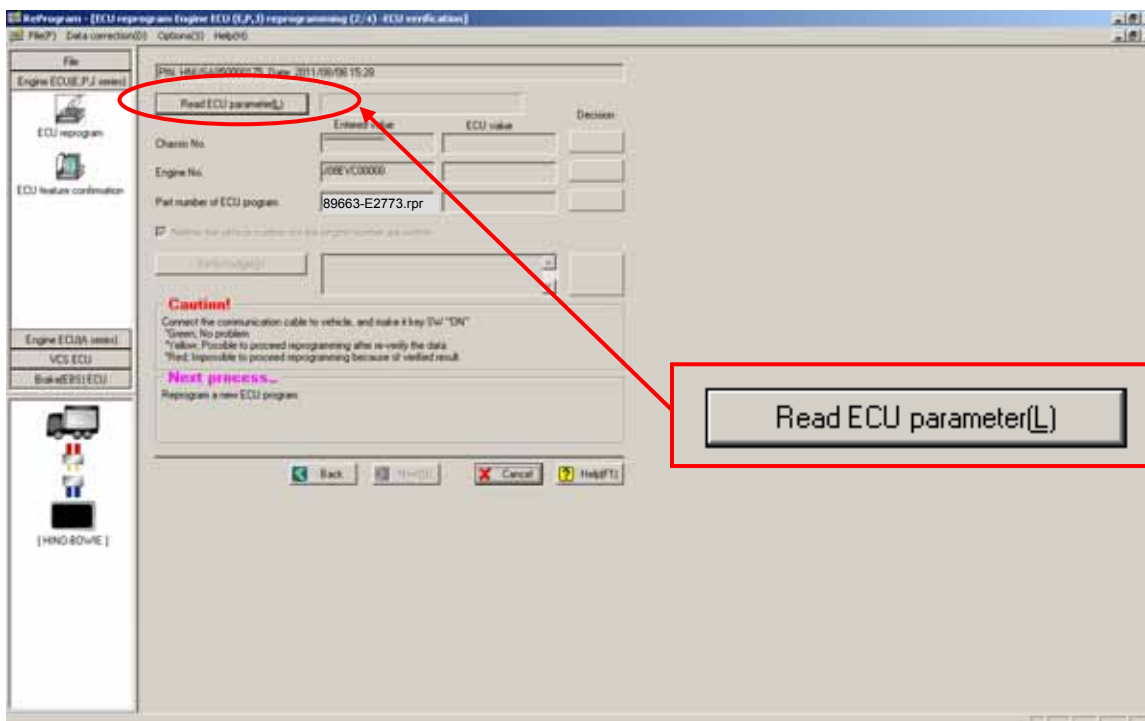
NOTE: The ECU .rpr file part number will vary dependent upon the ECU software version with which the vehicle was built. The photograph above references an ECU part number but is only an example of the file number you may see.

VOLUNTARY CAMPAIGN BULLETIN

10. Select the “Next (N)” icon.

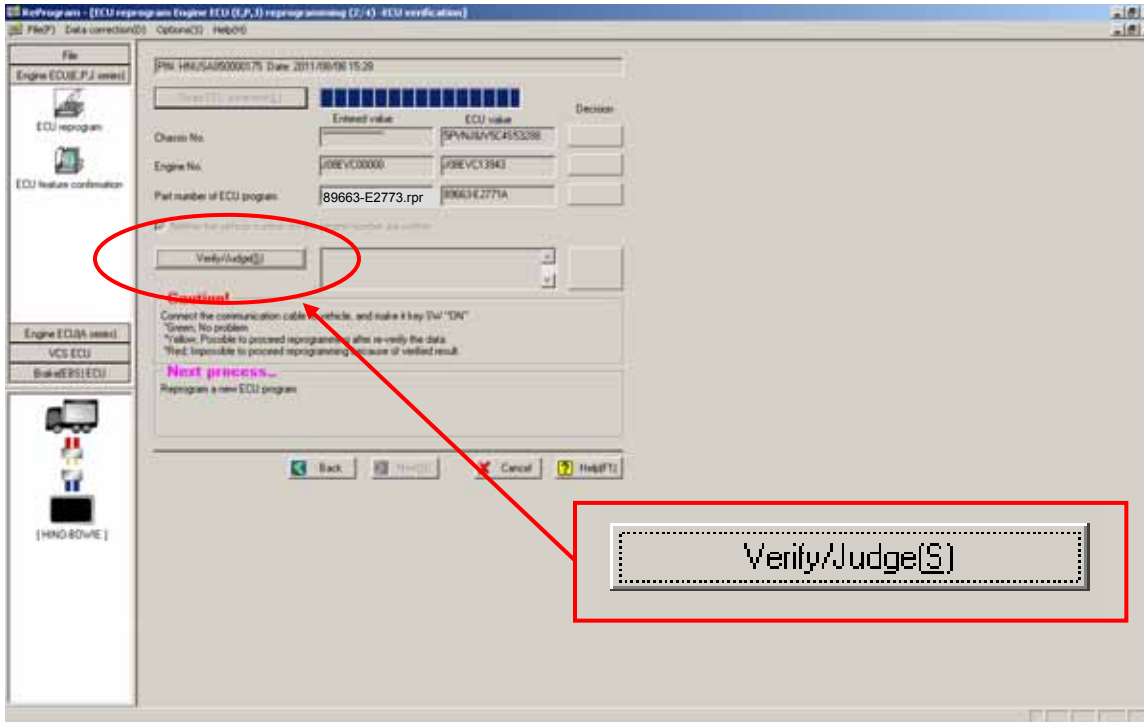


11. Select the “Read ECU Parameter (L)” icon.

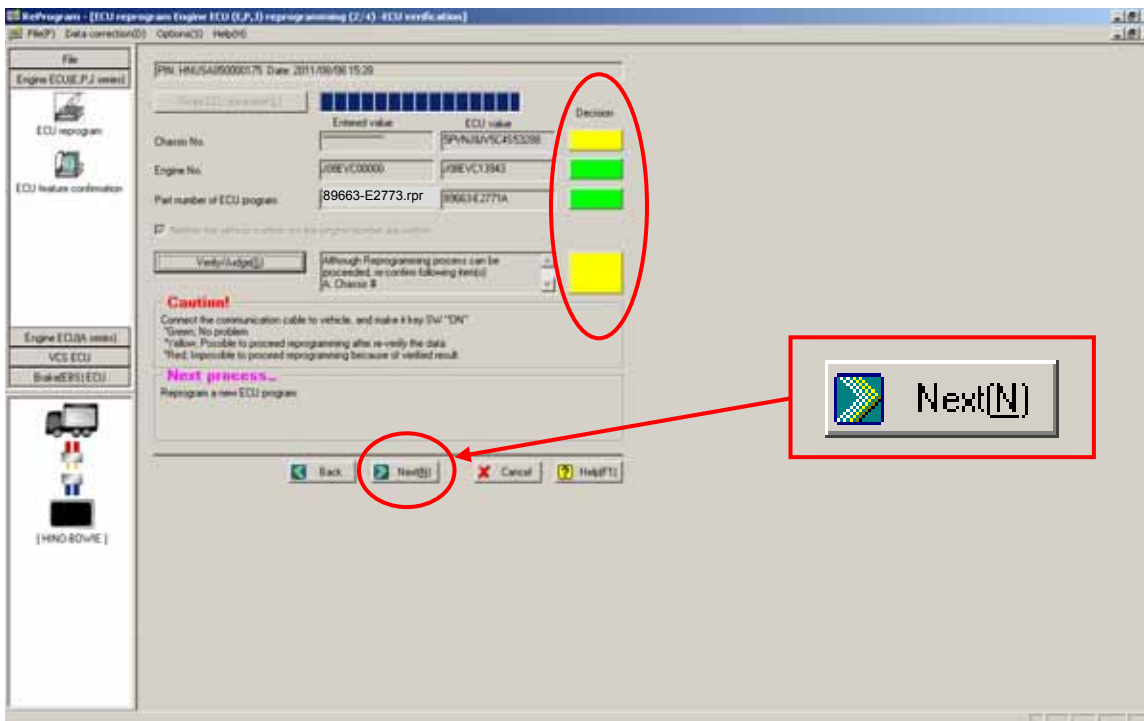


VOLUNTARY CAMPAIGN BULLETIN

12. Select the “Verify/Judge (S)” icon.



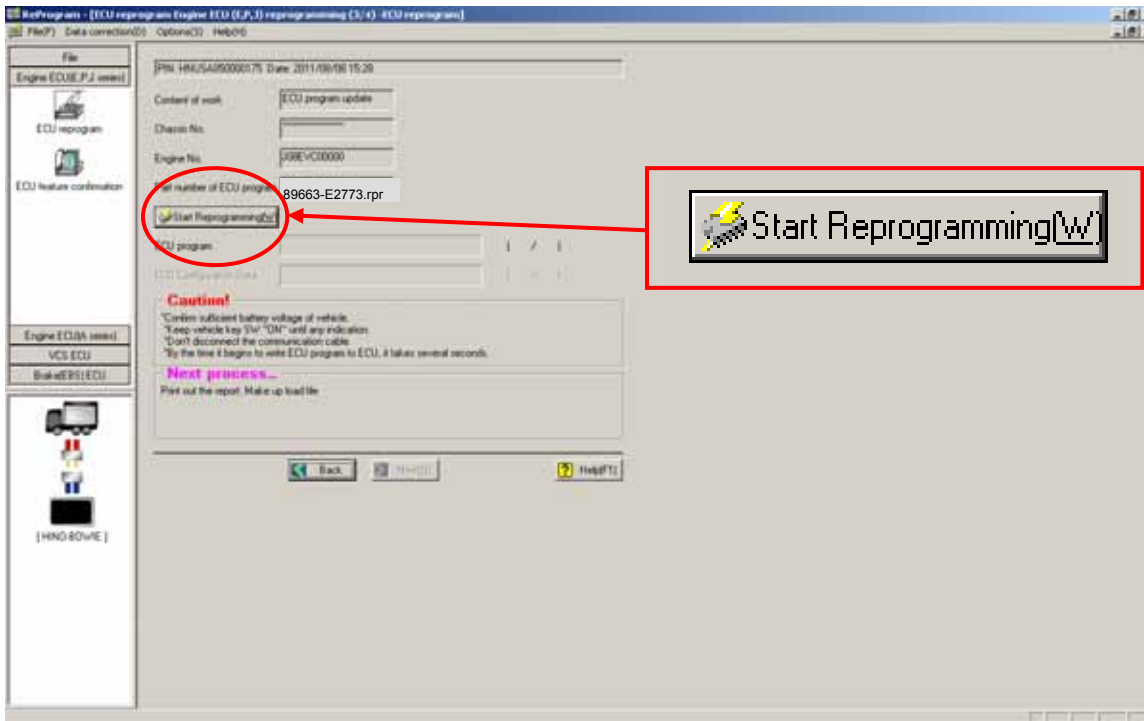
13. Select the “Next (N)” icon.



VOLUNTARY CAMPAIGN BULLETIN

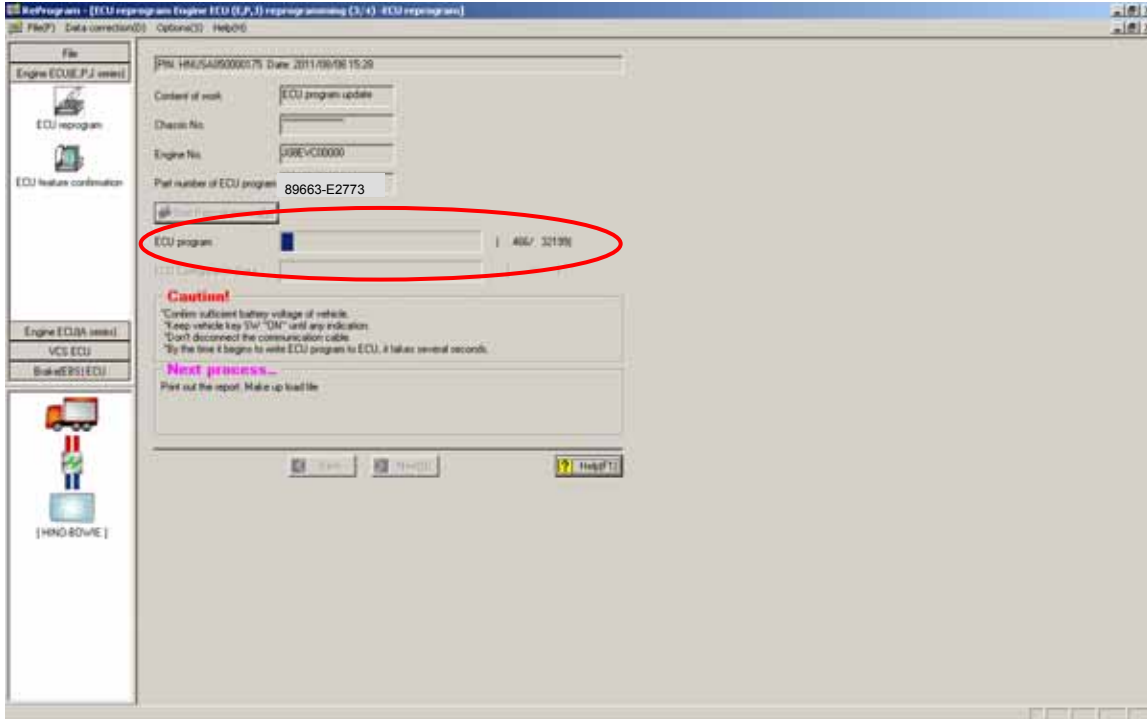
NOTE: To reprogram the ECU, the colors green or yellow must appear in all the “Decision” boxes. If you receive a red colored box for a “Decision”, the ECU cannot be programmed. Check to insure you have the correct ECU_XXXXXXXX.rpr file uploaded to the reprogram manager.

14. Select the “Start Reprogramming (W)” icon.

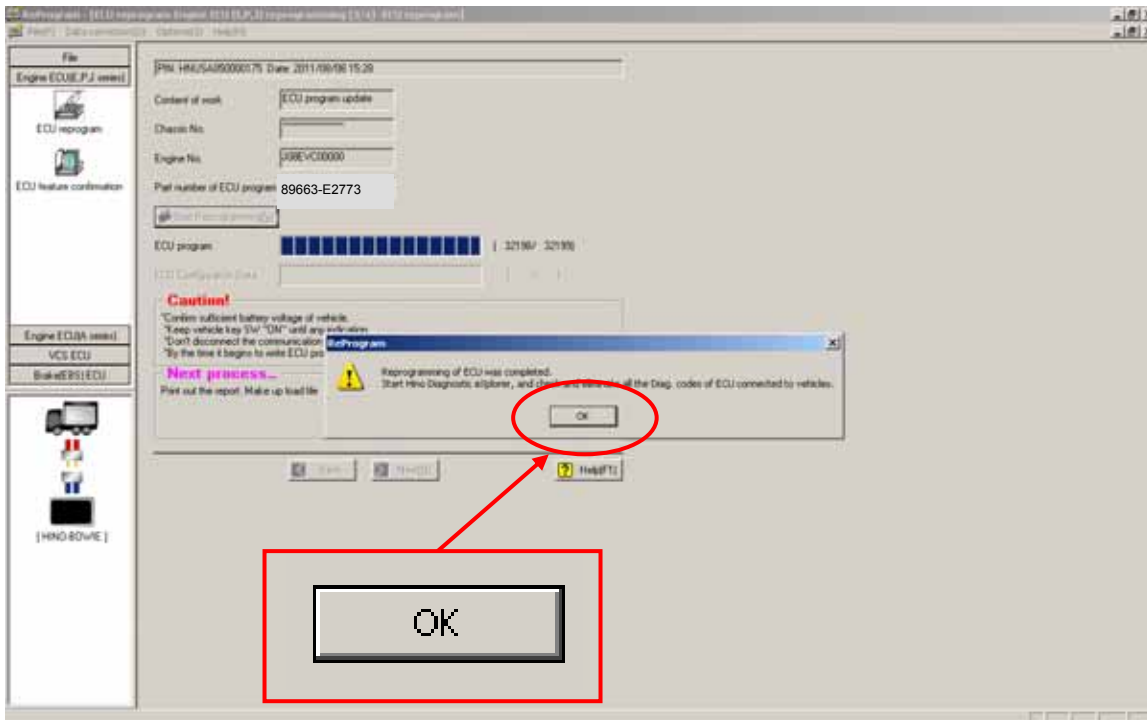


VOLUNTARY CAMPAIGN BULLETIN

15. The ECU programming will take approximately 15 minutes to complete

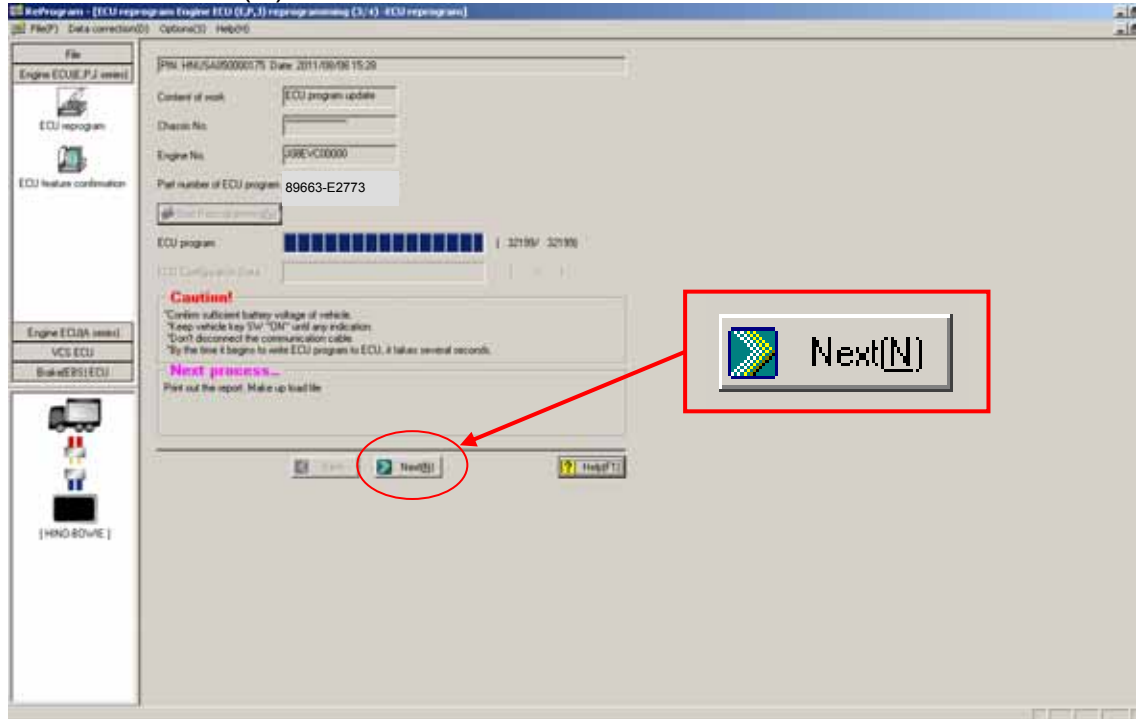


16. Select the "OK" icon.

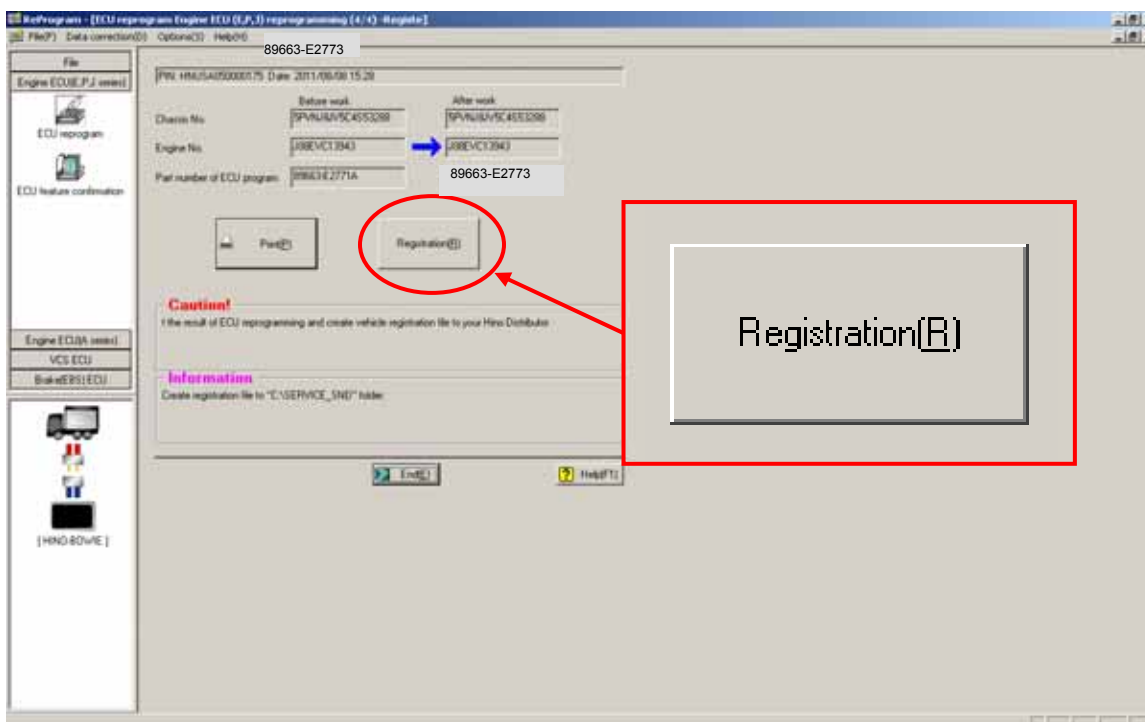


VOLUNTARY CAMPAIGN BULLETIN

17. Select the “Next (N)” icon.

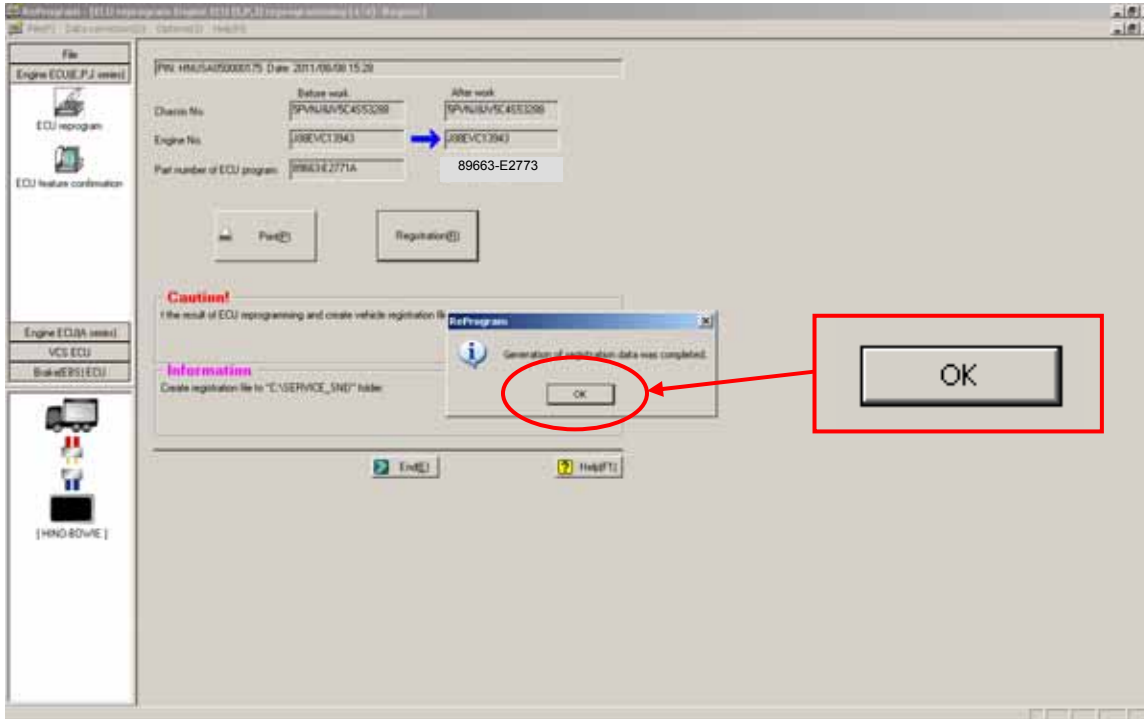


18. Select the “Registration (R)” icon.

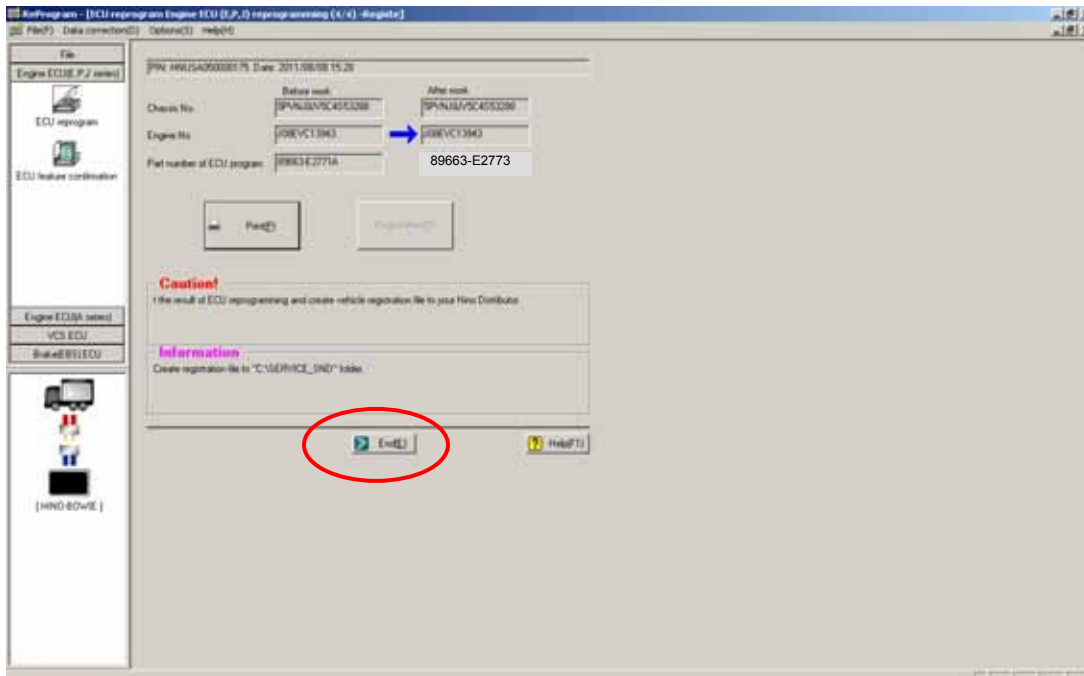


VOLUNTARY CAMPAIGN BULLETIN

19. Generation of the registration data is complete. Select the “OK” icon



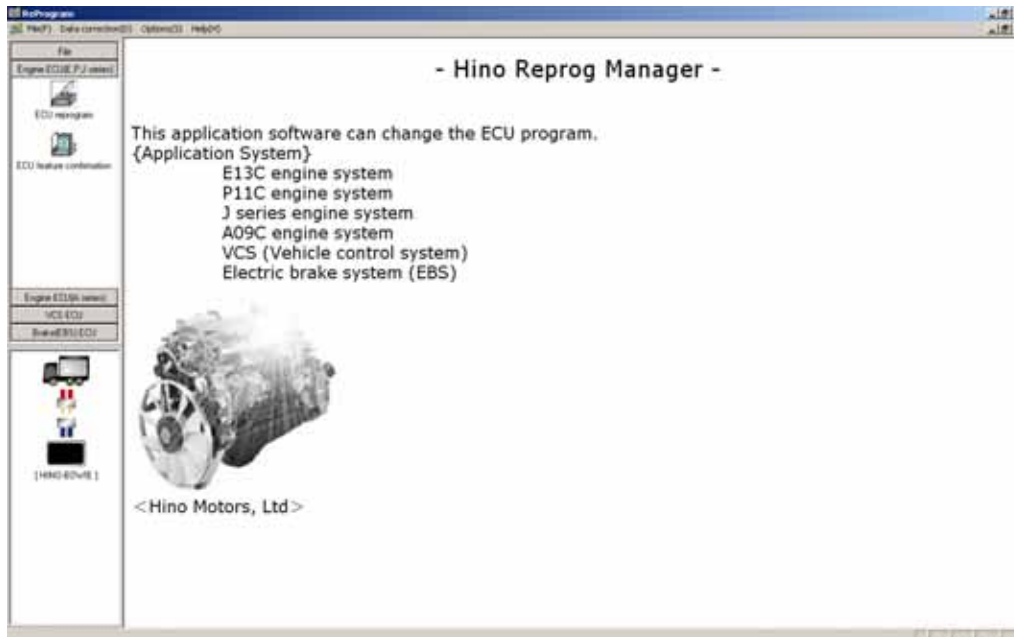
20. ECU reprogramming is complete. Select the “End (E)” icon.



VOLUNTARY CAMPAIGN BULLETIN

NOTE: Upload inf file onto HinoNet

21. The “Hino Reprogram Manager” will return to its main menu and then it can be closed.



VOLUNTARY CAMPAIGN BULLETIN

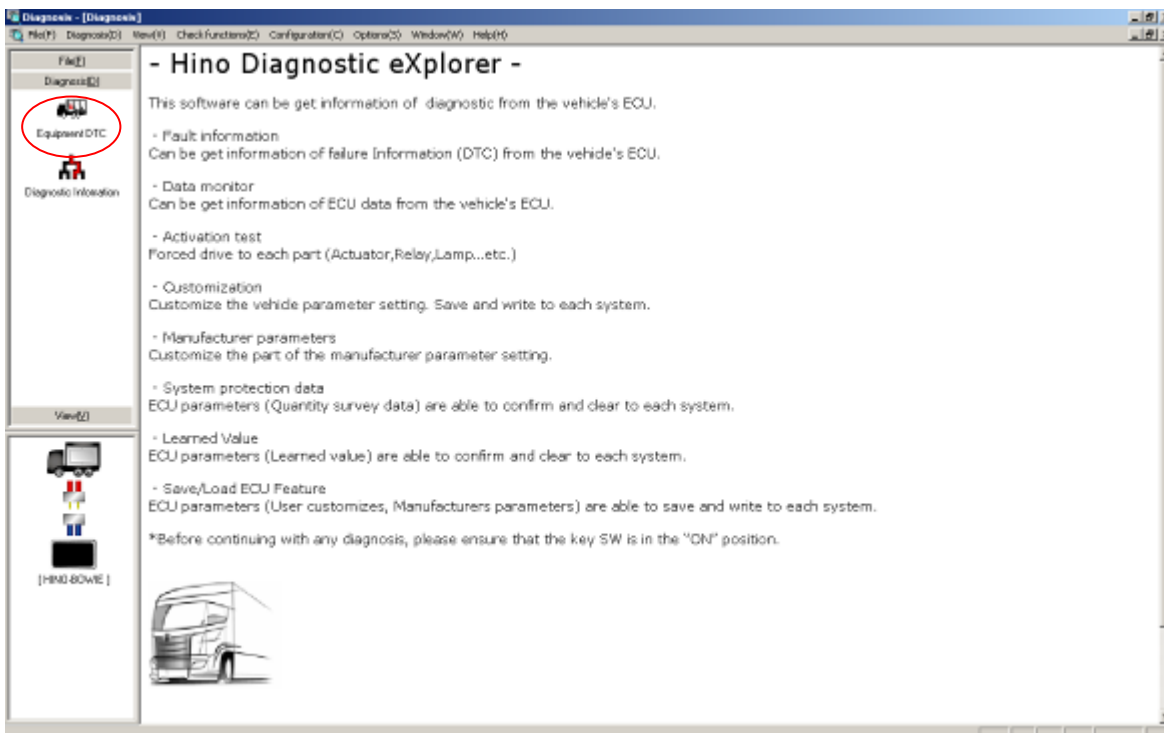
22. On your computer, locate the “Hino Diagnostic eXplorer” icon and open it.



23. The Hino Diagnostic Explorer will prompt you for a password. Enter your password and then select the “OK” icon.

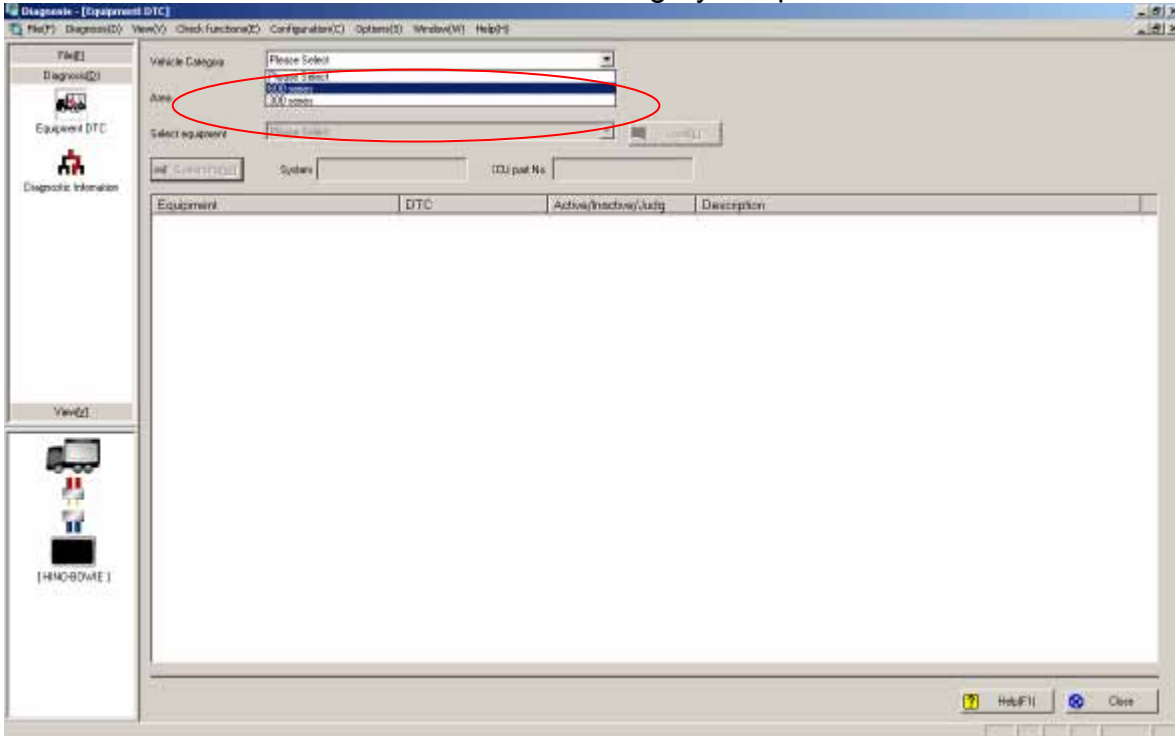


24. Select the “Equipment DTC” icon.

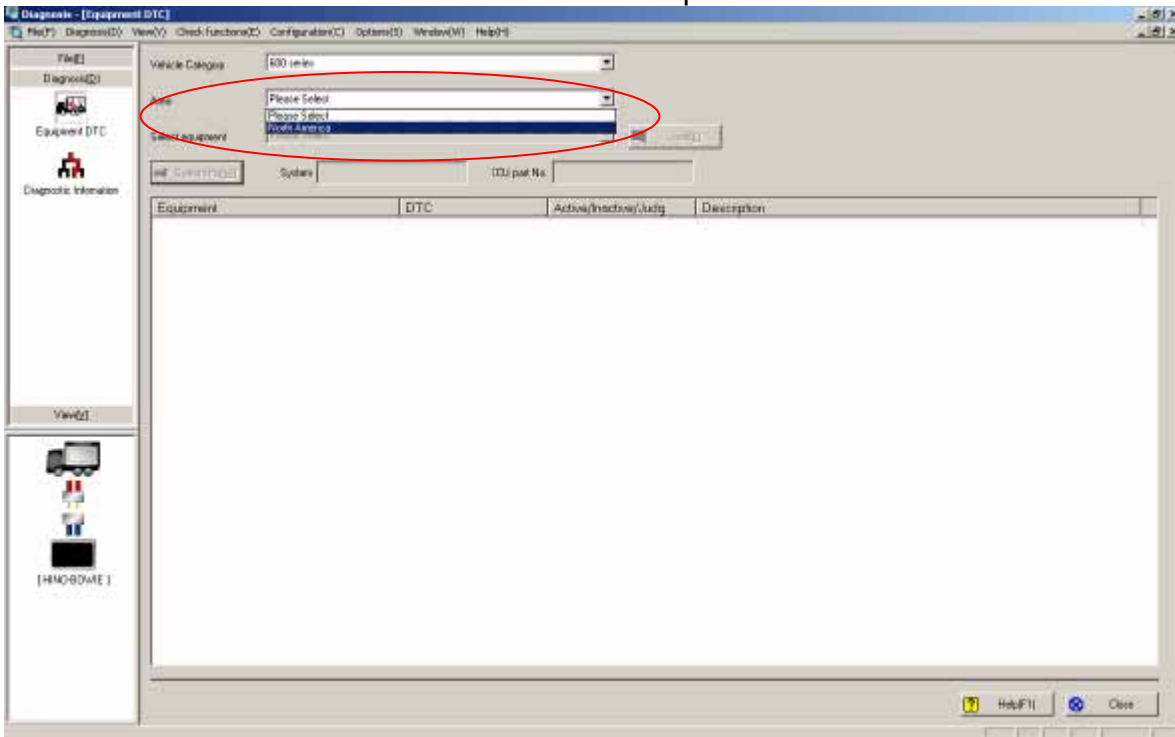


VOLUNTARY CAMPAIGN BULLETIN

25. Select “600 Series” from the “Vehicle Category” drop down menu.

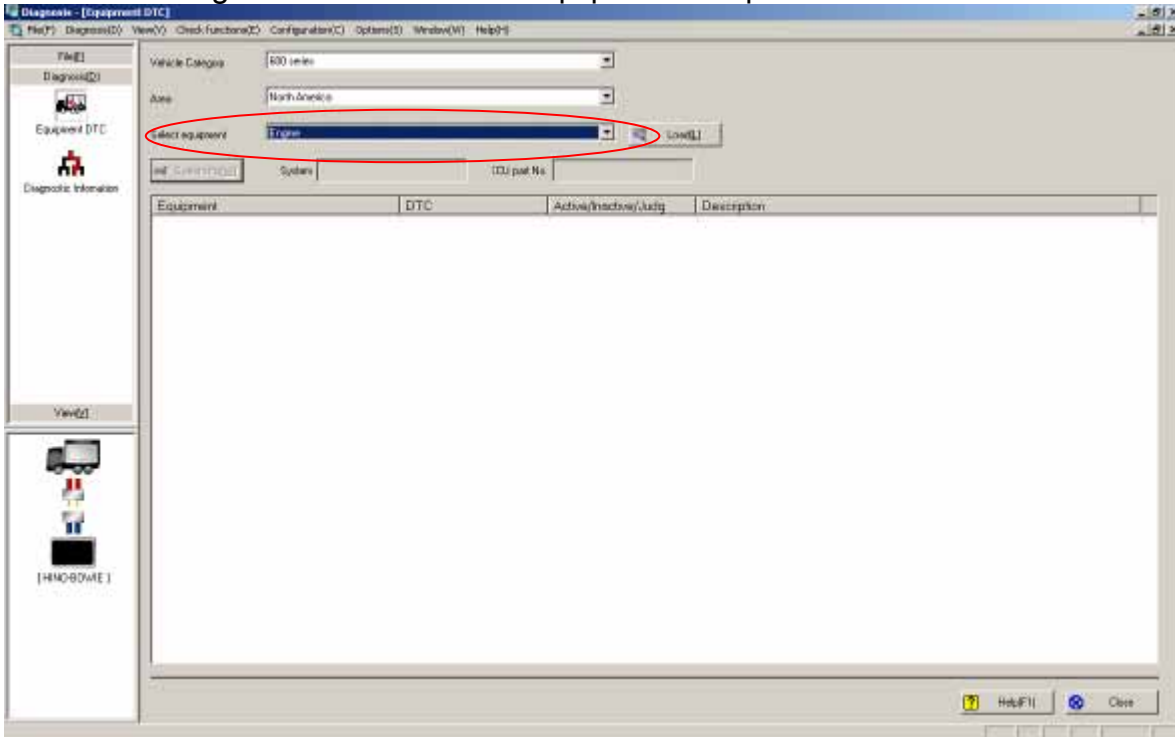


26. Select “North America” from the “Area” drop down menu.

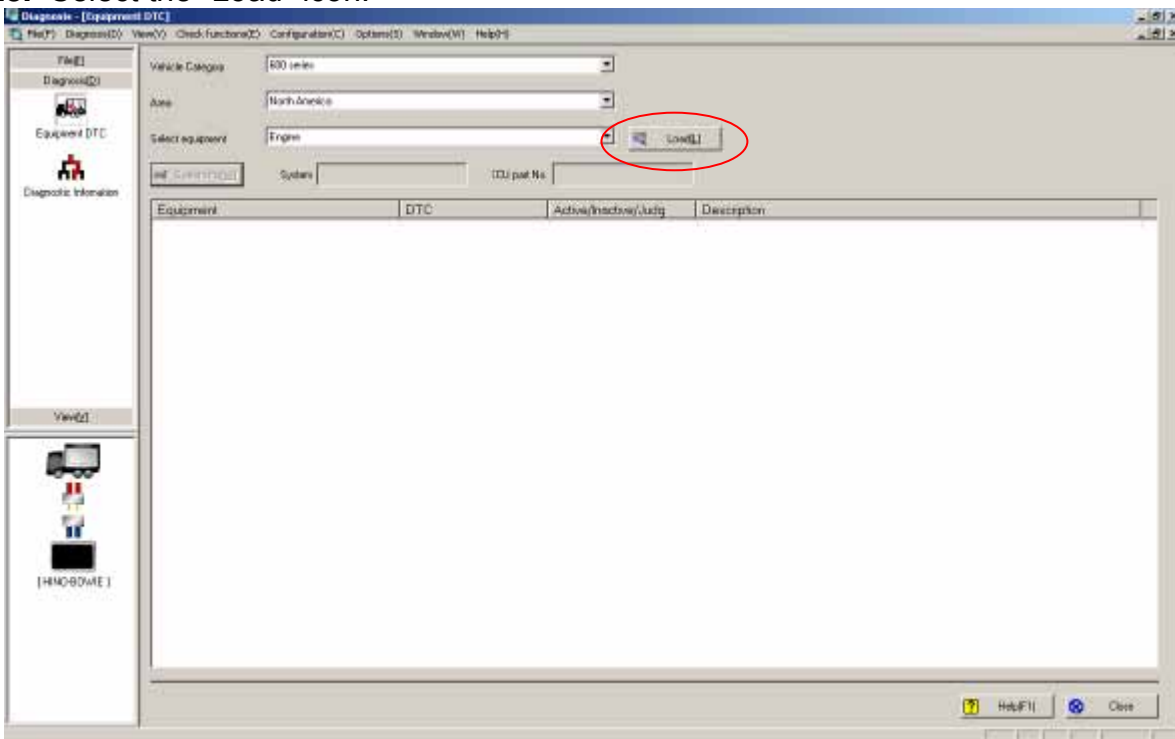


VOLUNTARY CAMPAIGN BULLETIN

27. Select “Engine” from the “Select Equipment” drop down menu.

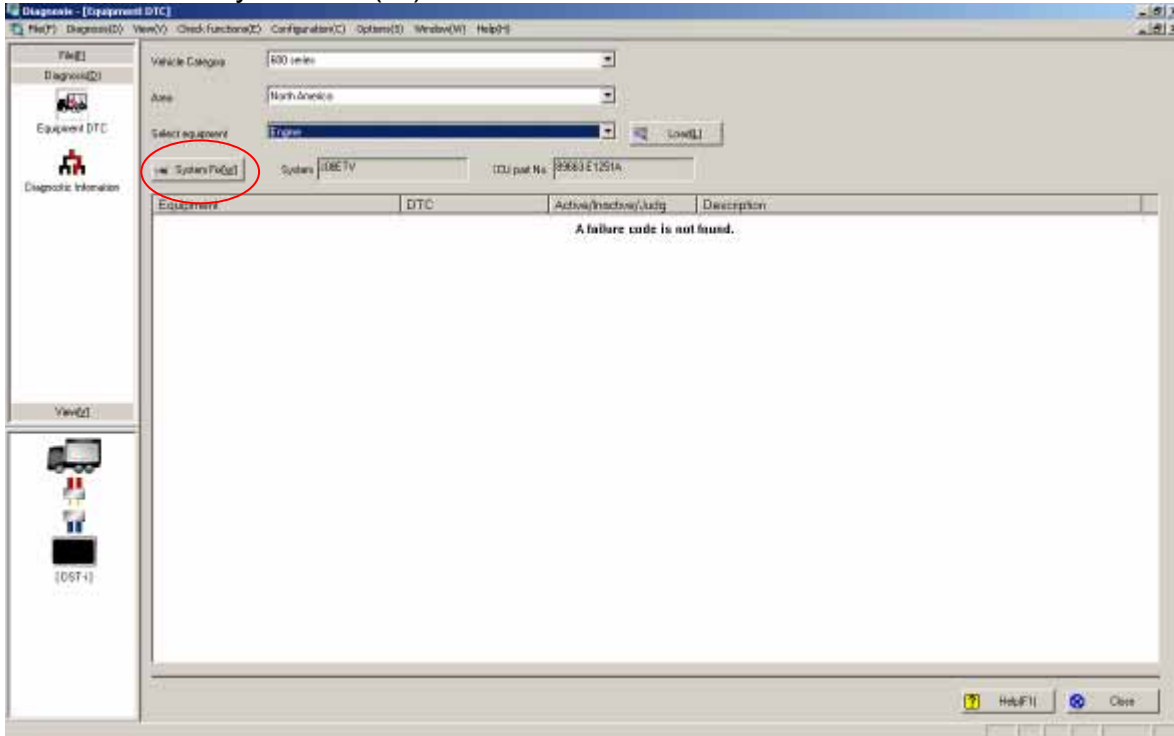


28. Select the “Load” icon.

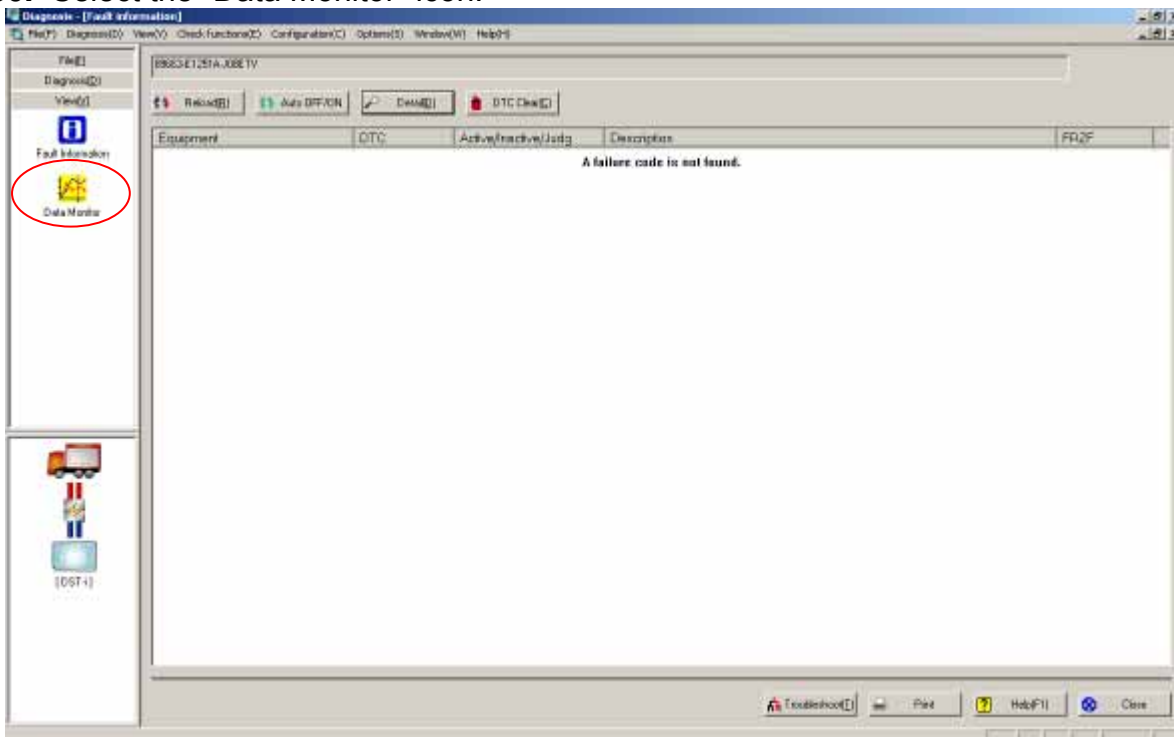


VOLUNTARY CAMPAIGN BULLETIN

29. Select the “System Fix(W)” icon.



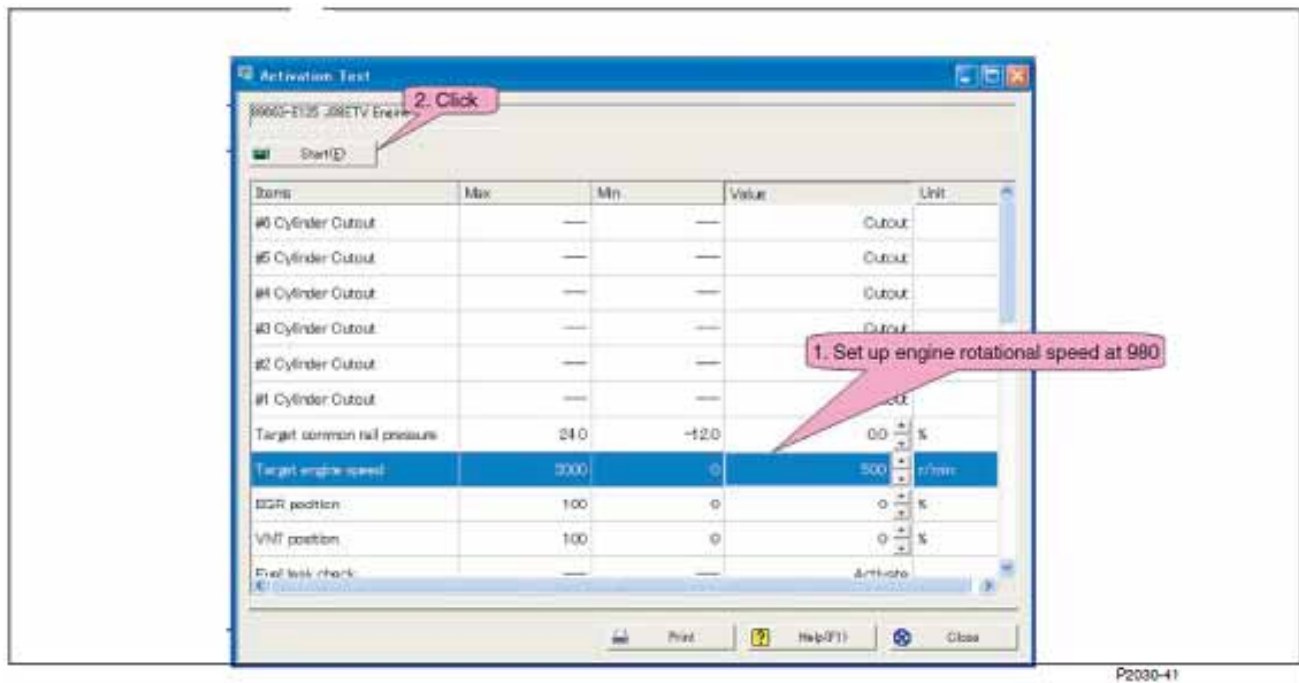
30. Select the “Data Monitor” icon.



VOLUNTARY CAMPAIGN BULLETIN

31. Check the Exhaust Brake Adjustment.

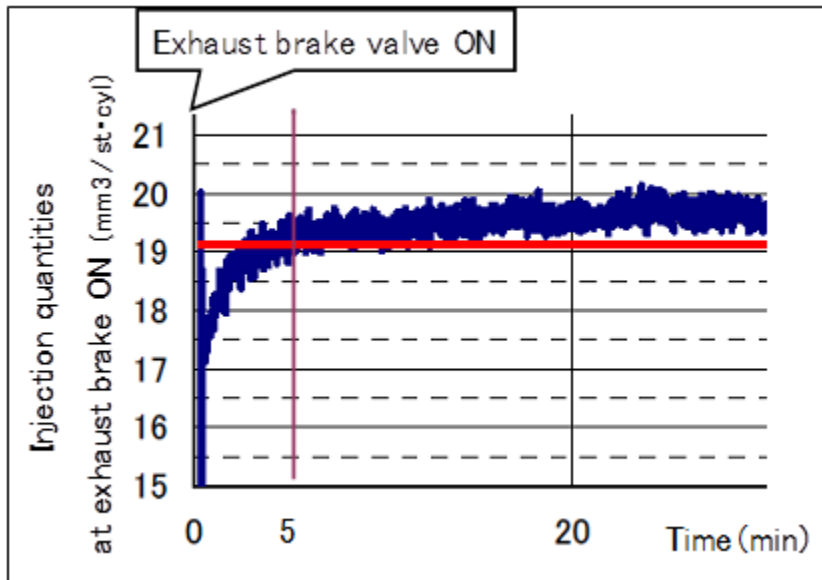
- 1) Start the engine.
- 2) Warm up the engine until the engine coolant temperature reaches 80°C {176°F} or greater.
- 3) Turn off the air conditioning and Power Take Off (PTO).
- 4) Go to “Activation Test” of Hino-DX.
- 5) First adjust the engine speed to 980 r/min by setting “980” in the Value box of “Target engine speed” as shown in the illustration below. Second click the “Start” button.



- 6) Turn on the exhaust brake switch located on the right side of the steering column and record injection quantity value from the data monitor.

VOLUNTARY CAMPAIGN BULLETIN

7) Turn the exhaust brake switch OFF, and then wait 5 minutes for the injection quantity to be stabilized. Once the injection quantity is stabilized record the injection quantity value using the data monitor.



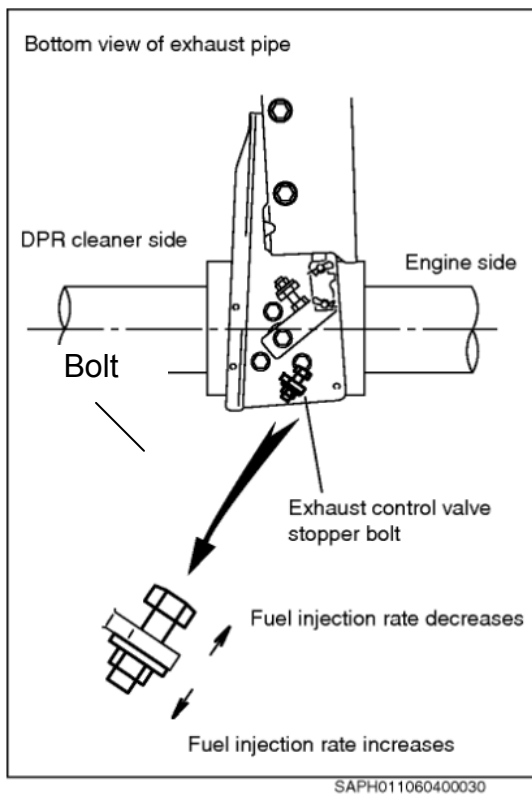
8) Is the difference between the recorded values within the 10 to 14 mm³/st specification?

If the difference is within 10 to 14 mm³/st, proceed to step **32**.

If the difference is not within the 10 to 14 mm³/st, adjust the injection quantity to be within the 10 to 14 mm³/st specification in accordance with the procedure in step 9, below.

VOLUNTARY CAMPAIGN BULLETIN

- 9)
- i) Clockwise adjustment of the stopper bolt increases the injection quantity, as shown in the illustration below.
 - ii) Counter-clockwise adjustment of the stopper bolt decreases the injection quantity, as shown in the illustration below.



- iii) After adjusting the stopper bolt repeat steps 1-9 to confirm the current injection quantity value.

Specification: 10 to 14mm³/st

VOLUNTARY CAMPAIGN BULLETIN

32. Turn the starter switch to the “LOCK” position and remove the key.



33. Proceed to the final inspection section to complete this campaign procedure.

FINAL INSPECTION:

To complete this campaign procedure, review the campaign and confirm the following:

- When reprogramming the ECU, DTC’s may have inadvertently been set. Using the “Hino Diagnostic Explorer”, insure all codes have been cleared from the Engine Control Unit (ECU), Burner Control Unit (BCU), Dosing Control Unit (DCU) and VCS prior to releasing the truck back to the customer.

CLAIM APPLICATION:

ECU Reprogramming:

- a) Campaign No: A8670
- b) Labor charge: Based on the following table.

Operation	Labor
Reprogram the ECU and inspect the exhaust brake.	.9
Reprogram the ECU, exhaust brake inspection and adjustment.	1.9

- c) Warranty code: 8631198
- d) Operation code: 86350AOT
- e) Original failed part: 9999999999

Note: to ensure payment of claim inf file must be uploaded onto Hinonet