

**Date:** 27/06/2013

**Subject:** GREASE APPLICATION ONTO CLUTCH CABLE

**Models:** *Hypermotard MY2013 (all country versions)*  
*Hypermotard SP MY2013 (all country versions)*  
*Hyperstrada MY2013 (all country versions)*

Dear Dealers,

we have found out that it is necessary to apply grease onto the cylindrical terminal of the clutch cable, at the clutch lever. This grants the cable a longer life.

The recommended types of grease are **Shell Retinax LX 2** or **Shell Retinax HD2**.



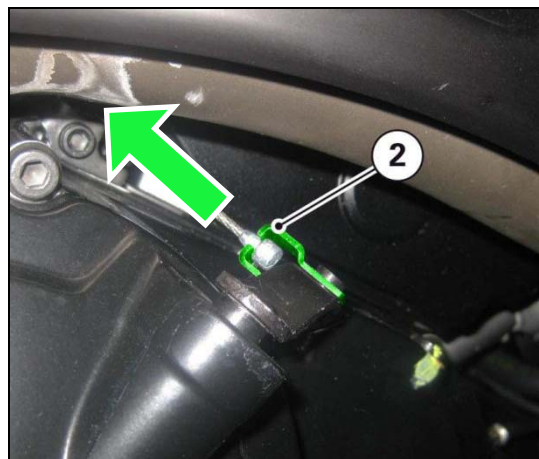
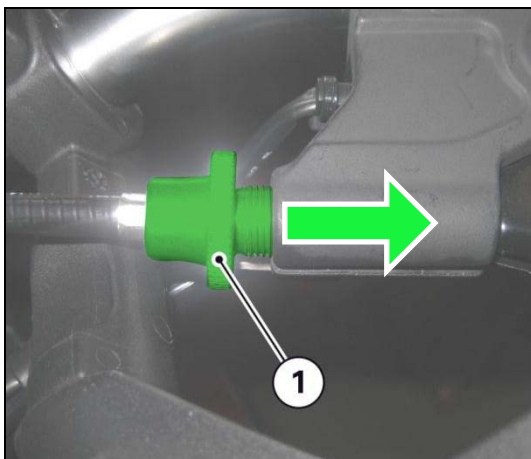
**CAUTION**

**Carry out this operation at the first periodic OIL SERVICE 1000 and after that at each operation of scheduled maintenance performed on the motorbike.**

Proceed according to the sequence described below:

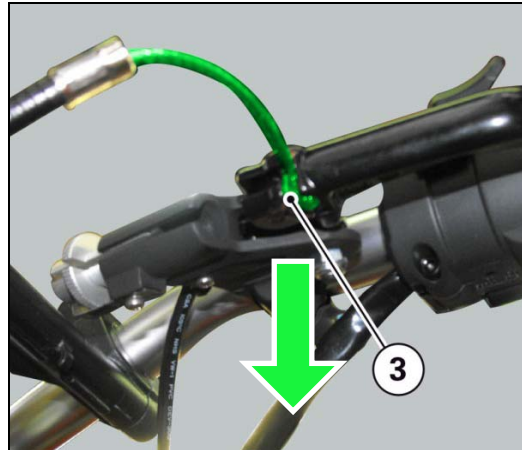
- Tighten adjusting screw **(1)** fully home on clutch lever.

Release the cable from retainer **(2)** at the clutch control on the crankcase.

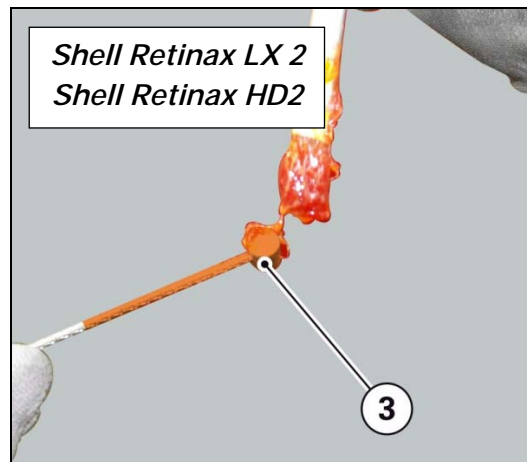


- Slide out the cylindrical terminal **(3)** of the clutch cable from the lever and carefully check the integrity of all cables.

If you experience any problems with the component, fill in a Quality Report or a Service Request in **YouTech**.



- Then apply the specified grease on the cylindrical terminal of the clutch cable in the area shown in the figure.



- Refit the cylindrical terminal (3) of the clutch cable on the lever.
- Secure the retainer (2) near the clutch control on the crankcase.
- Restore the correct tensioning of the clutch cable.

Best Regards,

Luca Crucianelli  
Service Technical Specialist

Francesco Penazzo  
Service Aftersales Manager