



Service Bulletin

PRELIMINARY INFORMATION

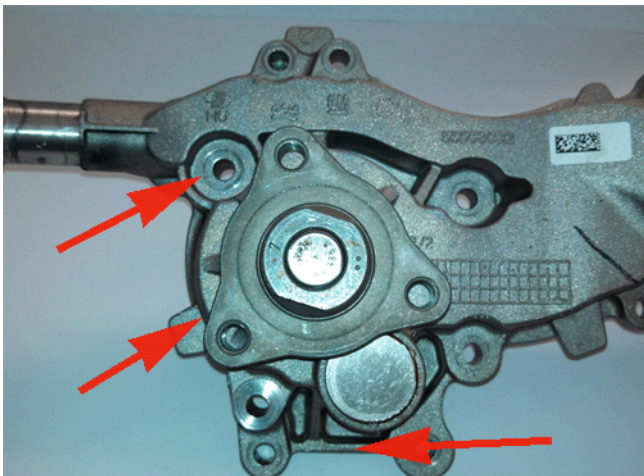
Subject: Information on Water Pump Replacement

Models: 2013-2014 Buick Encore
2011-2014 Chevrolet Cruze
2012-2014 Chevrolet Sonic
2013-2014 Chevrolet Trax
All with Engine RPO LUJ, LUV

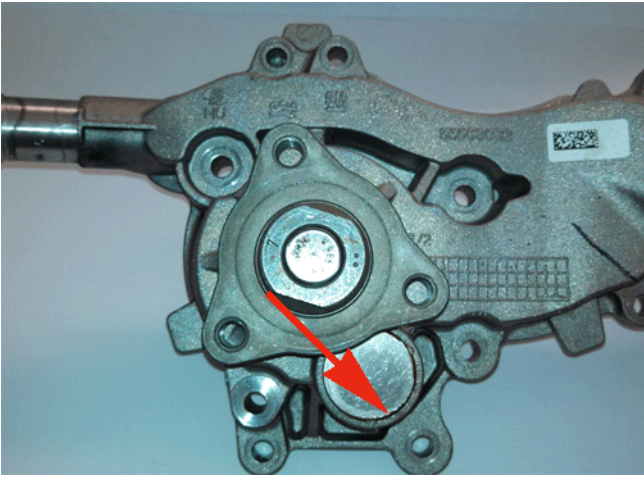
The water pump is one area that is normal to get some seepage at the bearing shaft seal. The water pump has a reservoir that collects the coolant seeping from the front seal and allows it to evaporate off. The reservoir plug may not be sealed, allowing some coolant to seep past the plug giving the appearance of a coolant leak due to the staining of coolant around the plug. If the water pump is not leaving a trail of coolant going down the front of the engine nothing further should be done.

Normal Water Pump Appearance (Do Not Replace Pump)

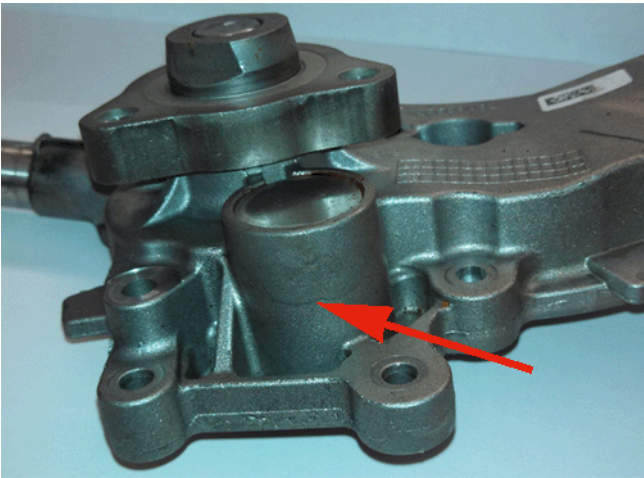
If the water pump housing shows minimal coolant deposits as shown below, do not replace the pump. The water pump is functioning as designed.



- No evidence of coolant leakage on the pump body.



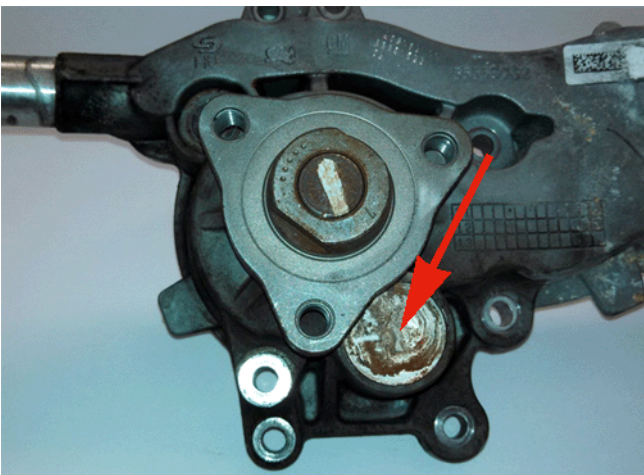
- Slight coolant staining around the perimeter of the cover plate.



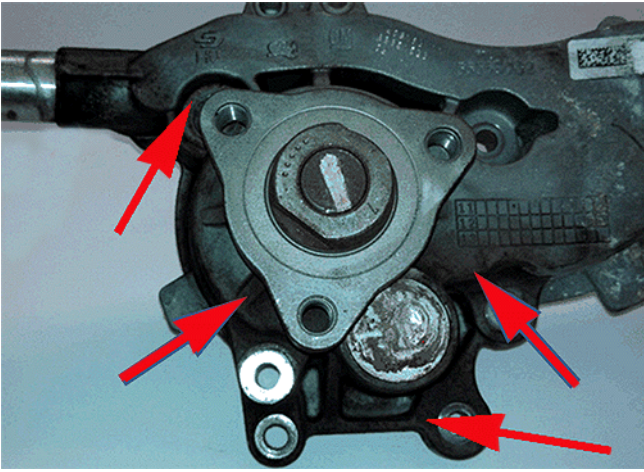
- Slight coolant staining on the underside of the housing.

Excessive Water Pump Coolant Deposits (Replace Pump)

If the pump housing displays excessive evidence of leaking as shown below, replace the pump. Refer to Water Pump Replacement in SI.



- Significant coolant residue on the cover plate.

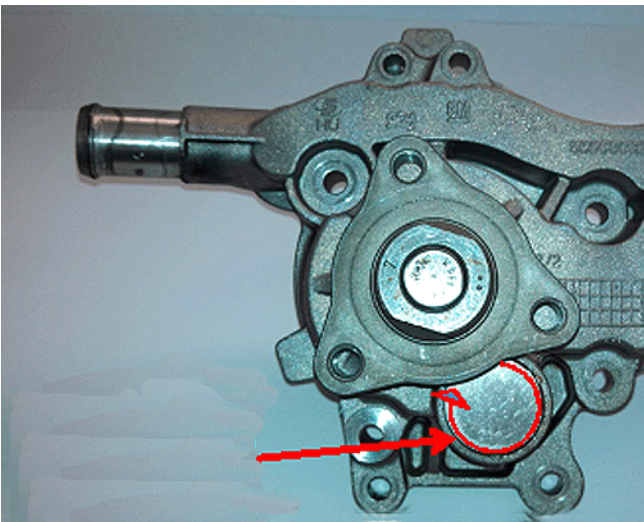


- Evidence of coolant residue on the exterior surfaces of the pump housing.

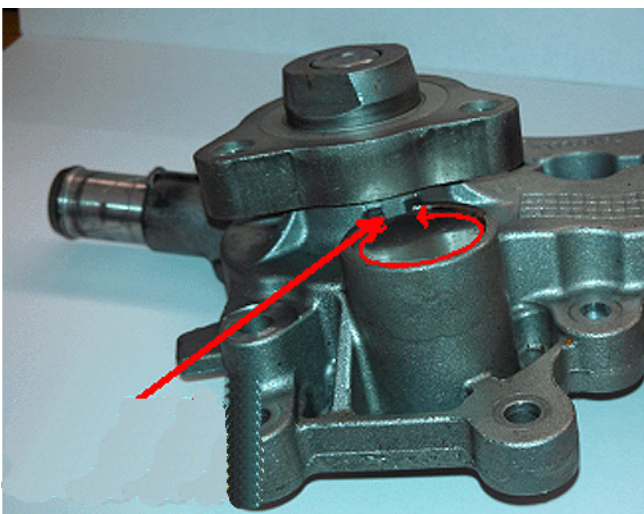
Additional Steps When Replacing the Water Pump

When installing a new replacement water pump, the reservoir cover should be sealed before installation using this procedure.

1. Use GM Low VOC Brake Parts Cleaner, P/N 19287401 (in Canada, P/N 88901247) or an equivalent, to clean the area around the cup plug on the replacement pump assembly.
2. Dry the area with compressed air.

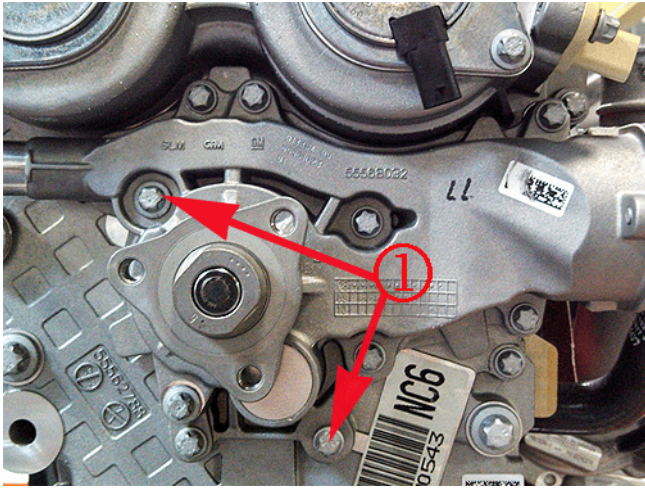


3. Apply a small bead of RTV Engine Sealant, P/N 88861417 (in Canada, P/N 88861418) to the seam around the perimeter of the reservoir cup plug. Be careful to avoid plugging the small hole at the top of the reservoir with the sealant. This evaporation hole must be left open.



4. Use a clean scraper to work the sealer into the cup plug gap and to scrape off any excess leaving a thin layer to seal the cup plug.

When replacing the water pump, install the 5 water pump bolts and the 5 engine front cover bolts and tighten in a cross sequence to 8Y (71 lb in) as instructed in SI.



Tighten these two fasteners an additional 30 degrees (1).

GM bulletins are intended for use by professional technicians, NOT a "do-it-yourselfer". They are written to inform these technicians of conditions that may occur on some vehicles, or to provide information that could assist in the proper service of a vehicle. Properly trained technicians have the equipment, tools, safety instructions, and know-how to do a job properly and safely. If a condition is described, DO NOT assume that the bulletin applies to your vehicle, or that your vehicle will have that condition. See your GM dealer for information on whether your vehicle may benefit from the information.



WE SUPPORT VOLUNTARY TECHNICIAN CERTIFICATION