



# Service Bulletin

## PRELIMINARY INFORMATION

**Subject:** Front Driver Or Passenger Seat Cover / Cushion Loose

**Models:** 2014 Chevrolet Silverado 1500  
2014 GMC Sierra 1500

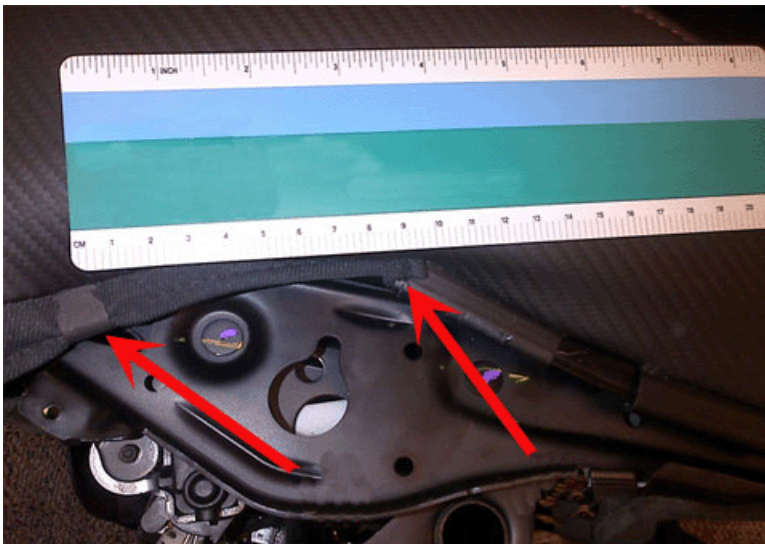
The following diagnosis might be helpful if the vehicle exhibits the symptom(s) described in this PI.

### Condition/Concern

Some customers may comment that the front driver's or passenger's seat cover/cushion is loose.

### Recommendation/Instructions

To correct this issue, install U-clips to help secure the cover to the seat frame. Use a U-Clip on the inboard and outboard side of the seat (2 clips per seat), as shown below - with the clip to be installed approximately 9 cm away from the right arrow seat frame location. After the U-clips are installed, crimp each clip with pair of pliers to secure.



### Parts Information

At this time the U-Clips will be ordered through the Warranty Parts Center (WPC). Complete the WPC parts request form found below. Please use WPC part number WPC726 when ordering the clips.

**Note:** 8 clips will be shipped per request.

To ensure full page print do not adjust size, select magnifying glass to enlarge then print

**WPC Parts Request Form**

Use this form ONLY for U.S. & Canada Dealers. Export markets & Mexico Dealers must contact their regional Technical Assistance Center for assistance.

To: Warranty Parts Center  
"E-Mail" warrantypartscenterusa@gm.com  
or WPC Fax #: 248-371-0192

Attn: Amina Winfrey

Part Being Requested:

(1)WPC #                      Quantity \_\_\_\_

(2)WPC #                      Quantity \_\_\_\_

(3)WPC #                      Quantity \_\_\_\_

(4)WPC #                      Quantity \_\_\_\_

Dealer BAC (U.S.) / Dealer Code (Canada):

Dealer Name:

Dealer Address:

Dealer Contact Person:

Dealer Phone Number:

Repair Order Number:

Vehicle VIN:

If you do not receive the part within 2 business days after emailing or faxing your part request to the Warranty Parts Center, please call Customer Assistance at 248-371-9901/9902

To ensure full page print do not adjust size, select magnifying glass to enlarge then print

**Warranty Information**

For vehicles repaired under warranty use:

Labor Operation	Description	Labor Time
7080018*	Install U Clips to Secure Seat Cover (One Seat)	0.9 hr
Add	Additional Seat	0.9 hr
* This is a unique labor operation for bulletin use only. This will not be published in the Labor Time Guide.		

Please follow this diagnostic or repair process thoroughly and complete each step. If the condition exhibited is resolved without completing every step, the remaining steps do not need to be performed.

GM bulletins are intended for use by professional technicians, NOT a "do-it-yourselfer". They are written to inform these technicians of conditions that may occur on some vehicles, or to provide information that could assist in the proper service of a vehicle. Properly trained technicians have the equipment, tools, safety instructions, and know-how to do a job properly and safely. If a condition is described, DO NOT assume that the bulletin applies to your vehicle, or that your vehicle will have that condition. See your GM dealer for information on whether your vehicle may benefit from the information.



WE SUPPORT VOLUNTARY TECHNICIAN CERTIFICATION