



# Service Bulletin

## PRELIMINARY INFORMATION

**Subject:** Diagnostic Tip - Traction And Stability Control Indicator On With Code C0131 Set After BPMV Replacement

**Models:** 2012 - 2014 Chevrolet Sonic

*This PI was superseded to update model years and subject line. Please discard PIC5704.*

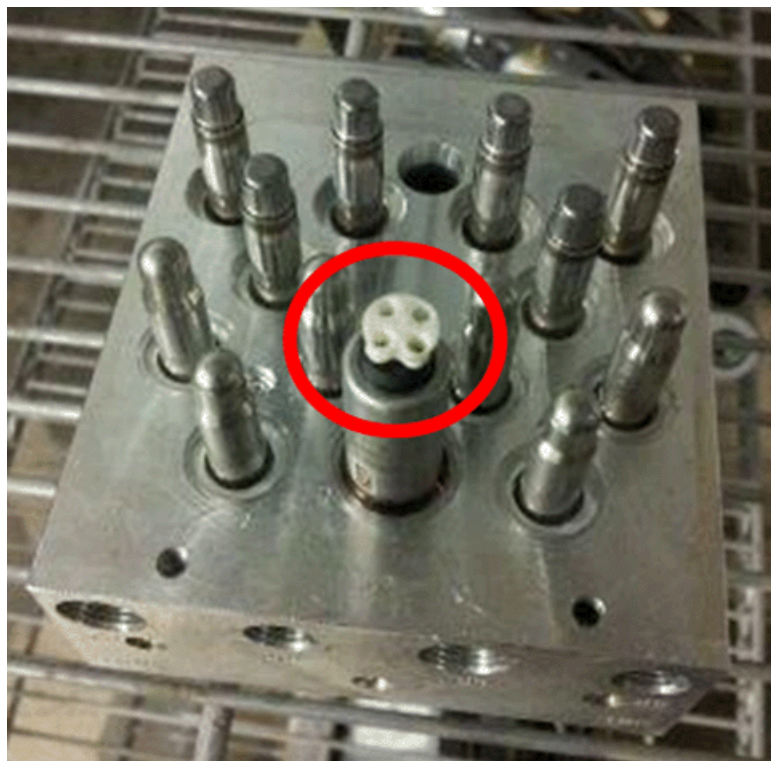
The following diagnosis might be helpful if the vehicle exhibits the symptom(s) described in this PI.

### Condition/Concern

A technician may run into a scenario where the BPMV (Brake Pressure Modulator Valve) has been replaced and now they have code C0131 set current and there is a Service Traction and/or Stability Control message on in the IPC. During diagnosis the technician may notice that the brake pressure sensor voltage is reading 5 volts at all times with brake pedal released or depressed.

### Recommendation/Instructions

Technicians are advised to remove BPMV assembly and inspect the brake pressure sensor assembly and make sure all shipping material has been removed before installation. If shipping material is not removed, this will cause code C0131 to set, and or possibly cause damage to both the EBCM and the BPMV. Please reference the following photo.



Please follow this diagnostic or repair process thoroughly and complete each step. If the condition exhibited is resolved without completing every step, the remaining steps do not need to be performed.

occur on some vehicles, or to provide information that could assist in the proper service of a vehicle. Properly trained technicians have the equipment, tools, safety instructions, and know-how to do a job properly and safely. If a condition is described, DO NOT assume that the bulletin applies to your vehicle, or that your vehicle will have that condition. See your GM dealer for information on whether your vehicle may benefit from the information.



WE SUPPORT VOLUNTARY TECHNICIAN CERTIFICATION