



Service Bulletin

PRELIMINARY INFORMATION

Subject: SES Lamp due to DTC P0016 Setting

Models: 2012 2013- Cadillac CTS-V, Escalade Models
2012-2013- Chevrolet Avalanche, Caprice, Camaro, Express, Silverado, Suburban, Tahoe
2012 2013- GMC Savana, Sierra Models, Yukon Models
with engine RPOs L20 L9H L94 LSA LC9 LMG LS3 L77

The following diagnosis might be helpful if the vehicle exhibits the symptom(s) described in this PI.

Condition/Concern

A vehicle may come in with a DTC P0016 setting and/or a crank no start, with no issue with the phaser or the wiring.

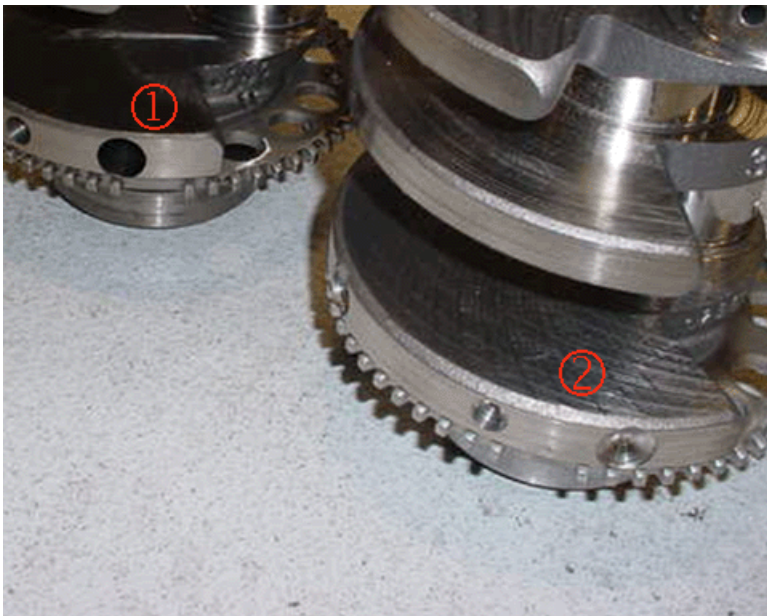
This is for vehicles built between 2/1/2012 - 2/12/2013.

Recommendation/Instructions

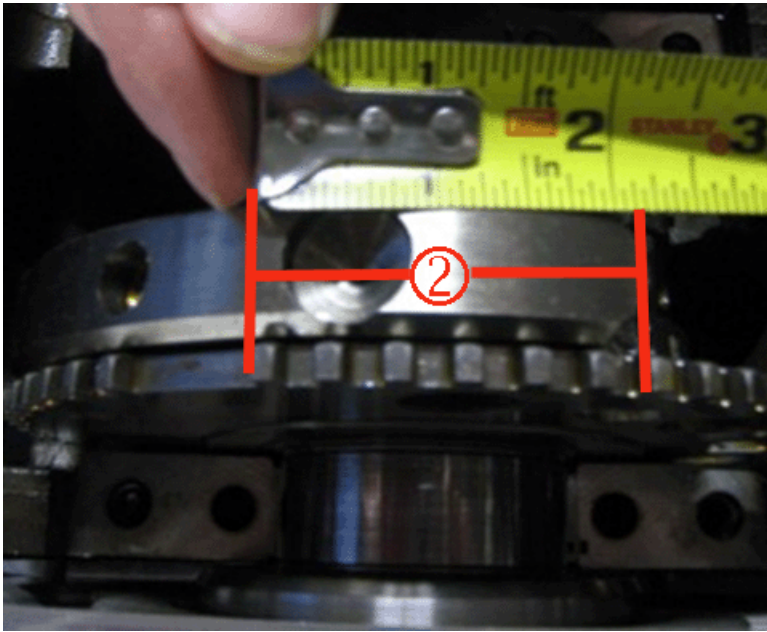
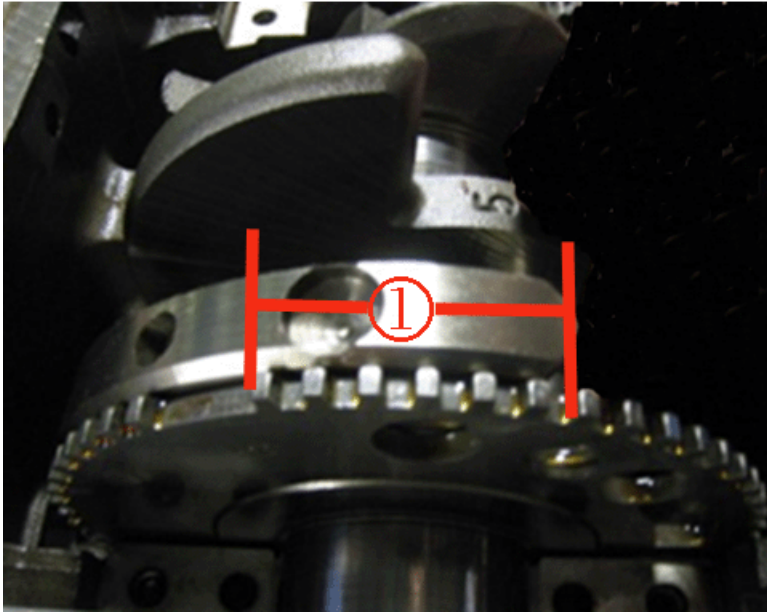
If the P0016 is setting and SI diagnosis does not isolate the concern.

Use the pictures below to determine if the crankshaft reluctor has moved.

If you have verified the reluctor has moved, replace the Crankshaft.



1. Crankshaft with a moved reluctor
2. Crankshaft with the correct reluctor position



Warranty Information

For vehicles repaired under warranty use:

Labor Operation	Description	Labor Time
J1000	Oil Pan Replacement	Use Published Labor Operation Time
J1200	Crankshaft Replacement	Use Published Labor Operation Time

Please follow this diagnostic or repair process thoroughly and complete each step. If the condition exhibited is resolved without completing every step, the remaining steps do not need to be performed.

GM bulletins are intended for use by professional technicians, NOT a "do-it-yourselfer". They are written to inform these technicians of conditions that may occur on some vehicles, or to provide information that could assist in the proper service of a vehicle. Properly trained technicians have the equipment, tools, safety instructions, and know-how to do a job properly and safely. If a condition is described, DO NOT assume that the bulletin applies to your vehicle, or that your vehicle will have that condition. See your GM dealer for information on whether your vehicle may benefit from the information.



WE SUPPORT VOLUNTARY TECHNICIAN CERTIFICATION