



# Service Bulletin

## PRELIMINARY INFORMATION

**Subject:** Water On Floor And/Or Carpet

**Models:** 2013 Chevrolet Malibu

The following diagnosis might be helpful if the vehicle exhibits the symptom(s) described in this PI.

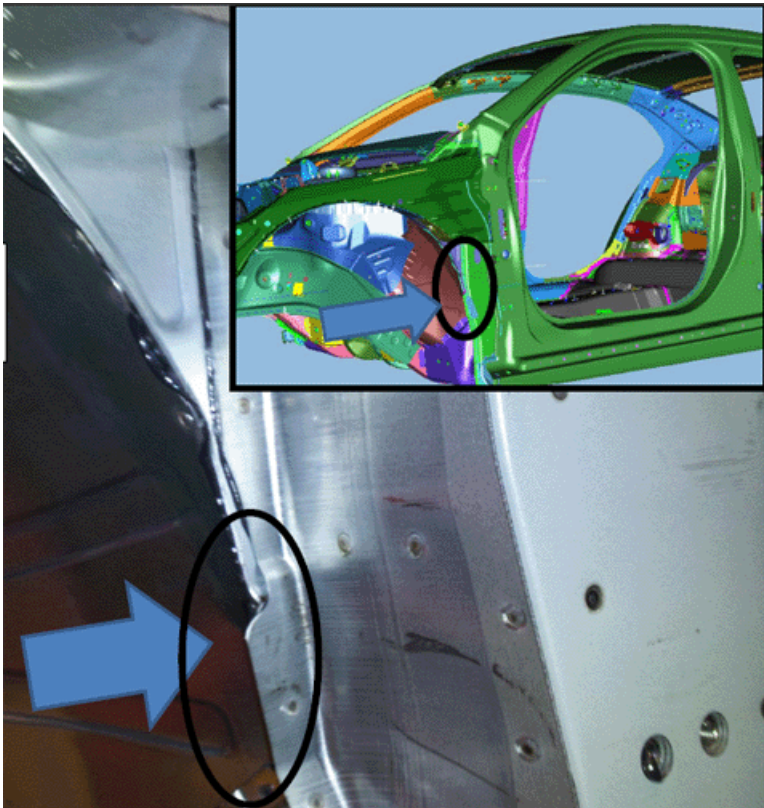
### Condition/Concern

A customer or technician may comment the front carpet and/or floor is wet.

### Recommendation/Instructions

Front wheel house flange may have a void in the sealer.

Seal the void using a thumb grade sealer (also referenced as a "heavy-bodied caulking material" in SI) pushed into the void from the wheel opening. For location of flange see the graphics below.



### Warranty Information

For vehicles repaired under warranty, please refer to the latest version of bulletin 11-00-89-007 for warranty information on Exterior Labor Operations.

Please follow this diagnostic or repair process thoroughly and complete each step. If the condition exhibited is resolved without completing every step, the remaining steps do not need to be performed.

GM bulletins are intended for use by professional technicians, NOT a "do-it-yourselfer". They are written to inform these technicians of conditions that may occur on some vehicles, or to provide information that could assist in the proper service of a vehicle. Properly trained technicians have the equipment, tools, safety instructions, and know-how to do a job properly and safely. If a condition is described, DO NOT assume that the bulletin applies to your vehicle, or that your vehicle will have that condition. See your GM dealer for information on whether your vehicle may benefit from the information.



WE SUPPORT VOLUNTARY TECHNICIAN CERTIFICATION