



# Service Bulletin

## PRELIMINARY INFORMATION

**Subject:** PIP4920J BAS+ (HYBRID) eAssist TAC Parts Restriction

**Models:** 2012-2013 Buick LaCrosse, Regal

2013 Chevrolet Malibu ECO

All equipped with eAssist (RPO HP6)

*This PI was superseded to update part numbers. Please discard PIP4920H.*

The following diagnosis might be helpful if the vehicle exhibits the symptom(s) described in this PI.

### Condition/Concern

As part of our ongoing quality improvement process, the following components will remain on restriction through the GM Technical Assistance Center (TAC).

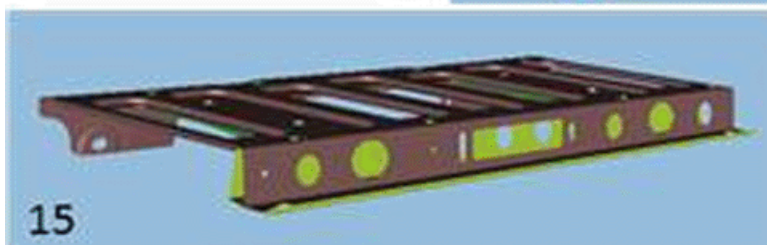
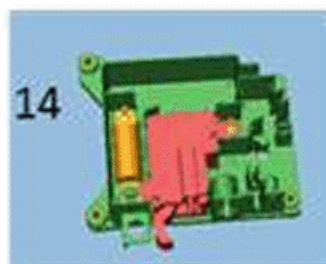
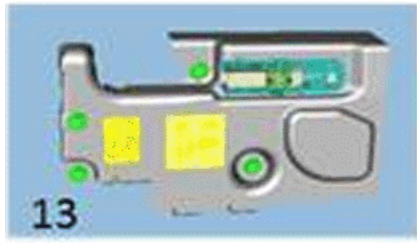
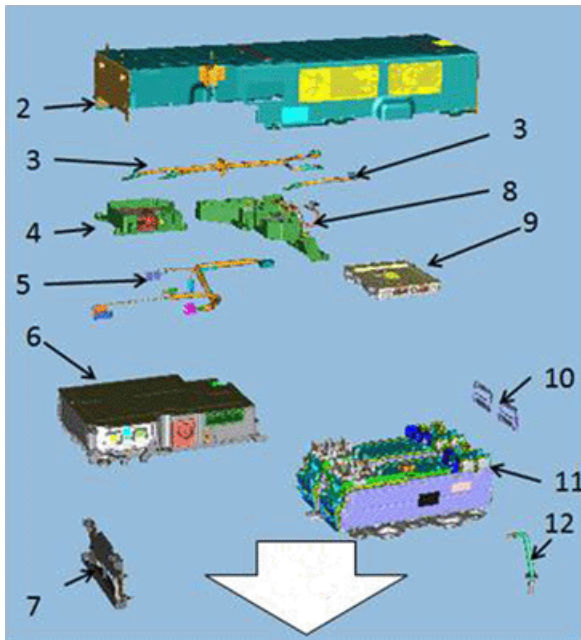
- The Starter Generator (MGU) will remain on restriction through the Product Quality Center (PQC). When ordering the MGU, contact the PQC at 1-866-654-7654. If further diagnosis is required after contacting the PQC for an MGU, PQC will transfer the Dealer back to TAC for further assistance.
- If a complete Generator Battery Control Module (Powerpack) is needed, the Dealer must call TAC to have the order authorized first and then call their local Electronic Service Center (ESC) to place the order. Please refer to the latest version of PIC5520.

### Recommendation/Instructions

**Important:** If the 12V system voltage has fallen below a predetermined level (approximately 9V), use GDS2 to command the Battery Pack Cooling Fan on to make sure it operates.

- If the Battery Pack Blower Fan is inoperative and the vehicle build date is on or between December 15, 2011 and April 23, 2012, replace the Battery Pack Cooling Fan.
- Check to ensure the Generator Control Module SPS calibrations are current.
- If the vehicle build date is before December 15, 2011 or April 23, 2012 and later, follow published G.S.I. Diagnostics.





PART NAME	NUMBER	SERVICE INFORMATION	SI DOC ID	LABOR CODE	FIGURE
Battery Energy Control Module (BECM)	20969054	BECM Replacement	2599120	N5821	9
2012 Buick LaCrosse, Regal / 2013 Chevrolet Malibu Eco Generator Control Module (GCM)	24267940 supersedes 12635717	Generator Control Module Replacement	2602390	N5875	6
2013 Buick LaCrosse, Regal Generator Control Module (GCM)	24267941 supersedes 12650851	Generator Control Module Replacement	2602390	N5875	6
Auxiliary Transmission Fluid Pump	24241057	Auxiliary Transmission Fluid Pump Replacement (Hybrid)	2580949	K6544	N/A

Starter Generator (MGU)	24261691	Starter Generator Replacement	2543171	N5873	N/A
Generator Battery Control Wiring Junction Block (Includes Fuse 25846011)	20910412	Battery Energy Control Module Wiring Junction Block Replacement	2652250	N5838	4
Generator Battery Disconnect Relay (Includes Contactor Relay and Pre-Charge Resistor)	20910413	Drive Motor Battery Wire Junction Block Relay Replacement	2652258	N5781	8
Battery Energy Control Module (BECM) Wiring Harness	24246371	Battery Energy Control Module Wiring Harness Replacement (BDU, BECM and BPIM)	2631017	N5840	5
Battery Disconnect Switch Wiring Harness (LH HV Measurement Harness 1)	20917530	Battery Energy Control Module Wiring Harness Replacement (HV Measuring Harness 1 and 2)	2603041	Use N5824	11
Battery Disconnect Switch Wiring Harness (RH HV Measurement Harness 2)	20917531	Battery Energy Control Module Wiring Harness Replacement (HV Measuring Harness 1 and 2)	2603041	Use N5824	11
Generator Battery	20813602	Generator Battery Replacement	2604097	N5824	11
2012 Buick LaCrosse, Regal 2013 Chevrolet Malibu Eco Generator Control and Battery Module (Complete PowerPack)	23102218 supersedes 24259770	PowerPack Replacement and Shipping Preparation	2667688	N5866	1
2013 Buick LaCrosse, Regal Generator Control and Battery Module (Complete PowerPack)	23102217 supersedes 22948845	PowerPack Replacement and Shipping Preparation	2667688	N5866	1
Generator Control and Battery Module (PowerPack) Use latest version of PIC5520	N/A	PowerPack Ordering Instructions and Feedback Form	2748016	N/A	N/A

If diagnostics lead to the replacement of any of the components listed above other than the MGU, please contact TAC at Telephone Number US 1-877-446-8227 (Action Center prompt or Hybrid prompt) or Canada 1-800-263-7740 for English or 1-800-263-7960 for French.

Please follow this diagnostic or repair process thoroughly and complete each step. If the condition exhibited is resolved without completing every step, the

remaining steps do not need to be performed.

---

GM bulletins are intended for use by professional technicians, NOT a "do-it-yourselfer". They are written to inform these technicians of conditions that may occur on some vehicles, or to provide information that could assist in the proper service of a vehicle. Properly trained technicians have the equipment, tools, safety instructions, and know-how to do a job properly and safely. If a condition is described, DO NOT assume that the bulletin applies to your vehicle, or that your vehicle will have that condition. See your GM dealer for information on whether your vehicle may benefit from the information.



WE SUPPORT VOLUNTARY TECHNICIAN CERTIFICATION