



Service Bulletin

PRELIMINARY INFORMATION

Subject: Oil Consumption Possible PCV Pull Over

Models: 2012-2013 Cadillac Escalade, Escalade ESV, Escalade EXT
2012-2013 Chevrolet Avalanche, Express, Silverado 1500, Suburban, Tahoe
2012-2013 GMC Savana, Sierra 1500, Sierra Denali, Yukon, Yukon XL, Yukon Denali, Yukon Denali XL
Equipped With engines:
L20, LC9, LH9, LMF, LMG, L96, LC8, LZ1, L94, L9H

The following diagnosis might be helpful if the vehicle exhibits the symptom(s) described in this PI.

Condition/Concern

Some customers may comment on a service engine soon light, a rough running engine, and/or oil consumption.

Recommendation/Instructions

Technicians may find a DTC P0300 set.

If this encountered, inspect number 1 and 7 spark plugs for oil fouling, as well as the intake manifold runners for an excessive amount of oil, as this can be an indication of oil pullover from the PCV system.

Clean the oil from the intake and the PCV baffle.

Check for possible PCV baffle leaks with the left valve cover removed, (see the attached pictures.)

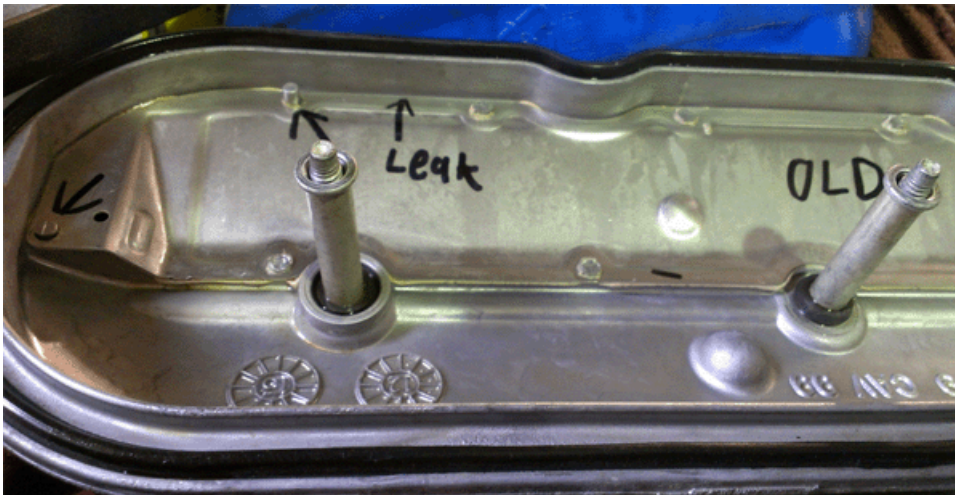
Check for possible PCV baffle leaks by plugging both the baffles' small hole and square vent, then apply regulated air pressure through the PCV pipe and spray soapy water where the PCV baffle and valve cover meet with soapy water to inspect for possible signs of a leak.

If a leak is found, the valve cover should be replaced.

The new valve cover should also be tested before it is installed.

Below you will find pictures showing areas of a possible PCV baffle leak.





The pins that are shown as not staked; that is normal.

Warranty Information

For vehicles repaired under warranty, please use the appropriate warranty labor operation based on the actual cause and repair.

Please follow this diagnostic or repair process thoroughly and complete each step. If the condition exhibited is resolved without completing every step, the remaining steps do not need to be performed.

GM bulletins are intended for use by professional technicians, NOT a "do-it-yourselfer". They are written to inform these technicians of conditions that may occur on some vehicles, or to provide information that could assist in the proper service of a vehicle. Properly trained technicians have the equipment, tools, safety instructions, and know-how to do a job properly and safely. If a condition is described, DO NOT assume that the bulletin applies to your vehicle, or that your vehicle will have that condition. See your GM dealer for information on whether your vehicle may benefit from the information.



WE SUPPORT VOLUNTARY TECHNICIAN CERTIFICATION