



Service Bulletin

PRELIMINARY INFORMATION

Subject: 2014 Cadillac CTS 3.6 (LF3) Twin Turbo Charger Restriction

Models: 2014 Cadillac CTS
Equipped with 3.6L LF3 Turbocharged engine
Part #12659010 Left Side
Part #12659011 Right Side

The following diagnosis might be helpful if the vehicle exhibits the symptom(s) described in this PI.

Condition/Concern

The turbocharger Part numbers 12659010 and 12659010 on the 2014 3.6L LF3 engine has been placed on a PQC restriction/ exchange.

Recommendation/Instructions

Some customers, or dealers while performing PDI, may comment that a rattle condition may be noted during park/neutral while revving the engine; the condition may also be noted briefly during engine run up from a cold start condition.

The described condition, the brief and random rattle does not present a risk to the performance, efficiency or durability of the engine system and should not warrant the replacement of components in an attempt to mitigate the concern.

When diagnosis leads to turbocharger replacement on this vehicle complete the following questions before calling PQC.

Caller's Name/Position:

Parts Manager's Name:

Technician's Direct Phone:

Dealership's Fax Number:

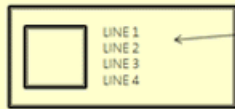
Parts Fax Number:

1. What was the customer's concern?
2. Have you completed the "Parts Restriction Worksheet" in this PI
[If you are not prepared to answer template questions, you will be asked to complete the worksheet and call back.]
3. Has the vehicle been modified with non-production accessories?
4. Is the vehicle for personal or commercial use?
5. Describe the Condition the technicians are experiencing:
6. Serial number of Turbo unit: serial number of the turbo charger in question.

Content of Turbo ID Block for Already Sourced Programs

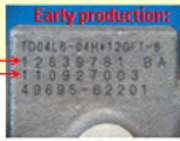
17-FEB-2013

Information highlighted below will be placed on the drawing



THE FOLLOWING INFORMATION SHALL BE PERMANENTLY MARKED INTO DEFINED LOCATION

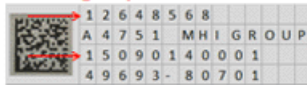
LINE 1 GM Part Number
LINE 2 Type Approval Code, Supplier
LINE 3 Serial Number
LINE 4 Supplier Part Number



Type Approval Code Decoding

Position 1 Type Approval Code Variance (Default "A")
Positions 2-3 Turbine Wheel Diameter in mm (last two digits)
Positions 4-5 Compressor Wheel Diameter in mm (last two digits)

Regular production:



7. Does the vehicle have any DTCs in the ECM/TCM/BCM?

Note: GDS must be launched from TIS to make sure all the data is captured and can be retrieved.

8. Leaks

- Any leaks?
- What type of leak?
- Where is the leak located?

9. Noise

- Any noise?
- What kind of noise?
- Where is it?
- How frequent is the noise?
- When does it occur?
- How long does it last?
- At what temperature does it occur?

10. Lubrication

- Oil pressure readings:
- Results of oil consumption test:
- Was the oil contaminated?
- What type of contamination?

11. Performance Concerns

- Low power?
- Misfire?
- Detonation?
- Blue smoke?
- White smoke?

12. Has the unit been disassembled?

13. What is the point of failure?

Please follow this diagnostic or repair process thoroughly and complete each step. If the condition exhibited is resolved without completing every step, the remaining steps do not need to be performed.

GM bulletins are intended for use by professional technicians, NOT a "do-it-yourselfer". They are written to inform these technicians of conditions that may occur on some vehicles, or to provide information that could assist in the proper service of a vehicle. Properly trained technicians have the equipment, tools, safety instructions, and know-how to do a job properly and safely. If a condition is described, DO NOT assume that the bulletin applies to your vehicle, or that

your vehicle will have that condition. See your GM dealer for information on whether your vehicle may benefit from the information.



WE SUPPORT VOLUNTARY TECHNICIAN CERTIFICATION