



Service Bulletin

PRELIMINARY INFORMATION

Subject: Diagnostic Tip - 2010 through 2014 6.6L Duramax Fuel System Contamination Identification

Models: 2010 through 2014 Chevrolet Express, Silverado
2010 through 2014 GMC Savana, Sierra
Equipped with the 6.6L Duramax Diesel Engine RPO codes LGH and LML

This PI was superseded to include warranty information. Please discard PIP5151.

The following diagnosis might be helpful if the vehicle exhibits the symptom(s) described in this PI.

Condition/Concern

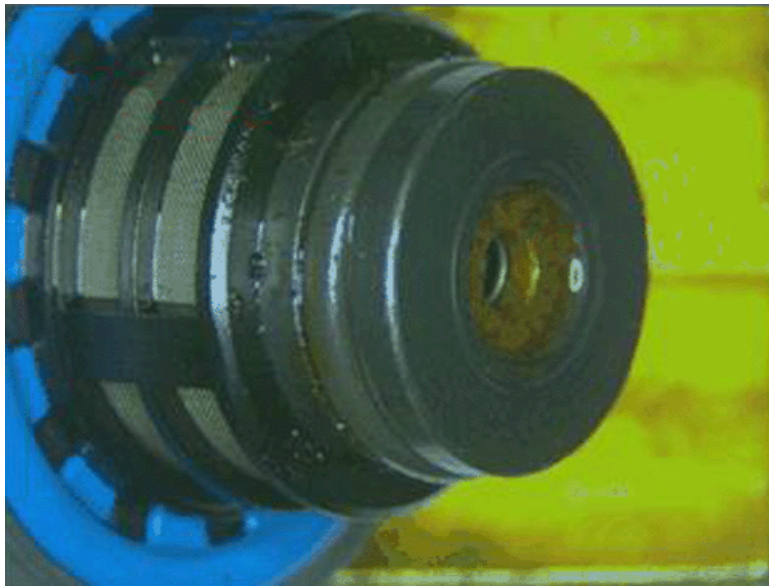
A dealer may encounter a customer's concern of hard start, no start, rough running, low fuel pressure and/or DTCs P0087, P0088, P0191 and P128E. During inspection of the fuel system and its components, the dealer may find contamination. Below are examples of contamination that has been found in returned parts and what we believe to be the source of the contamination.



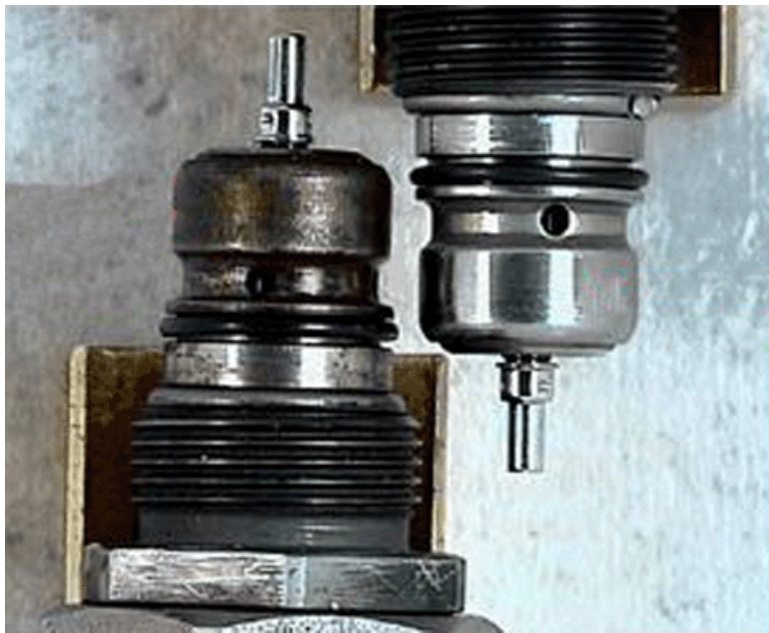
Fuel Pressure Regulator 1 Contaminated With Diesel Exhaust Fluid (DEF)



Fuel Pressure Regulator 1 Contaminated With DEF



Fuel Pressure Regulator 1 With Rust Due To Water Contamination



Fuel Pressure Regulator 2 With Rust (On Left) Due To Water Contamination



Fuel Pressure Regulator 2 With DEF Contamination

Recommendation/Instructions

If the above types of contamination are found, be sure to thoroughly inspect, clean and flush the fuel system. Refer to SI for fuel system cleaning procedures.

Warranty Information

This PI is being published to help the technician to be able to identify the signs of contamination in Diesel fuel. If you see evidence of contamination take appropriate measures to ensure that all of the contaminated fuel is removed from the vehicle. For fuel testing, please refer to PIT3173C: Information On Testing Centers for Fluid Contamination Analysis. Any components that have failed as a result of contamination should NOT be covered by warranty.

Please see New Vehicle Limited Warranty:

Damage Due to Contaminated or Poor Quality Fuel

Poor fuel quality or incorrect fuel may cause drivability problems such as hesitation, lack of power, stalling, or failure to start. It may also render gauges inoperable or degrade functionality for components such as spark plugs, oxygen sensors, and the catalytic converter. Damage from poor fuel quality, water

contamination, or incorrect diesel fuel or gasoline may not be covered.

For more on information on if the repairs should be covered under warranty review with your District Manager of Aftersales.

Please follow this diagnostic or repair process thoroughly and complete each step. If the condition exhibited is resolved without completing every step, the remaining steps do not need to be performed.

GM bulletins are intended for use by professional technicians, NOT a "do-it-yourselfer". They are written to inform these technicians of conditions that may occur on some vehicles, or to provide information that could assist in the proper service of a vehicle. Properly trained technicians have the equipment, tools, safety instructions, and know-how to do a job properly and safely. If a condition is described, DO NOT assume that the bulletin applies to your vehicle, or that your vehicle will have that condition. See your GM dealer for information on whether your vehicle may benefit from the information.



WE SUPPORT VOLUNTARY TECHNICIAN CERTIFICATION