

REFERENCE:	Nova Bus Manuals
SECTION:	12 Interior furnishing
RS N°:	MQR 7621-493
EFFECTIVE IN PROD.:	L681-118 (2012OC)

APPLICATION DEADLINE: 2014AL09

SUBJECT:	Driver's compartment door latch
JUSTIFICATION:	The latching mechanism might fail.

LEVEL	DESCRIPTION	DIRECT CHARGES		TIME
		LABOUR	MATERIAL	
1	Remove both parts of the door latch and replace with the new latch.	Nova Bus	Nova Bus	45 min
2	-	-	-	-

MATERIAL

QTY	PART N°	REV.	DESCRIPTION	REPLACES PART N°
LEVEL 1				
1	N16704	-	SCREW	-
2	N17565	-	WASHER OVERSIZE M6 SS	-
2	N25261	-	SCREW M6X25 CSK FLAT CR SS C70	-
2	N26760	-	WASER OVERSIZE	-
1	N35163	-	WASHER NORD LOCK M8	-
1	N44683	-	NUT	-
4	N44689	-	WASHER LOCKHELI M6 SS	-
2	N44890	-	NUT LOCKNYL M6 FL SSA2 C70	-
4	N58566	-	NUT DOMED M6 SS CL50 DIN1587	-
1	N68234	-	ROTARY LATCH SINGLE STAGE -TOP	-
1	N68236	-	DOOR BRACKET HOLDER LATCH FOR NYCT	-
4	N68305	-	BOLT MUSH SQ M6X35 SS D603	-
2	N68306	-	BOLT MUSH SQ M6X60 SS D603	-
1	N69510	-	BRACKET ASM HANDRAIL HOLDER	-
1	N69523	-	SCREW 5/16-18X1/2 CAP SHLD STL	-
1	N72243	-	SPACER	-
1	N72253	-	BUMPER	-
LEVEL 2				
-	-	-	-	-

Materials will be available within 63 days. To order, please contact Prevost Parts by phone at 1-800-771-6682, by fax at 1-888-668-2555 or by email at prevostparts.commandes@volvo.com. Specify document number, quantity of parts required and shipping address.

DISPOSAL OF PARTS

REMOVED PARTS ARE:	DISCARDED *	RETAINED	* Dispose of the unused parts and the defective parts in accordance with local environmental standards in effect.
	Yes	–	

REVISION HISTORY

REV.	DATE	CHANGE DESCRIPTION	WRITTEN BY
NR	2012DE20	Initial release	Danielle Lacroix

CLIENT	ORDER	ROAD NUMBER		VIN (2NVY/4RKY...)		QTY
		FROM	TO	FROM	TO	
New York City Transit - New York	L643	5895	5895	S92U1B4000143	S92U1B4000143	1
New York City Transit - New York	L670	5771	5784	S92U9B4000147	S92U1B4000160	14
New York City Transit - New York	L670	5785	5857	S92U4B4000170	S92U3B4000242	73
New York City Transit - New York	L681	5896	5896	S92U2C4500023	S92U2C4500023	1
New York City Transit - New York	L670	5858	5894	S92U4C4500024	S92U8C4500060	37
New York City Transit - New York	L670	5770	5770	S92UXC4500061	S92UXC4500061	1
New York City Transit - New York	L681	5897	5953	S92U1C4500062	S92U2C4500118	57
New York City Transit - New York	L681	5954	5959	S92U2C4500121	S92U1C4500126	6
New York City Transit - New York	L681	5960	5983	S92U0C4500134	S92U1C4500157	24
New York City Transit - New York	L692	5284	5284	S92U3C4500158	S92U3C4500158	1
New York City Transit - New York	L681	5984	5985	S92U5C4500162	S92U7C4500163	2
New York City Transit - New York	L681	5986	5986	S92U9C4500164	S92U9C4500164	1
New York City Transit - New York	L681	5253	5278	S92U0C4500165	S92UXC4500190	26

**WARNING**

Follow your internal safety procedures.

PROCEDURE

- 1.1. Remove the latch from the driver's door compartment. Keep the hardware. See Figure 1.
- 1.2. Remove the plate from the handrail. Discard the hardware. See figure 2.

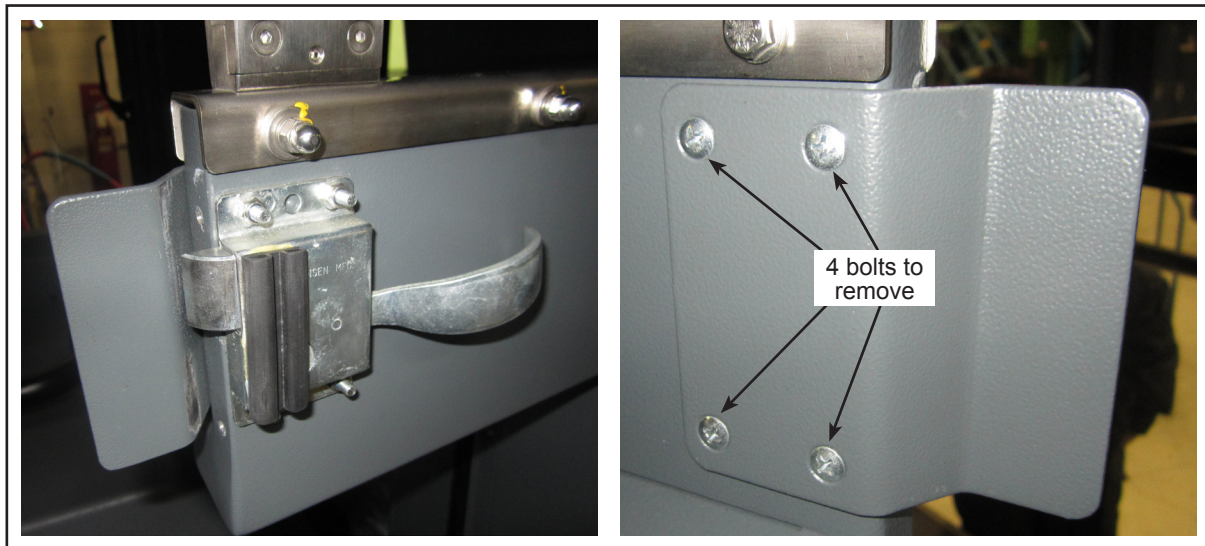


Figure 1 - Remove the Door Latch

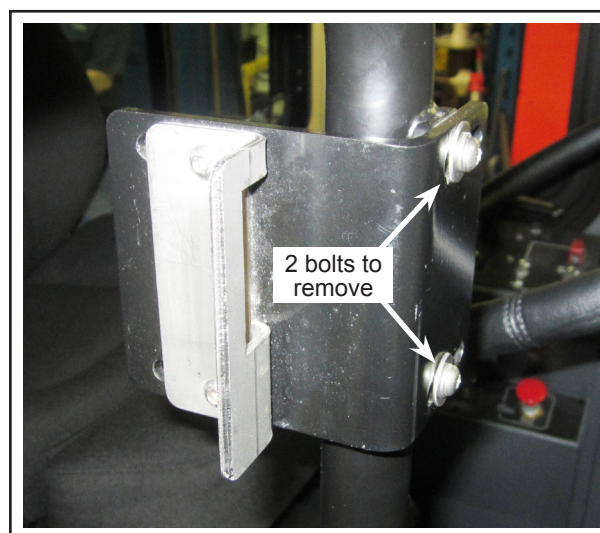


Figure 2 - Remove the Plate From the Handrail

- 1.3. With a 1/4" (6.35mm) drill bit, by going through the holes that already exist, drill two new holes on the exact opposite side of the handrail. Use the drilling jig NG1395 as shown in Figure 3 to drill the hole at the bottom. Then, flip the jig over to drill the hole at the top.

**NOTE**

The holes must be completely straight on the opposite side. If not, the latch and the plate will not be in the same plane for a proper closure.

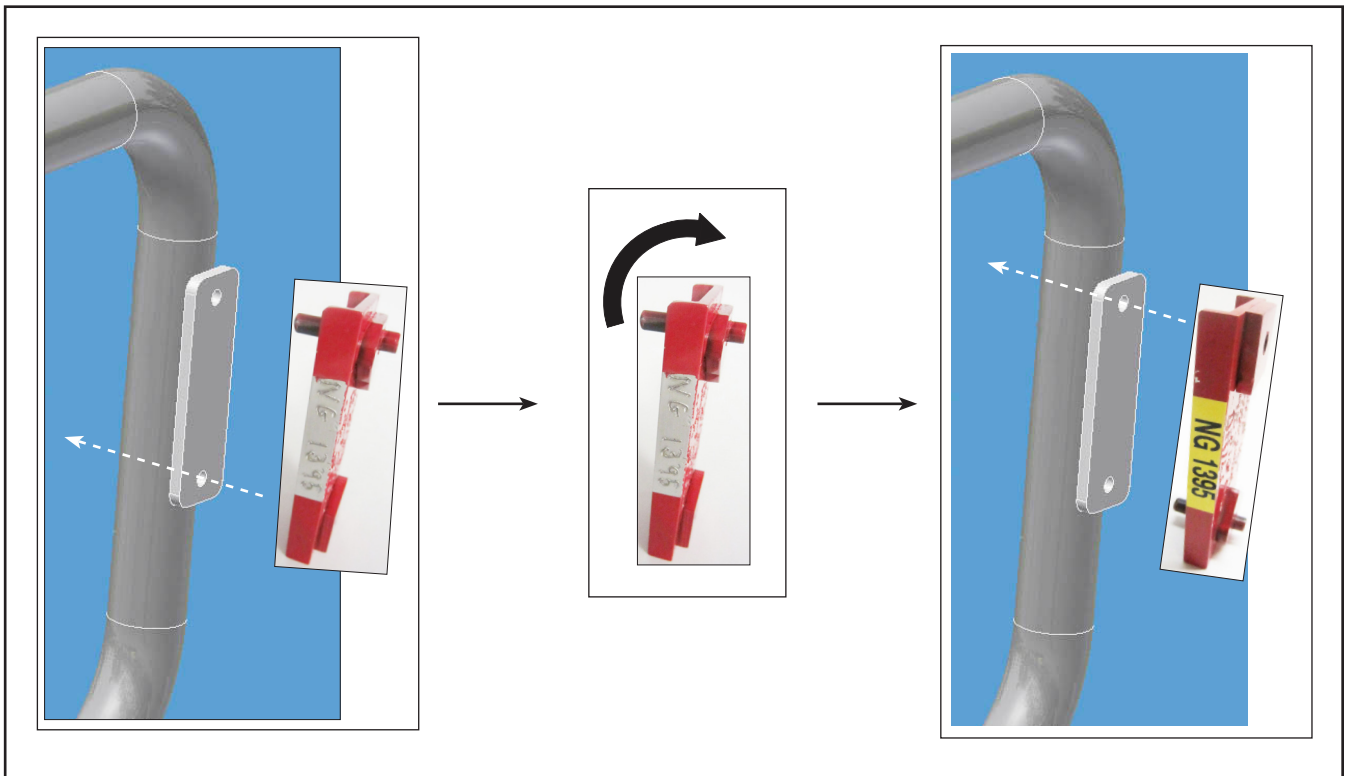


Figure 3 - Through the Handrail: Drill the Bottom Hole, Flip the Jig, and Drill the Top Hole

1.4. Assemble the parts on the handrail as indicated in Figure 4. Wait for the final adjustment before tightening them.

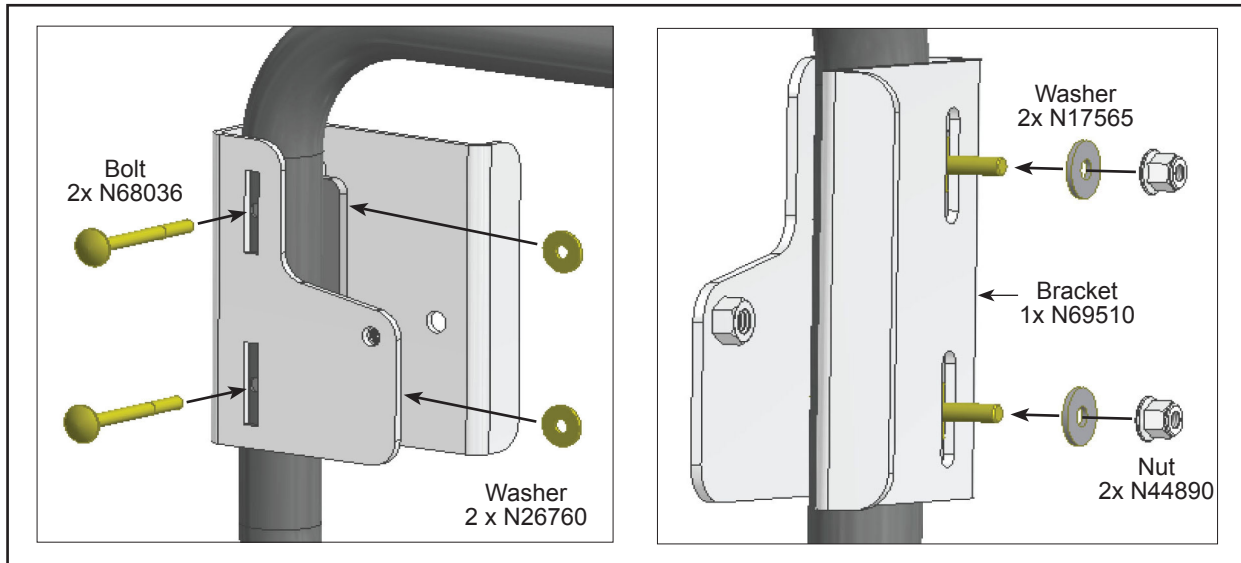


Figure 4 - Assembly of the New Plate on the Handrail

1.5. Install the parts indicated in Figure 5.

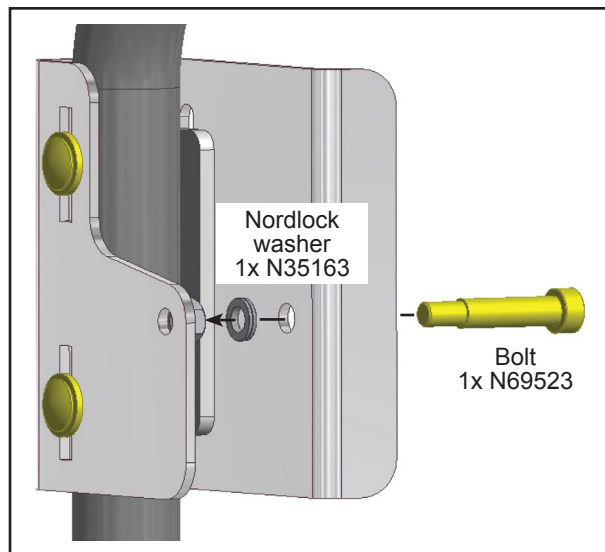


Figure 5 - Final Assembly of the New Plate on the Handrail

1.6. Assemble the latch by using the parts indicated in Figures 6 and 7.

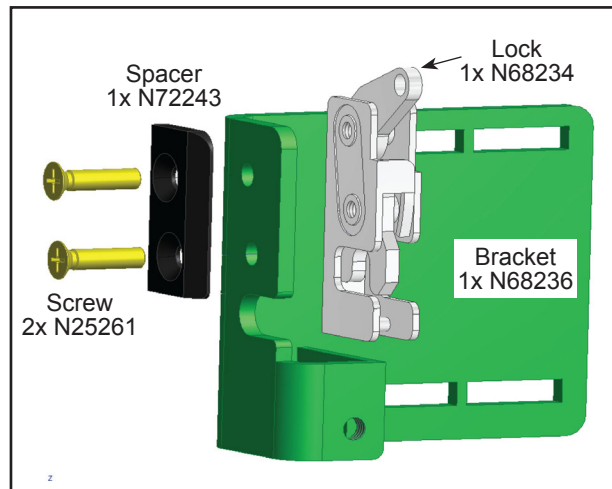


Figure 6 - Sub-Assembly of the Latch, Step 1

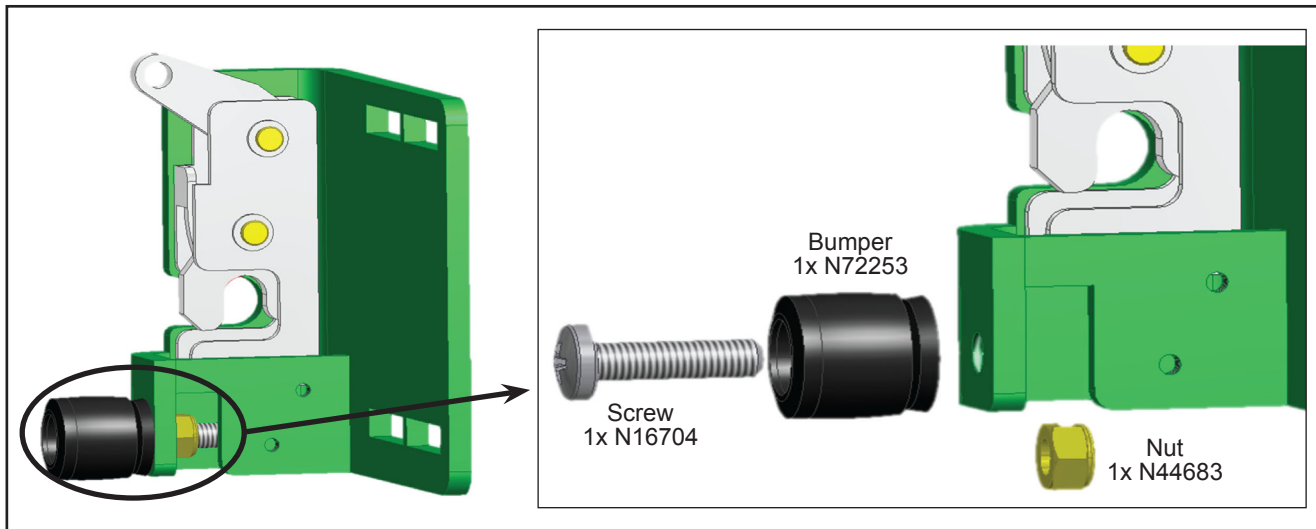


Figure 7 - Sub-Assembly of the Latch, Step 2

- 1.7. Mount this assembly on the door as indicated in Figure 8; use medium grade thread locker such as Loctite blue or an equivalent. Align both parts of the latch (the one on the door and on the handrail), then tighten to secure.

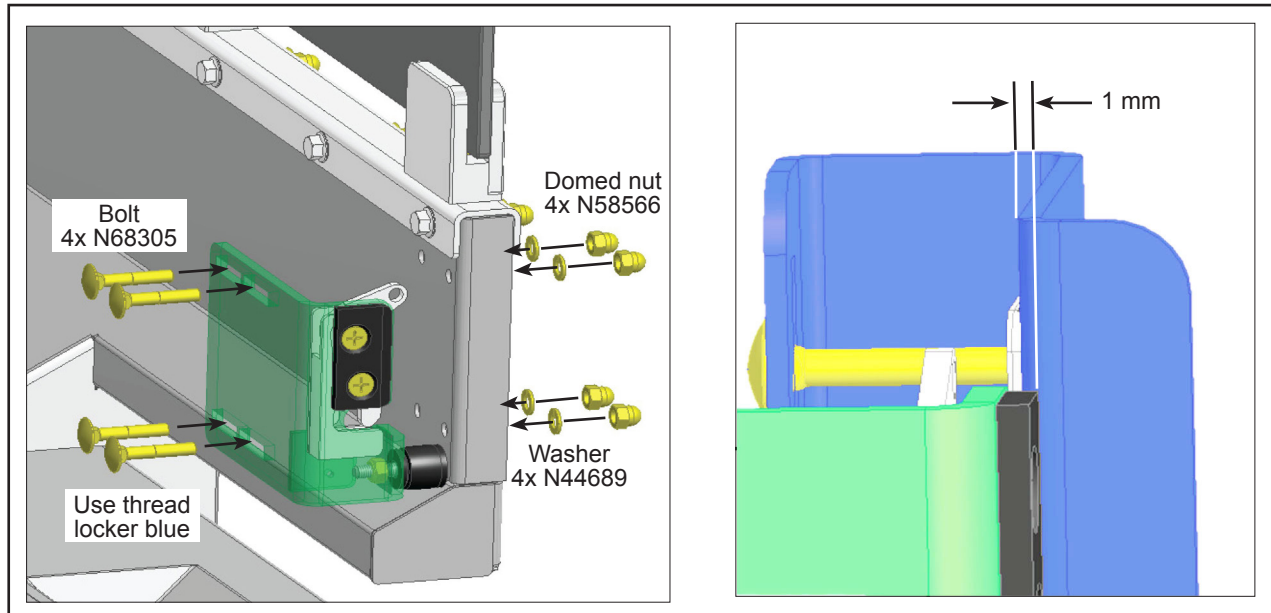


Figure 8 - Final Installation and Adjustment

- 1.8. If necessary, adjust the position of the bumper at the bottom of the door. ❖