

REFERENCE:	Nova Bus Manuals
SECTION:	09 Engine and accessories
RS N°:	MQR 7621-639
EFFECTIVE IN PROD.:	L762-01 (2013AL)

APPLICATION DEADLINE: 2014JN06

SUBJECT:	Engine belt guard hinge
JUSTIFICATION:	Belt guard hinge may crack in the upper part.

LEVEL	DESCRIPTION	DIRECT CHARGES		TIME
		LABOUR	MATERIAL	
1	Weld the belt guard hinge.	Nova Bus	Nova Bus	26 min
2	–	–	–	–

MATERIAL

QTY	PART N°	REV.	DESCRIPTION	REPLACES PART N°
LEVEL 1				
–	–	–	–	–
LEVEL 2				
–	–	–	–	–

Materials will be available within 2 days. To order, please contact PrevoSt Parts by phone at 1-800-771-6682, by fax at 1-888-668-2555 or by email at prevostparts.commandes@volvo.com. Specify document number, quantity of parts required and shipping address.

DISPOSAL OF PARTS

REMOVED PARTS ARE:	DISCARDED *	RETAINED	* Dispose of the unused parts and the defective parts in accordance with local environmental standards in effect.
	Yes	–	

REVISION HISTORY

REV.	DATE	CHANGE DESCRIPTION	WRITTEN BY
NR	2013JN06	Initial release	Wilder Galiano

CLIENT	ORDER	ROAD NUMBER		VIN (2NVY/4RKY...)		QTY
		FROM	TO	FROM	TO	
New York City Transit - New York	L536	1200	1201	S92U793000490	S92U993000491	2
New York City Transit - New York	L545	1202	1289	S92U5A4000001	S92U0A4000098	88
New York City Transit - New York	L608	8000	8014	L82U6B4000047	L82U0B4000061	15
New York City Transit - New York	L620	8015	8074	L82U2B4000062	L82U7B4000123	60
New York City Transit - New York	L621	8075	8089	L82U9B4000124	L82U9B4000138	15
New York City Transit - New York	L643	5895	5895	S92U1B4000143	S92U1B4000143	1
New York City Transit - New York	L670	5771	5894	S92U9B4000147	S92U8C4500060	124
New York City Transit - New York	L670	5770	5770	S92UXC4500061	S92UXC4500061	1
New York City Transit - New York	L681	5896	5986	S92U2C4500023	S92U9C4500164	91
New York City Transit - New York	L681	5253	5283	S92U0C4500165	S92U9C4500195	31
New York City Transit - New York	L692	5284	5363	S92U3C4500158	S92U3D4500274	80

**WARNING**

Follow your internal safety procedures.

PROCEDURE

- 1.1. Open the rear engine door. See Figure 1.



Figure 1 - Belt Guard Location

- 1.2. Remove the belt guard. Retain the hardware.
- 1.3. Remove the belt guard hinge assembly. Retain the hardware. See Figure 1.

1.4. Locate the two areas that need to be reworked. See Figure 2.

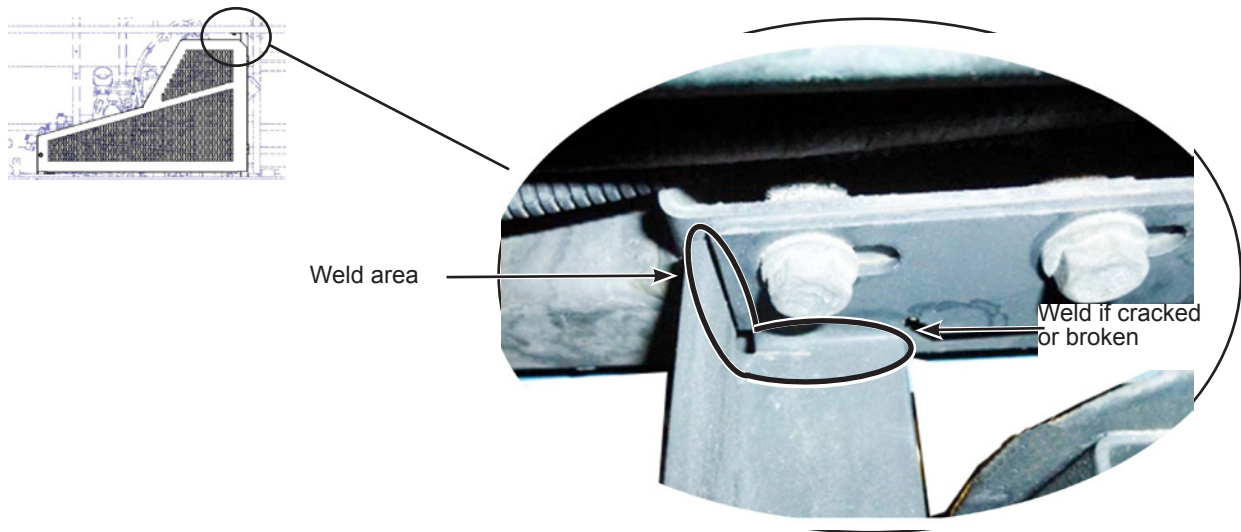


Figure 2 - Areas to be Reworked



NOTE

Preparation of the surfaces and welding techniques must be performed in accordance with the industry standards.

- 1.5. Prepare the surfaces to be welded.
- 1.6. Weld the surfaces. See Figure 2.
- 1.7. Apply a protective paint.
- 1.8. Install the belt guard hinge with the retained hardware. Do not tighten the bolts.
- 1.9. Install the belt guard.
- 1.10. Adjust the belt guard. Keep an even gap between the bumper and the belt safety guard. See Figure 3.

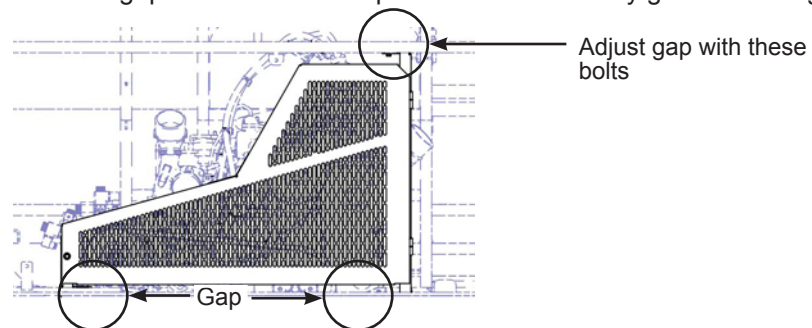


Figure 3 - Belt Guard Adjustment

- 1.11. Tighten the belt guard bolts.
- 1.12. Close the rear engine door. ❖