

Service Information

Workshop Equipment

Number: ATE-13-04

**Subject: John Bean VAG1943B, VAS6331, VAS6421 Aligners
Vehicle Data Update (VAG-02.2013)**

Date: Feb. 12, 2013

Supersedes ATE-12-23 dated December 7, 2012 Vehicle Data software updates.

This communication provides important information on how to obtain and install the latest software for the John Bean VAG1943B, VAS6331, VAS6421 alignment tools.

Latest Software Versions Released:

- VehicleSpecs_Database_VAG_022013.exe (vehicle data update Feb. 05, 2013) (171,776 KB)

Installation Requirements:

- All John Bean VAG1943B, VAS6331, VAS6421 Aligners must be previously updated to Pro32 Program software version 3.4 or higher before performing this update
- Attain a copy of Vehicle Specification updates installation instructions (see attachments)
- Dealers must download vehicleSpecs_Database_VAG_022013.exe file from ServiceNet>> *Wheel Alignment Software >> John Bean*

Installation:

To update the John Bean VAG1943B, VAS6331, VAS6421 Aligners, please read and follow the Vehicle Specification updates installation instructions attached.

Questions regarding installation of software updates to VAG1943B, VAS6331 or VAS6421 (after they have been downloaded), can call EquiServ technical support desk (service group for John Bean) at 800-225-5786. EquiServ will also be able to help with Aligner software and specifications installed from CD.

Vehicle Data Base VAG-022013*, February 2013
Supplements/Changes compared to Version VAG - 112012

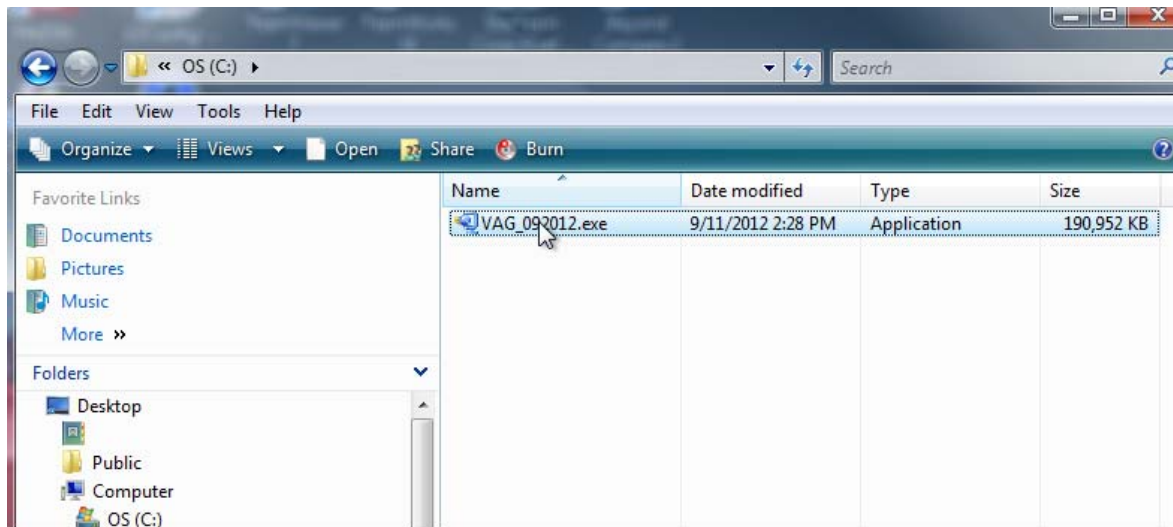
Fahrzeugdatenbank VAG-022013*, Februar 2013
Ergänzungen/Änderungen zur Version VAG - 112012

Volkswagen	-	-
Audi	A6 [4G] 1BY	2
	A1 [8X]	2
Skoda	Octavia III [5E]	2
Seat	-	-
Bentley	-	-
		1 = Neu / New 2 = Änderung / Change *= die ersten beiden Ziffern bezeichnen den Monat, die letzten 4 Ziffern die Jahreszahl

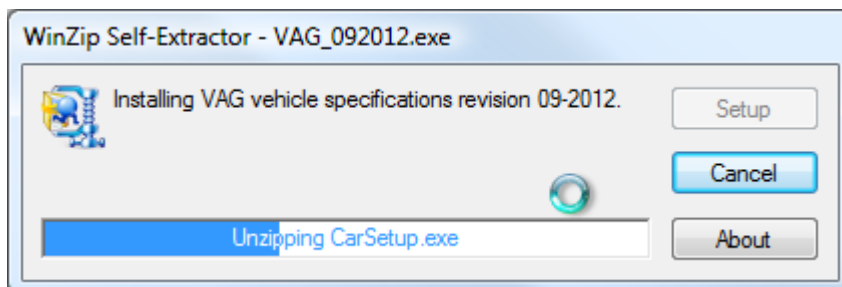
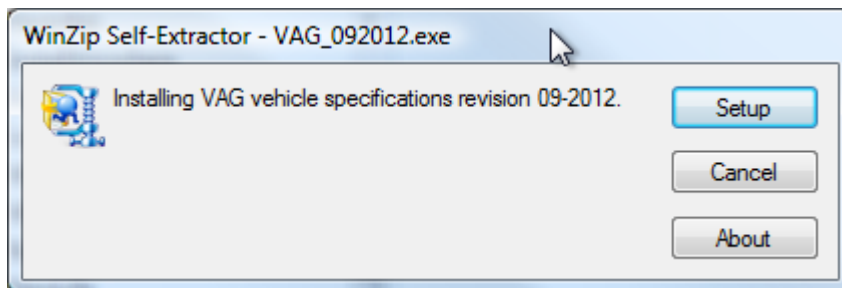
Vehicle Specs Installation Instructions VAG (Portal Install)

This document outlines the installation process for Pro32 specifications, specifically the VAG release portal version to be downloaded in the field as a self-extracting ZIP file.

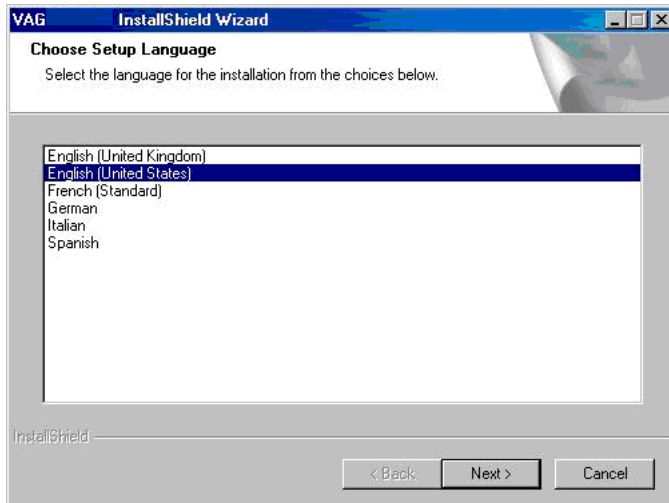
After downloading the self-extracting ZIP file from the portal, and copying to the aligner, double-click the self-extracting EXE file. **See example below.**



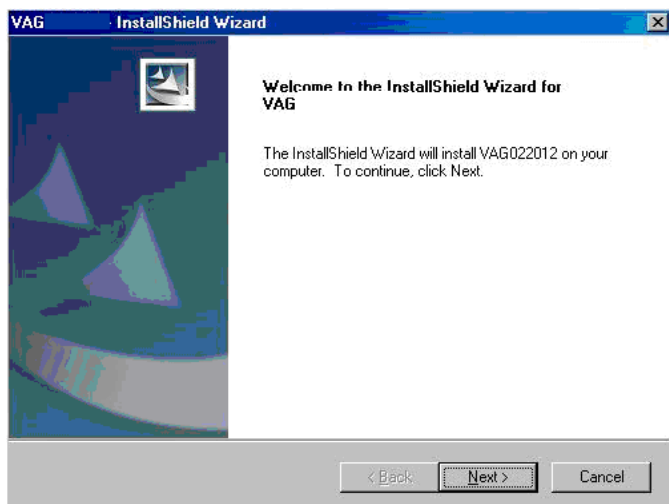
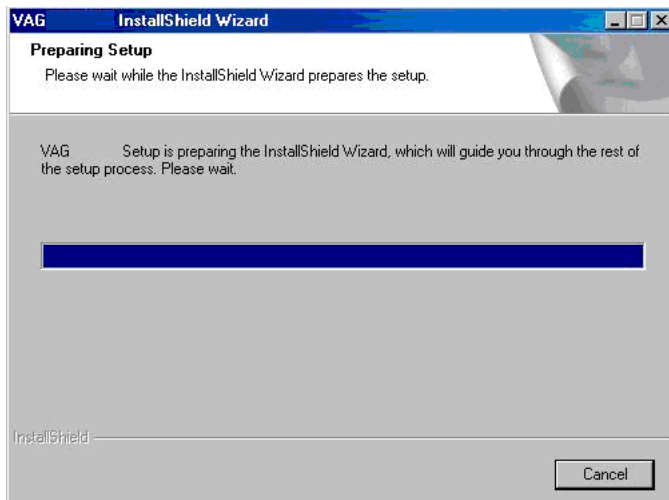
This will open the file to begin the extraction process. Press the "Setup" button and the dialog will show the unzip progress.



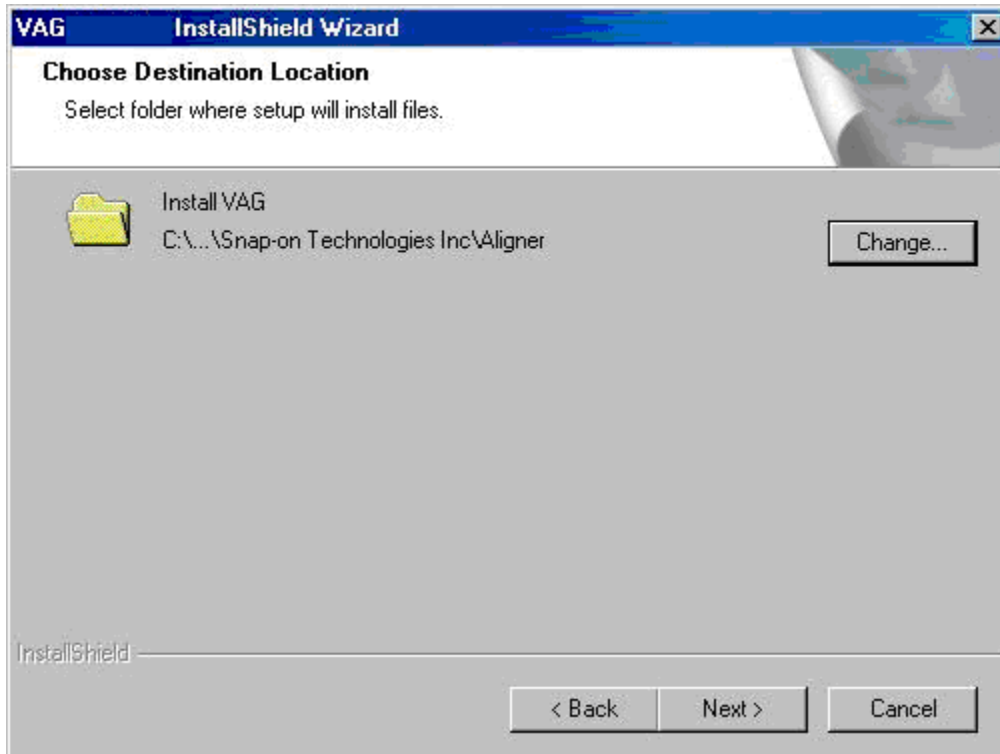
After the ZIP extracts, it will automatically start the Pro32 installer. Select the setup language in the first screen of the installer process and press Next to continue.



The installer prepares the installation process. Press "Next" when prompted.



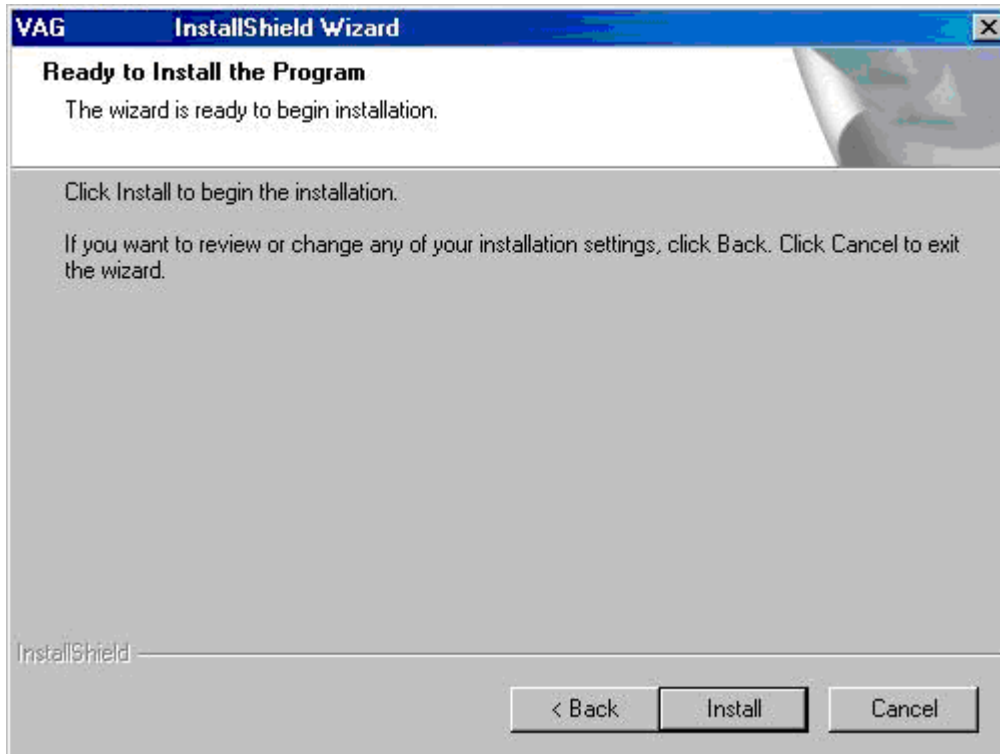
Select the default location for the database to be installed, unless the user knows it needs to go to a specific location.



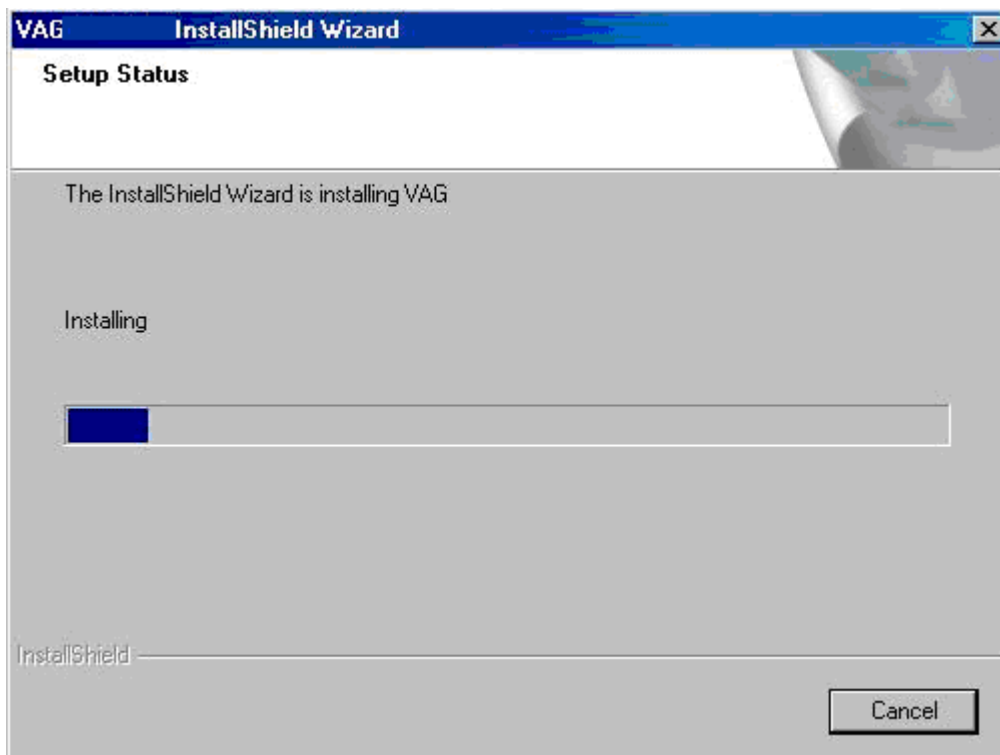
The installer continues with a screen displaying information. Select "Next" when requested.



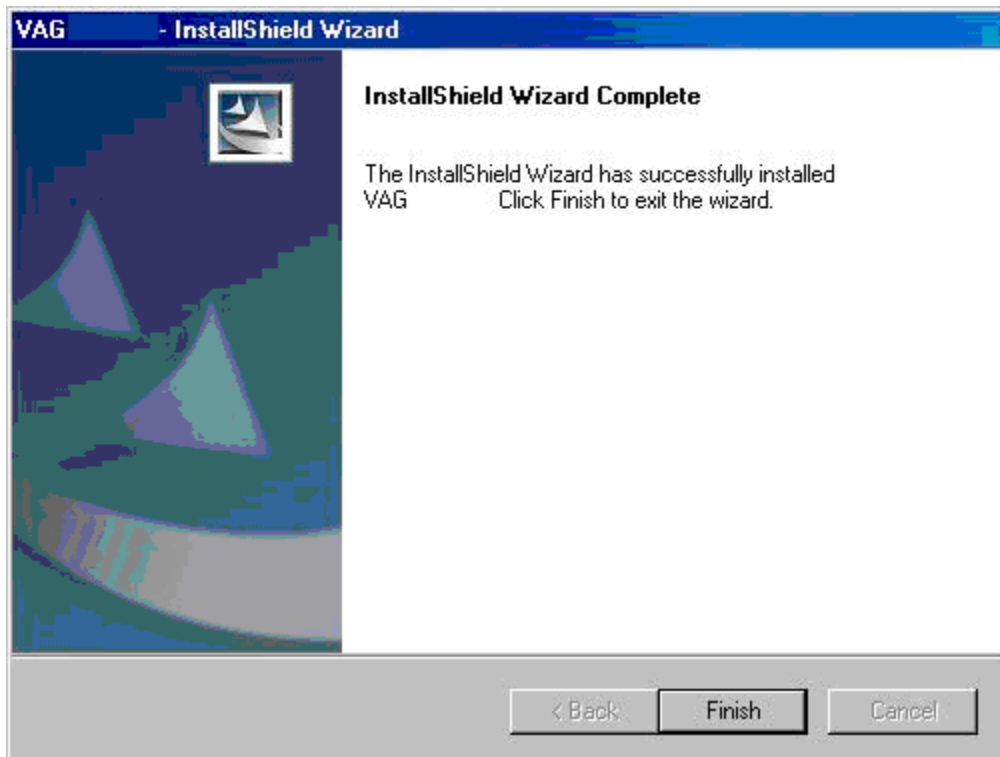
The installer is ready to begin the installation. Select "Install".



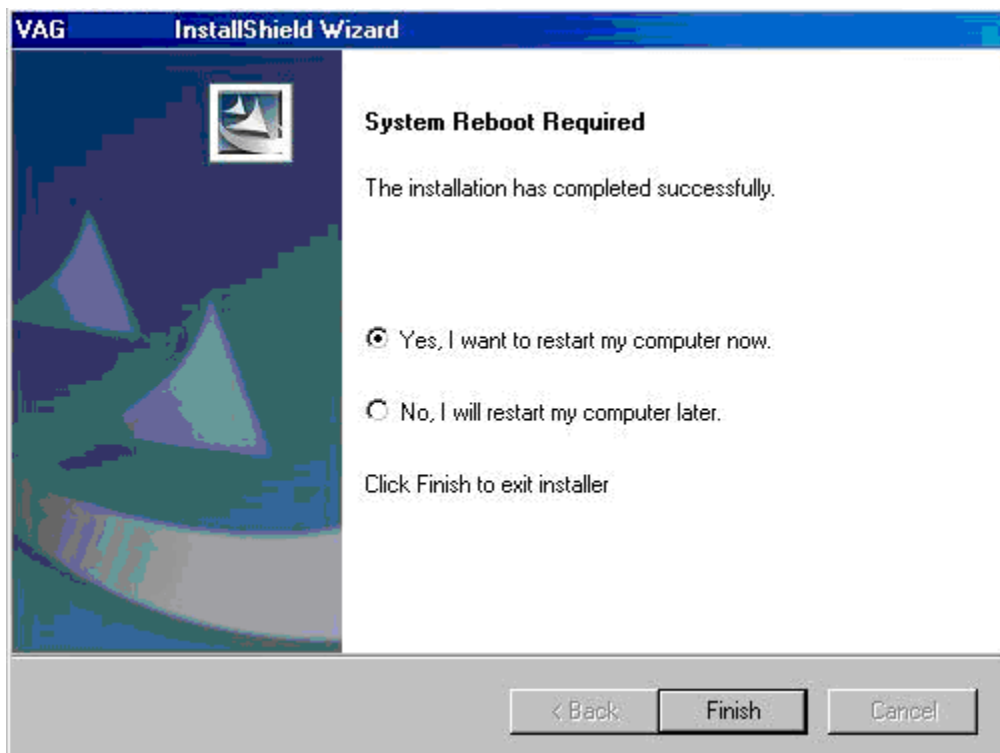
The installer provides a progress bar as the installation is performed.



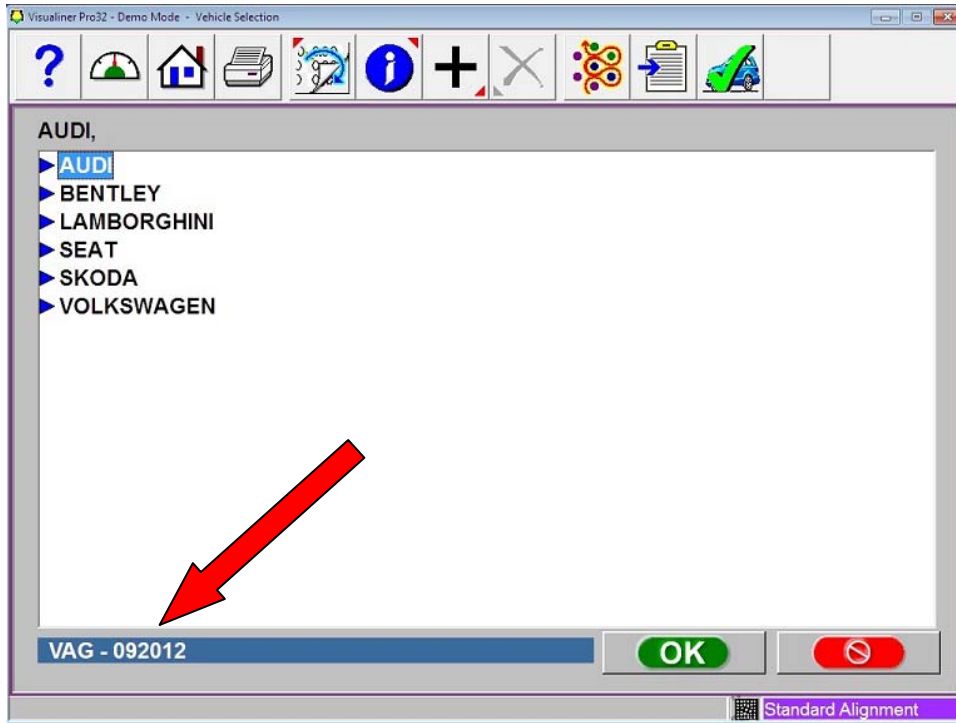
Select "Finish" after the installer completes the install and requests to do so.



The installer requests to restart the PC. Leave the selection to "Yes" and press "Finish".



After the PC restarts, the user can confirm the database version at 2 places: at the Vehicle Selection page, and using the "About" button on the Home page toolbar. See examples below.





Visualiner Pro32
Version : 4.7 - V3D - Sep 4 2012
Database : VAG - 092012



Firmware:

Copyright © 2001 Snap-on Technologies, Inc
All Rights Reserved.

The following are trademarks of Snap-on Technologies, Inc:

VoiceAlign™
FrameCheck™
RollingRadius™
NetSpecs™
ProAckermann™

Warning this computer program is protected by copyright laws and international treaties. Unauthorized reproduction or distribution of this program is strictly forbidden

