

Parts



Mazda North American Operations
Irvine, CA 92618-2922



REFERENCE NO: RF-13-09

DATE: September 23, 2013

SUBJECT: 2012-2013 MAZDA3, 2013-2014 CX-5, 2014 MAZDA6 – ESTABLISHMENT OF PROGRAMMED VALVE BODY AS SERVICE PART

For vehicles produced on or before March 31, 2013, a new programmed valve body has been established as a service part, and blank valve body FZ21-21-100 is no longer available as a service part. When you encounter an automatic transmission malfunction that needs a valve body replaced, select the appropriate one by following the parts information listed below until the EPC is updated.

Note: There is no need to perform the configuration of the TCM when you change the valve body to a new (programmed) one.

U.S. and Canada

Model	MY	Engine	Axle	Spec	Valve Body Part Number	TCM file name
Mazda3 (BL)	2012MY 2013MY	PE	2WD		PEY0-21-C00	PE08-21-PS1-*
CX-5 (KE)	2013MY	PE	2WD	w/o Kick Down s/w (to 9/6/12)	PEX1-21-C00	PE02-21-PS1-*
			4WD		PEX2-21-C00	PE1B-21-PS1-*
			2WD	w/ Kick Down s/w (from 9/7/12 to 11/19/12)	PEY1-21-C00	PEAS-21-PS1-*
			4WD		PEY2-21-C00	PEAT-21-PS1-*
	2014MY	PE	2WD		PEY5-21-C00A	PE1H-21-PS1-*
			4WD		PEY6-21-C00A	PE1K-21-PS1-*
2014MY	PY	2WD		PYY0-21-C00A	PY09-21-PS1-*	
		4WD		PYY1-21-C00A	PY2W-21-PS1*	
Mazda6 (GJ)	2014MY	PY	2WD		PYY3-21-C00	PY1E-21-PS1-*

Mexico


Model	MY	Engine	Axle	Spec	Valve Body Part Number	TCM file name
CX-5 (KE)	2013MY	PE	2WD		PEX7-21-C00	PE2T-21-PS1-*
	2014MY	PE	2WD		PEZ7-21-C00B	PE2P-21-PS1-*
			4WD		PEZ8-21-C00B	PE2R-21-PS1-*
		PY	2WD		PYZ0-21-C00B	PY5L-21-PS1-*
			4WD		PYZ1-21-C00B	PY5M-21-PS1-*
Mazda6 (GJ)	2014MY	PY	2WD		PYY7-21-C00	PY4K-21-PS1-*

PART NUMBER CONFIRMATION PROCEDURE FOR PROGRAMMED VALVE BODY

< Without IDS >

Enter VIN into EPC, then choose Vehicle Info and confirm vehicle spec and production date.


File Integration Search Bookmarks Information Filters / VIN Illustration Pick List Help

VIN: JM1BL1MP3D1800854  Filters On Section: DCCode: Part:

2013 MAZDA3 GASOLINE-ENGINE 4-CYLINDER TRANSMISSION 1925AB - AUT Mazda EPC - VIN

Add Note Show All Print

Name	Part Number	DCo.	Qty
<input type="checkbox"/> HARNESS,LOWER	FZ01-21-0A0A	210A0	001
<input type="checkbox"/> VALVE,BOTH REL			
<input type="checkbox"/> VALVE,SOLENOID	FZ01-21-1F1	211F1	001
<input type="checkbox"/> PIN,STOPPER	FZ01-21-257	21257	006
<input type="checkbox"/> BOLT	FZ01-21-264	21264	003
<input type="checkbox"/> SWITCH A,OIL PRESSURE	FZ01-21-2C0	212C0	001
<input type="checkbox"/> SWITCH B,OIL PRESSURE	FZ01-21-2J0	212J0A	001
<input type="checkbox"/> BALL,STEEL	99611-3000	46020J	005
<input type="checkbox"/> BOLT	99454-0660	99601	001
<input type="checkbox"/> BOLT	99454-0680	99601	001

Selected VIN: JM1BL1MP3D1800854 

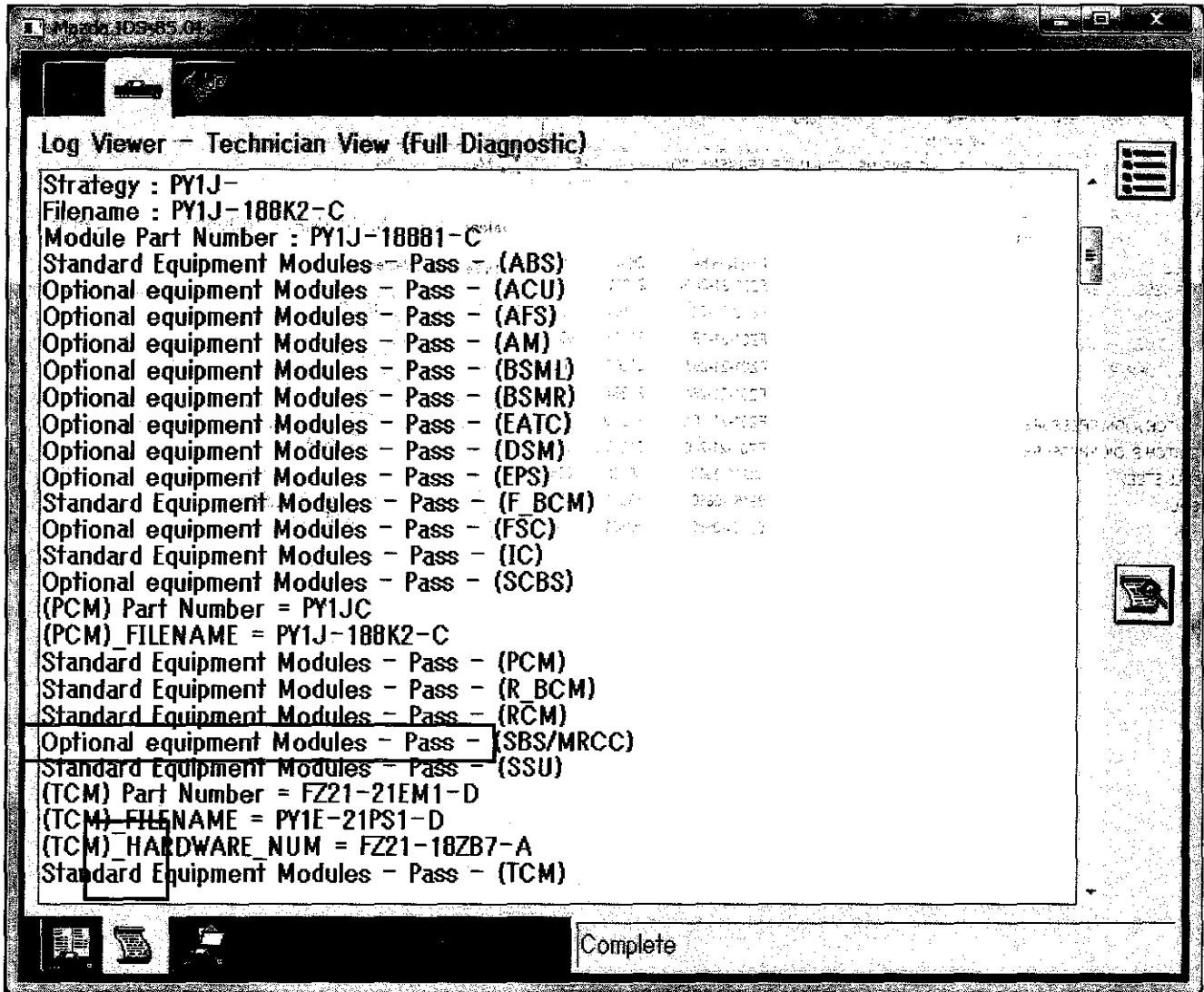
VIN Search Selected VIN Info

Model: MAZDA3
 Year: 2013
 Catalog: AU8A14
 Grade:
 Seat: STD
 Door: TDC
 Production Date: 02/21/2013
 Exterior Color: 16W
 Interior Color: BU4
 Description: W/O FENDER SIDE TURN LAMP
 W/SUNROOF
 HATCHBACK
 5-DOOR
 W/O TURBO
 GASOLINE
 2000
 AUTOMATIC TRANSMISSION
 6-SPEED
 NOR. DIFF
 2WD
 USA/CAN

OK Cancel Help

< With IDS >

Perform Vehicle Identification, select Log Viewer Sub-Tab then confirm TCM file name on Log Viewer screen.



Tony Lawrence

From: Chris Ciz
Sent: Monday, September 23, 2013 3:41 PM
Subject: MAZDA PARTS FLASH

Parts Flash Release – Sept 23, 2013

For a printable PDF file from MStore, please click on the link below each title

Parts Flash Index

http://www.mstore2000.com/PDF_Files/PartsFlashIndex09-23-13.pdf

The following Parts Flash is new:

2012-2013 MAZDA3, 2013-2014 CX-5, 2014 MAZDA6 – ESTABLISHMENT OF PROGRAMMED VALVE BODY AS SERVICE PART

http://www.mstore2000.com/PDF_Files/13-09.pdf