

Subject: NOISE FROM MAP LIGHT WHILE DRIVING	Bulletin No: 09-034/12
	Last Issued: 12/19/2012

BULLETIN NOTE

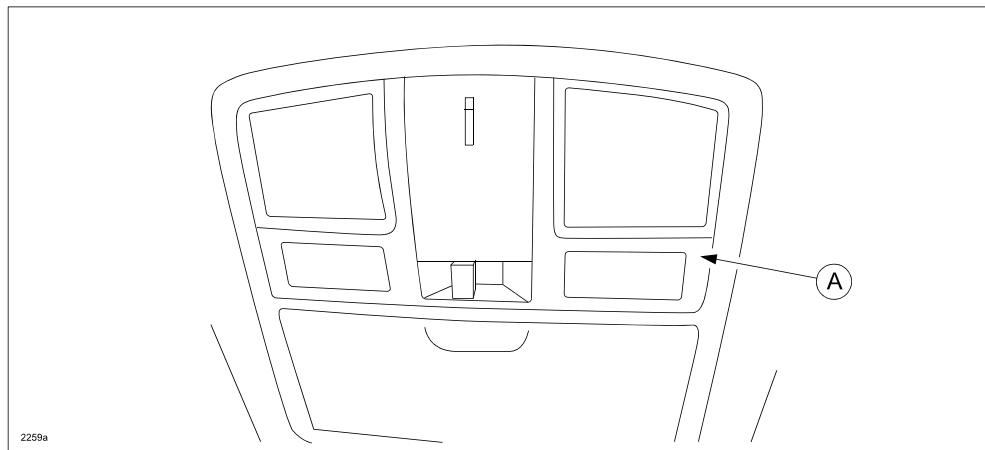
- This bulletin supersedes the previous bulletins 09-034/12 issued 08/22/12, 09-006/11 issued on 02/07/11, and 09-071/09 issued on 11/12/09. The APPLICABLE MODEL(S)/VINS, REPAIR PROCEDURE, PARTS INFORMATION, and WARRANTY have been revised.
- Changes are noted below beside the change bar in Red.

APPLICABLE MODEL(S)/VINS

2010 -2013 Mazda3 vehicles (including Mazdaspeed3) with VINs lower than JM1BL*****707083 (produced before August 8, 2012).

DESCRIPTION

Some vehicles may exhibit a noise from the map light (A) while driving or at idle. This is caused by one of two things.

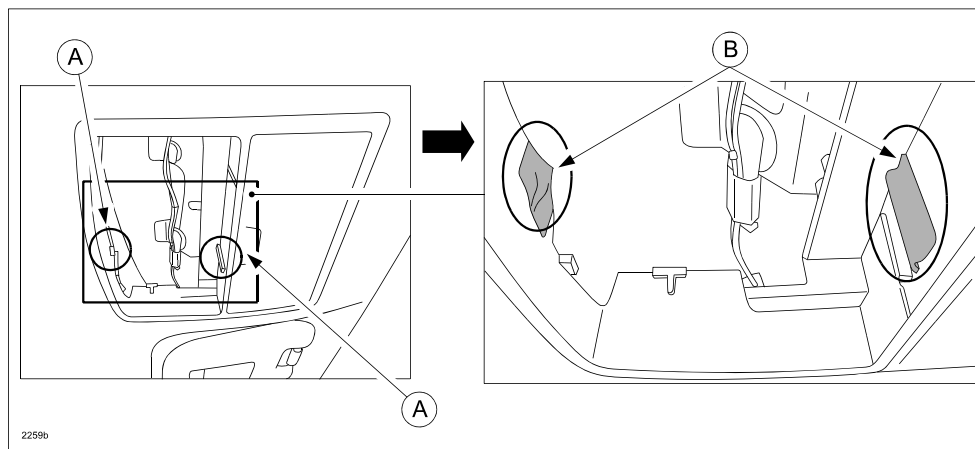


1. Excessive clearance between the map light and lamp unit positioning rib (for Mazda3 vehicles with VINs lower than JM1BL*****144839 / produced before April 1, 2009). The design of this rib has now been changed to correct this problem.
2. The overhead console bracket vibrates and contacts the roof panel (for Mazda3 vehicles with VINs JM1BL*****144839 to JM1BL*****707082 / produced after April 1, 2009 and before August 8, 2012). The noise occurs on vehicles that have a non-woven textile attached at the front stay. The material of the pads has now been changed to correct this problem.

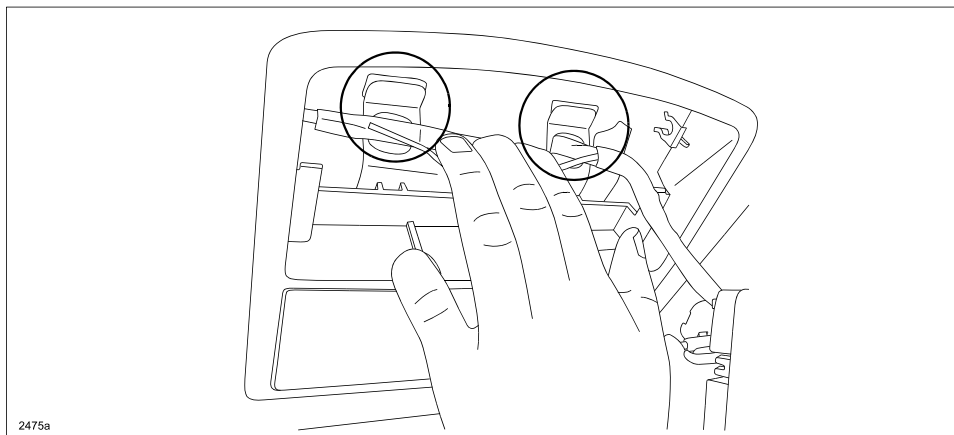
Customers having this concern should have their vehicle repaired using the following repair procedure.

REPAIR PROCEDURE

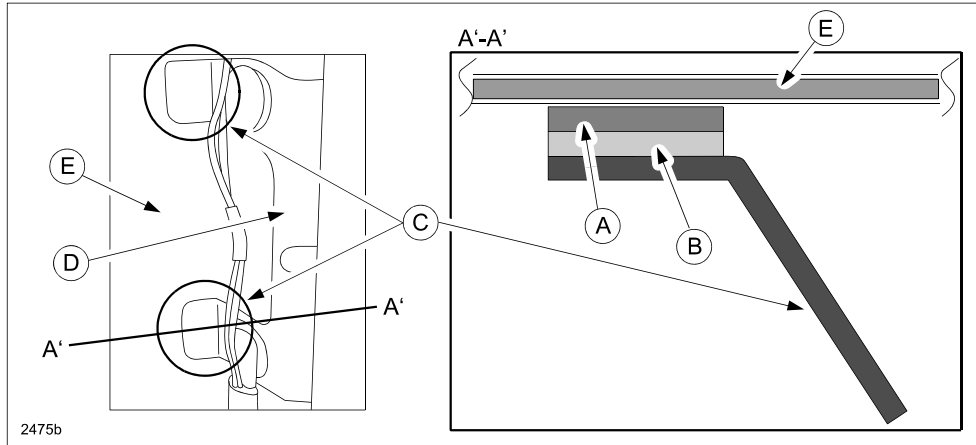
1. Verify customer concern.
2. Remove the map light. Refer to MS3 online instructions or Workshop Manual section 09-18 MAP LIGHT REMOVAL/INSTALLATION.
3. Check the vehicle VIN / production date.
 - If the vehicle VIN is JM1BL*****144838 or lower / production date is before April 1, 2009, go to step 4.
 - If the vehicle VIN is JM1BL*****144839 to JM1BL*****707082 / produced after April 1, 2009 and before August 8, 2012, go to step 6.
4. Select a sheet of pad 5mm in thickness from the "Noise Parts Set" (part number TA01-76-100) and cut two pieces to a size of 17mm x 25mm.
5. Locate the positioning ribs (A) and apply the 2 pads (B) over the ribs.



6. Check the vehicle VIN / production date.
 - If the vehicle VIN is between JM1BL*****144839 and JM1BL*****336666 / production date is between April 1, 2009 and June 1, 2010, select a sheet of pad 5mm in thickness from the "Noise Parts Set" (part number TA01-76-100) and cut two pieces to a size of 10mm x 25mm.
 - If the vehicle VIN is JM1BL*****336667 to JM1BL*****707082 / production date is after June 1, 2010 and before August 8, 2012, select a sheet of pad 3mm in thickness from the "Noise Parts Set" (part number TA01-76-100) and cut four pieces to a size of 10mm x 25mm.
7. Pull down the bracket to open a clearance between the tabs and the roof panel (more than 6mm).



8. Apply the pads (A) over the existing pads (B) on the tabs (C) while pulling the bracket (D) downward from the roof panel (E).
- If the vehicle VIN is between JM1BL*****144839 and JM1BL*****336666 / production date is between April 1, 2009 and June 1, 2010, apply one pad 5mm in thickness each on left and right side.
 - If the vehicle VIN is JM1BL*****336667 to JM1BL*****707082 / production date is after June 1, 2010 and before August 8, 2012, apply two pads 3mm in thickness (6mm total) each on left and right side.
- After applying the pads, take hand off the bracket and allow it to go back to its original position.



9. Install the map light.
 10. Verify repair.

PART(S) INFORMATION

Part Number	Description	Qty.	Notes
TA01-76-100	Noise parts set	1	5mm thickness pad for vehicles built before June 1, 2010. 8 vehicles can be repaired by one pad.
			3mm thickness pad for vehicles built after June 1, 2010 and before August 8 2012. 4 vehicles can be repaired by one pad.

WARRANTY INFORMATION

NOTE:

- This warranty information applies only to verified customer complaints on vehicles eligible for warranty repair.
- This repair will be covered under Mazda's New Vehicle Limited Warranty term.
- Additional diagnostic time cannot be claimed for this repair.

Vehicle production date before April 1, 2009

Warranty Type	A
Symptom Code	82
Damage Code	97
Part Number Main Cause	BBM7-69-97YC-75 (Overhead console)
Quantity	0
Operation Number / Labor Hours:	XXE4YXRX / 0.3 Hrs

NOTE: When you order one of the above pad kits for this repair, please claim as related part at first time repair. 8 vehicles can be repaired by one pad in set TA01-76-100.

Vehicle production date after April 1, 2009 and before August 8, 2012

Warranty Type	A
Symptom Code	82
Damage Code	97
Part Number Main Cause	BBM9-69-98XC (Overhead console bracket)
Quantity	0
Operation Number / Labor Hours:	XXE4YARX / 0.3 Hrs

NOTE: When you order one of the above pad kits for this repair, please claim as related part at first time repair. 8 vehicles can be repaired by one 5mm pad and 4 vehicles can be repaired by one 3mm pad in set TA01-76-100.