



# Service Bulletin

## PRELIMINARY INFORMATION

**Subject:** Rattle or Clunk Noise from Front End

**Models:** 2012 Chevrolet Sonic  
Built Prior to March 3, 2012

*This PI replaces PIC5591. Please discard PIC5591.*

### Condition/Concern

Some customers may comment on a rattle or clunk noise coming from the front suspension/struts when going over bumps but is gone or reduced when the brakes are applied.

This condition may be caused by the clearance between the pins and the related holes in the caliper brackets.

### Recommendation/Instructions

Technicians should duplicate the concern and replace the front caliper bracket, caliper guide pins and seals following the steps below:

1. Raise the vehicle and remove the tire and wheel assemblies.

**Note:** DO NOT use any air tools to remove or install the guide pin bolts. Use hand tools ONLY.

**Note:** Install an open end wrench to hold the caliper guide pin in line with the brake caliper while removing or installing the caliper guide pin bolt. DO NOT allow the open end wrench to come in contact with the brake caliper. Allowing the open end wrench to come in contact with the brake caliper will cause a pulsation when the brakes are applied.

2. Remove the brake calipers and support with heavy mechanics wire or equivalent.

**Note:** Note the location of the wear sensor for correct installation.

3. Remove the brake pads and brake pad springs.

**Note:** The upper brake caliper guide pin is equipped with a bushing and must be installed in the same location.

4. Remove the upper and lower brake caliper guide pins.

**Note:** Do not reuse the brake caliper bracket bolts.

5. Remove and discard the brake caliper bracket bolts.

6. Remove the brake caliper brackets.

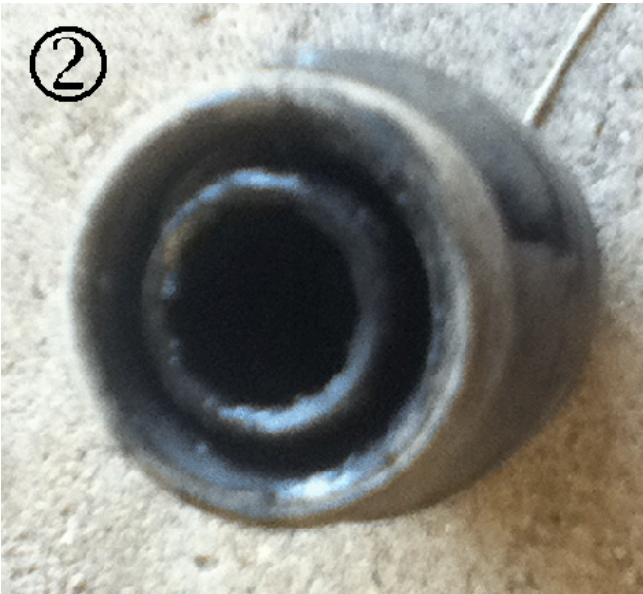
7. Install the new brake caliper brackets.

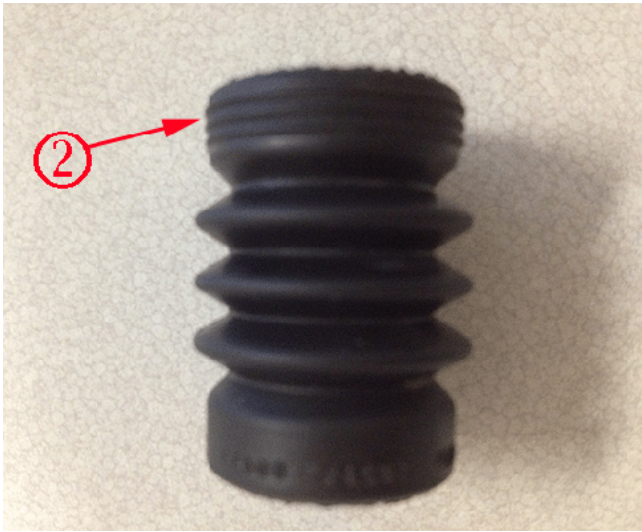
8. Install new brake caliper bracket bolts.

**Tighten:** Tighten the bolts to 100 Y (74 lb ft).

9. Install the brake pad springs and brake pads.

**Important:** Discard the guide pin seals that come with caliper guide pin kit (1) and use the newly designed seals from caliper guide pin seal kit (2) (P/N 13586073) shown below.





10. Install the new brake caliper guide pin seals.
11. Ensure the brake caliper guide pin seals are fully seated in the groove of the brake caliper bracket.  
**Note:** The upper brake caliper guide pin is equipped with a bushing and must be installed in the same location.
12. Lubricate and install the upper and lower brake caliper guide pins.
13. Ensure the brake caliper guide pin seals are fully seated in the groove of the brake caliper guide pins.  
**Note:** Note the location of the wear sensor for correct installation.
14. Install the inner and outer brake pads to the caliper bracket.
15. Using a backup wrench to hold the brake caliper guide pin stationary, install the brake caliper guide pin bolts (1).  
**Tighten:** Tighten the bolts to 28 Y (21 lb ft).
16. Install the tire and wheel assemblies and lower the vehicle.

## Parts Information

Part Number	Description	Quantity
13504035	PIN KIT, FRT BRK CLPR GDE	2
13586073	SEAL KIT, FRT BRK CLPR GDE PIN	4
13372780	BRACKET, FRT BRK CLPR	2
11516330	BOLT, FRT BRK CLPR	4

## Warranty Information

For vehicles repaired under warranty, use:

Labor Operation	Description	Labor Time
H9773*	Replace Both Front Brake Caliper Brackets	0.5 hr

\*This is a unique labor operation for bulletin use only. It will not be published in the Labor Time Guide.

GM bulletins are intended for use by professional technicians, NOT a "do-it-yourselfer". They are written to inform these technicians of conditions that may occur on some vehicles, or to provide information that could assist in the proper service of a vehicle. Properly trained technicians have the equipment, tools, safety instructions, and know-how to do a job properly and safely. If a condition is described, DO NOT assume that the bulletin applies to your vehicle, or that your vehicle will have that condition. See your GM dealer for information on whether your vehicle may benefit from this information.



WE SUPPORT VOLUNTARY TECHNICIAN CERTIFICATION