

# UPDATE Technical Bulletin



December 19, 2012

## UPDATE – 61B7 – Quality Package (NVLW) **UNITED STATES ONLY**

### NOTE:

- Perform this UPDATE on all applicable vehicles within NEW VEHICLE LIMITED WARRANTY.
- It is MANDATORY to perform UPDATES on all applicable vehicles in dealer inventory PRIOR TO RETAIL SALE.
- Inform customers that this UPDATE will be available free of charge as long as their vehicle is within the Warranty parameters outlined in this UPDATE.

### NOTE:

**Required DMS Wording//Text: (line item, customer concern description on repair order):**

UPDATE 61B7 – Quality Package

Model(s)	Year	Engine Code	Trans. Code	From	To
Beetle Convertible	2013	All	All	3VW__AT_CM800257	3VW__AT_DM805154
Jetta Hybrid	2013	All	All	3VW__AJ_DM200037	3VW__AJ_DM233384

### REVISION HISTORY

Revision	Date	Purpose
1	December 19, 2012	Original publication

## Condition

This update has been proactively released to prevent install the latest available quality countermeasures from production.

This UPDATE is in effect until removed.

Vehicle must meet all of the following criteria:

- Procedure is valid only for vehicles that show the 61B7 code in ElsaWeb, Campaign/Action Information screen on the day of repair.
- If the vehicle is sold it must be within the NEW VEHICLE LIMITED WARRANTY.
- Procedure must be performed within the allotted time frame stated in this UPDATE.
- Procedure must be performed on applicable vehicles in dealer inventory prior to sale.



---

## Technical Background

This document addresses up to three (3) concerns on affected vehicles as follows:

- Update software in the convertible top module to improve top function.
- Adaptation to optimize fuel gauge operation.
- Install conductive windshield washer fluid for correct sensor functionality.

## Production Solution

Quality improvements currently in production.

## Service

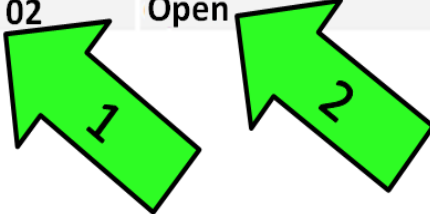
### **NOTE:**

- *ElsaWeb is the only valid inquiry/verification source. Check ElsaWeb on the day this vehicle UPDATE will be performed to verify vehicle eligibility for the UPDATE. Status must show "open". Attach an ElsaWeb printout showing the "open" status to the repair order.*
- *If this UPDATE appears to have already been performed but the code still shows open in ElsaWeb, contact Warranty before proceeding further. Another dealer may have recently performed this UPDATE but not yet entered a claim for it in the system.*
- *ElsaWeb may also show additional open action(s); if so, inform your customer - this work can be done while the vehicle is in for this UPDATE.*
- *Contact the Warranty Helpline if you have any questions.*



## Work Procedure:

Applicable Criteria ID (s)	Campaign/Action Status
01, 02	Open



## Section A – Identify Criteria and Check for Open Status



**Tip:** On the date of repair, print this screen and keep a copy with the repair order.

- Enter the VIN in ElsaWeb and proceed to the “Campaign/Action” screen.
- ← Ensure that the Status is “Open” <arrow 2>.
- ← Note all Applicable Criteria ID <arrow 1> for use in determining the correct work to be done and associated parts.



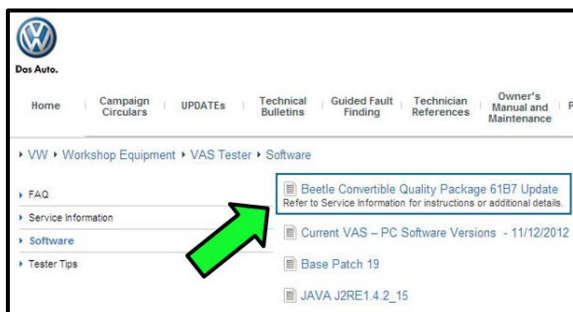
**Tip:** Vehicle may have more than one applicable Criteria. Follow the work procedure for each applicable Criteria to ensure all necessary repairs are performed.

## Continue to applicable Section(s)

## Section B – Convertible Top Module Software



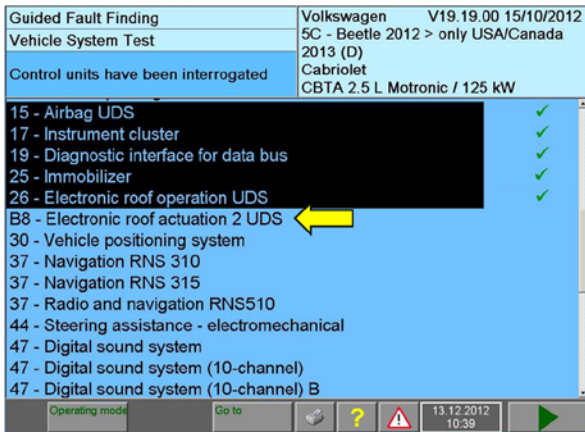
**Tip:** Perform this section only if Criteria 01 is applicable.



**Note:** If Utilizing VW CD Brand 19.20.00 or lower, the VAS Tester must be updated with patch files prior to beginning this software update. The files are located on Service Net >>Workshop Equipment >> VAS Tester >> Software >> “Beetle Convertible Quality Package 61B7 Update”<arrow>.



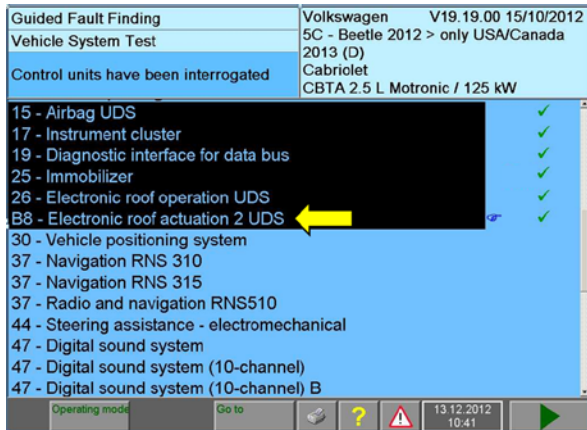
- Go to Vehicle Self Diagnosis (VSD)
- Select “26 – Electrical roof actuation”
- Select “003 – Identification”
- Select “003.01 – Identification Master”
- Select “Software version”
- Current software level of convertible top module is displayed.
- If value is “344” Work Complete for Criteria 01.
- **If value is lower than “344”** Continue Work Procedure.



- Connect battery charger/maintainer to vehicle to ensure minimum no load voltage of 12.5V to 13.5V is maintained.
  - Turn ignition on.
  - Connect VAS tester to the vehicle.
  - Enter Guided Fault Finding (GFF) and select correct vehicle information to begin control module interrogation.
- ⇐ After control module interrogation is complete, check to see if “B8 – Electronic roof actuation 2 UDS” <arrow> was interrogated.

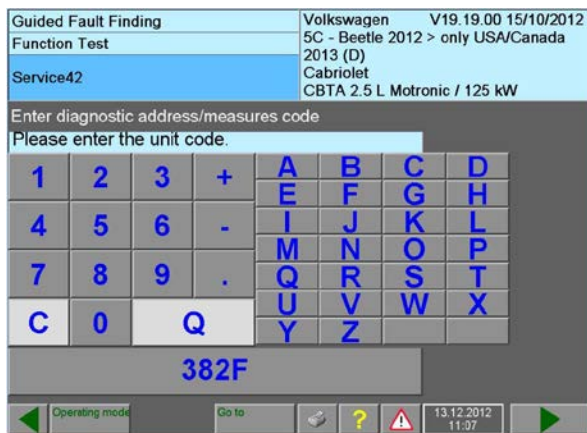


**Tip:** On some models, address word B8 – “Electronic roof operation UDS” <arrow> may not be automatically detected during the GFF scan.



← If necessary, manually highlight the “B8 – Electronic roof actuation 2 UDS” <arrow> as shown.

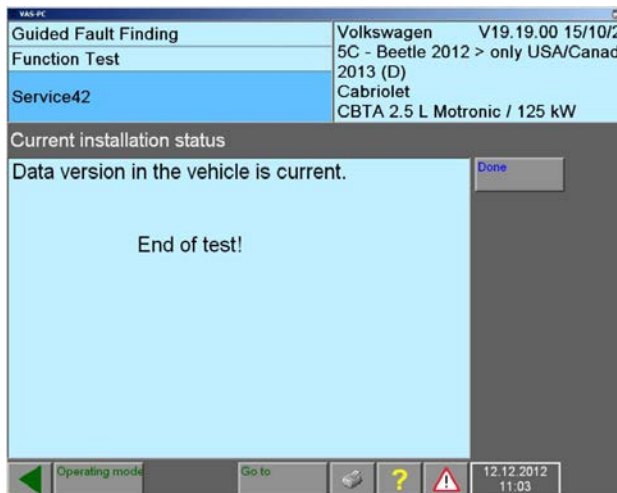
- Press the forward arrow to continue.



- Select Go to
- Select Function/Component Selection
- Proceed to Software Version Management (SVM) and update both convertible top control modules using SVM code **382F**.



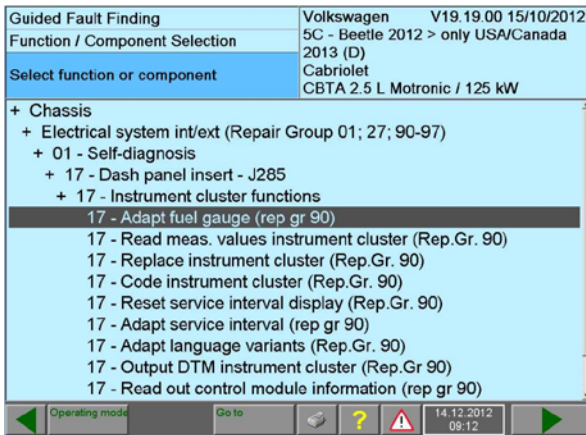
**Tip:** Both modules are updated by entering this SVM code. It is not necessary to perform two separate updates.



- Follow the test plan until “End of test!” appears.
- Exit GFF and disconnect VAS tester and battery charger from vehicle.
- Work Complete for Criteria 01.
- **If necessary, Continue to applicable Section(s).**

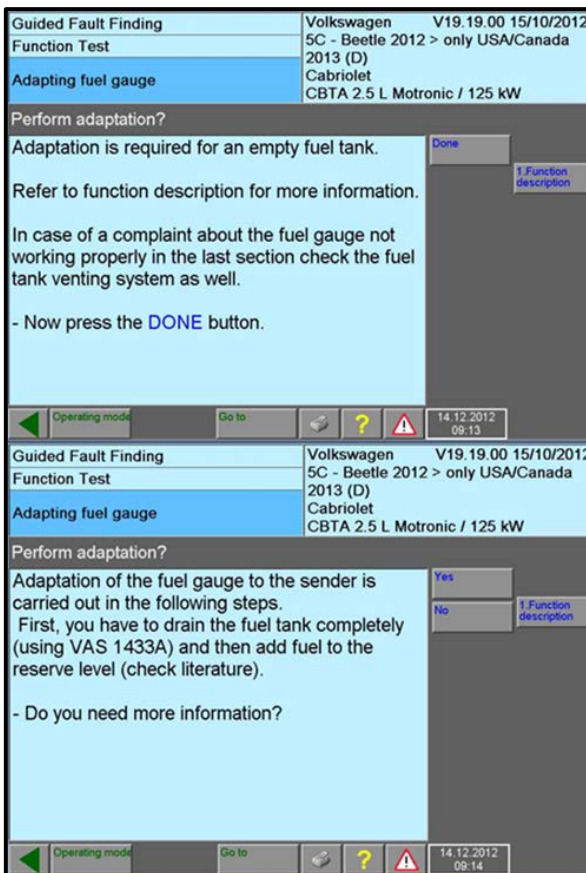


## Section C – Fuel Gauge Adaptation



**Tip:** Perform this section only if Criteria 02 is applicable.

- Connect the VAS tester to the vehicle and switch the ignition on (15 power).
- Select “Guided Fault Finding” and scan the vehicle accordingly.
- Select “Go to”
- Select “Function/component selection”.
- Select “Chassis”
- Select “Electrical Systems int/ext”
- Select “01 – Self-diagnosis”
- Select “17 – Dash Panel Insert J285”.
- Select “17 – Instrument cluster functions”.
- Select “17 – Adapt fuel gauge”



**Note:** These two screens are displayed before entering the test plan. DO NOT drain the fuel tank. Ignore these prompts and continue to the test plan. **Fuel level will not affect this adaptation procedure.**



- Begin the fuel gauge adaptation test plan and follow the on screen prompts.
- The adaptation value begins at +10° and counts down in .5° increments.
- When the value on the screen reaches -3° press the forward arrow.
- When this confirmation screen (left) is



**Tip:** If a value other than -3° is displayed here, simply restart the adaptation procedure and set the value to -3°.

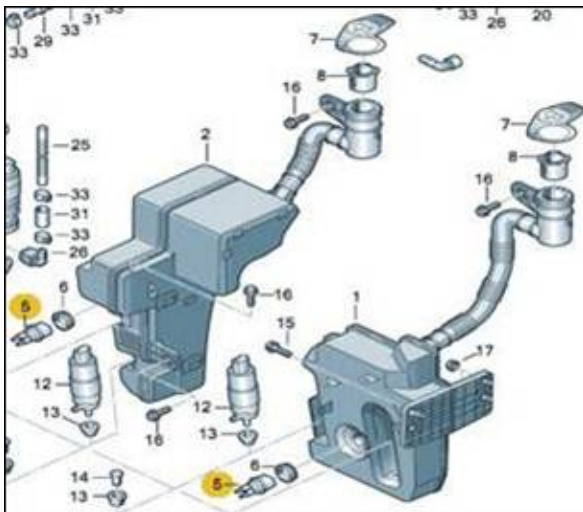
displayed the adaptation is complete.

- Work Procedure Complete for Criteria 02.
- **If necessary, Continue to applicable Section(s).**

## Section D – Washer Fluid



**Tip:** Perform this section only if Criteria 03 is applicable.



- Remove wheel and wheel housing liner according to ElsaWeb repair manual.
- Check wiring harness and connector for washer fluid reservoir sensor (Item 5).
- If wiring is ok, drain existing washer fluid and replace with fluid part number (G 052 164 M1 – or equivalent) mixed accordingly.
- Ensure low fluid level indicator lamp is not illuminated.
- Reinstall wheel housing liner and wheel.
- Torque wheel nuts as specified in ElsaWeb repair manual to 140Nm.
- Work Complete for Criteria 03
- **If necessary, Continue to applicable Section(s).**

**WORK IS COMPLETE ONLY AFTER all applicable Criteria have been performed.**



## Warranty

<b>Claim Entry Procedure</b>	Enter your claim immediately upon completion of the UPDATE. Claims will only be paid for vehicles that show this UPDATE code open in ElsaWeb on the day of repair. To help ensure prompt and proper payment, attach the screen print to the repair order.
<b>Claim Help</b>	<b>U.S. dealers</b> - Contact the <b>Warranty Helpline</b> toll-free at 1-866-306-8447 for help with claim entry.
<b>Required Customer Notification</b>	Ensure customers are aware of all work performed on the vehicle by recording the information on the repair order.  Attach a copy of the <i>Vehicle UPDATE Fact Sheet</i> to the customer's copy of the repair order and take the time to explain this UPDATE to your customer.



# UPDATE Technical Bulletin



## SAGA Code 61B7 Claim Entry Procedure

Check ElsaWeb to confirm that this UPDATE code is open on the day of repair.

Service No.: 61B7

Damage Code: 0099

Parts Manufacturer/Vendor Code: 3ME

### Claim Type

Sold vehicle = 7 10

Unsold vehicle = 7 90

### Accounting Instructions:

#### -- If Applicable --

Criteria I.D. 01

Check/UPDATE present. No further work required.

Repair operation: 0183 00 99 10 TU

-- OR --

Check/UPDATE not present. Install new software.

Repair operation: 6196 25 99 50 TU

#### -- AND/OR If Applicable --

Criteria I.D. 02

Adapt fuel gauge.

Repair operation: 9025 25 99 30 TU

#### -- AND/OR If Applicable--

Criteria I.D. 03

Remove and install new washer fluid.

Repair operation: 9258 19 99 50 TU

**Vehicles may have more than one criterion. Complete and claim ALL applicable criteria on one claim.**

**When claiming washer fluid, use only the part number & quantity shown below even if an equivalent was used.**

Quantity	Part Number	Part Description
1	G 052 164 M1	Washer Fluid

***There is NO reimbursement for wash or loaner vehicle!***

**If vehicle is not eligible for repair under this UPDATE (i.e.: totaled status) OR if customer refused repairs.**

Fax the Repair Order to VWoA at (248) 754-5093 and provide VIN, applicable Service Number, Customer Information, Dealer Number and Date



## Required Parts and Tools

Part Description	Part No:	Quantity
Windshield Washer Fluid	G 052 164 M1 (or equivalent)	1

Tool Description	Tool No:	Quantity
VAS Tester	VAS 6150A (or equivalent)	1

## Additional Information

All part and service references provided in this Technical Bulletin are subject to change and/or removal. Always check with your Parts Dept. and Repair Manuals for the latest information.

# UPDATE Technical Bulletin



---

## UPDATE FACT SHEET – UPDATE Code 61B7

Dear Volkswagen Customer,

Today we performed UPDATE code 61B7 on your vehicle. This UPDATE ensures that the latest available quality solutions were installed. This UPDATE was performed for you free of charge.

Volkswagen periodically makes updates like this available in order to ensure our customer's continued satisfaction with the quality of their Volkswagen vehicles.

We at Volkswagen are committed to providing our customers with reliable, quality products that are a pleasure to drive and own. If you should ever have any questions or vehicle concerns, your authorized Volkswagen dealer will be pleased to assist you.

Thank you for driving a Volkswagen!