

# Technical Bulletin

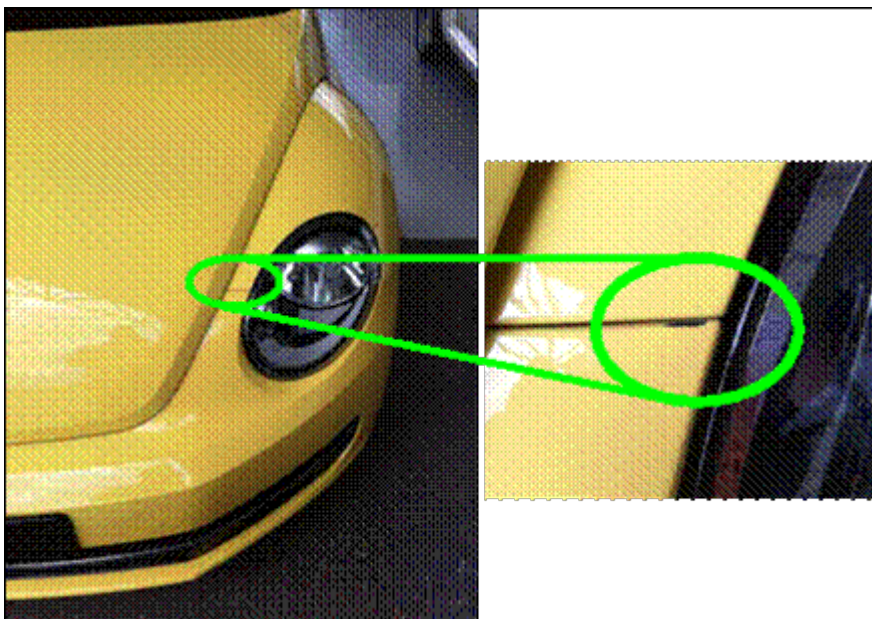
Model(s)	Year	Eng. Code	Trans. Code	VIN Range From	VIN Range To
Beetle	2012	All	All	AT_CM000001	AT_CM625537

## Condition

63 12 01 December 14, 2012 2032093

### Paint Chafe between Front Bumper Cover and Fender

Customer may identify a paint chafe due to the misaligned between bumper cover and fender (quarter panel, See Figure 1.).



Paint chafe condition

Figure 1

# Technical Bulletin

---

## Technical Background

Contact friction between front bumper cover and fender.



**Note:**

If vehicle is outside normal warranty policy, this bulletin will be considered information only.

## Production Solution

Distance between front fender and bumper cover was secured in production starting from VIN: AT\_CM625537.

## Service



Adjust attachment between bumper cover and fenders with a 2.0 mm (0.07874 in) gap gauge.

Figure 2

# Technical Bulletin

---

## Procedure

- Remove front head lamps, see Repair Group 94 in ElsaWeb.
- Remove front bumper cover, see Repair Group 50 in ElsaWeb.
- Repair paint chafe area.
- Install bumper cover and align following the procedure below.

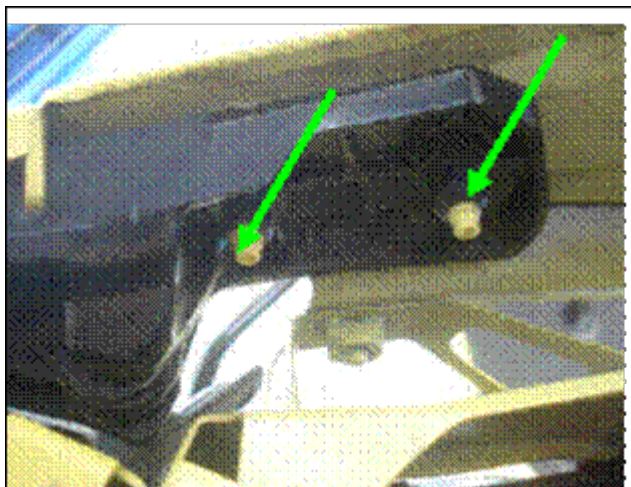


Figure 3

- Loosen plastic nuts from bumper cover guide without removing the nuts to let guide move.

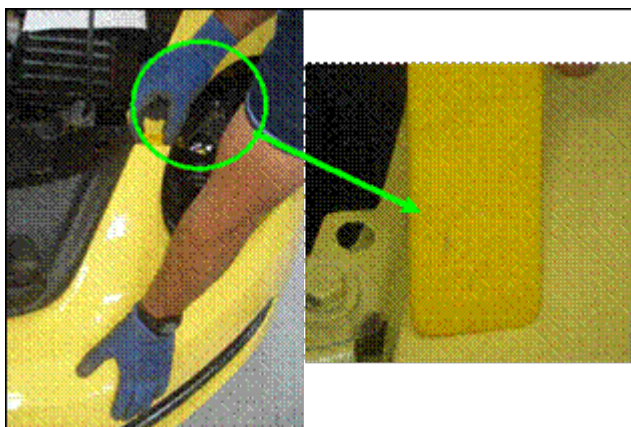


Figure 4

- Push bumper cover downward with one hand and place the 2.0 mm gap gauge between bumper cover and fender with the other hand.

# Technical Bulletin



Figure 5

- Tighten the bumper cover guide plastic nuts with a 3.0 N +/- 0.5 torque.



**Note:**

**By pushing bumper cover downward again to prevent paint damage, make sure there is no longer contact between bumper cover and fender, and remove gap gauge.**



Figure 6

- Push bumper cover downward with one hand and remove the gap gauge with the other hand in order to prevent paint damage.
- Check there is no longer contact between front bumper cover and fender with a 1 mm gap gauge.



**Note:**

**A .08mm +/- .02mm gap must be secured between front bumper cover and fender.**

- Mount the headlamps back on the vehicle, see Repair Group 94 in ElsaWeb.

# Technical Bulletin

## Warranty



**Note:**

**Paint damage from misaligned panels is not a paint defect. Claim types 950 and 150 do not apply to this repair.**

<b>To determine if this procedure is covered under Warranty, always refer to the Warranty Policies and Procedures Manual <sup>1)</sup></b>					
<b>Model(s)</b>	<b>Year(s)</b>	<b>Eng. Code(s)</b>	<b>Trans. Code(s)</b>	<b>VIN Range From</b>	<b>VIN Range To</b>
Beetle	2012	All	All	AT_CM000001	AT_CM625537
<b>SAGA Coding</b>					
<b>Claim Type:</b>			<b>Use applicable Claim Type <sup>1)</sup></b>		
<b>Service Number:</b>	<b>Damage Code</b>	<b>HST</b>		<b>Damage Location (Depends on Service No.)</b>	
6329	0030	--		Use applicable when indicated in ElsaWeb (L/R)	
		<b>Beetle</b>		<b>3ME <sup>2)</sup></b>	
<b>Labor Operation <sup>3)</sup> : Remove and Install Headlamp (Xenon)</b>			94151910 = 40 TU		
<b>Labor Operation <sup>3)</sup> : Remove and Install Headlamp (Halogen)</b>			94151900 = 30 TU		
<b>Labor Operation <sup>3)</sup> : Remove and Install Front Bumper Cover</b>			63291900 = 70 TU		
<b>Labor Operation <sup>3)</sup> : Modify Front Bumper Cover</b>			63290599 = 20 TU		
<b>Causal Part:</b>			Select labor operation 63290599		
<b>Labor Operation <sup>3)</sup> : Body Damage</b> <b>Note: In case of body damage, repairs are not to exceed ElsaWeb SRT</b>			Refer to Volkswagen Warranty Paint and Corrosion Claim Coding Manual		



# Technical Bulletin

If the repairs are sublet, please use the following part number in "Outside Materials"	<ul style="list-style-type: none"> <li>LACKMATF: Paint and Materials</li> </ul>	
If the repairs are sublet, please use the following part number in "Outside Labor"	<ul style="list-style-type: none"> <li>L0010000: External Painting-straight color</li> <li>L0020000: External Painting-metallic/2-layer</li> <li>L0030000: External Painting-pearl color</li> <li>A0041000: Body Shop repair no paint</li> </ul>	
<b>Diagnostic Time <sup>4)</sup></b>		
GFF Time expenditure	01500000 = 00 TU max.	NO
Road Test	01210002 = 10 TU 01210004 = 10 TU	NO
Technical Diagnosis	01320000 = 00 TU max.	NO
<b>Claim Comment: Input "As per Technical Bulletin 2032093" in comment section of Warranty Claim.</b>		
<p>1) Vehicle may be outside any Warranty in which case this Technical Bulletin is informational only</p> <p>2) Code per warranty vendor code policy.</p> <p>3) Labor Time Units (TUs) are subject to change with ELSA updates.</p> <p>4) Documentation required per Warranty Policies and Procedures Manual.</p>		

## Required Parts and Tools

No special parts required.

Part Description	Part No:	Quantity
Adjustment Gauge	3371	1

## Additional Information

All part and service references provided in this Technical Bulletin are subject to change and/or removal. Always check with your Parts Dept. and Repair Manuals for the latest information.