

**HYUNDAI**NEW THINKING.
NEW POSSIBILITIES.**Technical Service Bulletin**

GROUP

CAMPAIGN

MODEL

AZERA (HG)

DATE

DECEMBER 2012

NUMBER

12-01-048**SUBJECT: AZERA (HG) 3.3L ECM UPDATE – (SERVICE CAMPAIGN TN5)**HYUNDAI
Global Diagnostic System**ECU Update***** IMPORTANT*********DEALER STOCK ONLY*******

Dealers must perform this Campaign on all affected vehicles prior to customer retail delivery.

When a vehicle arrives at the Service Department, access Hyundai Motor America's "Warranty Vehicle Information" screen via WEBDCS to identify open Campaigns.

Description:

This bulletin provides information for an ECM update of some Azera (HG) 3.3L GDI vehicles to revise the logic for the following DTC:

- P0451 Evaporative Emission System-Pressure Sensor Range/Performance

Note: There are no performance issues associated with this condition.

Applicable Vehicles:

- 13 MY Azera (HG) 3.3L GDI vehicles

GDS Information:

EVENT #	DESCRIPTION
292	"HG 3.3 P0451 DTC LOGIC IMPROVEMENT."

Warranty Information:

Model	Op Code	Operation	Op Time
AZERA (HG)	20C120R1	ECM UPGRADE	0.3M/H

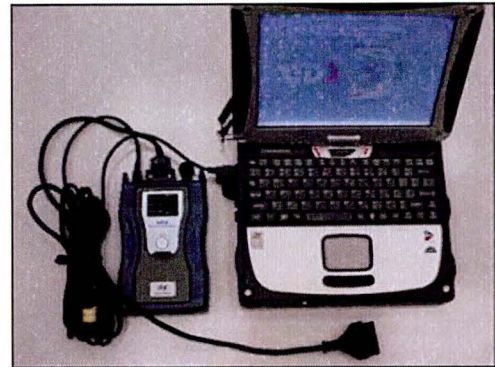
ROM ID INFORMATION TABLE:

Verify the ECM ROM ID before updating the vehicle's software. Refer to the table below.

Model	Engine	ECM P/N	ECM ROM ID	
			Previous	New
AZERA(HG)	3.3 GDI	39110-3CHN1	HGDN33GM2A6CL1A*	HGDN33GM2A6CL1B*

GENERAL PRECAUTIONS:

- Connect the USB cable between the GDS and the VCI.
- Connect the 16-pin DLC connector from the VCI into the DLC located under the driver's side dash.



*** NOTE**

Make sure the battery icon at the bottom right of the GDS laptop shows at least 50%; if not, charge the GDS or attach a battery charger.

- Turn off all lights (Do not leave the headlight switch in auto mode) and all accessories (including heater/air conditioner/fan, audio, heated seats, rear defroster, etc) to ensure the battery will not be discharged during the update.
- Perform the update with the ignition key in the ON position.
- Do not disconnect any cables connected to the vehicle or the GDS during the update.
- Do not start the engine or turn the ignition switch OFF during the update.

*** NOTE**

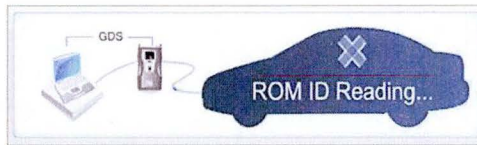
Confirm your GDS has the most recent version. If not, connect the GDS to an Internet port, open the GDS home page and select "Update". Refer to instructions on hmaservice.com if necessary.

If you encounter GDS related problems, call the GIT Helpline at 888-437-0308.

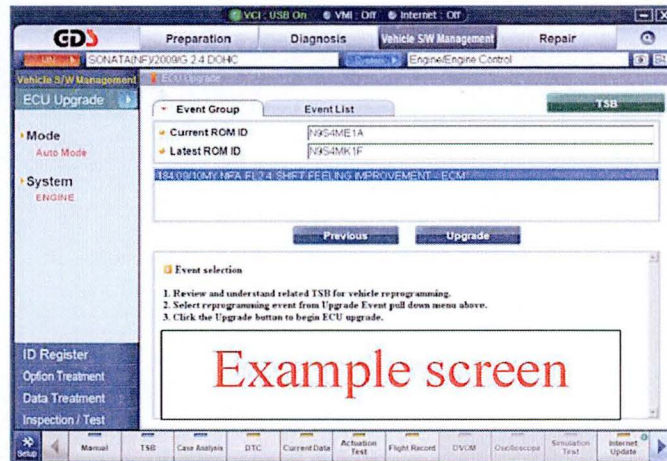
SERVICE PROCEDURE:

GDS AUTO MODE ECM UPDATE PROCEDURE

1. From the GDS home page, select **ECU Upgrade**. If necessary, select the VIN.
2. Select **Engine** as the system and then select **OK**.
3. Select **Auto Mode** and then select **Next**.
4. From the **System** tab, select **Engine** and then select **OK**. The GDS will read the ROM ID. Confirm the ROM is applicable as shown on Page 1, “ROM ID Information”.



5. Select update event as listed on the **GDS Event list of page-1**. Select **Upgrade**.



6. If the screen indicates “**Voltage is OK**” (voltage > 12volts), select **OK**. If not, select **CANCEL** and charge the vehicle battery by running the engine for 10 minutes.
7. Updating will occur until 100% is reached on the bar graph. At the prompt, turn the ignition key OFF for 10 seconds, then turn it ON and select **OK**.
8. The GDS will confirm that ECM reprogramming is successfully finished. Select **OK**.
9. If the ECM update was not successful, go to **GDS MANUAL MODE ECM UPDATE PROCEDURE**.
10. Check for DTC in all systems and Erase All DTC that stored due to loss of CAN communication during the ECM Update.
11. Turn **OFF ignition 10 seconds** then turn **ON** before going to engine start.
12. Start the engine to confirm proper operation.

*** NOTE:**

In event of AUTO MODE update failure:

- You must attempt MANUAL MODE. Use the ECM P/N from the vehicle's ECM label if it is not clear from the ROM ID Table as to the correct ECM P/N to use for your vehicle.
- Replacing an ECM without carefully documenting that a MANUAL MODE update attempt was made, will result in claims charge back.

GDS MANUAL MODE ECM UPDATE PROCEDURE

*** NOTE**

- GDS Manual Mode is intended for recovery of an ECM Update should it begin but then later fail in process in the Auto Mode.
- The ECM connectors must be disconnected for 15 minutes to reset its contents then perform this Manual Mode Update.
- Do not force Manual Mode if you get an error in Auto Mode that the vehicle's current ROM ID did not apply.
- It is critical to identify the correct ECM Part Number in the PASSWORD table or the ECM may be permanently damaged. It is recommended to remove ECM and read the part number from the label to confirm.

1. From the GDS home page, select **ECU Upgrade**. If necessary, select the VIN.
2. Select **Engine** as the system and then select **OK**.
3. Select **Manual Mode** and then select **Next**.
4. From the **System** tab, select **Engine** and then select **OK**.
5. Select update event as per the **GDS Event List of page-1**, then select **Upgrade**.
6. Be certain to enter the exact appropriate password from the table below and select **OK**. **See the important NOTE above.**
7. The remaining steps are same as Steps 6~12 of the Auto Procedure.

MENU	PASSWORD
HG 3.3 IMMO : 39110-3CHN1	1031