

NUMBER: 23-033-12

GROUP: Body

DATE: October 23, 2012

This bulletin is supplied as technical information only and is not an authorization for repair. No part of this publication may be reproduced, stored in a retrieval system, or transmitted, in any form or by any means, electronic, mechanical, photocopying, or otherwise, without written permission of Chrysler Group LLC.

SUBJECT:

Rear Fascia Underflush At Quarter

OVERVIEW:

This bulletin involves replacing the two plastic outer push clip fascia retainers in the lift gate area with a rivet nut and threaded fastener.

MODELS:

2011 - 2012 (MK)

Jeep Compass

SYMPTOM/CONDITION:

The customer may notice the rear fascia becomes underflush to the rear quarter (Fig. 1).

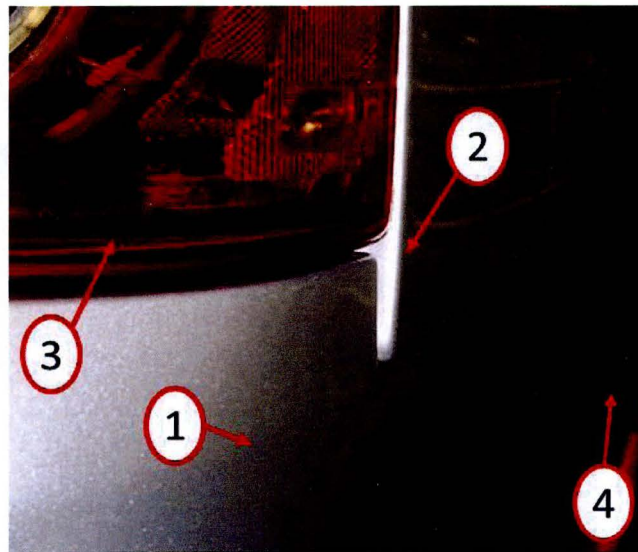


Fig. 1 Rear Fascia Underflush At Quarter

- 1 - Rear Fascia (Passenger Side Shown)
 - 2 - Rear Quarter (Passenger Side Shown)
 - 3 - Rear Tail Lamp Assembly (Passenger Side Shown)
 - 4 - Passenger Rear Wheelhouse
-

DIAGNOSIS:

If the customer describes the symptom/condition, perform the Repair Procedure.

PARTS REQUIRED:

Qty.	Part No.	Description
2	06504710	Rivet, Nut
2	06508183AA	Bolt, Rear Fascia

NOTE: Rivet nuts can be installed properly using readily available shop supplies. Any M6(6mm) x (1"/25mm) length bolt and a (3/32"/2mm thick) piece of flat stock or sheet metal with a (6mm) hole drilled into it (Fig. 4) can be used to install the above rivet nuts. The flat stock or sheet metal used must be a long enough section to hold and prevent rotation or possible personal injury and/or paint damage may result. If these supplies are not available, refer to the hardware listed in Special Tools/Equipment to create a rivnut installation tool (Fig. 2).

SPECIAL TOOLS/EQUIPMENT REQUIRED:

NPN	Bolt, M6(6mm) x (25-30mm Long)
NPN	Flat Washers, M6(6mm) or 1/4" (Qty 2) NOTE: Must be hardened to prevent deforming
NPN	Hex Nut, 1/4", M7(7mm) or M8(8mm)

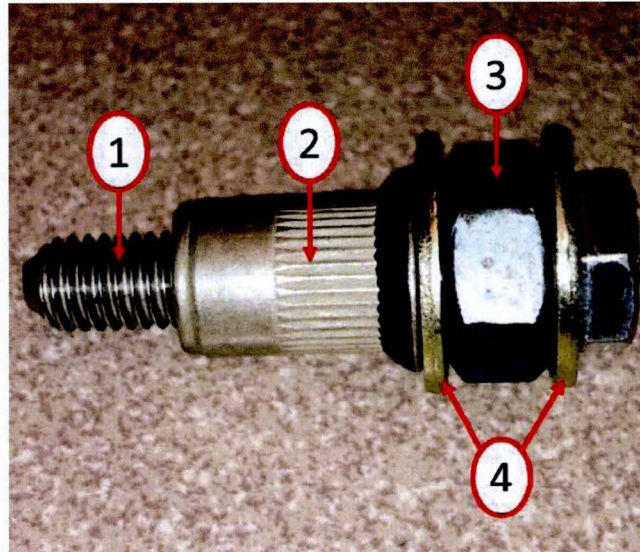


Fig. 2 Rivnut Tool

- 1 - Bolt, M6-(6mm x 30mm)
- 2 - Rivet Nut (PN 06504710)
- 3 - Hex Nut (1/4", M7(7mm) or M8(8mm))
- 4 - Hardened Flat Washers (M6(6mm) or 1/4")

REPAIR PROCEDURE:

1. Remove the rear fascia. Refer to the detailed procedures available in DealerConnect >TechCONNECT > under: Service Info > 13 - Frame and Bumpers > Bumpers > FASCIA, Rear > Removal.
2. Remove the push clip grommets from the body in each corner of the lift gate area (1) as shown in (Fig. 3).

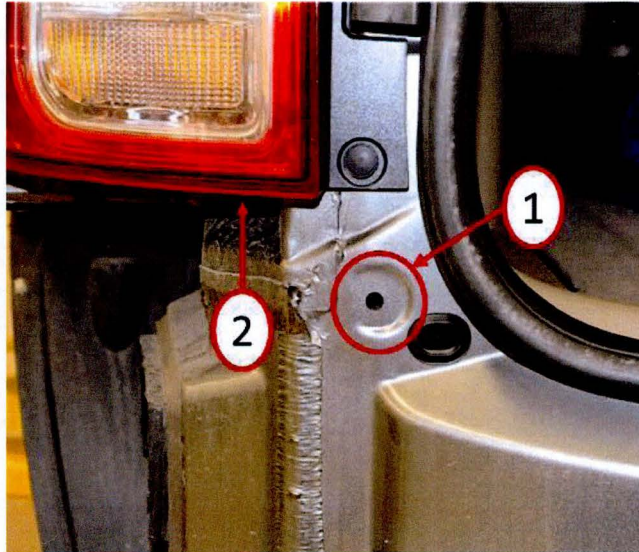


Fig. 3 Push Clip Grommet Removal

- 1 - Push Clip Grommet Removed
- 2 - Rear Tail Light

3. Install a rivet nut (1) into each of the existing push clip grommet holes as shown in (Fig. 4) and compress them to 10 ft/lb.(120in/lb./13.5nm).

NOTE: If a piece of flat stock or sheet metal and a 6mm bolt (2) (Fig. 4) are not available, use the specified rivnut installation tool listed in Special Tools/Equipment to install the rivet nut. While holding the oversized hex nut (3) (Fig. 2), tighten the M6 bolt (1) (Fig. 2) and compress it into the body.

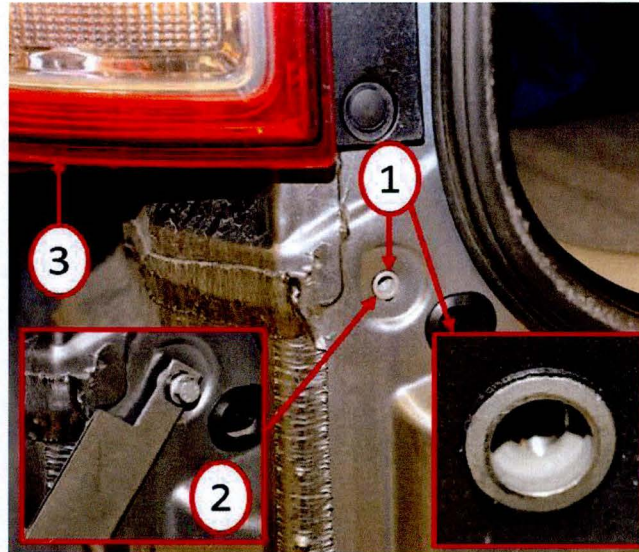


Fig. 4 Rivet Nut Installation

- 1 - Rivet Nut
- 2 - Rivet Nut Installation Tool
- 3 - Rear Tail Light

-
4. Loosely install the rear fascia onto the vehicle and finger tighten the rear fascia bolts (2) (Fig. 5).
 5. While pulling the fascia outward (1) to bring it flush with the quarter panel, hand tighten the rear fascia bolt (2) on each side of the vehicle (Fig. 5).

NOTE: If either side of the fascia is slightly under or over flush to the quarter panel once the rear fascia bolts are hand tightened it may be necessary to remove the fascia from that side in order to finesse (lightly tap) the bolt in the desired direction (3) to bring the fascia flush to the quarter panel once the bolts are tightened (Fig. 5).

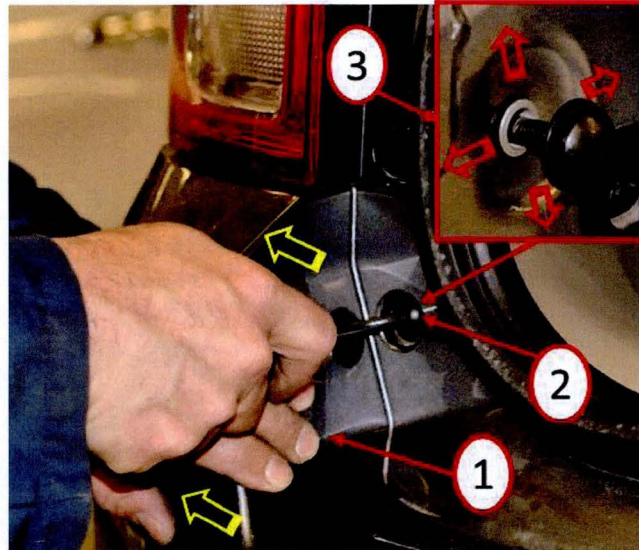


Fig. 5 Rear Fascia Installation And Adjustment

- 1 - Rear Fascia (Pull Flush to Quarter Panel)
- 2 - Rear Fascia Bolt
- 3 - Rear Fascia Bolt Adjustment

6. Finish installing the rear fascia onto the vehicle. Refer to the detailed procedures available in DealerConnect >TechCONNECT > under: Service Info > 13 - Frame and Bumpers > Bumpers > FASCIA, Rear > Installation.

POLICY:

Reimbursable within the provisions of the warranty.

TIME ALLOWANCE:

Labor Operation No:	Description	Amount
13-20-05-97	Remove Rear Fascia / Install Rivet Nut and Fastener - Left and Right Side (Skill Level = B, Training Level = 3)	0.5 Hrs.

FAILURE CODE:

ZZ	Service Action
----	----------------