

NUMBER: 07-006-12

GROUP: Cooling

DATE: October 11, 2012

This bulletin is supplied as technical information only and is not an authorization for repair. No part of this publication may be reproduced, stored in a retrieval system, or transmitted, in any form or by any means, electronic, mechanical, photocopying, or otherwise, without written permission of Chrysler Group LLC.

THIS SERVICE BULLETIN IS ALSO BEING RELEASED AS RAPID RESPONSE TRANSMITTAL (RRT) 12-059. ALL APPLICABLE SOLD AND UN-SOLD RRT VIN's HAVE BEEN LOADED. TO VERIFY THAT THIS RRT SERVICE ACTION IS APPLICABLE TO THE VEHICLE, USE VIP OR PERFORM A VIN SEARCH IN TECHCONNECT. ALL REPAIRS ARE REIMBURSABLE WITHIN THE PROVISIONS OF WARRANTY.

SUBJECT:

Excessive Flash Material on Coolant Overflow Bottle

OVERVIEW:

This bulletin involves inspecting the coolant recovery bottle and replacing it as necessary.

MODELS:

2013 JK Wrangler

NOTE: This bulletin applies to vehicles equipped with the 3.6L engine (Sales Code ERB) built on July 25, 2012 (MDH 0725XX) or July 26, 2012 (MDH 0726XX).

SYMPTOM/CONDITION:

Some vehicles may have been built with a coolant recovery bottle that may have excessive blow molding flash material on the coolant overflow hose nipple.

DIAGNOSIS:

If a customer's VIN is listed in VIP or your RRT VIN list, perform the repair. For all other customers that describe the symptom/condition, perform the Repair Procedure.

PARTS REQUIRED:

Qty.	Part No.	Description
AR (1)	68091500AC	Bottle, Coolant Recovery
AR (1)	68163849AA	Coolant, Mopar Engine OAT (U.S. 50/50 mix)
AR (1)	68175337AA	Coolant, Mopar Engine OAT (Mexico 50/50 mix)
AR (1)	68175339AA	Coolant, Mopar Engine OAT (Canada 50/50 mix)

REPAIR PROCEDURE:

1. Remove coolant recovery bottle from cooling module. Pull the bottle directly upward to disengage it from fan shroud.

NOTE: The coolant overflow hose will still be connected between the coolant recovery bottle and the radiator.

2. Pour the coolant in the recovery bottle into a clean container. The coolant will be re-used. Make sure the container is free of debris and contaminants.
3. Pull and twist coolant overflow hose with necessary force to detach it from the coolant recovery bottle.
4. Inspect the coolant recovery bottle overflow hose nipple for signs of excessive flash material (Fig. 1). The outside diameter of the nipple surface should be free from flash and no parting line should be felt. Inspect the opening of the nipple. Confirm that the hole is free of flash and fully open (Fig. 2).

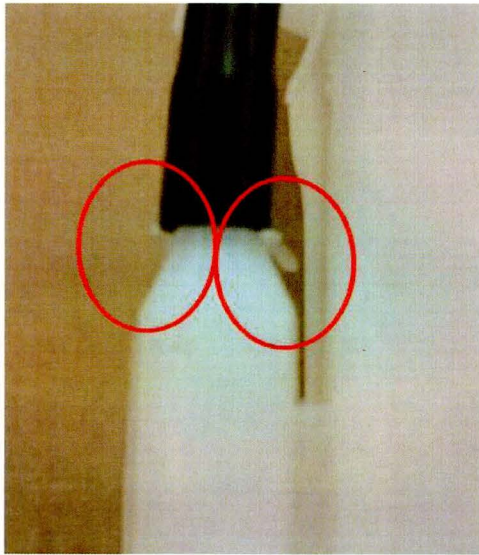


Fig. 1 Excessive Flash On Coolant Bottle Nipple - Hose Attached



Fig. 2 Excessive Flash On Coolant Bottle Nipple - Hose Removed

5. Was excessive flash material found on the exterior or the opening of the coolant recovery bottle overflow hose nipple?
 - a. YES>>>Replace the Coolant Recover Bottle (p/n 68091500AC) and proceed to the next step.
 - b. NO>>>Proceed to the next step.
6. Install the coolant overflow hose onto the coolant recovery bottle until it reaches the stop bead on the bottle (Fig. 3).

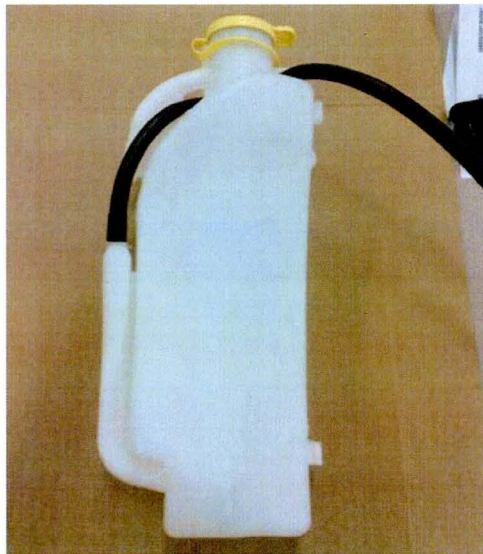


Fig. 3 Coolant Bottle

7. Install the coolant recovery bottle onto the fan shroud. Confirm both the upper and lower attaching tabs are installed into the fan shroud then push directly downward until the bottle snaps into position. There is a round dimple on the bottle which seats into a hole on the fan shroud. Confirm the bottle is fully installed by pulling upward to check the bottle retention on the shroud.

8. Fill the coolant recovery bottle with the coolant saved from [Step #2](#). Coolant volume in bottle should be between the MIN and the MAX fill lines as shown on the outside of the bottle. If additional coolant is required to meet the MIN fill line, add Mopar OAT (purple in color) Engine Coolant (see parts list).

CAUTION: Chrysler Corporation LLC. has released a new engine coolant for the 2013 model year Wrangler. This new coolant is an Organic Additive Technology (OAT). Coolants of different technologies are not compatible nor interchangeable (OAT, HOAT or IAT). If these coolants are mixed, accelerated corrosion within the engine and cooling system could result. Use only engine coolants specified in this bulletin for 2013 Wrangler cooling systems.

POLICY:

Reimbursable within the provisions of the warranty.

TIME ALLOWANCE:

Labor Operation No:	Description	Amount
07-30-45-90	Bottle, Coolant Recover - Inspect (Skill Level = D; Training Level = 1)	0.2 Hrs.
07-30-45-91	Bottle, Coolant Recover - Inspect and Replace (Skill Level = D; Training Level = 1)	0.2 Hrs.

FAILURE CODE:

ZZ	Service Action
----	----------------