



HYUNDAI

Technical Service Bulletin

GROUP

ENGINE

NUMBER

12-EM-001-1

DATE

NOVEMBER 2012

MODEL

ELANTRA
(MD/UD)

SUBJECT

CENTER MUFFLER RATTLE SERVICE PROCEDURE

This TSB supersedes TSB 12-EM-001 to revise the Description.

Description: Some Elantra vehicles may exhibit a slight rattle noise condition from the center muffler heat shield underneath the vehicle.

Correction: Follow the service procedure outlined in this bulletin to install a Clamp Set to address this condition.

*** NOTE**

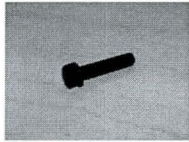
Refer to TSB 12-EC-001 if the rattle noise occurs when stopped or backing up when the engine is cold.

Applicable Vehicles:

Model: 2011-2012 MY Elantra MD/UD vehicles

Affected vehicle production range: Produced through February 14, 2012

Parts Information:

Part Name	Part Number	QTY	DESCRIPTION		
CLAMP SET	28667-3X000FFF	1	Clamp		Set Includes (2) Clamps
			Bolt		Set Includes (2) 35 mm Bolts

Warranty Information:

Model	Op Code	Operation	Op Time	Causal Part #	Nature Code	Cause Code
Elantra	28600F00	Center Muffler Rattle Noise Repair	0.3 M/H	28600-3X300	N29	C07

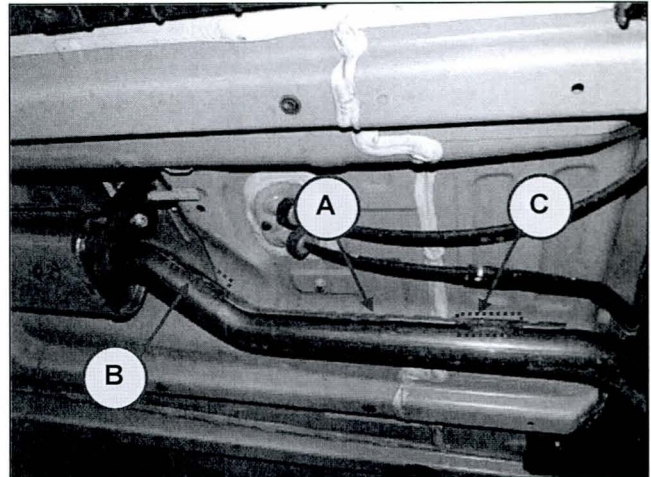
Circulate To: General Manager, Service Manager, Parts Manager, Warranty Manager, Service Advisors, Technicians, Body Shop Manager, Fleet Repair

Service Procedure:

1. Lift the vehicle to access the center muffler heat shield cover (A).

Locate the heat shield weld points as indicated in the photo on the right:

- (B) Forward Location
- (C) Rear Location



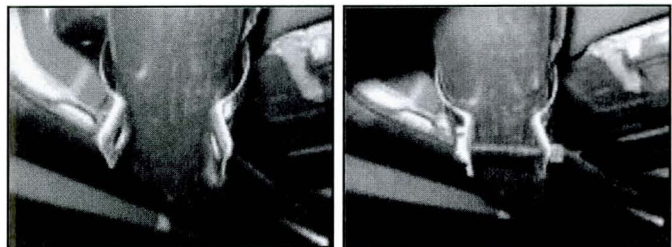
2. Apply clamp to heat shield area at the Forward Location.

Position the welded nut of the forward clamp towards the passenger side (RH) of vehicle.

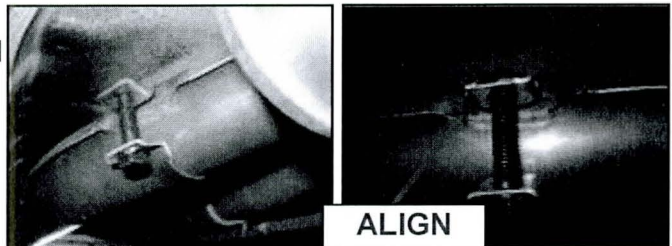


3. Bend clamp around heat shield and exhaust pipe.

Insert bolt into clamp to hand thread into the welded nut end.



4. Rotate the clamp around side of exhaust pipe (passenger side of car) and align top of welded nut flange with bottom of heat shield.

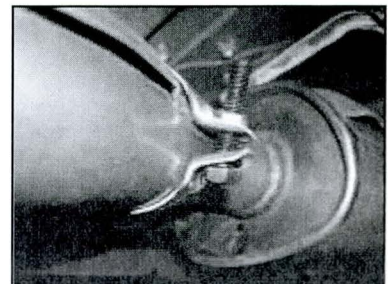


NOTICE

Alignment is important to prevent contact with body during operation.

5. Tighten the clamp fastener using a torque wrench set to 10 to 15 N-m (89 to 133 lb-in).

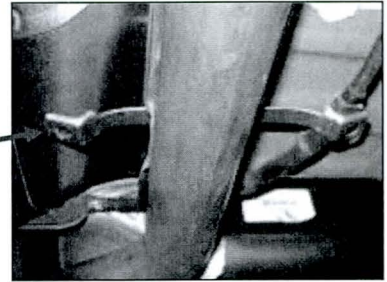
- ✓ Verify that the clamp is tight by attempting to rotate by hand.



SUBJECT:**CENTER MUFFLER RATTLE SERVICE PROCEDURE**

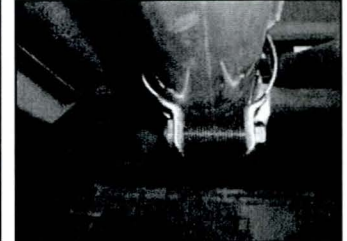
6. Apply clamp to heat shield area at the Rear Location.

Position the welded nut of the rear clamp towards the passenger side (RH) of vehicle.

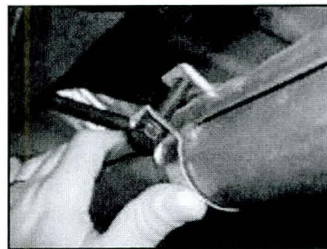


7. Bend clamp around heat shield and exhaust pipe.

Insert bolt into clamp to hand thread into the welded nut end.



8. Rotate the clamp around side of exhaust pipe (passenger side of car) and align the bottom flange of the clamp with bottom edge of the exhaust heat shield.

**NOTICE**

Alignment is important to prevent contact with body during operation.

9. Tighten the clamp fastener using a torque wrench set to 10 to 15 N-m (89 to 133 lb-in).
- ✓ Verify that the clamp is tight by attempting to rotate by hand.

