

NABI Service Bulletin: SB-12-03-01

To: Distribution –DART Operations Managers, Maintenance Managers and Maintenance Personnel

From: Kalman Takacs – Sr. Field Service Engineer

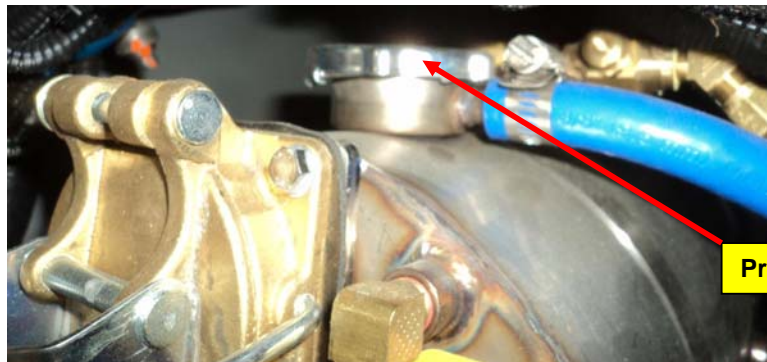
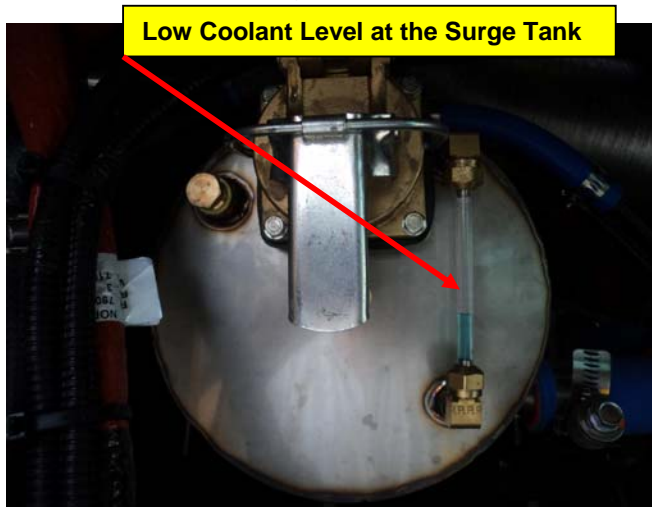
Subject: Coolant Level Maintenance

Date: December 4, 2012

The purpose of this Service Bulletin (SB) is to clarify the Coolant Level Maintenance procedure on the NABI 40-LFW and 31-LFW buses. Please Reference Section 9 of the NABI Maintenance Manual.

1. Check Coolant Level of the Surge Tank

- a. If coolant level is low and the engine/coolant is cold, fill the surge tank up by removing the pressure cap at the top of the Surge Tank. Check for leaks and repair as required. **Note:** If there was no coolant at all in the Surge Tank, then a fill and de-aeration procedure must be performed as it is described in NABI Work Instruction **L3/FSV-044**. When the Surge Tank level is checked and corrected, proceed to Step 2.
- b. If engine is hot and coolant level is low at the Surge Tank, **do not open the Surge Tank!** Add coolant to the Recovery Tank per Step 2. Recheck the coolant level of Surge Tank when engine cools down and add coolant if required per Step 1a.



2. Check Coolant Level of the Recovery Tank.

- a. If engine is cold then the level should be at cold mark. Add coolant to the cold full level if required.



- b. If engine temperature is at service temperature (around 190 deg F), then the coolant level should be at the hot full mark. Add coolant to the hot level if required.

For questions regarding this Service Bulletin or any other service inquiry, please contact:

Kalman Takacs – Sr. Field Service Engineer
kalman.takacs@nabiusa.com
256-453-7583 (mobile)