

**SB-10048439-6161**

## Technical Information Bulletin

---

**E063**

### Section

Miscellaneous

### Subject

PACCAR MX Air Compressor-Fuel Line Clip Campaign

### Release Date

11/16/2012

### Condition

Chassis listed were manufactured without an air compressor suction hose support clip and campaign E063 describes the repair to correct this shortage.

### Chassis Affected

14 T660s and T700s built between 09/29/12 – 10/15/12 equipped with PACCAR MX Engines. See the attached chassis list and Dealer-Customer-Chassis List.

### Action

Service all chassis affected that enter your dealership, even if the customer has no issue with the chassis. Use the procedure below. Review DWC or SIR online systems to verify that campaign "E063" is still open or already completed prior to performing this repair.

**NOTE:** A number of MX update bulletins have been published and a chassis subject to this service bulletin may be subject to others. Review campaign codes in DWC, SIR, and/or PACCAR MX campaign summary bulletin E000 to ensure all applicable campaign repairs are completed while the chassis is at your dealership

for service.

---

## **Warranty**

There are no time or mileage limits to this campaign. Kenworth will pay for parts at dealer net plus applicable mark-up and 0.3 hours labor. Use Quick Claim E063.

### **CLAIM CODING:**

Failure Location: 044-001-021	Work Accomplished: 05
Failure Type: 700	Responsibility Code: 02
SRT Code: 044-XXX	Claim Type: N

---

## **Parts**

Parts are available from PACCAR Parts.

**Special consideration:** There are limited quantities of the listed part available and dealers are asked to order only sufficient inventory for repairs they will perform. This is a non-critical part and dealers are encouraged to order parts as repairs are scheduled; likely as a part of combined MX repairs, reference E000, E061 and others.

<u>Quantity</u>	<u>Part Number</u>	<u>Description</u>
1	1925914PE	Piping Support Clip #1
1	1925915PE	Piping Support Clip #2

---

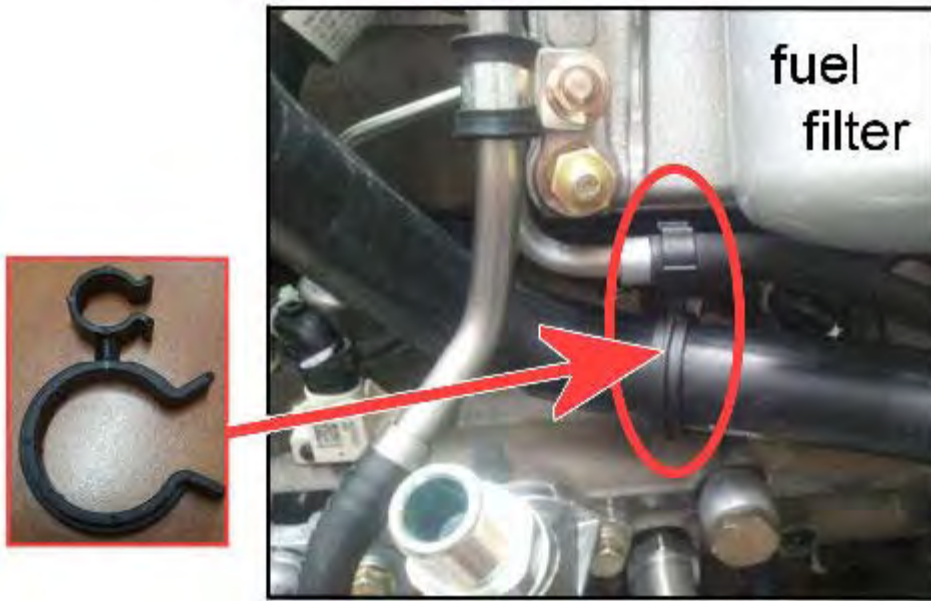
## **Background**

An updated hose routing resulted in a longer distance between compressor suction hose suspension points and the additional clip is intended to prevent rubbing and possible long term flex and wear of that hose. Current production engines include the additional clip but chassis listed were manufactured prior to implementation of this clip.

---

## **Procedure**


Join the two support clip pieces together and install as depicted, at the rubber-to-metal fuel line joint and near the turn of the flexible compressor suction hose.



---

## Attachments

 [E063 Bulletin Chassis List.xls](#)

Chassis listed with campaign E063 are also a part of campaign E061. The attached letter for campaign E061 serves as customer notice for campaign E063 as well.  [E061 Customer Letter.pdf](#)

---

Access to PACCAR's Enterprise Portal is provided as a benefit of doing business with PACCAR. All applications and content accessed through this system are confidential and proprietary and the property of PACCAR Inc and its suppliers, and must be kept strictly confidential pursuant to the contract licensing such access. Disclosure, publication, release or distribution of any material found on PACCAR systems to any person other than employees with a need to know such information is strictly prohibited. All activity on this system is monitored. If PACCAR suspects or discovers any unauthorized activity, access may be immediately terminated without prior notification. Violators may be subject to legal action.

© Copyright 2012 PACCAR Inc. All rights reserved. We welcome your [feedback](#) on this page. For technical questions or concerns about this page, please contact the [DealerNet Webmaster](#).